



University of  
Northern Iowa

# FACT BOOK 2021-2022

## Institutional Effectiveness & Planning

Within a challenging and supportive environment, the University of Northern Iowa engages students in high-quality and high-impact learning experiences and emphasizes excellence in teaching and scholarship.

## Quick Reference

<b>University President</b>	Mark A. Nook	<b>Residence Hall Occupancy</b>	3,026
<b>Board of Regents President</b>	Michael Richards	<b>Number of Financial Aid Awards</b>	37,915
<b>University Accreditation</b>	Higher Learning Commission (HLC)	<b>Fall 2021 Employees</b>	
		Faculty and Institutional Officers	547
		Professional and Scientific	590
<b>Number of Colleges</b>	4	General Service Staff	447
		Total	1,584
<b>Number of Academic Departments</b>	34	<b>2021 Current Funds Revenues</b>	\$403,057,147
<b>Enrollment 2021 (Fall Headcount)</b>		<b>2021 - 2022 Sponsored Funding Awarded</b>	\$72,363,066
Undergraduate	7,981	<b>Academic Year 2021 - 2022 Tuition and Fees</b>	
Graduate	1,250	Undergraduate Resident	\$7,780
Total	9,231	Graduate Resident	\$9,296
<b>Enrollment 2021 (Fall FTE)</b>		Undergraduate Nonresident	\$18,480
Undergraduate	7,346	Graduate Nonresident	\$19,928
Graduate	904	<b>Academic Year 2021 - 2022 Room and Board</b>	\$9,160
Total	8,250	<b>Electronic Journals Available in Library</b>	77,666
<b>2020 - 2021 Degrees Awarded</b>			
Baccalaureate (Bachelor's)	2,227	Location	Cedar Falls, IA
Master's	429	Homepage Address	<a href="https://www.uni.edu">https://www.uni.edu</a>
Specialist	8	Office of Enrollment Services Phone Number	800-772-2037
Doctorate	11		
Total	2,675		
<b>Total Living Alumni</b>	123,097		
<b>Student Financial Aid</b>	\$95,242,114	For an electronic version of the fact book, visit our web site at:	<a href="https://ie.uni.edu/uni-facts">https://ie.uni.edu/uni-facts</a>



# FACT BOOK 2021-2022

University of Northern Iowa  
Institutional Effectiveness & Planning  
Cedar Falls, IA 50614-0005  
[oire@uni.edu](mailto:oire@uni.edu)

Student Contributor: Shefei Schultz

Graphic and Publication Support: Office of University Relations

# TABLE OF CONTENTS

Quick Reference . . . . .	Inside front cover
Mission Statement . . . . .	1
UNI Organizational Chart . . . . .	2
UNI Administration . . . . .	3
Definitions of Terms Used . . . . .	4
Calendar . . . . .	6

## New Students

Fall New Students . . . . .	9
New Student Applications, Admissions and Enrolled . . . . .	10
New Students Enrolled by Residence . . . . .	11
New Freshmen Enrollment by Residence . . . . .	12
New Undergraduate Transfer Students by Type of Transfer College . . . . .	13
New Freshmen ACT Composite Scores and High School Class Rank . . . . .	14

## Enrollment

Fall Students Profile by College . . . . .	17
Headcount Enrollment . . . . .	18
Headcount Enrollment by Level . . . . .	19
Undergraduate Enrollment by Age . . . . .	20
Undergraduate Headcount by College . . . . .	21
Undergraduate Transfer Headcount by College . . . . .	22
Fall Enrollment by Residence . . . . .	23
Enrollment by Residence . . . . .	24
Fall Enrollment by Race/Ethnicity . . . . .	25
Enrollment by Student Race/Ethnicity . . . . .	26
Fall On-Campus Headcount and FTE Enrollment by Level . . . . .	27
First Major Only by College and Level Fall . . . . .	28
Annual Degrees Awarded by Level . . . . .	29
Degrees Granted by College . . . . .	30
Degrees Granted by Race/Ethnicity . . . . .	31
Undergraduate Retention and Graduation Rates . . . . .	32
Continuing Education Credit Enrollment Trends . . . . .	33
Continuing Education Courses Offered . . . . .	34
Web-Based Learning Management System (LMS) . . . . .	35
Fall Semester Residence Hall Occupancy by Gender and Level . . . . .	36

## Alumni

Total Living Alumni by College . . . . .	39
Total Living Alumni by College . . . . .	40
Alumni by State . . . . .	41
Alumni by Iowa County . . . . .	42
Post-Graduation Status of Bachelors Degree Recipients . . . . .	43
Post-Graduation Status of Graduate Degree Recipients . . . . .	44
Undergraduate Plans for Further Education . . . . .	45
Graduate Plans for Further Education . . . . .	46

## Faculty and Staff

Fall Faculty Profile by College . . . . .	49
Fall Faculty by College, Legal Sex, and Tenure Status . . . . .	50
UNI Workforce by Employment Categories . . . . .	52
UNI Workforce Headcount and FTE by Employment Categories . . . . .	53
UNI Workforce by Race/Ethnicity . . . . .	54
UNI Workforce by Employment Categories and Race/Ethnicity . . . . .	55
UNI Workforce Headcount/FTE by Employment Categories and College . . . . .	56
UNI Workforce by Employment Categories, Legal Sex, and College . . . . .	57
UNI Workforce by Employment Categories, Level and College . . . . .	58
UNI Workforce by Employment Categories, Level and Legal Sex . . . . .	59
UNI Temporary Workforce Headcount/FTE by Employment Categories . . . . .	60

## Budget and Finance

Statement of Revenues, Expenses and Changes In Net Assets . . . . .	63
Financial Aid Programs by Source of Aid . . . . .	65
Student Financial Aid Programs . . . . .	66
Full-Time Undergraduate Student Tuition and Fees . . . . .	67
Full-Time Graduate Student Tuition and Fees . . . . .	68
Sponsored Project Proposals and Awards . . . . .	69

## General Information

Library Statistics . . . . .	73
International Students by Country . . . . .	75
International Students by College . . . . .	76
Top 5 Countries of Origin for International Students . . . . .	77
Study Abroad Students by College and Classification . . . . .	78
Study Abroad Students by Term . . . . .	79
Incoming International Exchange Students by Country . . . . .	80
Top 5 Countries for UNI Study Abroad Students . . . . .	81
UNI Services to Businesses, Communities and Local Government . . . . .	82
UNI Carnegie Classification . . . . .	83
Iowa Economic Impact Profile . . . . .	84

## Peer Institutions

Undergraduate Enrollment and Costs . . . . .	87
Faculty by Rank . . . . .	88
Faculty Average Salaries by Rank . . . . .	89
Undergraduates Receiving Student Financial Aid . . . . .	90
Retention and Graduation Rates . . . . .	91
Degrees Granted in Academic Year . . . . .	92
Campus Map . . . . .	Inside back cover

## Mission Statement

### INSTITUTIONAL MISSION

Within a challenging and supportive environment, the University of Northern Iowa engages students in high-quality and high-impact learning experiences and emphasizes excellence in teaching and scholarship.

### VISION STATEMENT

Offering personalized attention to students, the University of Northern Iowa will be a diverse and inclusive campus community that provides an engaged education empowering students to lead locally and globally.

### VALUES

As a university community we are guided by the following core values:

**Academic Freedom** – the freedom of inquiry and expression in teaching and scholarship

**Access** – an inclusive educational environment that is accessible and affordable

### VALUES (continued)

**Accountability** – a commitment to integrity, responsibility and the highest ethical standards integrated into all University practices

**Collaboration** – a commitment to work together to achieve our shared vision, mission, and goals

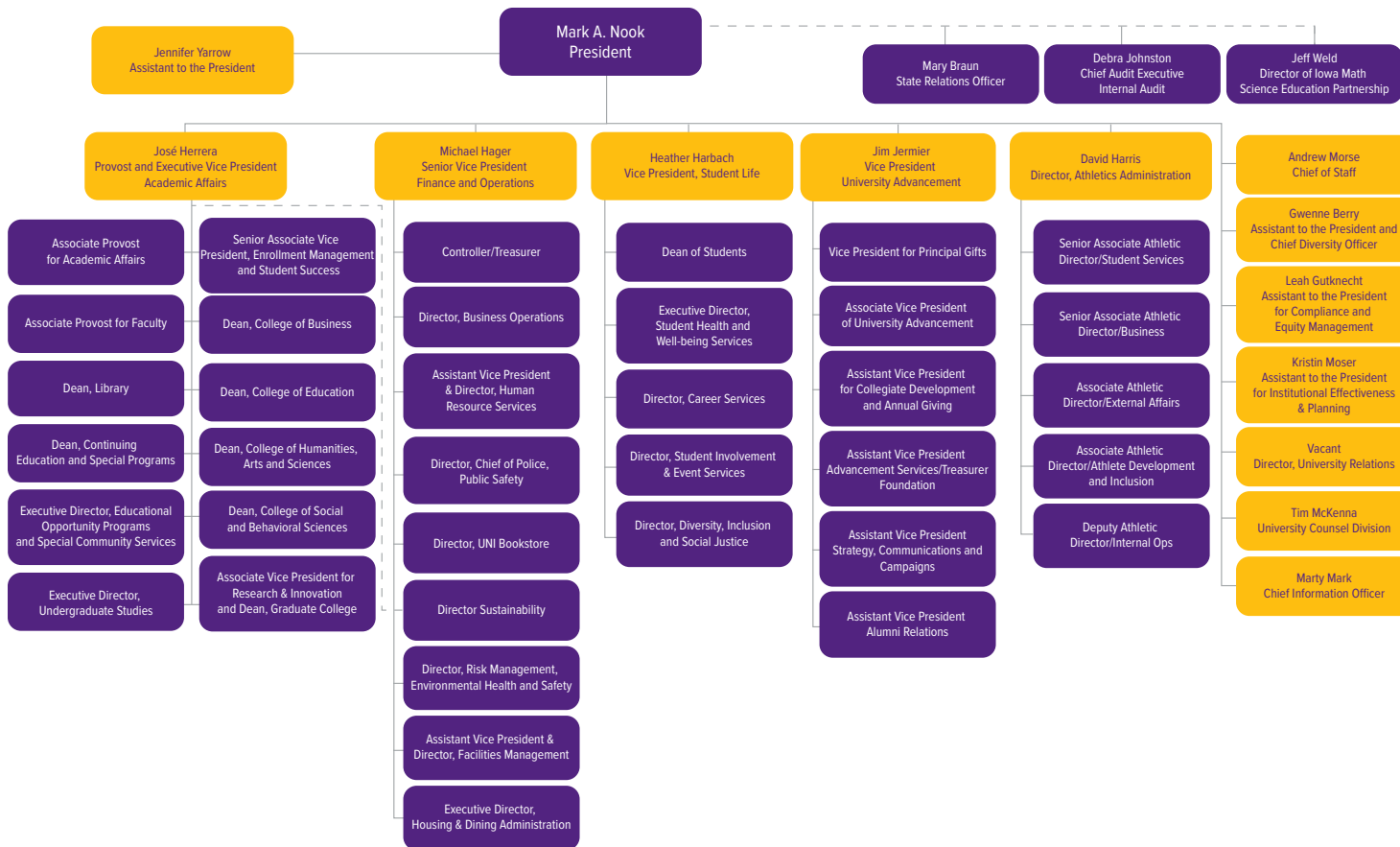
**Community** – a caring and safe community, characterized by civility and respect, which stands in solidarity against any actions that exclude, discriminate against, or silence members of our community

**Diversity** – the cultivation of a diverse and inclusive leaning and work environment

**Engagement** – active participation in transformative, innovative, and lifelong learning in a global society

**Excellence** – a commitment to the pursuit of excellence in individual and collective endeavors

**Sustainability** – a vibrant community and campus that is economically sound, environmentally responsible, and socially just



## UNI Administration

<b>PRESIDENT</b> .....	Mark A. Nook
<b>EXECUTIVE VICE PRESIDENT and PROVOST</b> .....	Jose Herrera
<b>SENIOR VICE PRESIDENT for FINANCE and OPERATIONS</b> .....	Michael Hager
<b>VICE PRESIDENTS</b>	
Interim Vice President for Student Affairs.....	David Grady
Vice President for University Advancement and President of the UNI Foundation.....	Jim Jermier
<b>ASSISTANT TO PRESIDENT, BOARD and GOVERNMENTAL RELATIONS</b> .....	Andrew Morse
<b>ASSISTANT TO PRESIDENT and CHIEF DIVERSITY OFFICER</b> .....	Gwenne Berry
<b>ASSISTANT TO PRESIDENT, COMPLIANCE and EQUITY MANAGEMENT</b> .....	Leah Gutknecht
<b>ASSISTANT TO PRESIDENT, INSTITUTIONAL EFFECTIVENESS &amp; PLANNING</b> .....	Kristin Moser
<b>DIRECTOR OF ATHLETIC ADMINISTRATION</b> .....	David Harris
<b>DIRECTOR OF UNIVERSITY RELATIONS</b> .....	Cassie Mathes
<b>SENIOR ASSOCIATE VICE PRESIDENT for ENROLLMENT MANAGEMENT</b> .....	Kristin Woods
<b>ASSOCIATE VICE PRESIDENT for RESEARCH &amp; INNOVATION</b> .....	Jennifer Waldron
<b>ASSOCIATE PROVOSTS</b>	
Associate Provost for Academic Affairs.....	Patrick Pease
Associate Provost for Faculty Affairs.....	John Vallentine
<b>DEANS</b>	
College of Business.....	Leslie Wilson
College of Education.....	Colleen Mulholland
College of Humanities, Arts and Sciences.....	John Fritch
College of Social and Behavioral Sciences.....	Brenda Bass
Continuing Education and Special Programs (interim).....	Jennifer Waldron
Graduate College .....	Jennifer Waldron
Library.....	Theresa Westbrook

## Definitions of Terms Used

### ENROLLMENTS

**Headcount:** The count of each student enrolled for one or more courses taken in a semester following the second week of the semester's start.

**Full-Time Student:** An undergraduate student enrolled for 12 or more credit hours per semester and a graduate student enrolled for 9 or more credit hours per semester.

**FTE (Full-Time Equivalent):** An enrollment unit used to represent a student enrolled for a full course of study. It is calculated by dividing total credit hours generated by 15.0 for undergraduate students and by 9 for graduate students for a semester FTE.

**Unclassified/Undeclared Student:** A student who has enrolled in instructional courses but has not been officially accepted into one of the institution's authorized degree programs.

**Freshman:** A first-year undergraduate student.

**First-Time First-Year Student:** A student attending any institution for the first-time at the undergraduate level. Includes students enrolled in the Fall term who attended college for the first time in the prior Summer term. Also includes students who entered with advanced standing (college credits earned before graduation from high school).

**First-Time Student:** A student attending any institution for the first time at the level enrolled. Includes students enrolled in the Fall term who attended a postsecondary institution for the first time at the same level in the prior Summer term. Also includes students who entered with advanced standing (college credit earned before graduation from high school).

**Graduation Rate:** Rate required for disclosure and/or reporting purposes under Student Right-to-Know. Calculated as the total number of completers within 150 percent of normal time divided by the revised cohort minus any allowable exclusions.

### FACULTY AND STAFF

**Faculty (Instruction/Research/Public Service):** Persons whose specific assignments customarily are made for the purpose of conducting instruction, research, or public service as a principle activity (or activities), and who hold academic rank titles of professor, associate professor, assistant professor, instructor, lecturer or the equivalent of any of these academic ranks. This category excludes president, vice presidents, and deans. Also excluded are faculty on leave without pay.

**Executive, Administrative and Managerial:** Persons whose assignments require primary (and major) responsibility for management of the institution, or a customarily recognized department or subdivision, thereof. Assignments require the performance of work directly related to management policies or general business operations of the institution, department or subdivision. It is assumed that assignments in this category customarily and regularly require the incumbent to exercise discretion and independent judgment and to direct the work of others. Included in this category are all officers holding titles such as president, vice president, dean, director or the equivalent, as well as officers subordinated to any of these administrators with such titles as associate dean, assistant dean, executive officer of academic departments (department heads or the equivalent) if their principal activity is administrative.

Continued on next page

## Definitions of Terms Used

**Continued:**

### **BUDGET AND FINANCE**

**Current Funds Expenditures (and Transfers):** The costs incurred for goods and services used in the conduct of the institution's operations. Includes the acquisition cost of capital assets, such as equipment and library books, to the extent current funds are budgeted for and used by operating departments for such purposes.

**Current Funds Revenues:** Unrestricted gifts, grants and other resources earned during the reporting period and restricted resources to the extent that such funds were expended for current operating purposes. Excludes restricted current funds received, but not expended, because these revenues have not been earned.

### **Academic Support (Expenditures) for Public Institutions:**

Expenditures for the support services that are an integral part of the public institution's primary mission of instruction, research or public service. Includes expenditures for libraries, museums, galleries, audiovisual services, academic computing support, ancillary support, academic administration, personnel development and course and curriculum development. Academic support expenditures for public institutions are measured differently than academic support expenses for private institutions because private institutions' academic support expenses include depreciation costs and interest costs in amounts associated with this function. In addition, private institutions exclude amounts of capital expenditures associated with the academic support function. Finally, operations and maintenance expenses associated with the academic support function are included in the amounts reported by private institutions but are reported separately by public institutions.

### **Auxiliary Enterprises (Expenditures) for Public Institutions:**

Expenditures for essentially self-supporting operations of the institution that exist to furnish a service to students, faculty or staff, and that charge a fee that is directly related to, although not necessarily equal to, the cost of the service. Includes mandatory and nonmandatory transfers. Examples are residence halls, food services, student health services, athletics, UNI-Dome and performing arts center. Auxiliary enterprise expenditures are measured differently for public and private institutions. Public institutions include capital expenditure amounts associated with auxiliary enterprise expenditures, but do not include depreciation, interest and operations and maintenance expenses. These amounts are included in private institutions' expenses of auxiliary enterprises.

### **OTHER**

**IPEDS:** The Integrated Postsecondary Education Data System conducted by National Center for Education Statistics (NCES). IPEDS began in 1986 and involves annual data collections. Survey data are required from all postsecondary institutions that have a Program Participation Agreement (PPA) with the Office of Postsecondary Education, U.S. Department of Education. IPEDS also requests limited data from approximately 3,000 other schools offering postsecondary education programs.

**HLC:** The Higher Learning Commission (HLC) is an independent corporation that was founded in 1895 as one of six regional institutional accreditations in the United States.

## CALENDAR

Semester/Date	Event	Semester/Date
<b>Fall 2021</b>		<b>Fall 2022</b>
Monday, August 23	Semester begins	Monday, August 22
Monday, September 6	University holiday	Monday, September 5
Friday, October 15	First half ends	Friday, October 14
Monday, October 18	Second half begins	Monday, October 17
Monday - Friday, November 22 - 26	Thanksgiving break	Monday - Friday, November 21 - 25
Thursday - Friday, November 25 - 26	University holiday	Thursday - Friday, November 24 - 25
Thursday - Wednesday, December 9 - 15	Final exam week	Monday - Friday, December 12 - 16
Saturday, December 18	Commencement	Saturday, December 17
Thursday-Monday, December 24 - 27	University holiday	Monday - Tuesday, December 26 - 27
<b>Spring 2022</b>		<b>Spring 2023</b>
Friday, December 31	University holiday	Monday, January 2
Monday, January 17	University holiday	Monday, January 16
Thursday, January 20	Semester begins	Tuesday, January 17
Friday, March 11	First half ends	Friday, March 10
Monday, March 21	Second half begins	Monday, March 20
Monday - Friday, March 14 - 18	Spring break	Monday - Friday, March 13 - 17
Monday - Friday, May 9 - 13	Final exam week	Monday - Friday, May 8 - 12
Saturday, May 14	Commencement	Saturday, May 13
<b>Summer 2022</b>		<b>Summer 2023</b>
Monday, May 16	First 4 week session begins	Monday, May 15
Monday, May 16	First 6 week session begins	Monday, May 15
Monday, May 30	University holiday	Monday, May 29
Friday, June 10	First 4 week session ends	Friday, June 9
Monday, June 13	Second 4 week session begins	Monday, June 12
Monday, June 13	8 week session begins	Monday, June 12
Friday, June 24	First 6 week session ends	Friday, June 23
Monday, June 27	Second 6 week session begins	Monday, June 26
Monday, July 4	University holiday	Tuesday, July 4
Friday, July 8	Second 4 week session ends	Friday, July 7
Monday, July 11	Third 4 week session begins	Monday, July 10
Friday, Aug 5	All sessions end	Friday, August 4

\* Calendar adjusted due to COVID-19



NEW STUDENTS





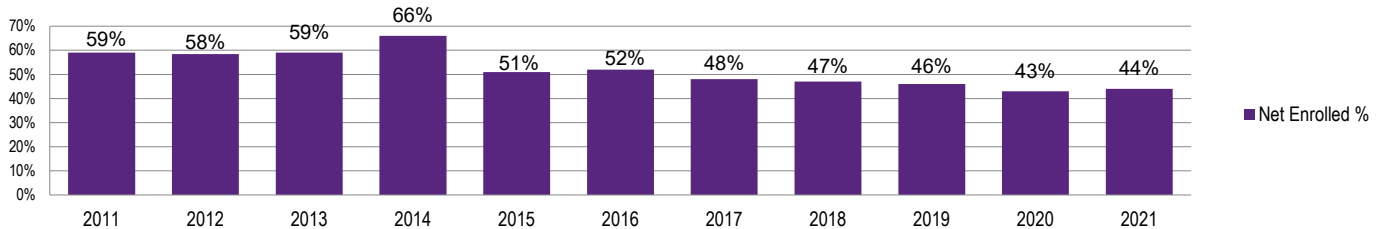
NEW STUDENTS



## Fall 2021 New Students

	Applications		Admissions		Net Enrolled*		NET ENROLLED					
	N	%	N	%	N	%	Resident N	%	Non-Resident N	%	International N	%
<b>TOTAL</b>	<b>6,782</b>		<b>5,652</b>		<b>2,653</b>		<b>2,353</b>		<b>249</b>		<b>51</b>	
Percent				83.3		39.1		88.7		9.4		1.9
<b>Undergraduate</b>												
New Freshmen	4,744	80.2	4,083	82.1	1,554	71.4	1,404	71.0	142	81.1	8	33.3
Transfers	1,170	19.8	893	17.9	623	28.6	574	29.0	33	18.9	16	66.7
Total	<b>5,914</b>		<b>4,976</b>		<b>2,177</b>		<b>1,978</b>		<b>175</b>		<b>24</b>	
Percent				84.1		43.8		90.9		8.1		1.1
<b>Graduate</b>												
Students	<b>868</b>		<b>676</b>		<b>476</b>		<b>375</b>		<b>74</b>		<b>27</b>	
Percent				77.9		70.4		78.8		15.5		5.7

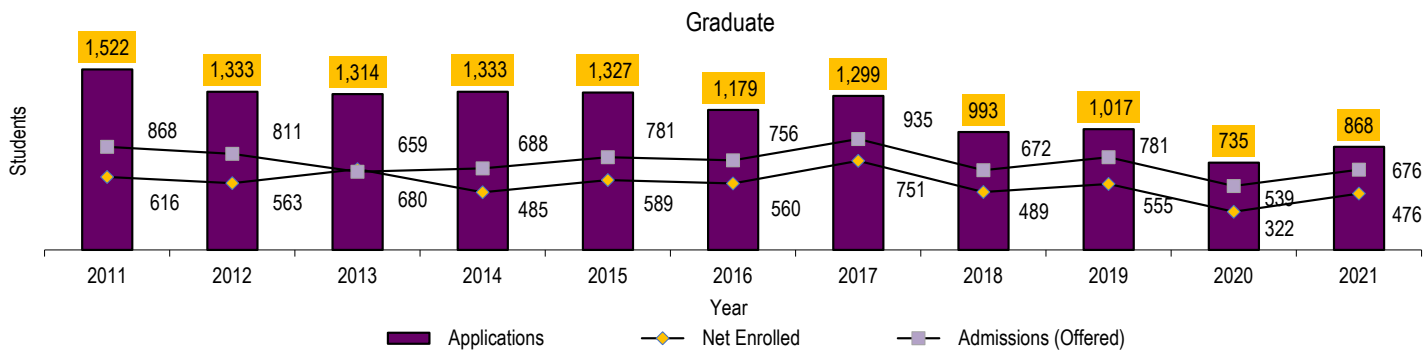
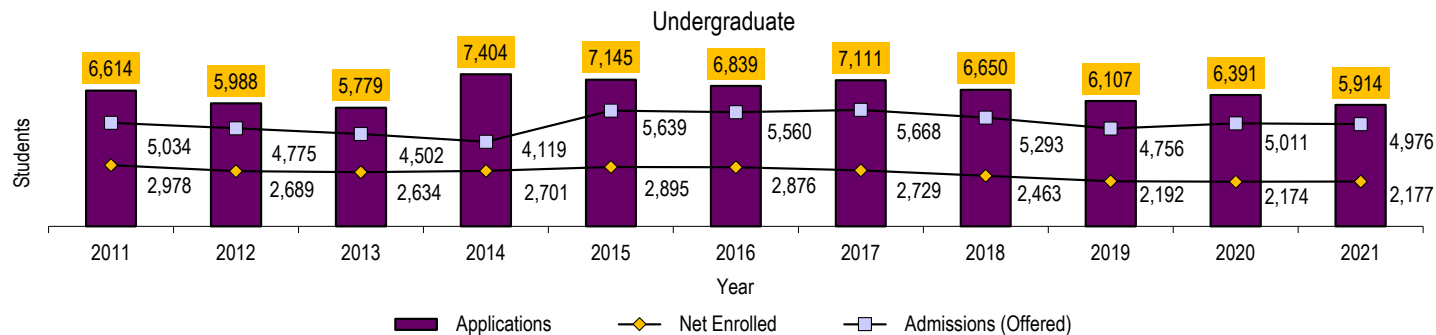
Undergraduate - Net Enrolled % of Admitted



The undergraduate data does not reflect unclassified new students.

\*Enrolled as % of applied

## New Student Applications, Admissions and Enrolled Fall Semester 2011 - 2021



## New Students Enrolled by Residence 2011 - 2021

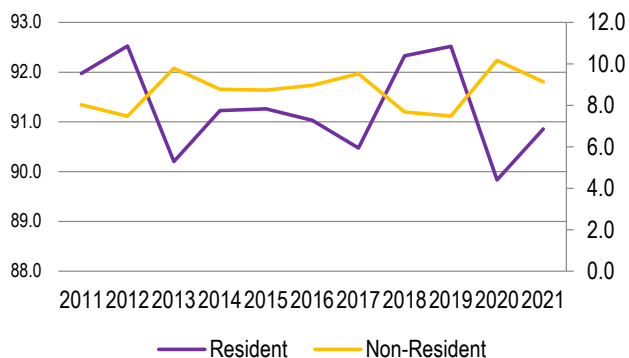
### UNDERGRADUATE\*

	Resident	Non-Resident	International Student
2011	2,739	177	62
2012	2,488	156	45
2013	2,376	182	76
2014	2,464	159	78
2015	2,642	181	72
2016	2,618	188	70
2017	2,469	199	61
2018	2,274	150	39
2019	2,028	130	34
2020	1,953	188	33
2021	1,978	175	24

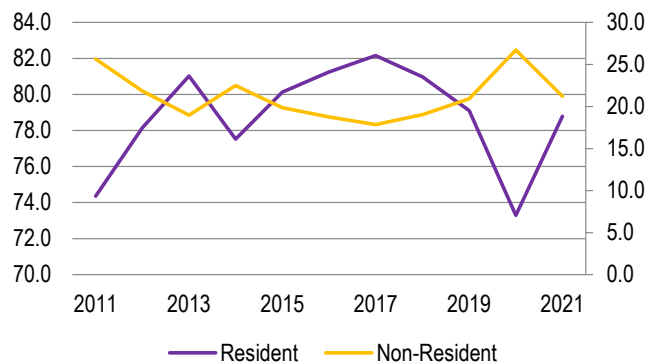
### GRADUATE

	Resident	Non-Resident	International Student	Total	Annual Percent Change
2011	458	121	37	3,594	1.8
2012	440	81	42	3,252	-9.5
2013	551	101	28	3,314	1.9
2014	376	81	28	3,186	-3.9
2015	472	81	36	3,484	9.4
2016	455	80	25	3,436	-1.4
2017	617	98	36	3,480	1.3
2018	396	63	30	2,952	-15.2
2019	439	86	30	2,747	-6.9
2020	236	59	27	2,496	-9.1
2021	375	74	27	2,653	6.3

Undergraduate New Student %



Graduate New Student %

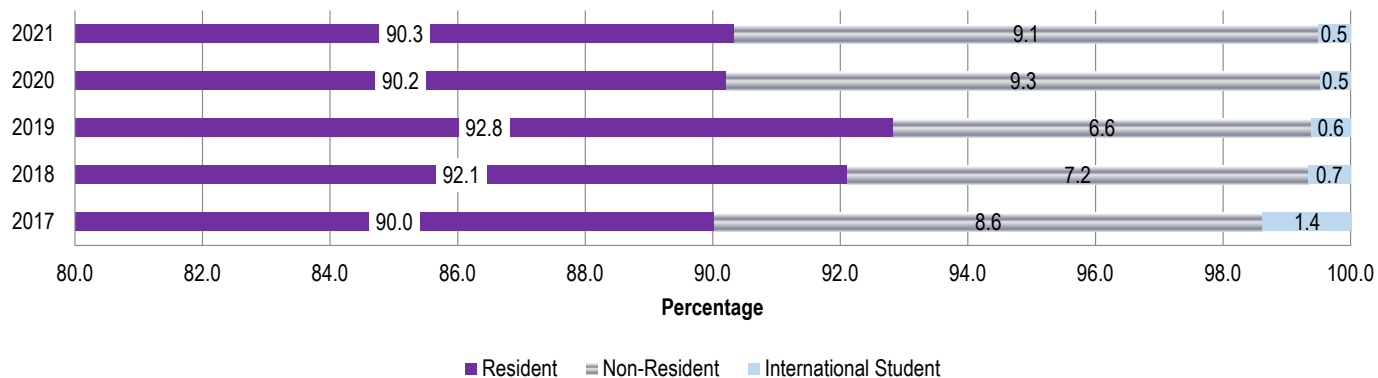


\*New undergraduate students are only new freshmen and new transfers.

## New Freshmen Enrollment by Residence 2017 - 2021

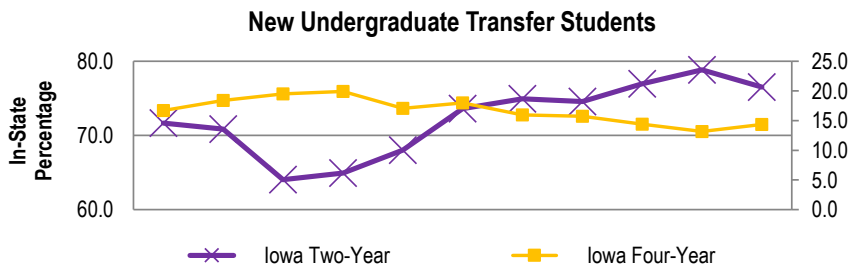
	2017		2018		2019		2020		2021	
	N	%	N	%	N	%	N	%	N	%
<b>New Freshmen</b>	<b>1,834</b>		<b>1,661</b>		<b>1,465</b>		<b>1,482</b>		<b>1,554</b>	
Annual Percent Change		-8.3		-9.4		-11.8		1.2		4.9
Resident	1,651	90.0	1,530	92.1	1,360	92.8	1,337	90.2	1,404	90.3
Non-Resident	158	8.6	120	7.2	96	6.6	138	9.3	142	9.1
International Student	25	1.4	11	0.7	9	0.6	7	0.5	8	0.5

New Freshmen Enrollment by Residence



## New Undergraduate Transfer Students by Transfer Type

	2011	2012	2013	2014	2015	2016	2017	2018	2019	2020	2021
<b>TOTAL</b>	<b>1,041</b>	<b>985</b>	<b>912</b>	<b>904</b>	<b>979</b>	<b>834</b>	<b>858</b>	<b>763</b>	<b>694</b>	<b>638</b>	<b>592</b>
Annual Percent Change	-8.5	-5.4	-7.4	-0.9	8.3	-14.8	2.9	-11.1	-9.0	-8.1	-7.2
Iowa Two-Year Public and Private	<b>746</b>	<b>698</b>	<b>584</b>	<b>587</b>	<b>666</b>	<b>614</b>	<b>643</b>	<b>569</b>	<b>534</b>	<b>503</b>	<b>453</b>
Iowa Area Community Colleges	746	698	584	587	665	614	643	569	534	503	453
Iowa Two-Year Private	0	0	0	0	1	0	0	0	0	0	0
Iowa Four-Year Public and Private	<b>174</b>	<b>181</b>	<b>178</b>	<b>180</b>	<b>167</b>	<b>150</b>	<b>137</b>	<b>120</b>	<b>100</b>	<b>84</b>	<b>85</b>
Iowa Four-Year Public											
Iowa State University	32	21	25	32	30	23	22	18	24	15	23
University of Iowa	51	35	30	32	22	14	28	24	20	13	17
University of Northern Iowa*		25	40	32	29	31	23	28	14	4	1
Subtotal	83	81	95	96	81	68	73	70	58	32	41
Iowa Four-Year Private	91	100	83	84	86	82	64	50	42	52	44
Non-Iowa (US) Total	<b>121</b>	<b>106</b>	<b>150</b>	<b>137</b>	<b>146</b>	<b>70</b>	<b>78</b>	<b>74</b>	<b>60</b>	<b>51</b>	<b>54</b>
Two-Year Out of State	38	26	38	34	47	22	32	30	25	18	20
Four-Year Out of State	83	80	112	103	99	48	46	44	35	33	34



\*Students transferring from UNI are returning UNI students pursuing a second BA or teacher license

## New Freshmen ACT Composite Scores and High School Class Rank

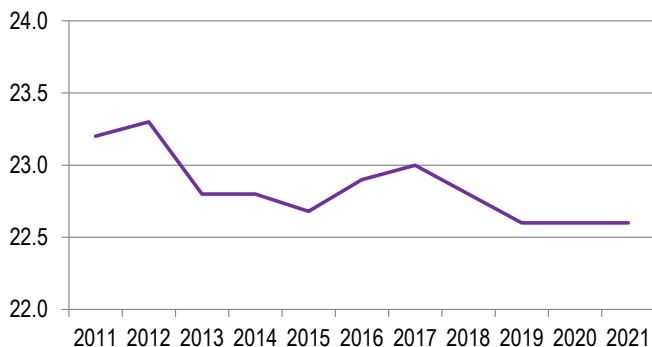
**ACT Composite Scores**

	Mean	75 <sup>th</sup> Percentile	25 <sup>th</sup> Percentile
2011	23.2	25.0	21.0
2012	23.3	25.0	21.0
2013	22.8	24.0	20.0
2014	22.8	25.0	20.0
2015	22.7	25.0	20.0
2016	22.9	25.0	20.0
2017	23.0	26.0	20.0
2018	22.8	25.0	20.0
2019	22.6	25.0	20.0
2020	22.6	25.0	19.0
2021	22.6	26.0	19.0

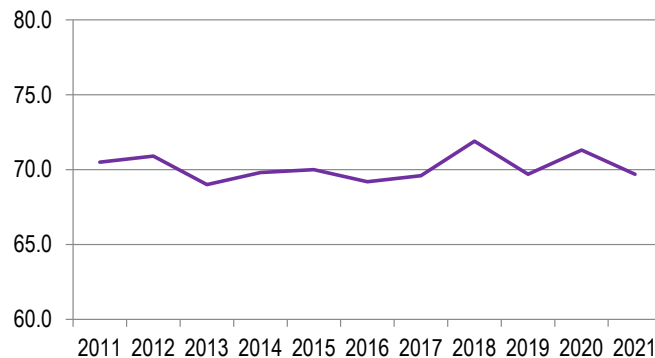
**High School Rank**

	Mean	Upper 10%	Upper 20%	Upper 50%
2011	70.5	19.1	37.2	84.1
2012	70.9	20.0	38.9	84.6
2013	69.0	18.1	37.1	81.6
2014	69.8	17.0	35.9	83.1
2015	70.0	18.0	39.3	83.7
2016	69.2	17.3	36.9	81.4
2017	69.6	16.9	37.0	82.4
2018	71.9	20.4	40.6	86.0
2019	69.7	20.4	36.1	83.8
2020	71.3	21.4	41.1	84.2
2021	69.7	19.6	40.2	80.9

**ACT Mean Composite Score**



**High School Mean Rank**





ENROLLMENT



ENROLLMENT

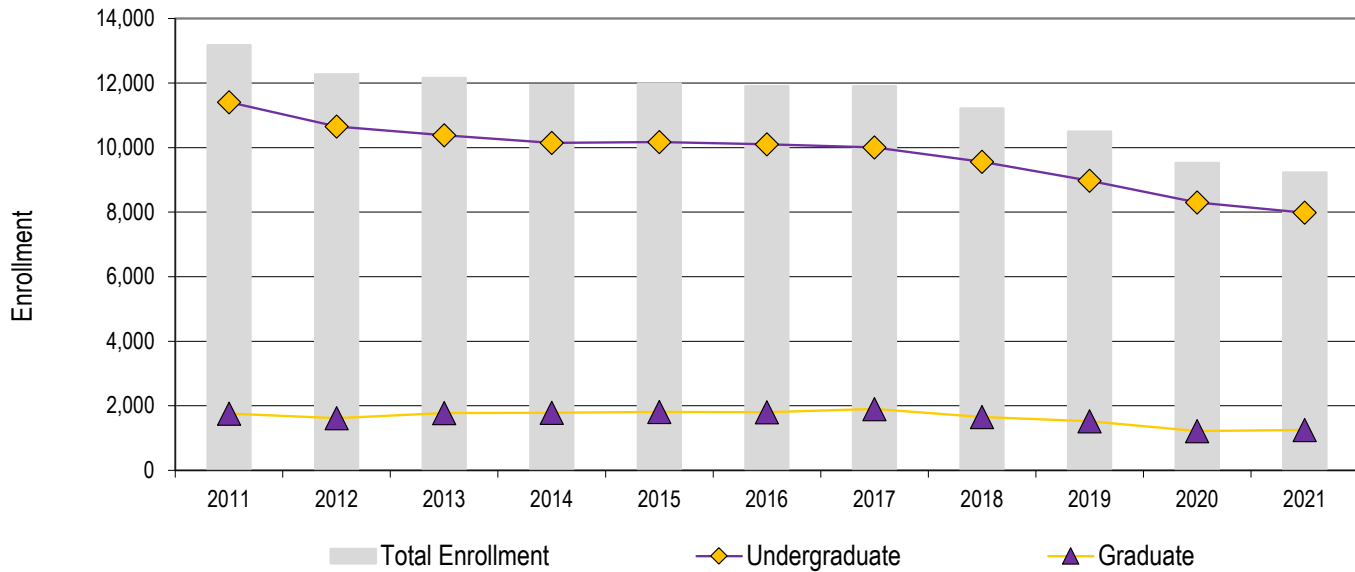
## Fall 2021 Students Profile by College

	Total University	Business	Education	Humanities, Arts & Sciences	Social & Behavioral Sciences	No Specific College
<b>TOTAL</b>	<b>9,231</b>	<b>1,665</b>	<b>2,200</b>	<b>2,761</b>	<b>1,689</b>	<b>916</b>
Percent	100	18	24	30	18	10
Full-Time	7,739	1,525	1,772	2,473	1,488	481
Part-Time	1,492	140	428	288	201	435
Female	5,799	643	1,700	1,591	1,227	638
Male	3,432	1,022	500	1,170	462	278
Freshman	1,554	298	265	468	281	242
Sophomore	1,490	281	314	512	284	99
Junior	1,907	415	396	588	419	89
Senior	2,773	563	771	878	465	96
Unclassified	257	17	33	27	9	171
Graduate	1,250	91	421	288	231	219
<b>International Students:</b>						
Undergraduate	132	39	5	42	9	37
Graduate	104	53	14	17	9	11
<b>1<sup>st</sup> Majors:</b>						
Undergraduate	7,981	1,574	1,779	2,473	1,458	697
Graduate	1,250	91	425	292	241	201
<b>2019-2020 Degrees Granted:</b>						
Baccalaureate (Bachelor's)	2,227	470	488	732	464	73
Master's	429	74	125	151	75	4
Specialists	11		11			
Doctorates	8		5	3		

## Headcount Enrollment 2011 - 2021

	UNDERGRADUATE			GRADUATE			Total	Annual Percent Change
	Full-Time	Part-Time	Total	Full-Time	Part-Time	Total		
<b>2011</b>	10,209	1,199	11,408	742	1,018	1,760	<b>13,168</b>	-0.2
<b>2012</b>	9,679	976	10,655	682	936	1,618	<b>12,273</b>	-6.8
<b>2013</b>	9,330	1,050	10,380	638	1,141	1,779	<b>12,159</b>	-0.9
<b>2014</b>	9,122	1,020	10,142	597	1,189	1,786	<b>11,928</b>	-1.9
<b>2015</b>	9,127	1,042	10,169	562	1,250	1,812	<b>11,981</b>	0.4
<b>2016</b>	9,146	958	10,104	557	1,244	1,801	<b>11,905</b>	-0.6
<b>2017</b>	9,100	905	10,005	538	1,364	1,902	<b>11,907</b>	0.0
<b>2018</b>	8,745	816	9,561	519	1,132	1,651	<b>11,212</b>	-5.8
<b>2019</b>	8,228	745	8,973	454	1,070	1,524	<b>10,497</b>	-6.4
<b>2020</b>	7,632	672	8,304	432	786	1,218	<b>9,522</b>	-9.3
<b>2021</b>	7,290	691	7,981	449	801	1,250	<b>9,231</b>	-3.1

## Headcount Enrollment by Level 2011 - 2021



Includes full-time and part-time students

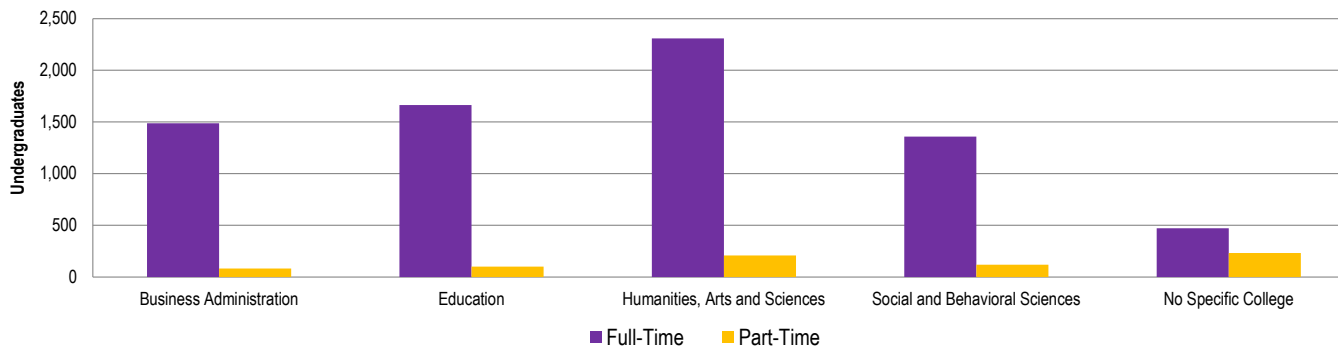
## Undergraduate Enrollment by Age 2011 - 2021

Fall Semester	2011	2012	2013	2014	2015	2016	2017	2018	2019	2020	2021
<b>Total Enrollment</b>	<b>11,408</b>	<b>10,655</b>	<b>10,380</b>	<b>10,142</b>	<b>10,169</b>	<b>10,104</b>	<b>10,005</b>	<b>9,561</b>	<b>8,973</b>	<b>8,304</b>	<b>7,981</b>
Under 18	49	21	64	46	29	30	40	25	20	21	23
18	1,165	1,001	992	1,068	1,119	1,154	1,050	945	820	827	909
19	1,879	1,779	1,682	1,677	1,779	1,913	1,833	1,694	1,545	1,439	1,410
20	2,072	2,008	1,908	1,833	1,828	1,888	1,995	1,947	1,770	1,685	1,495
21	2,227	2,158	2,098	2,023	1,955	1,862	2,009	1,990	1,965	1,780	1,676
22	1,729	1,611	1,598	1,554	1,456	1,443	1,311	1,371	1,361	1,299	1,155
23	855	776	771	741	706	651	654	581	583	519	538
24	309	352	309	300	326	249	284	254	204	168	184
25	200	158	178	170	198	188	126	146	139	100	96
26	152	118	117	115	104	133	118	89	88	75	63
27	118	89	87	85	111	71	83	78	51	59	46
28	82	86	60	70	58	78	60	46	46	31	50
29	61	62	55	58	54	39	51	39	40	31	24
30-39	325	293	307	272	284	261	258	232	203	171	192
40-49	134	101	96	85	101	81	83	85	89	68	74
50-64	48	41	57	43	53	57	46	35	43	30	39
65 and older	3	1	1	2	8	6	4	4	6	1	7

## Undergraduate Headcount by College Fall 2017 - 2021

	Full-Time					Part-Time				
	2017	2018	2019	2020	2021	2017	2018	2019	2020	2021
<b>Total University</b>	<b>9,100</b>	<b>8,745</b>	<b>8,228</b>	<b>7,632</b>	<b>7,290</b>	<b>905</b>	<b>816</b>	<b>745</b>	<b>672</b>	<b>691</b>
Business Administration	1,857	1,778	1,634	1,520	1,488	152	129	82	107	86
Education	2,119	2,001	1,917	1,738	1,665	105	124	102	83	114
Humanities, Arts and Sciences	3,042	2,870	2,736	2,523	2,308	294	223	209	184	165
Social and Behavioral Sciences	1,490	1,452	1,387	1,372	1,358	133	127	120	131	100
No Specific College	592	644	554	479	471	221	213	232	167	226

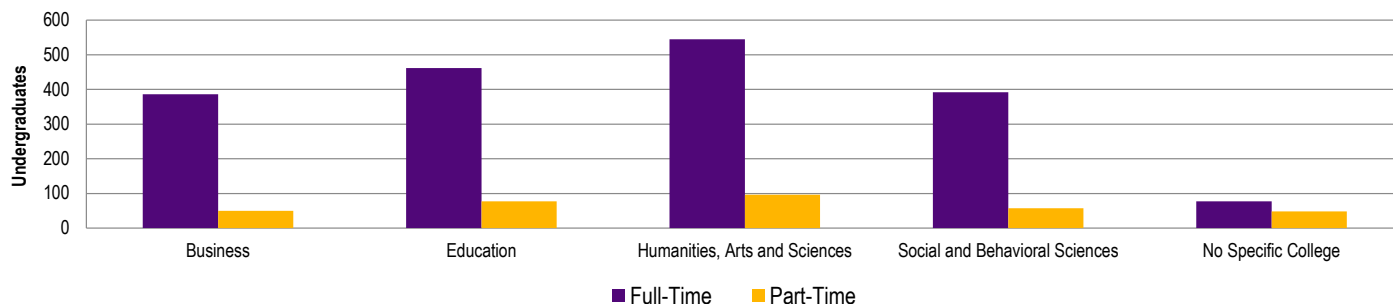
Fall 2021 Undergraduates by College



## Transfer Headcount by College Fall 2017- 2021

	Full-Time					Part-Time				
	2017	2018	2019	2020	2021	2017	2018	2019	2020	2021
<b>Undergraduate Transfer</b>	<b>2,584</b>	<b>2,401</b>	<b>2,232</b>	<b>2,059</b>	<b>1,862</b>	<b>440</b>	<b>421</b>	<b>336</b>	<b>323</b>	<b>299</b>
Business	536	524	463	417	386	85	78	45	55	50
Education	653	576	547	512	462	66	90	68	62	77
Humanities, Arts and Sciences	823	745	709	611	545	180	135	119	106	96
Social and Behavioral Sciences	486	474	429	442	392	74	80	70	56	57
No Specific College	86	82	84	77	77	35	38	34	44	48

Fall 2021 Undergraduate Transfers by College



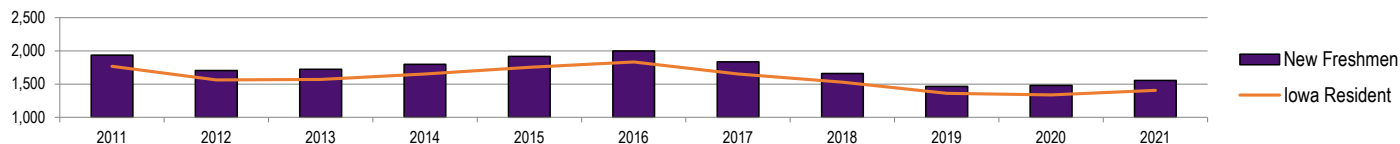
## Fall 2021 Enrollment by Residence

	U.S. Iowa Resident		U.S. Non-Iowa Resident		International Student		TOTAL
	N	%	N	%	N	%	N
<b>Enrollment</b>	<b>8,281</b>	89.7	<b>714</b>	7.7	<b>236</b>	2.6	<b>9,231</b>
New Freshmen	1,404	90.3	142	9.1	8	0.5	1,554
Undergraduate	7,318	91.7	531	6.7	132	1.7	7,981
New Graduate	375	78.8	74	15.5	27	5.7	476
Graduate	963	77.0	183	14.6	104	8.3	1,250

## Enrollment by Residence 2011 - 2021

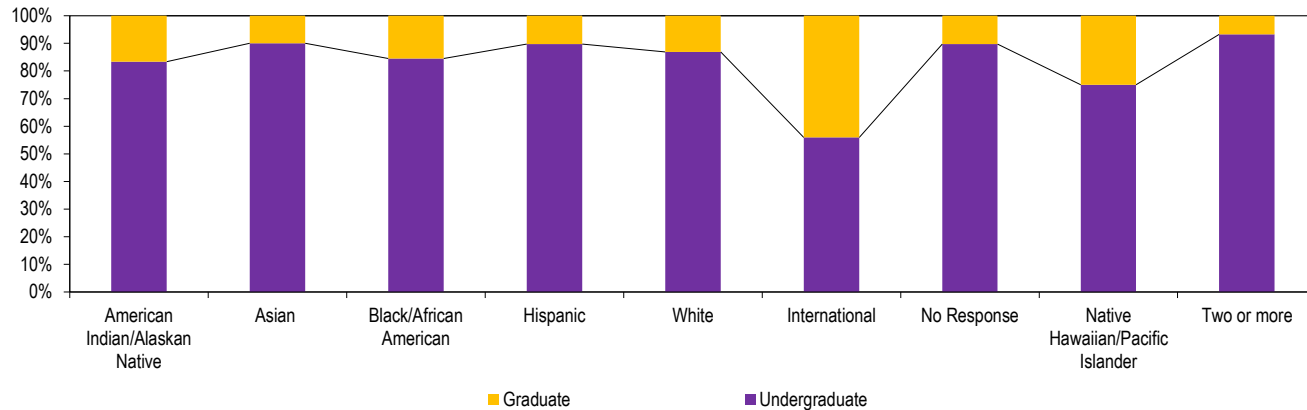
												5 Yr %	10 Yr %
Fall Semester	2011	2012	2013	2014	2015	2016	2017	2018	2019	2020	2021	Change	Change
<b>Enrollment</b>	<b>13,168</b>	<b>12,273</b>	<b>12,159</b>	<b>11,928</b>	<b>11,981</b>	<b>11,905</b>	<b>11,907</b>	<b>11,212</b>	<b>10,497</b>	<b>9,522</b>	<b>9,231</b>	-22.5	-29.9
Iowa Resident	11,915	11,095	10,842	10,491	10,549	10,528	10,545	9,976	9,394	8,455	8,281	-21.3	-30.5
U.S., Non-Iowa Resident	765	724	797	811	816	829	815	756	718	717	714	-13.9	-6.7
International Student	488	454	520	626	616	548	547	480	385	350	236	-56.9	-51.6
<b>New Freshmen</b>	<b>1,937</b>	<b>1,704</b>	<b>1,722</b>	<b>1,797</b>	<b>1,916</b>	<b>2,000</b>	<b>1,834</b>	<b>1,661</b>	<b>1,465</b>	<b>1,482</b>	<b>1,554</b>	-22.3	-19.8
Iowa Resident	1,769	1,563	1,568	1,651	1,751	1,833	1,651	1,530	1,360	1,337	1,404	-23.4	-20.6
U.S., Non-Iowa Resident	133	119	132	112	131	143	158	120	96	138	142	-0.7	6.8
International Student	35	22	22	34	34	24	25	11	9	7	8	-66.7	-77.1
<b>Undergraduate</b>	<b>11,408</b>	<b>10,655</b>	<b>10,380</b>	<b>10,142</b>	<b>10,169</b>	<b>10,104</b>	<b>10,005</b>	<b>9,561</b>	<b>8,973</b>	<b>8,304</b>	<b>7,981</b>	-21.0	-30.0
Iowa Resident	10,522	9,806	9,411	9,052	9,083	9,096	9,045	8,695	8,191	7,585	7,318	-19.5	-30.5
U.S., Non-Iowa Resident	541	530	578	603	605	604	587	569	532	529	531	-12.1	-1.8
International Student	345	319	391	487	481	404	373	297	250	190	132	-67.3	-61.7
<b>Graduate</b>	<b>1,760</b>	<b>1,618</b>	<b>1,779</b>	<b>1,786</b>	<b>1,812</b>	<b>1,801</b>	<b>1,902</b>	<b>1,651</b>	<b>1,524</b>	<b>1,218</b>	<b>1,250</b>	-30.6	-29.0
Iowa resident	1,393	1,289	1,431	1,439	1,466	1,432	1,500	1,281	1,203	870	963	-32.8	-30.9
U.S., Non-Iowa Resident	224	194	219	208	211	225	228	187	186	188	183	-18.7	-18.3
International Student	143	135	129	139	135	144	174	183	135	160	104	-27.8	-27.3

New Freshmen



## Fall 2021 Enrollment by Race/Ethnicity

	American Indian/ Alaskan Native		Asian		Black/ African American		Hispanic		White		International		No Response		Native Hawaiian/ Pacific Islander		Two or More	
	N	%	N	%	N	%	N	%	N	%	N	%	N	%	N	%	N	%
Enrollment	12	100	121	100	245	100	449	100	7,702	100	236	100	225	100	4	100	237	100
Undergraduate	10	83.3	109	90.1	207	84.5	403	89.8	6,694	86.9	132	55.9	202	89.8	3	75.0	221	93.2
Graduate	2	16.7	12	9.9	38	15.5	46	10.2	1,008	13.1	104	44.1	23	10.2	1	25.0	16	6.8
Percentage	0.13		1.31		2.65		4.86		83.44		2.56		2.44		0.04		2.57	



Undergraduate 7,981  
Graduate 1,250

## Enrollment by Student Race/Ethnicity 2011-2021

	UNDERGRADUATE							GRADUATE						
	American Indian/ Alaskan Native	Asian/ Pacific Islander*	Black/ African American	Hispanic/ Latino*	Native Hawaiian/ Pacific Islander	Two or More	Total	American Indian/ Alaskan Native	Asian/ Pacific Islander*	Black/ African American	Hispanic/ Latino*	Native Hawaiian/ Pacific Islander	Two or More	Total
<b>2011</b>	17	118	300	257	2	121	<b>815</b>	7	26	66	41	1	11	<b>152</b>
<b>2012</b>	21	107	300	280	4	143	<b>855</b>	3	21	67	33	0	10	<b>134</b>
<b>2013</b>	19	87	279	289	5	168	<b>847</b>	5	20	62	33	2	11	<b>133</b>
<b>2014</b>	20	90	285	339	7	195	<b>936</b>	5	18	54	38	0	15	<b>130</b>
<b>2015</b>	16	115	287	350	7	213	<b>988</b>	6	18	65	29	0	17	<b>135</b>
<b>2016</b>	28	128	273	388	9	192	<b>1,018</b>	5	13	57	39	0	23	<b>137</b>
<b>2017</b>	34	136	271	391	7	203	<b>1,042</b>	2	10	46	40	0	18	<b>116</b>
<b>2018</b>	35	136	265	371	7	207	<b>1,021</b>	1	10	45	40	0	13	<b>109</b>
<b>2019</b>	11	126	214	396	9	239	<b>995</b>	2	12	40	41	1	18	<b>114</b>
<b>2020</b>	10	123	212	403	6	228	<b>982</b>	1	13	39	39	0	24	<b>116</b>
<b>2021</b>	10	109	207	403	3	221	<b>953</b>	2	12	38	46	1	16	<b>115</b>

Includes all international students and excludes white domestic students; other categories include American citizens, immigrants, asylees, and refugees only.

## Fall On-Campus Headcount and Full-Time Equivalent (FTE) Enrollment by Level 2011 - 2021

	Headcount									FTE Enrollment								
	Undergraduate						Graduate			Undergraduate						Graduate		
	F	S	Jr	Sr	Un-Classified	Total	Master's	Advanced	Total	F	S	Jr	Sr	Un-Classified	Total	Master's	Advanced	Total
<b>2011</b>	2,388	2,173	2,823	3,872	152	<b>11,408</b>	1,236	524	<b>1,760</b>	2,060	2,031	2,562	3,342	60	<b>10,055</b>	1,046	292	<b>1,338</b>
<b>2012</b>	2,091	2,096	2,737	3,589	142	<b>10,655</b>	1,161	457	<b>1,618</b>	1,891	1,999	2,533	3,153	54	<b>9,630</b>	977	266	<b>1,243</b>
<b>2013</b>	2,037	1,902	2,662	3,569	210	<b>10,380</b>	1,283	496	<b>1,779</b>	1,874	1,810	2,485	3,114	60	<b>9,343</b>	991	282	<b>1,273</b>
<b>2014</b>	2,047	1,928	2,437	3,470	260	<b>10,142</b>	1,232	554	<b>1,786</b>	1,899	1,818	2,260	3,065	77	<b>9,119</b>	907	285	<b>1,192</b>
<b>2015</b>	2,174	1,933	2,492	3,335	235	<b>10,169</b>	1,237	575	<b>1,812</b>	2,010	1,814	2,312	2,937	78	<b>9,151</b>	914	280	<b>1,194</b>
<b>2016</b>	2,232	2,104	2,430	3,177	161	<b>10,104</b>	1,258	543	<b>1,801</b>	2,063	1,980	2,263	2,785	49	<b>9,140</b>	932	233	<b>1,165</b>
<b>2017</b>	1,960	2,146	2,568	3,161	170	<b>10,005</b>	1,360	542	<b>1,902</b>	1,860	2,028	2,411	2,794	43	<b>9,136</b>	885	263	<b>1,148</b>
<b>2018</b>	1,766	1,959	2,491	3,186	159	<b>9,561</b>	1,199	452	<b>1,651</b>	1,709	1,867	2,366	2,834	44	<b>8,820</b>	858	225	<b>1,083</b>
<b>2019</b>	1,495	1,800	2,319	3,182	177	<b>8,973</b>	1,117	407	<b>1,524</b>	1,452	1,734	2,204	2,851	36	<b>8,277</b>	765	208	<b>973</b>
<b>2020</b>	1,546	1,538	2,150	2,977	93	<b>8,304</b>	828	390	<b>1,218</b>	1,488	1,494	2,070	2,676	21	<b>7,749</b>	672	216	<b>888</b>
<b>2021</b>	1,554	1,490	1,907	2,867	163	<b>7,981</b>	856	394	<b>1,250</b>	1,491	1,440	1,817	2,559	39	<b>7,346</b>	678	226	<b>904</b>
<b>Total Headcount:</b>							9,231			<b>Total FTE:</b>						8,250		

## First Major Only by College and Level Fall 2017 - 2021

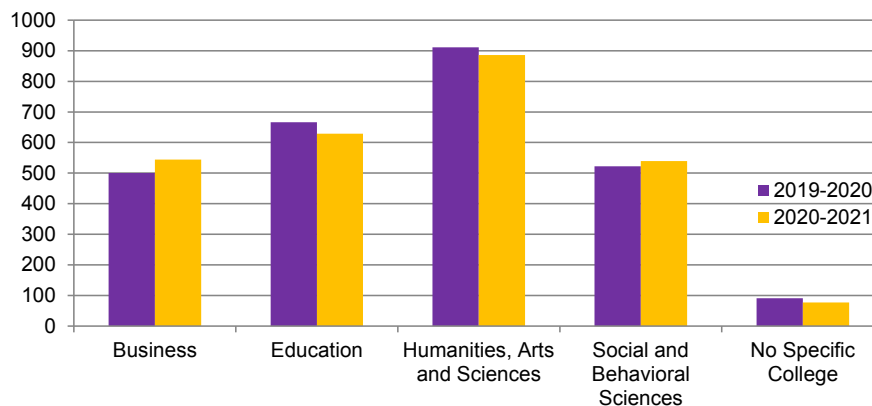
	Undergraduate					Graduate				
	2017	2018	2019	2020	2021	2017	2018	2019	2020	2021
<b>Total University</b>	<b>10,005</b>	<b>9,561</b>	<b>8,973</b>	<b>8,304</b>	<b>7,981</b>	<b>1,902</b>	<b>1,651</b>	<b>1,524</b>	<b>1,218</b>	<b>1,250</b>
Business	2,009	1,907	1,716	1,627	1,574	155	174	100	142	91
Education	2,224	2,125	2,019	1,821	1,779	545	499	448	438	421
Humanities, Arts and Sciences	3,336	3,093	2,945	2,707	2,473	411	392	339	324	288
Social and Behavioral Sciences	1,623	1,579	1,507	1,503	1,458	248	256	251	223	231
No Specific College	813	857	786	646	697	543	330	386	91	219

## Annual Degrees Awarded by Level 2011 - 2021

	2010- 2011	2011- 2012	2012- 2013	2013- 2014	2014- 2015	2015- 2016	2016- 2017	2017- 2018	2018- 2019	2019- 2020	2020- 2021	5 Yr % Change	10 Yr % Change
<b>Total Degrees Awarded</b>	<b>2,725</b>	<b>3,034</b>	<b>2,875</b>	<b>2,897</b>	<b>2,768</b>	<b>2,692</b>	<b>2,579</b>	<b>2,722</b>	<b>2,739</b>	<b>2,690</b>	<b>2,675</b>	<b>-0.6</b>	<b>-1.8</b>
Baccalaureate	2,198	2,440	2,349	2,357	2,303	2,166	2,126	2,184	2,178	2,235	2,227	2.8	1.3
Master's	509	572	483	512	446	503	431	508	534	437	429	-14.7	-15.7
Specialists	5	10	13	8	5	9	8	7	8	7	11	22.2	120.0
Doctorates	13	12	30	20	14	14	14	23	19	11	8	-42.9	-38.5
<b>Undergraduate Degrees Awarded</b>	<b>2,198</b>	<b>2,440</b>	<b>2,349</b>	<b>2,357</b>	<b>2,303</b>	<b>2,166</b>	<b>2,126</b>	<b>2,184</b>	<b>2,178</b>	<b>2,235</b>	<b>2,227</b>	<b>2.8</b>	<b>1.3</b>
Bachelor of Applied Science										2	5		
Bachelor of Arts	2,079	2,293	2,227	2,209	2,142	2,025	1,949	1,991	1,998	2,018	2,028	0.1	-2.5
Bachelor of Fine Arts	6	11	11	11	8	7	6	7	6	11	5	-28.6	-16.7
Bachelor of Music	15	22	18	34	25	21	33	25	20	27	31	47.6	106.7
Bachelor of Science	84	98	79	86	91	76	92	96	114	131	115	51.3	36.9
Bachelor of Liberal Studies	14	16	14	17	37	37	46	65	40	46	43	16.2	207.1
<b>Graduate Degrees Awarded</b>	<b>527</b>	<b>594</b>	<b>526</b>	<b>540</b>	<b>465</b>	<b>526</b>	<b>453</b>	<b>538</b>	<b>561</b>	<b>455</b>	<b>448</b>	<b>-14.8</b>	<b>-15.0</b>
Master of Accounting	21	25	20	18	23	13	20	18	20	8	19	46.2	-9.5
Master of Arts in Education	105	121	104	118	112	104	80	57	91	61	67	-35.6	-36.2
Master of Arts	255	284	235	242	190	285	233	304	240	261	232	-18.6	-9.0
Master of Athletic Training										1	3		
Master of Business Administration	31	27	28	36	38	30	18	36	107	32	55	83.3	77.4
Master of Music	10	26	11	15	13	17	17	25	13	19	6	-64.7	-40.0
Master of Public Policy	10	11	9	11	12	0	0	10	0	9	1		-90.0
Master of Science	19	21	22	23	26	17	23	17	13	15	11	-35.3	-42.1
Master of Social Work	41	40	33	37	32	34	37	38	50	31	35	2.9	-14.6
Professional Science Master's	17	17	21	12	0	3	3	3	0	0	0	-100.0	-100.0
Specialist in Education	5	10	13	8	5	9	8	7	8	7	11	22.2	120.0
Doctor of Technology/Doctor of Industrial Technology	1	1	4	6	2	0	2	1	1	2	3		
Doctor of Education	12	11	26	14	12	14	12	22	18	9	5	-64.3	-58.3

## Degrees Granted by College 2019 - 2020 and 2020 - 2021

	Baccalaureates				Master's				Specialists				Doctorates			
	2019-2020		2020-2021		2019-2020		2020-2021		2019-2020		2020-2021		2020-2021		2019-2020	
	N	%	N	%	N	%	N	%	N	%	N	%	N	%	N	%
<b>Total Degrees Granted</b>	<b>2,235</b>	<b>100</b>	<b>2,227</b>	<b>100</b>	<b>437</b>	<b>100</b>	<b>429</b>	<b>100</b>	<b>7</b>	<b>100</b>	<b>11</b>	<b>100</b>	<b>11</b>	<b>100</b>	<b>8</b>	<b>100</b>
Business	460	20.6	470	21.1	40	9.2	74	17.2	0	0.0	0	0.0	0	0.0	0	0.0
Education	511	22.9	488	21.9	139	31.8	125	29.1	7	100.0	11	100.0	9	81.8	5	62.5
Humanities, Arts and Sciences	764	34.2	732	32.9	145	33.2	151	35.2	0	0.0	0	0.0	2	18.2	3	37.5
Social and Behavioral Sciences	424	19.0	464	20.8	98	22.4	75	17.5	0	0.0	0	0.0	0	0.0	0	0.0
No Specific College	76	3.4	73	3.3	15	3.4	4	0.9	0	0.0	0	0.0	0	0.0	0	0.0



## Degrees Granted by Race/Ethnicity 2019 - 2020 and 2020 - 2021

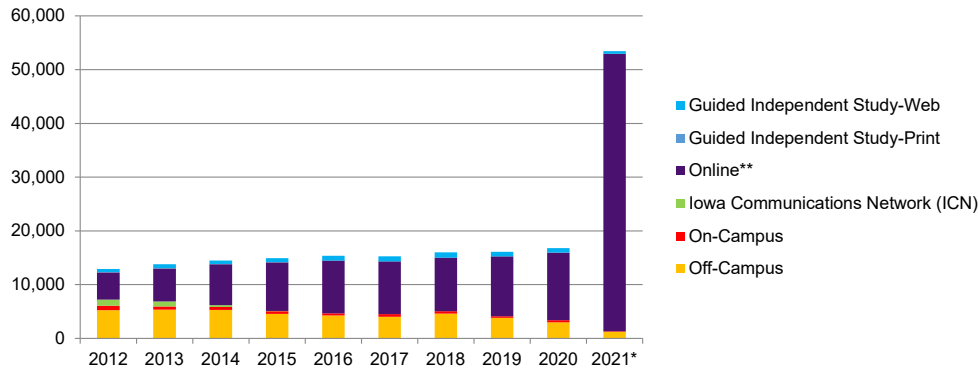
	Baccalaureates				Master's				Specialists				Doctorates			
	2019-2020		2020-2021		2019-2020		2020-2021		2019-2020		2020-2021		2019-2020		2020-2021	
	N	%	N	%	N	%	N	%	N	%	N	%	N	%	N	%
<b>Total Degrees Granted</b>	<b>2,235</b>	<b>100</b>	<b>2,227</b>	<b>100</b>	<b>437</b>	<b>100</b>	<b>429</b>	<b>100</b>	<b>7</b>	<b>100</b>	<b>11</b>	<b>100</b>	<b>11</b>	<b>100</b>	<b>8</b>	<b>100</b>
American Indian/Alaskan Native	5	0.2	4	0.2	0	0.0	0	0.0	0	0.0	0	0.0	0	0.0	0	0.0
Asian	28	1.3	33	1.5	3	0.7	6	1.4	0	0.0	0	0.0	0	0.0	0	0.0
Black/African American	43	1.9	63	2.8	9	2.1	8	1.9	0	0.0	0	0.0	2	18.2	1	12.5
Hispanic	91	4.1	92	4.1	17	3.9	10	2.3	0	0.0	1	9.1	0	0.0	0	0.0
International	72	3.2	79	3.5	43	9.8	70	16.3	0	0.0	0	0.0	3	27.3	3	37.5
Not Available	79	3.5	80	3.6	14	3.2	8	1.9	0	0.0	0	0.0	0	0.0	0	0.0
Native Hawaiian/Pacific Islander	4	0.2	3	0.1	0	0.0	0	0.0	0	0.0	0	0.0	0	0.0	0	0.0
Two or More	48	2.2	44	2.0	3	0.7	8	1.9	0	0.0	1	9.1	0	0.0	0	0.0
White	1,865	83.4	1,829	82.1	348	79.6	319	74.4	7	100.0	9	81.8	6	54.5	4	50.0

## Undergraduate Retention and Graduation Rates 2001 - 2021

Admit Year	Total First Time Freshmen	Continuing 2nd Year		Graduating 4th Year		Graduating 6th Year	
		N	%	N	%	N	%
2001	2,064	1,681	81.4	672	32.6	1,348	65.3
2002	1,822	1,469	80.6	614	33.7	1,152	63.2
2003	1,740	1,417	81.4	618	35.5	1,160	66.7
2004	1,652	1,337	80.9	584	35.4	1,110	67.2
2005	1,694	1,390	82.1	616	36.4	1,130	66.7
2006	1,684	1,386	82.3	648	38.5	1,117	66.3
2007	1,922	1,608	83.7	708	36.8	1,278	66.5
2008	1,976	1,627	82.3	747	37.8	1,261	63.8
2009	1,917	1,582	82.5	721	37.6	1,296	67.6
2010	1,934	1,586	82.0	759	39.2	1,258	65.0
2011	1,897	1,543	81.3	756	39.9	1,277	67.3
2012	1,678	1,391	82.9	671	40.0	1,096	65.3
2013	1,689	1,430	84.7	731	43.3	1,137	67.3
2014	1,762	1,411	80.1	715	40.6	1,118	63.5
2015	1,874	1,609	85.9	827	44.1	1,288	68.7
2016	1,963	1,593	81.2	848	43.2		
2017	1,813	1,515	83.6	816	45.0		
2018	1,653	1,379	83.4				
2019	1,453	1,243	85.5				
2020	1,474	1,187	80.5				

## Continuing Education Credit Enrollment Trends 2011 - 2021

	2011- 2012	2012- 2013	2013- 2014	2014- 2015	2015- 2016	2016- 2017	2017- 2018	2018- 2019	2019- 2020	2020- 2021*
<b>Total</b>	<b>12,924</b>	<b>13,818</b>	<b>14,481</b>	<b>14,906</b>	<b>15,378</b>	<b>15,271</b>	<b>15,987</b>	<b>16,099</b>	<b>16,790</b>	<b>53,448</b>
Annual Percent Change	5.1	6.9	4.8	2.9	3.2	-0.7	4.7	0.7	4.3	218.33
Off-Campus	5,257	5,336	5,313	4,561	4,260	4,014	4,611	3,816	2,992	1,203
On-Campus	846	616	530	514	416	493	446	329	372	114
Iowa Communications Network (ICN)	1,123	898	320	35	0	0	0	0	0	0
Online**	5,041	6,153	7,627	9,043	9,792	9,836	9,975	11,137	12,620	51,614
Guided Independent Study-Print	63	67	41	40	28	20	8	10	0	0
Guided Independent Study-Web	594	748	650	713	882	908	947	807	806	517



Source: Continuing Education and Special Programs

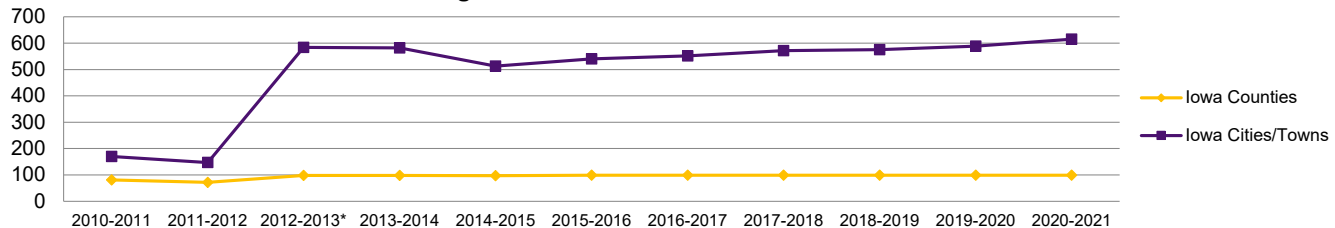
\*Increased enrollment in online courses in 2020-2021 due to the pandemic.

\*\*Includes enrollment in online and hybrid courses.

## Continuing Education Courses Offered 2011 - 2021

	Iowa Counties	Iowa Cities/Towns*	Number of Off-Campus Degree and Certificate Programs
2010-2011	81	170	24
2011-2012	72	147	25
2012-2013*	98	584	27
2013-2014	98	582	32
2014-2015	97	513	37
2015-2016	99	540	44
2016-2017	99	552	42
2017-2018	99	572	40
2018-2019	99	575	40
2019-2020	99	589	40
2020-2021	99	615	40

Continuing Education Course Locations Offered

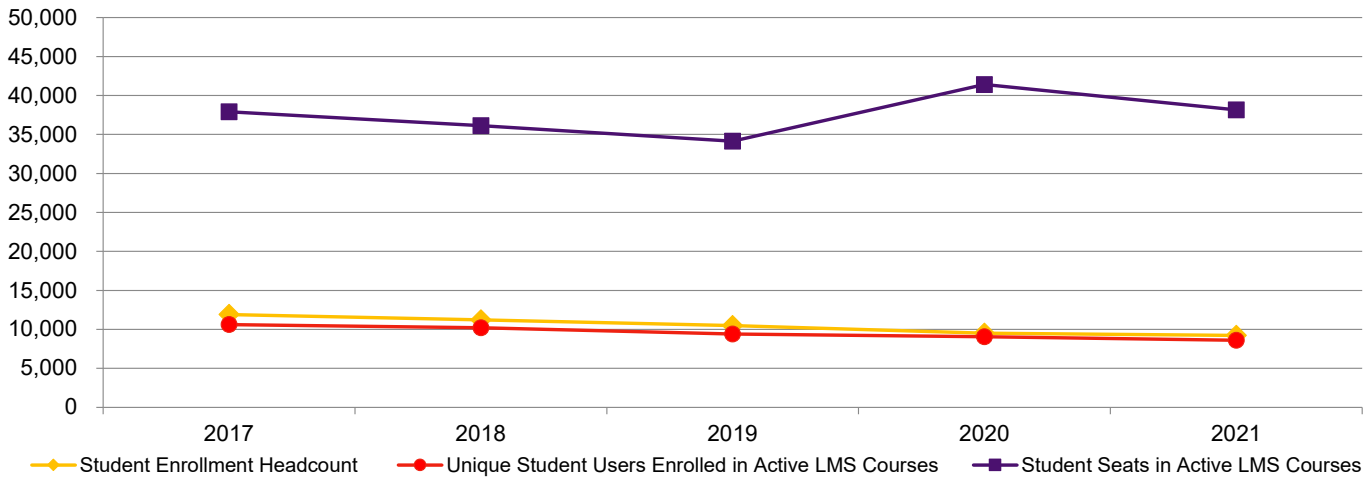


Source: Continuing Education and Special Programs

\*Effective 2012-2013, Iowa Cities/Towns reflects locations in which students enrolled in courses offered at an off-campus location, an ICN location, in a guided independent study course, or in an online (semester) course. Prior to 2012-2013, locations reflected only students enrolled in off-campus, ICN, or guided independent study courses. Including city/town locations for students enrolled in online courses brings reporting in line with practices at the other Iowa Regent universities.

## Web-Based Learning Management System (LMS) 2017 - 2021

	2017	2018	Fall 2019	2020	2021
Student Enrollment Headcount	11,907	11,212	10,497	9,522	9,231
Unique Student Users Enrolled in Active LMS Courses	10,618	10,207	9,410	9,079	8,610
Student Seats in Active LMS Courses	37,900	36,120	34,142	41,415	38,157
Instructors in Active LMS Courses	605	610	570	644	616
Academic Sections Active in LMS	1,584	1,601	1,494	2,115	1,773



Source: IT - Educational Technology & Media Services

## Fall Semester Residence Hall Occupancy by Gender and Level 2011 - 2021

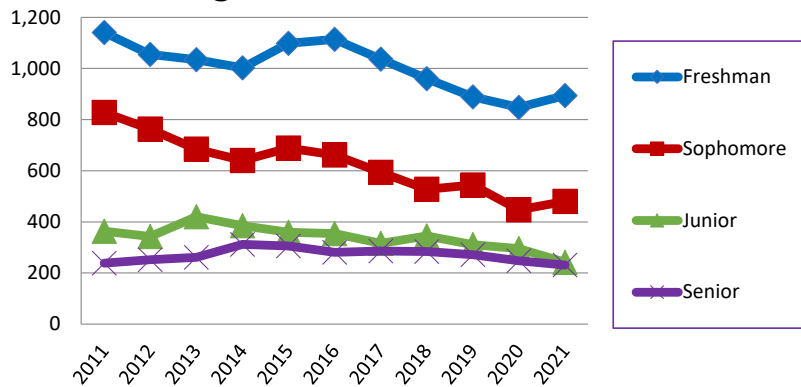
### Female

	Freshman	Sophomore	Junior	Senior	Unclassified & Graduates
<b>2011</b>	1,141	828	363	238	78
<b>2012</b>	1,055	763	343	252	84
<b>2013</b>	1,034	685	420	261	88
<b>2014</b>	1,003	640	385	312	109
<b>2015</b>	1,099	689	359	306	151
<b>2016</b>	1,114	662	354	281	139
<b>2017</b>	1,037	594	316	286	51
<b>2018</b>	960	528	345	284	64
<b>2019</b>	889	544	311	272	20
<b>2020</b>	848	447	295	248	43
<b>2021</b>	894	480	242	231	57

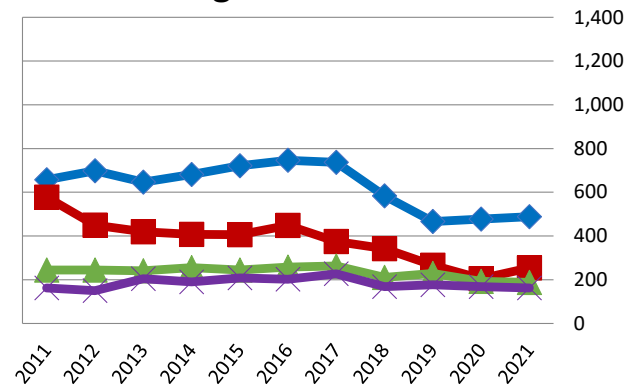
### Male

	Freshman	Sophomore	Junior	Senior	Unclassified & Graduates
<b>2011</b>	657	578	244	162	70
<b>2012</b>	698	450	244	150	84
<b>2013</b>	646	419	241	205	62
<b>2014</b>	681	407	255	190	106
<b>2015</b>	721	406	245	208	153
<b>2016</b>	746	448	258	202	148
<b>2017</b>	737	375	263	227	39
<b>2018</b>	584	342	211	169	71
<b>2019</b>	466	266	229	177	23
<b>2020</b>	477	205	193	169	28
<b>2021</b>	488	254	188	162	30

### Undergraduates - Female



### Undergraduates - Male



Source: Department of Residence



ALUMNI



ALUMNI

## Total Alumni by College 2017 - 2021

College	2017		2018		2019		2020		2021	
	N	%	N	%	N	%	N	%	N	%
<b>Subtotal Alumni*</b>	<b>121,173</b>		<b>123,217</b>		<b>125,248</b>		<b>127,221</b>		<b>127,733</b>	
<b>TOTAL Living Alumni**</b>	<b>116,766</b>		<b>118,729</b>		<b>120,686</b>		<b>122,603</b>		<b>123,097</b>	
Business	24,009	19.8	24,422	19.8	24,906	19.9	25,326	19.9	25,581	20.0
Education***	35,834	29.6	36,338	29.5	36,752	29.3	37,133	29.2	36,809	28.8
Humanities, Arts and Sciences	37,211	30.7	37,880	30.7	38,464	30.7	39,154	30.8	39,424	30.9
Social and Behavioral Sciences	20,232	16.7	20,611	16.7	21,062	16.8	21,489	16.9	21,740	17.0
College Unassigned/Interdisciplinary****	3,887	3.2	3,966	3.2	4,064	3.2	4,119	3.2	4,179	3.3

Source: *University Advancement 10-21-2021, including summer 2021 graduates*

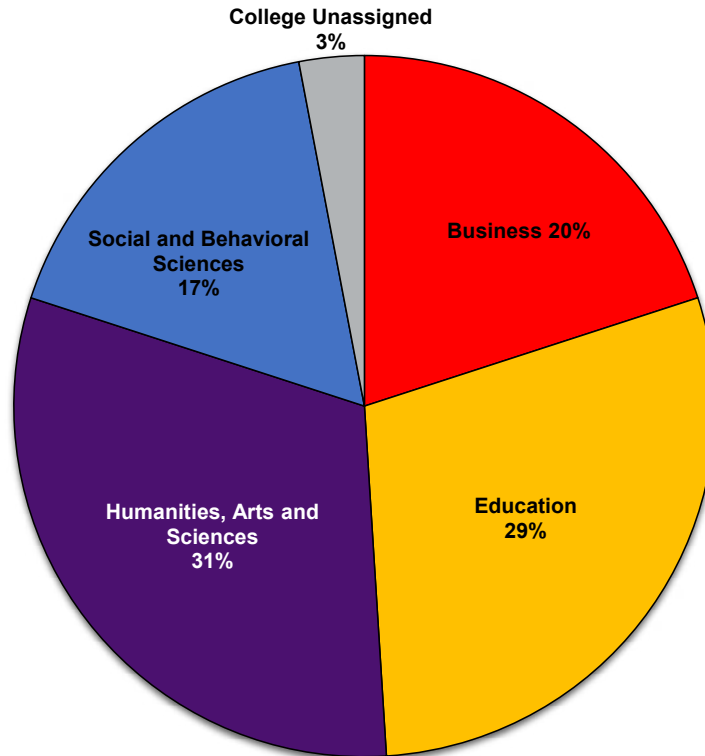
\*Alumni having earned degrees in different colleges are counted once in each college; alumni earning multiple degrees in the same college are counted only once for that college

\*\*Grads counted a single time even when earning multiple degree(s)

\*\*\*Includes 2-Year Teaching Certificates

\*\*\*\*Includes Individual Studies, General Studies, Liberal Studies, Interdisciplinary majors; college unassigned

## Total Living Alumni by College



Alumni = 123,097

## Alumni by State 2021\*

State	Alumni	State	Alumni
Alabama	214	Montana	183
Alaska	123	Nebraska	1,787
Arizona	2,239	Nevada	369
Arkansas	289	New Hampshire	77
California	2,311	New Jersey	181
Colorado	2,828	New Mexico	234
Connecticut	126	New York	462
Delaware	39	North Carolina	785
Florida	1,942	North Dakota	114
Georgia	701	Ohio	611
Hawaii	136	Oklahoma	316
Idaho	193	Oregon	552
Illinois	3,920	Pennsylvania	385
Indiana	679	Rhode Island	37
Iowa	78,026	South Carolina	349
Kansas	1,500	South Dakota	598
Kentucky	223	Tennessee	605
Louisiana	136	Texas	3,371
Maine	47	Utah	172
Maryland	313	Vermont	36
Massachusetts	221	Virginia	662
Michigan	623	Washington	817
Minnesota	5,478	West Virginia	30
Mississippi	83	Wisconsin	2,468
Missouri	2,099	Wyoming	125
		District of Columbia	92

Source: *University Advancement*

\*As of 10-21-2021, including summer 2021 graduates

## Alumni by Iowa County 2021

<u>County</u>	<u>Alumni</u>	<u>County</u>	<u>Alumni</u>	<u>County</u>	<u>Alumni</u>	<u>County</u>	<u>Alumni</u>
Adair	62	Decatur	33	Johnson	2,785	Pocahontas	121
Adams	27	Delaware	552	Jones	447	Polk	13,860
Allamakee	325	Des Moines	413	Keokuk	173	Pottawattamie	642
Appanoose	111	Dickinson	419	Kossuth	406	Poweshiek	481
Audubon	82	Dubuque	2,429	Lee	270	Ringgold	44
Benton	842	Emmet	125	Linn	7,397	Sac	188
Black Hawk	12,672	Fayette	599	Louisa	110	Scott	2,935
Boone	405	Floyd	570	Lucas	71	Shelby	109
Bremer	2,094	Franklin	247	Lyon	53	Sioux	209
Buchanan	1,126	Fremont	33	Madison	281	Story	1,597
Buena Vista	237	Greene	166	Mahaska	263	Tama	682
Butler	889	Grundy	957	Marion	542	Taylor	30
Calhoun	243	Guthrie	189	Marshall	955	Union	90
Carroll	467	Hamilton	361	Mills	91	Van Buren	44
Cass	162	Hancock	242	Mitchell	355	Wapello	355
Cedar	345	Hardin	693	Monona	51	Warren	1,168
Cerro Gordo	1,498	Harrison	95	Monroe	95	Washington	415
Cherokee	162	Henry	260	Montgomery	54	Wayne	38
Chickasaw	527	Howard	284	Muscatine	607	Webster	665
Clarke	60	Humboldt	236	O'Brien	190	Winnebago	335
Clay	333	Ida	99	Osceola	30	Winneshiek	644
Clayton	490	Iowa	325	Page	89	Woodbury	662
Clinton	714	Jackson	366	Palo Alto	231	Worth	205
Crawford	148	Jasper	554	Plymouth	300	Wright	314
Dallas	1,876	Jefferson	130				
Davis	73					TOTAL	78,026

Source: University Advancement 10-21-2021

## Post-Graduation Status of 2018 - 2019 and 2019 - 2020 Bachelor's Degree Recipients

College	Graduates	No Information	Total Responding	Employed*	Continuing Education	Undergrad Education
<b>2018 - 19</b>						
Business	424	32	386	320	42	
Education	504	129	375	476	140	
Humanities, Arts and Sciences	740	77	663	375	67	
Social & Behavioral Sciences	410	59	351	230	92	
<b>TOTAL</b>	<b>2,078</b>	<b>297</b>	<b>1,775</b>	<b>1,401</b>	<b>341</b>	<b>0</b>
			(1,775 of 2,078)	(1,401 of 1,775)	(341 of 1,775)	(0 of 1,775)
			<b>85.4%</b>	<b>78.9%</b>	<b>19.2%</b>	<b>0.00%</b>
<b>2019 - 20</b>						
Business	437	91	346	306	21	
Education	524	68	456	368	58	
Humanities, Arts and Sciences	713	141	572	420	107	
Social & Behavioral Sciences	418	83	335	243	62	
<b>TOTAL</b>	<b>2,092</b>	<b>383</b>	<b>1,709</b>	<b>1,337</b>	<b>248</b>	<b>0</b>
			(1,709 of 2,092)	(1,337 of 1,709)	(248 of 1,709)	(0 of 1,709)
			<b>81.7%</b>	<b>78.2%</b>	<b>14.5%</b>	<b>0.00%</b>

Source: Career Services

\*Method: Data was collected from one month prior to six months after graduation. Collection included surveys, employer reports and social media updates.

## Post-Graduation Status of 2019 - 2020 and 2020 - 2021 Graduate Degree Recipients\*

College	Graduates	No Information	Total Responding	Employed**	Continuing Education	Other
<b>2019 - 2020</b>						
Business	2	0	2	1	0	1
Education	19	2	17	11	0	6
Humanities, Arts and Sciences	14	2	12	8	0	4
Social & Behavioral Sciences	16	5	11	10	1	0
Interdisciplinary	0	0	0	0	0	0
<b>TOTAL</b>	<b>51</b>	<b>9</b>	<b>42</b>	<b>30</b>	<b>1</b>	<b>11</b>
			(42 of 51)	(30 of 42)	(1 of 42)	(11 of 42)
			<b>82.4%</b>	<b>71.4%</b>	<b>2.4%</b>	<b>26.2%</b>
<b>2020 - 2021</b>						
Business	12	0	12	9	0	0
Education	42	0	42	26	2	10
Humanities, Arts and Sciences	46	0	46	36	4	3
Social & Behavioral Sciences	31	0	31	20	2	7
Interdisciplinary	9	1	8	5	0	0
<b>TOTAL</b>	<b>140</b>	<b>1</b>	<b>139</b>	<b>96</b>	<b>8</b>	<b>20</b>
			(139 of 140)	(96 of 139)	(8 of 139)	(20 of 139)
			<b>99.3%</b>	<b>69.1%</b>	<b>5.8%</b>	<b>14.4%</b>

\*Method: Data was collected through a survey of graduates via students' university e-mails; changed data method from past years

\*\*76.3% of respondents employed in Iowa 2020 - 2021

2020 - 2021 only includes Fall 2020 survey respondents

## Undergraduate Plans for Further Education 2020 - 2021

College	Completed Survey		Accepted to a Graduate/Professional Program		Currently Applying to Programs		Accepted to Another Undergraduate Program	
	N	%	N	%	N	%	N	%
<b>TOTAL</b>	<b>918</b>	<b>100</b>	<b>86</b>	<b>100</b>	<b>49</b>	<b>100</b>	<b>4</b>	<b>100</b>
Business Administration	217	23.6%	15	17.4%	6	12.2%	3	75.0%
Education	210	22.9%	14	16.3%	6	12.2%	0	0.0%
Humanities, Arts and Sciences	311	33.9%	46	53.5%	19	38.8%	0	0.0%
Social and Behavioral Sciences	120	13.1%	9	10.5%	18	36.7%	0	0.0%
Interdisciplinary	60	6.5%	2	2.3%	0	0.0%	1	25.0%
			(86 of 918)		(49 of 918)		(4 of 918)	
			<b>9.4%</b>		<b>5.3%</b>		<b>0.4%</b>	

Data collected from December 2020 Graduating Senior Surveys

## Graduate Plans for Further Education 2020 - 2021

College	Completed Graduate Program Survey		Accepted to a Graduate/Professional Program		Currently Applying to Programs		No Response for Further Education	
	N	%	N	%	N	%	N	%
<b>TOTAL</b>	<b>140</b>	<b>100.0%</b>	<b>7</b>	<b>5.0%</b>	<b>3</b>	<b>2.1%</b>	<b>130</b>	<b>92.9%</b>
Business	12	8.6%	0	0.0%	0	0.0%	12	9.2%
Education	42	30.0%	1	14.3%	1	33.3%	40	30.8%
Humanities, Arts and Sciences	46	32.9%	4	57.1%	1	33.3%	41	31.5%
Social and Behavioral Sciences	31	22.1%	2	28.6%	1	33.3%	28	21.5%
Interdisciplinary	9	6.4%	0	0.0%	0	0.0%	9	6.9%
			(7 of 140)		(3 of 140)		(130 of 140)	
			<b>5.0%</b>		<b>2.1%</b>		<b>92.9%</b>	

Data collected from December 2020 Graduating Senior Surveys



FACULTY & STAFF



FACULTY & STAFF

## Fall 2021 Faculty Profile by College

	Total University	Business	Education	Humanities, Arts & Sciences	Social & Behavioral Sciences	Continuing Education No Specific	Library
Faculty	626	68	127	286	108	22	15
Full-Time	510	53	110	240	83	9	15
Part-Time	116	15	17	46	25	13	0
Female	330	25	88	131	59	15	12
Male	296	43	39	155	49	7	3
American Indian/Alaskan Native	0	0	0	0	0	0	0
Asian/Pacific Islander	57	17	7	24	8	0	1
Black/African American	20	3	3	10	3	1	0
Hispanic/Latino	16	0	2	10	3	1	0
Native Hawaiian/Other Pacific Islander	1	0	0	1	0	0	0
Race and Ethnicity Unknown	2	1	0	0	1	0	0
Two or more races	6	0	1	3	2	0	0
White	524	47	114	238	91	20	14
Professors	163	13	23	83	35	7	2
Associate Professors	168	15	33	83	25	3	9
Assistant Professors	91	12	23	34	18	1	3
Instructors/Lecturers	204	28	48	86	30	11	1
Tenured	343	28	66	168	60	10	11
Tenure-Track	86	12	21	32	18	0	3
Non Tenure-Track	197	28	40	86	30	12	1

Includes Academic Department Heads and other Administrators with Faculty Rank but excludes Deans and above

## Fall 2021 Faculty by College, Legal Sex and Tenure Status

	Full-Time		Part-Time		Total	
	Female	Male	Female	Male	Female	Male
<b>Business</b>	<b>18</b>	<b>35</b>	<b>7</b>	<b>8</b>	<b>25</b>	<b>43</b>
Tenured	7	19	1	1	8	20
Tenure-Track	4	8	0	0	4	8
Non Tenure-Track	7	8	6	7	13	15
<b>Education</b>	<b>74</b>	<b>36</b>	<b>14</b>	<b>3</b>	<b>88</b>	<b>39</b>
Tenured	43	21	2	0	45	21
Tenure-Track	14	7	0	0	14	7
Non Tenure-Track	17	8	12	3	29	11
<b>Humanities, Arts and Sciences</b>	<b>107</b>	<b>133</b>	<b>24</b>	<b>22</b>	<b>131</b>	<b>155</b>
Tenured	66	99	1	2	67	101
Tenure-Track	16	16	0	0	16	16
Non Tenure-Track	25	18	23	20	48	38
<b>Social and Behavioral Sciences</b>	<b>42</b>	<b>41</b>	<b>17</b>	<b>8</b>	<b>59</b>	<b>49</b>
Tenured	26	33	0	1	26	34
Tenure-Track	13	5	0	0	13	5
Non Tenure-Track	3	3	17	7	20	10

Includes Academic Department Heads and other Administrators with Faculty Rank but excludes Deans and above

Continued on next page

## Fall 2021 Faculty by College, Legal Sex and Tenure Status (continued)

	Full-Time		Part-Time		Total	
	Female	Male	Female	Male	Female	Male
<b>Cont Ed &amp; Special Prog or No Specific</b>	<b>4</b>	<b>5</b>	<b>11</b>	<b>2</b>	<b>15</b>	<b>7</b>
Tenured	4	5	0	0	4	5
Tenure-Track	0	0	0	0	0	0
Non Tenure-Track	0	0	11	2	11	2
<b>Library</b>	<b>12</b>	<b>3</b>	<b>0</b>	<b>0</b>	<b>12</b>	<b>3</b>
Tenured	8	3	0	0	8	3
Tenure-Track	3	0	0	0	3	0
Non Tenure-Track	1	0	0	0	1	0
<b>All Faculty</b>	<b>257</b>	<b>253</b>	<b>73</b>	<b>43</b>	<b>330</b>	<b>296</b>
Tenured	154	180	4	4	158	184
Tenure-Track	50	36	0	0	50	36
Non Tenure-Track	53	37	69	39	122	76

Includes Academic Department Heads and other Administrators with Faculty Rank but excludes Deans and above

## UNI Workforce by Employment Categories 2011 - 2021

Categories	2011 N	2012 N	2013 N	2014 N	2015 N	2016 N	2017 N	2018 N	2019 N	2020 N	2021 N	5 Year % Change	10 Year % Change
<b>Total Workforce*</b>	<b>1,894</b>	<b>1,801</b>	<b>1,819</b>	<b>1,861</b>	<b>1,835</b>	<b>1,816</b>	<b>1,820</b>	<b>1,811</b>	<b>1,736</b>	<b>1,650</b>	<b>1,584</b>	<b>-12.8</b>	<b>-16.4</b>
Annual Percent Change	2.8	-4.9	1.0	2.3	-1.4	-1.0	0.2	-0.5	-4.1	-5.0	-4.0		
Executive/Managerial	94	95	93	97	95	102	99	103	101	107	103	1.0	9.6
Faculty - Tenure/Tenure-Track**	552	519	525	531	517	488	471	450	431	413	383	-21.5	-30.6
Faculty - Term/Renewable Term	63	37	36	47	51	49	54	56	58	60	61	24.5	-3.2
Professional/Scientific	603	592	609	622	638	652	668	685	658	608	590	-9.5	-2.2
Secretarial/Clerical	264	254	249	249	230	232	228	222	204	187	177	-23.7	-33.0
Technical/Paraprofessional	22	20	20	21	16	19	18	18	19	19	15	-21.1	-31.8
Skilled Crafts	55	56	59	59	57	58	60	54	53	48	48	-17.2	-12.7
Service/Maintenance	241	228	228	235	231	216	222	223	212	208	207	-4.2	-14.1

Source: Office of Human Resource Services

\*Excludes temporary and second appointments

\*\*Excludes some faculty with administrative appointments

## UNI Workforce Headcount and FTE by Employment Categories 2017 - 2021

Categories	2017		2018		2019		2020		2021	
	N	FTE	N	FTE	N	FTE	N	FTE	N	FTE
<b>Total Workforce*</b>	<b>1,820</b>	<b>1,721.5</b>	<b>1,811</b>	<b>1,719.6</b>	<b>1,736</b>	<b>1,667.2</b>	<b>1,650</b>	<b>1,583.6</b>	<b>1,584</b>	<b>1,529.4</b>
Annual Percent Change		0.1		-5.5		-7.9		-8.8		-7.3
Executive/Managerial	99	99.0	103	102.9	101	101.0	107	107.0	103	103.0
Faculty -Tenure/Tenure-Track**	471	455.9	450	437.1	431	425.4	413	403.3	383	377.1
Faculty -Term/Renewable	54	53.5	56	56.0	58	58.0	60	60.0	61	60.6
Professional/Scientific	668	616.3	685	633.7	658	614.3	608	572.0	590	564.0
Secretarial/Clerical	228	215.1	222	211.5	204	196.8	187	181.1	177	171.4
Technical/Paraprofessional	18	17.0	18	17.2	19	18.5	19	18.5	15	14.8
Skilled Crafts	60	59.3	54	52.9	53	53.0	48	48.0	48	47.5
Service/Maintenance	222	205.4	223	208.3	212	200.3	208	193.7	207	191.0

Source: Office of Human Resource Services

\*Excludes temporary

\*\*Excludes some faculty with administrative appointments

## UNI Workforce by Race/Ethnicity 2017 - 2021

Categories	2017		2018		2019		2020		2021	
	N	%	N	%	N	%	N	%	N	%
<b>Total Workforce*</b>	<b>1,820</b>		<b>1,811</b>		<b>1,736</b>		<b>1,650</b>		<b>1,584</b>	
Annual Percent Change		0.2		-0.5		-4.1		-5.0		-4.0
American Indian/Alaskan Native	4	0.2	4	0.2	5	0.3	5	0.3	4	0.3
Asian	69	3.8	79	4.4	80	4.6	76	4.6	71	4.5
Black/African American	81	4.5	91	5.0	78	4.5	72	4.4	68	4.3
Hispanic	38	2.1	39	2.2	46	2.6	48	2.9	44	2.8
White	1,612	88.6	1,578	87.1	1,508	86.9	1,433	86.8	1,381	87.2
Native Hawaiian/Pacific Islander	1	0.1	1	0.1	1	0.1	2	0.1	2	0.1
Two or more	15	0.8	19	1.0	18	1.0	14	0.8	14	0.9
Unknown	0	0.0	0	0.0	0	0.0	0	0.0	0	0.0

Source: Office of Human Resource Services

\*Excludes temporary and second appointments

## UNI Workforce by Employment Categories and Race/Ethnicity Fall 2021

	American Indian/ Alaskan Native	Asian	Black/ African American	Hispanic	White	Native Hawaiian/ Pacific Islander	or Two More	Total
<b>Total Workforce*</b>	<b>4</b>	<b>71</b>	<b>68</b>	<b>44</b>	<b>1,381</b>	<b>2</b>	<b>14</b>	<b>1,584</b>
Executive/Managerial	1	2	6	3	90	0	1	<b>103</b>
Faculty - Tenure/Tenure-Track**	0	52	11	12	306	1	1	<b>383</b>
Faculty - Term/Renewable Term**	0	1	3	0	55	0	2	<b>61</b>
Professional/Scientific	2	11	24	17	528	0	8	<b>590</b>
Secretarial/Clerical	0	2	7	2	165	0	1	<b>177</b>
Technical/Paraprofessional	0	0	2	1	12	0	0	<b>15</b>
Skilled Crafts	0	0	1	1	46	0	0	<b>48</b>
Service/Maintenance	1	3	14	8	179	1	1	<b>207</b>

Source: Office of Human Resource Services

\*Excludes temporary and second appointments

\*\*Excludes some faculty with administrative appointments

## UNI Workforce Headcount and FTE by Employment Categories and College Fall 2021

	Total University		Business		Education		Humanities, Arts & Sciences		Social & Behavioral Sciences		No Specific College	
	N	FTE	N	FTE	N	FTE	N	FTE	N	FTE	N	FTE
<b>Total Workforce*</b>	<b>1,584</b>	<b>1,529.4</b>	<b>107</b>	<b>103.2</b>	<b>153</b>	<b>148.8</b>	<b>325</b>	<b>312.8</b>	<b>120</b>	<b>113.9</b>	<b>879</b>	<b>850.7</b>
Executive/Managerial	103	103.0	7	7.0	9	9.0	20	20.0	10	10.0	57	57.0
Faculty - Tenure/Tenure-Track**	383	377.1	35	34.3	79	78.6	184	181.3	70	68.4	15	14.7
Faculty - Term/Renewable Term**	61	60.6	17	16.6	17	17.0	22	22.0	5	5.0	0	0.0
Professional/Scientific	590	564.0	41	38.3	35	31.8	65	57.1	20	18.1	429	418.7
Secretarial/Clerical	177	171.4	7	7.0	13	12.5	28	26.6	15	12.4	114	112.9
Technical/Paraprofessional	15	14.8	0	0.0	0	0.0	5	4.8	0	0.0	10	10.0
Skilled Crafts	48	47.5	0	0.0	0	0.0	0	0.0	0	0.0	48	47.5
Service/Maintenance	207	191.0	0	0.0	0	0.0	1	1.0	0	0.0	206	190.0

Source: Office of Human Resource Services

\*Excludes temporary

\*\*Excludes some faculty with administrative appointments

## UNI Workforce by Employment Categories, Legal Sex and College Fall 2021

Fall 2021	Total University		Business		Education		Humanities, Arts & Sciences		Social & Behavioral Sciences		No Specific College	
	F	M	F	M	F	M	F	M	F	M	F	M
<b>Total Workforce*</b>	<b>870</b>	<b>714</b>	<b>53</b>	<b>54</b>	<b>112</b>	<b>41</b>	<b>163</b>	<b>162</b>	<b>70</b>	<b>50</b>	<b>472</b>	<b>407</b>
Executive/ Managerial	50	53	4	3	6	3	9	11	4	6	27	30
Faculty - Tenure/ Tenure-Track**	186	197	9	26	54	25	75	109	37	33	11	4
Faculty - Term/ Renewable Term	34	27	8	9	10	7	13	9	3	2	0	0
Professional/ Scientific	335	255	25	16	29	6	38	27	12	8	231	198
Secretarial/ Clerical	168	9	7	0	13	0	28	0	14	1	106	8
Technical/ Paraprofessional	3	12	0	0	0	0	0	5	0	0	3	7
Skilled Crafts	1	47	0	0	0	0	0	0	0	0	1	47
Service/ Maintenance	93	114	0	0	0	0	0	1	0	0	93	113

Source: Office of Human Resource Services

\*Excludes temporary and second appointments

\*\*Excludes some faculty with administrative appointments

## UNI Workforce by Employment Categories, Level and College Fall 2021

Fall 2021	Total University		Business		Education		Humanities, Arts & Sciences		Social & Behavioral Sciences		No Specific College	
	F-T	P-T	F-T	P-T	F-T	P-T	F-T	P-T	F-T	P-T	F-T	P-T
<b>Total Workforce*</b>	<b>1,505</b>	<b>79</b>	<b>97</b>	<b>10</b>	<b>148</b>	<b>5</b>	<b>300</b>	<b>25</b>	<b>106</b>	<b>14</b>	<b>854</b>	<b>25</b>
Executive/ Managerial	101	2	6	1	8	1	20	0	10	0	57	0
Faculty - Tenure/ Tenure-Track**	370	13	33	2	77	2	179	5	67	3	14	1
Faculty - Term/ Renewable Term**	59	2	15	2	17	0	22	0	5	0	0	0
Professional/ Scientific	557	33	36	5	34	1	51	14	17	3	419	10
Secretarial/ Clerical	161	16	7	0	12	1	23	5	7	8	112	2
Technical/ Paraprofessional	14	1	0	0	0	0	4	1	0	0	10	0
Skilled Crafts	47	1	0	0	0	0	0	0	0	0	47	1
Service/ Maintenance	196	11	0	0	0	0	1	0	0	0	195	11

Source: Office of Human Resource Services

\*Excludes temporary and second appointments

\*\*Excludes some faculty with administrative appointments

## UNI Workforce by Employment Categories, Level and Legal Sex Fall 2021

Fall 2021	Total University			Female			Male		
	F-T	P-T	Phased	F-T	P-T	Phased	F-T	P-T	Phased
<b>Total Workforce*</b>	<b>1,526</b>	<b>45</b>	<b>13</b>	<b>831</b>	<b>36</b>	<b>3</b>	<b>695</b>	<b>9</b>	<b>10</b>
Executive/Managerial	102	1	0	49	1	0	53	0	0
Faculty - Tenure/Tenure Track**	373	3	7	181	2	3	192	1	4
Faculty - Term/Renewable Term**	59	2	0	33	1	0	26	1	0
Professional/Scientific	565	24	1	316	19	0	249	5	1
Secretarial/Clerical	168	9	0	159	9	0	9	0	0
Technical/Paraprofessional	15	0	0	3	0	0	12	0	0
Skilled Crafts	47	0	1	1	0	0	46	0	1
Service/Maintenance	197	6	4	89	4	0	108	2	4

Source: Office of Human Resource Services

\*Excludes temporary and second appointments

\*\*Excludes some faculty with administrative appointments

## UNI Temporary Workforce Headcount and FTE by Employment Categories 2017 - 2021

Categories	2017		2018		2019		2020		2021	
	N	FTE	N	FTE	N	FTE	N	FTE	N	FTE
<i>Total Temporary Workforce*</i>	215	116.7	234	127.5	194	102.6	161	84.9	183	96.5
Executive/Managerial	1	0.5	0	0.0	0	0.0	0	0.0	0	0.0
Adjunct Faculty	172	99.9	179	106.2	152	83.1	125	63.9	137	74.6
Professional/Scientific	19	8.7	18	9.7	16	10.6	18	15.3	22	13.2
Merit Temporary Total (see Breakdown below)	23	7.6	37	11.6	26	9.0	18	5.7	24	8.7
<hr/>										
<i>Merit Temporary Workforce (Breakdown)</i>	23	7.6	37	11.6	26	9.0	18	5.7	24	8.7
<hr/>										
Secretarial/Clerical	4	1.7	10	4.5	4	2.0	1	0.1	2	0.9
Technical/Paraprofessional	0	0.0	0	0.0	0	0.0	0	0.0	2	1.1
Skilled Crafts	0	0.0	0	0.0	0	0.0	0	0.0	0	0.0
Service/Maintenance	19	5.9	27	7.1	22	7.0	17	5.6	20	6.7

Source: Office of Human Resource Services

\*Excludes some faculty with administrative appointments



# BUDGET & FINANCE





# BUDGET & FINANCE



## Statement of Revenues, Expenses and Changes In Net Position 2017 - 2021

	2017	2018	2019	2020	2021
<b>OPERATING REVENUES</b>					
Tuition & Fees	\$94,795,754	\$97,290,076	\$94,509,689	\$87,939,829	\$82,346,130
Less Scholarship Allowance	-27,887,729	-29,328,890	-28,510,621	-26,362,669	-29,429,560
Net Tuition & Fees	\$66,908,025	\$67,961,186	\$65,999,068	\$61,577,160	\$52,916,570
Federal Grants and Contracts	13,493,398	13,480,630	13,308,944	10,471,492	9,835,841
State and Local Grants and Contracts	2,313,573	2,395,237	1,951,083	1,536,350	1,878,879
Nongovernmental Grants and Contracts	4,435,154	4,781,511	4,609,639	4,754,428	4,639,669
Sales and Services of Educational Activities	6,611,381	5,655,563	5,236,235	4,504,409	3,413,108
Interest on Student Loans	211,196	144,314	83,586	247,504	93,923
Other Operating Revenue	745,911	675,173	1,588,105	1,058,018	774,098
Auxiliary Enterprises	62,830,797	60,558,630	65,844,567	52,258,082	45,063,131
<b>Total Operating Revenues</b>	<b>\$157,549,435</b>	<b>\$155,652,244</b>	<b>\$158,621,227</b>	<b>\$136,407,443</b>	<b>\$118,615,219</b>
<b>OPERATING EXPENSES</b>					
Instruction	\$84,157,892	\$80,901,677	\$80,498,985	\$78,078,950	\$70,159,642
Research	2,807,731	2,454,788	2,930,394	2,437,009	2,655,105
Public Service	21,158,018	20,535,785	19,908,014	19,158,773	16,417,781
Academic Support	24,453,665	24,957,576	24,512,568	24,672,884	30,158,698
Student Services	11,500,806	10,106,466	10,235,429	10,377,045	9,287,237
Institutional Support	27,154,337	24,849,345	26,465,594	15,173,659	18,146,749
Operation and Maintenance of Plant	21,447,650	23,527,282	26,533,442	26,231,184	26,448,363
Scholarships and Fellowships	5,860,458	6,143,564	5,683,836	8,232,105	5,293,125
Depreciation	18,534,457	19,112,827	19,400,815	19,463,291	19,309,669
Other Operating Expenses	185,557	263,616	214,348	286,480	132,652
Auxiliary Enterprises	53,724,329	55,824,400	61,223,473	54,409,747	49,346,851
<b>Total Operating Expenses</b>	<b>\$270,984,900</b>	<b>\$268,677,326</b>	<b>\$277,606,898</b>	<b>\$258,521,127</b>	<b>\$247,355,872</b>
Operating (Loss)	(113,435,465)	(113,025,082)	(118,985,671)	(122,113,684)	(128,740,653)

Continued on next page

## Statement of Revenues, Expenses and Changes In Net Position 2017 - 2021\* (continued)

	2017	2018	2019	2020	2021
<b>NON-OPERATING REVENUES (EXPENSES)</b>					
State Appropriations	\$ 101,899,530	\$ 101,377,509	\$ 103,414,372	\$ 108,523,295	\$ 107,046,544
Federal Grants and Contracts	10,790,666	11,657,278	11,190,012	17,966,861	32,443,810
Nonfederal Gifts, Grants and Contracts	3,269,948	3,956,027	3,857,346	3,127,041	3,541,783
Investment Income	3,089,487	2,619,365	4,852,700	3,090,283	9,340,307
Interest on Indebtedness	(5,227,863)	(5,290,179)	(3,075,139)	(2,881,783)	(2,395,942)
Miscellaneous Revenue/(Expense)	(310,215)	332,620	2,608,145	1,070,005	1,062,407
<b>Net Non-Operating Revenue</b>	<b>\$113,511,553</b>	<b>\$114,652,620</b>	<b>\$122,847,436</b>	<b>\$130,895,702</b>	<b>\$151,038,909</b>
<b>Gain/(Loss) Before Other Revenues</b>	<b>\$ 76,088</b>	<b>\$ 1,627,538</b>	<b>\$ 3,861,765</b>	<b>\$ 8,782,018</b>	<b>\$ 22,298,256</b>
Capital Appropriations	\$19,220,339	\$3,660,840	\$3,580,380	\$3,566,940	\$3,773,050
Capital Gifts, Grants and Contracts	6,285,081	2,570,423	1,891,806	2,269,111	1,563,244
<b>Total Other Revenues</b>	<b>\$25,505,420</b>	<b>\$6,231,263</b>	<b>\$5,472,186</b>	<b>\$5,836,051</b>	<b>\$5,336,294</b>
<b>Change in Net Position</b>	<b>\$25,581,508</b>	<b>\$7,858,801</b>	<b>\$9,333,951</b>	<b>\$14,618,069</b>	<b>\$27,634,550</b>
<b>NET POSITION</b>					
Total Net Position – July 1	\$350,874,220	\$371,246,326	\$379,105,127	\$388,439,078	\$403,057,147
Total Net Position – June 30	\$376,455,728	\$379,105,127	\$388,439,078	\$403,057,147	\$430,691,697

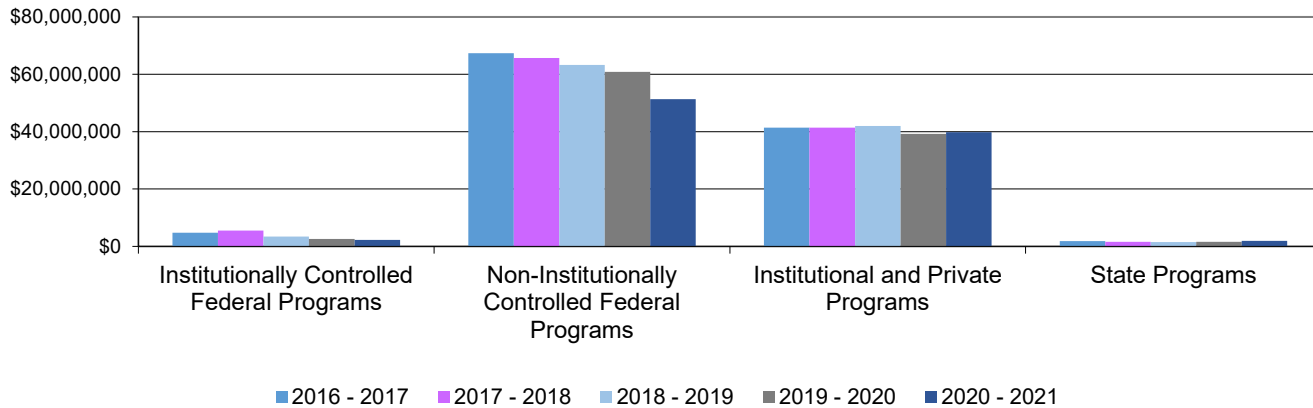
Source: Financial Accounting and Reporting Services

\*Fiscal year runs July 1 through June 30

## Financial Aid Programs by Source of Aid 2016 - 2017 to 2020 - 2021

	2016 - 2017	2017 - 2018	2018 - 2019	2019 - 2020	2020 - 2021	5 Year % Change
<b>TOTAL</b>	\$115,410,950	\$114,140,034	\$110,162,366	\$104,309,611	\$95,242,114	-15.4%
Institutionally Controlled Federal Programs	\$4,767,860	\$5,483,927	\$3,389,793	\$2,603,632	\$2,226,749	-61.3%
Non-Institutionally Controlled Federal Programs	\$67,325,519	\$65,656,073	\$63,299,755	\$60,863,357	\$51,312,148	-22.3%
Institutional and Private Programs	\$41,444,005	\$41,392,880	\$41,947,236	\$39,213,982	\$39,802,384	2.1%
State Programs	\$1,873,566	\$1,607,154	\$1,525,582	\$1,628,640	\$1,900,833	11.0%

Source of Financial Aid  
2015 through 2020



Source: Financial Aid Office

## Student Financial Aid Programs 2018 - 2019 to 2020 - 2021

	2018 - 2019			2019-2020			2020-2021		
	Number of Awards	Value of Awards	Mean Award	Number of Awards	Value of Awards	Mean Award	Number of Awards	Value of Awards	Mean Award
<b>TOTAL</b>	37,596	\$110,162,366	\$2,930	40,001	\$104,309,611	\$2,608	37,915	\$95,242,114	\$2,512
<b>Institutional &amp; Private Gift Aid</b>	15,853	\$ 26,343,638	\$1,662	15,945	\$ 25,467,065	\$1,597	17,029	\$ 27,845,212	\$1,635
Institutional Scholarships/Grants	9,887	14,170,283	\$1,433	10,424	13,316,276	\$1,277	11,498	15,547,052	\$1,352
Corporate/Private Scholarships	5,634	8,230,885	\$1,461	5,180	8,250,228	\$1,593	5,198	8,517,078	\$1,639
Athletic Scholarships	332	3,942,470	\$11,875	341	3,900,561	\$11,439	333	3,781,082	\$11,355
<b>Federal &amp; State Grants</b>	5,156	\$ 15,632,058	\$3,032	7,589	\$ 17,847,916	\$2,352	7,580	\$ 17,353,208	\$2,289
Federal Pell Grant	2,984	11,331,138	\$3,797	2,646	10,231,930	\$3,867	2,485	9,766,102	\$3,930
Supplemental Education Opportunity Grant	540	476,584	\$883	727	545,926	\$751	498	409,071	\$821
TEACH Grant	461	1,384,781	\$3,004	445	1,297,646	\$2,916	405	1,241,717	\$3,066
Other Federal Grant/Scholarship Programs	583	921,737	\$1,581	3,088	4,154,342	\$1,345	3,553	4,046,273	\$1,139
All Iowa Opportunity Scholarship	67	284,388	\$4,245	78	323,413	\$4,146	101	444,082	\$4,397
Iowa Foster Child Grant	0	0	\$0	0	0	\$0	0	0	\$0
Iowa Grant	0	0	\$0	0	0	\$0	0	0	\$0
National Guard	74	460,925	\$6,229	78	474,023	\$6,077	75	437,045	\$5,827
Vocational Rehabilitation	112	376,976	\$3,366	120	411,411	\$3,428	143	445,858	\$3,118
Commission for the Blind	5	31,760	\$6,352	4	24,220	\$6,055	3	32,107	\$10,702
Gear Up	-	-	\$0	2	1,800	\$900	136	155,100	\$1,140
Other State Grants	330	363,769	\$1,102	401	383,205	\$956	181	375,851	\$2,077
<b>Loans</b>	12,679	\$ 57,663,942	\$4,548	11,292	\$ 52,483,470	\$4,648	9,472	\$ 42,728,814	\$4,511
Federal Perkins	-	-	\$0	0	0	\$0	-	-	\$0
Direct Loans	11,814	51,858,044	\$4,390	10,469	46,682,915	\$4,459	8,747	37,588,907	\$4,297
Alternative Loans	865	5,805,898	\$6,712	823	5,800,555	\$7,048	725	5,139,907	\$7,090
<b>Employment</b>	3,908	\$ 10,522,728	\$2,693	5,175	\$ 8,511,160	\$1,645	3,834	\$ 7,314,883	\$1,908
Federal Work Study	469	654,036	\$1,395	401	502,279	\$1,253	309	449,063	\$1,453
Graduate Teaching, Research Assistantships	284	2,185,606	\$7,696	271	2,009,207	\$7,414	252	1,704,255	\$6,763
UNI Employment	3,155	7,683,086	\$2,435	4,503	5,999,674	\$1,332	3,273	5,161,566	\$1,577

Source: Financial Aid Office

## Full-Time Undergraduate Student Tuition and Fees 2001 - 2002 to 2021 - 2022

Academic Year	Academic Services	Activity	Athletics	Computing/Technology	Facilities	General Student Services	Health Services	Health Facility	Surcharge	Total Mandatory Fees	UG Tuition	Total Tuition & Mandatory Fees
2001-02		\$92		\$126			\$106			\$324	\$3,116	\$3,440
2002-03		\$174		\$140			\$112			\$426	\$3,692	\$4,118
2003-04				\$150	\$180	\$102	\$116	\$26		\$574	\$4,342	\$4,916
2004-05				\$165	\$180	\$190	\$124	\$26		\$685	\$4,702	\$5,387
2005-06				\$116	\$198	\$222	\$144	\$32		\$712	\$4,890	\$5,602
2006-07				\$178	\$232	\$231	\$152	\$33	\$200	\$1,026	\$5,086	\$6,112
2007-08				\$187	\$237	\$223	\$158	\$33		\$838	\$5,352	\$6,190
2008-09				\$193	\$237	\$227	\$162	\$33		\$852	\$5,524	\$6,376
2009-10		\$35		\$200	\$235	\$215	\$166	\$29	\$100	\$980	\$5,756	\$6,736
2010-11		\$45		\$212	\$235	\$213	\$172	\$29		\$906	\$6,102	\$7,008
2011-12		\$60		\$229	\$235	\$213	\$176	\$29		\$942	\$6,408	\$7,350
2012-13		\$65		\$252	\$235	\$217	\$189	\$29		\$987	\$6,648	\$7,635
2013-14		\$67		\$258	\$220	\$258	\$203	\$31		\$1,037	\$6,648	\$7,685
2014-15		\$68		\$270	\$224	\$295	\$213	\$31		\$1,101	\$6,648	\$7,749
2015-16		\$71		\$290	\$229	\$320	\$228	\$31		\$1,169	\$6,648	\$7,817
2016-17		\$114		\$300	\$261	\$225	\$236	\$31		\$1,167	\$7,098	\$8,265
2017-18		\$120		\$304	\$232	\$230	\$250	\$30		\$1,166	\$7,456	\$8,622
2018-19		\$122		\$300	\$242	\$230	\$258	\$31		\$1,183	\$7,666	\$8,849
2019-20		\$122		\$300	\$242	\$230	\$258	\$31		\$1,183	\$7,666	\$8,849
2020-21		\$122		\$300	\$242	\$230	\$258	\$31		\$1,183	\$7,666	\$8,849
2021-22		\$122		\$300	\$242	\$230	\$258	\$31		\$1,183	\$7,780	\$8,963

Source: <https://tuition.uni.edu/2021-2022-undergraduate-tuition-fees-overview>

All Non-College of Business Resident students

## Full-Time Graduate Student Tuition and Fees 2001 - 2002 to 2021 - 2022

Academic Year	Academic Services	Activity	Athletics	Computing/Technology	Facilities	General Student Services	Health Services	Health Facility	Surcharge	Total Mandatory Fees	Grad Tuition	Total Tuition & Mandatory Fees
2001-02		\$92		\$126			\$106			\$324	\$3,702	\$4,026
2002-03		\$174		\$140			\$112			\$426	\$4,388	\$4,814
2003-04				\$150	\$180	\$102	\$116	\$26		\$574	\$5,038	\$5,612
2004-05				\$165	\$180	\$190	\$124	\$26		\$685	\$5,488	\$6,173
2005-06				\$116	\$198	\$222	\$144	\$32		\$712	\$5,708	\$6,420
2006-07				\$178	\$232	\$231	\$152	\$33	\$200	\$1,026	\$5,936	\$6,962
2007-08				\$187	\$237	\$223	\$158	\$33		\$838	\$6,246	\$7,084
2008-09				\$193	\$237	\$227	\$162	\$33		\$852	\$6,446	\$7,298
2009-10		\$35		\$200	\$235	\$215	\$166	\$29	\$100	\$980	\$6,716	\$7,696
2010-11		\$45		\$212	\$235	\$213	\$172	\$29		\$906	\$7,120	\$8,026
2011-12		\$60		\$229	\$235	\$213	\$176	\$29		\$942	\$7,476	\$8,418
2012-13		\$65		\$252	\$235	\$217	\$189	\$29		\$987	\$7,756	\$8,743
2013-14		\$67		\$258	\$220	\$258	\$203	\$31		\$1,037	\$7,756	\$8,793
2014-15		\$68		\$270	\$224	\$295	\$213	\$31		\$1,101	\$7,912	\$9,013
2015-16		\$71		\$290	\$229	\$320	\$228	\$31		\$1,169	\$8,050	\$9,219
2016-17		\$114		\$300	\$230	\$225	\$236	\$31		\$1,136	\$8,592	\$9,728
2017-18		\$120		\$304	\$232	\$230	\$250	\$30		\$1,166	\$8,950	\$10,116
2018-19		\$122		\$300	\$242	\$230	\$258	\$31		\$1,183	\$9,159	\$10,342
2019-20		\$122		\$300	\$242	\$230	\$258	\$31		\$1,183	\$9,159	\$10,342
2020-21		\$122		\$300	\$242	\$230	\$258	\$31		\$1,183	\$9,159	\$10,342
2021-22		\$122		\$300	\$242	\$230	\$258	\$31		\$1,183	\$9,296	\$10,479

Source: <https://tuition.uni.edu/2021-2022-graduate-tuition-fees-overview>

Resident students

## Sponsored Project Proposals and Awards 2009 - 2010 to 2020 - 2021\*

Fiscal Year	Proposals (P)		Awards (A)	
	N	Amount (\$)	N	Amount (\$)
2009 - 2010	365	53,717,963	254	39,754,021
2010 - 2011	353	56,922,612	250	42,018,391
2011 - 2012	227	42,435,603	185	38,326,824
2012 - 2013*	220	46,942,575	156	41,181,950
2013 - 2014	192	40,216,946	145	40,830,739
2014 - 2015	190	39,917,144	143	38,862,509
2015 - 2016	209	41,799,143	97	39,067,751
2016 - 2017	236	40,997,126	203	37,767,444
2017 - 2018	236	45,623,285	186	39,476,790
2018 - 2019	249	51,927,378	190	40,865,042
2019 - 2020	257	75,775,052	163	46,874,887
2020 - 2021	199	85,136,601	169	72,363,066

Highlights from the 2021 fiscal year:

125 new project applications in FY21.

\$13.0 million in sponsored funding was directed at outreach projects that impacted people, communities and environments throughout Iowa.

\$27.6 million in sponsored funding supported student services and strengthening academic support programming at UNI.

\$4.6 million in foundation supported research.

\$3.8 million in funding for research.

Source: Office of Research and Sponsored Programs and UNI Foundation

\*Starting 2012-2013 award, amount includes UNI Foundation awards.

*Intentionally blank*



# GENERAL INFORMATION



# GENERAL INFORMATION

## Library Statistics 2016 - 2021

	2016	2017	2018	2019	2020	2021
<b>PERSONNEL – FTE</b>						
Library Faculty	15	16	16	16	17	17
Library Associates	11	12	11	12	11	11
Library Staff	17	20	20	20	20	18
Student Employees (FTE)*	16	16	16	15	12	12
Student Employees (Headcount)*	72	85	79	81	78	67
<b>HOLDINGS/ACCESS</b>						
Books	783,450	786,247	759,520	851,097	849,096	848,811
Periodicals	165,643	163,953	97,435	160,237	158,847	156,488
Electronic Books	372,113	463,214	386,190	517,957	407,726	481,387
Electronic Journals	77,173	94,074	93,453	104,938	89,939	77,666
Maps (sheets and folded)	40,971	41,015	39,350	38,756	38,782	38,682
Maps (electronic)	2,895	2,904	3,256	3,600	3,583	4,066
<b>Government Documents (all)</b>						
Paper	157,311	155,325	74,943	72,681	72,809	73,094
Microform	300,635	300,632	59,139	71,893	71,812	70,982
CD/DVD/Floppy	481	481	387	386	379	357
<b>Subscriptions</b>						
Periodicals (paper - with newspapers)	484	693	532	408	412	409
Periodicals (electronic - with newspapers)	981	630	786	782	683	597
Databases	189	212	216	218	118	111
<b>Audiovisuals</b>						
Sound Recordings	20,120	20,289	15,235	15,496	14,758	14,960
Films and Videotapes	8,767	8,739	9,406	9,997	10,519	9,739
Other Nonprint Materials	3,283	3,201	5,058	4,166	4,251	4,334

Continued on next page

## Library Statistics 2016 - 2021

	2016	2017	2018	2019	2020	2021
<b>HOLDINGS/ACCESS (continued)</b>						
<b>Microform Units (not government documents)</b>						
Microfilm	30,293	30,316	28,661	28,723	30,295	28,802
Microfiche**	774,906	774,663	59,656	75,209	2,338	2,325
Microcards	17,076	17,076	4,598	4,598	4,598	4,598
Archives & Manuscripts (linear feet)	6,397	4,964	5,485	4,975	5,469	5,478
<b>SERVICES</b>						
Building Entrance Count	542,616	546,002	501,762	554,031	394,165	232,595
Circulation (first time loans)	67,381	55,091	73,802	76,816	49,258	23,108
Reference Transactions (all)	10,718	11,110	6,387	8,079	9,276	7,381
<b>Interlibrary Loan</b>						
Borrowed	4,042	3,020	3,212	3,124	2,878	2,321
Loaned	4,103	4,377	4,210	3,815	4,013	3,526
<b>Library Instruction</b>						
Classes	660	686	612	448	323	275
Persons Served	10,739	12,305	11,819	9,720	7,906	6,027
<b>Document Delivery</b>						
On Campus	3	68	***	***	***	***
Off Campus	2,461	1,069	1,024	1,035	1,253	1,153

Source: The Rod Library

\* Stats from Museum and IRTS have been added since 2014 and 2017 respectively.

\*\* Starting in 2020, statistic captured based on updated search capability.

\*\*\* Statistics captured with no distinction between on campus and off campus.

## International Students by Country Fall 2021

Country	N	Country	N	Country	N
Afghanistan	4	Ghana	3	Nigeria	3
Armenia	1	Greece	1	Oman	4
Australia	1	Hong Kong	13	Pakistan	13
Austria	3	India	11	Panama	1
Bahamas	1	Indonesia	1	Philippines	2
Bangladesh	4	Iran	2	Russia	2
Belgium	2	Israel	1	Saudi Arabia	18
Brazil	4	Italy	1	Serbia	1
Burkina Faso	1	Jamaica	1	Slovakia	2
Canada	4	Kazakhstan	1	South Korea	2
Chile	1	Kenya	4	Spain	2
China	67	Kosovo	4	Swaziland	1
Colombia	2	Kuwait	2	Sweden	1
Congo, The Democratic Republic	10	Latvia	1	Taiwan	2
Costa Rica	1	Lebanon	1	Trinidad and Tobago	2
Ethiopia	1	Malaysia	6	United Kingdom	4
France	6	Mexico	2	Venezuela	2
Georgia	1	Nepal	1	Viet Nam	1
Germany	1	New Zealand	2		
				<b>Total</b>	<b>236</b>
				<b>Number of Countries</b>	<b>56</b>

Includes undergraduates and graduates

## International Students by College 2016 - 2021

College	2016	2017	2018	2019	2020	2021	1 Yr % Change	5 Yr % Change
<b>TOTAL</b>	<b>548</b>	<b>547</b>	<b>480</b>	<b>385</b>	<b>350</b>	<b>236</b>		
Annual Percent Change	-11.0	-0.2	-12.2	-19.8	-9.1	-32.6	-32.6	-56.9
Business Administration	212	241	240	164	181	92	-49.2	-56.6
Education	67	61	54	40	22	19	-13.6	-71.6
Humanities, Arts and Sciences	177	152	107	100	91	59	-35.2	-66.7
Social and Behavioral Sciences	48	43	36	33	24	48	100.0	0.0
No Specific College	44	50	43	48	32	18	-43.8	-59.1

Includes undergraduates and graduates

## Top 5 Countries of Origin for International Students 2011 - 2021

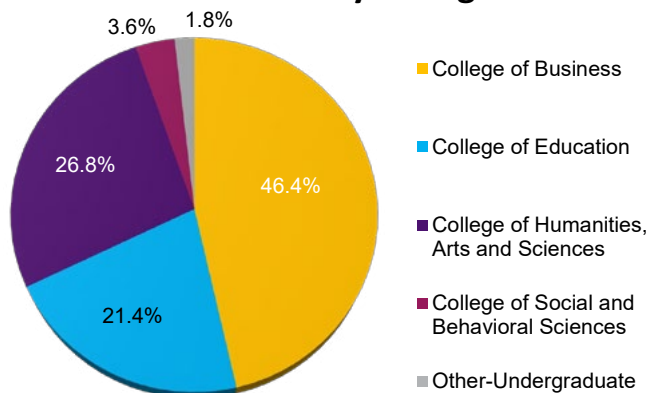
Fall	Country	N	Country	N	Country	N	Country	N	Country	N	Total International Students
<b>2011</b>	Saudi Arabia	180	China	89	Russia	24	India	21	Hong Kong	18	<b>488</b>
<b>2012</b>	Saudi Arabia	163	China	88	India	21	Russia	16	Hong Kong	15	<b>454</b>
<b>2013</b>	Saudi Arabia	183	China	127	Hong Kong	19	India	19	Japan	14	<b>520</b>
<b>2014</b>	Saudi Arabia	197	China	138	Brazil	63	India	22	Hong Kong Japan	16 16	<b>626</b>
<b>2015</b>	Saudi Arabia	211	China	144	Brazil	38	India	25	Malaysia	15	<b>616</b>
<b>2016</b>	Saudi Arabia	163	China	116	India	30	Hong Kong	21	Canada	18	<b>548</b>
<b>2017</b>	Saudi Arabia	135	China	135	India	30	Hong Kong	26	Pakistan	23	<b>547</b>
<b>2018</b>	China	176	Saudi Arabia	95	India	28	Pakistan	19	Japan	16	<b>480</b>
<b>2019</b>	China	140	Saudi Arabia	67	India	22	Oman	13	Canada	10	<b>385</b>
<b>2020</b>	China	154	Saudi Arabia	37	India	14	Hong Kong	12	Malaysia	10	<b>350</b>
<b>2021</b>	China	67	Saudi Arabia	18	Hong Kong	13	Pakistan	13	India	11	<b>236</b>

## Study Abroad Students by College & Classification Fall 2020/Spring 2021/Summer 2021\*

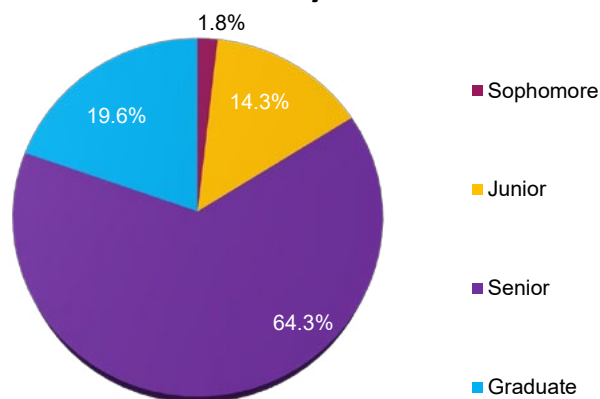
College	N
College of Business	26
College of Education	12
College of Humanities, Arts and Sciences	15
College of Social and Behavioral Sciences	2
Other-Undergraduate	1
<b>Total</b>	<b>56</b>

Classification	N
Freshman	0
Sophomore	1
Junior	8
Senior	36
Graduate	11
<b>Total</b>	<b>56</b>

### Students by College



### Students by Classification



Source: Study Abroad Center

Includes undergraduates and graduates

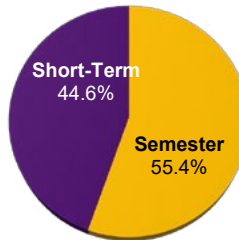
Does not consider Camp Adventure, International Student Teaching, Athletics, nor School of Music

\*Significant impact in academic year due to COVID-19.

## Study Abroad Students by Term Fall 2020/Spring 2021/Summer 2021\*

Type of Program	Academic Year	Fall 2019	Spring 2020	Summer 2020	Total
Semester	1	1	29		31
Short-Term	--	--		25	25
<b>Total</b>					<b>56</b>

Students by Type of Program



Source: Study Abroad Center

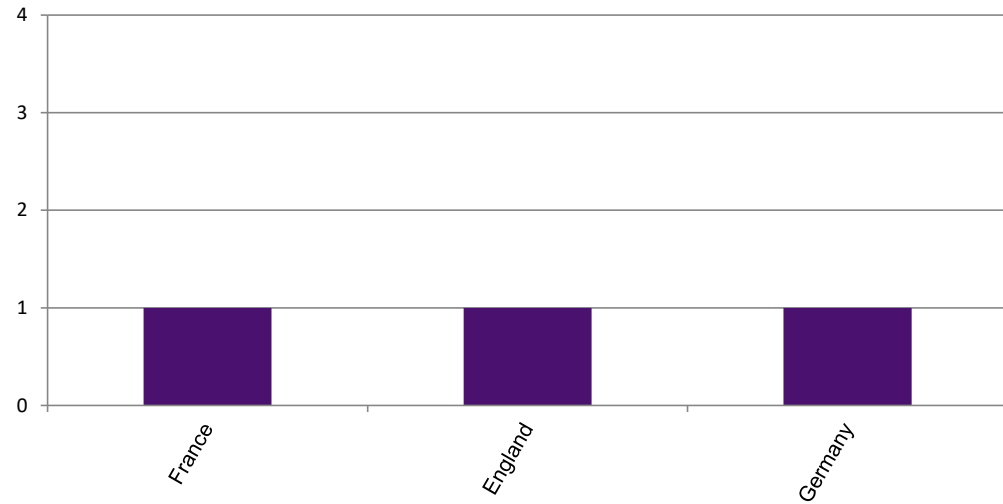
Includes undergraduates and graduates

Does not consider Camp Adventure, International Student Teaching, Athletics, nor School of Music

\*Significant impact in academic year due to COVID-19.

## Incoming International Exchange Students by Country Fall 2020/Spring 2021

Country	N
France	1
England	1
Germany	1



**Total** 3

**Number of Countries** 3

Source: *Study Abroad Center*

Includes undergraduates and graduates

Does not consider Camp Adventure, International Student Teaching, Athletics, nor School of Music

## Top 5 Countries for UNI Study Abroad Students AY 2010 - 2021

AY	Country	Top 1	Country	Top 2	Country	Top 3	Country	Top 4	Country	Top 5
2010-2011	Germany	302	Japan	145	Italy	119	England	112	Ireland	72
2011-2012	Germany	255	Japan	147	England	106	Italy	98	Ireland	63
2012-2013	Germany	235	Japan	140	England	131	Italy	98	France	75
2013-2014	England	155	Ireland	109	Italy	69	France	67	Greece	50
2014-2015	England	104	Ireland	77	Italy	58	Greece	40	France	32
2015-2016	Italy	71	Ireland	41	Spain	31	Greece	28	New Zealand	23
2016-2017	Italy	64	Ireland	44	Spain	39	Brazil	38	Greece	28
2017-2018	Italy	68	England	60	Spain	46	Greece	35	Ireland	26
2018-2019	Ireland	68	Spain	65	United Kingdom	52	Greece	50	Italy	49
2019-2020	Spain	25	Costa Rica	23	France	23	Greece	9	South Korea	7
2020-2021	Costa Rica	18	France	13	Nicaragua	13	Italy	11	Portugal	1

Source: *Study Abroad Center*

Includes undergraduates and graduates

For multiple destinations in one program, total count was included for all countries

Does not consider Camp Adventure, International Student Teaching, Athletics, nor School of Music

## UNI Services to Businesses, Communities and Local Government

Divisions	Location	Telephone	Website
Advance Iowa	Cedar Falls, IA	319-273-4322	<a href="https://advanceiowa.com">https://advanceiowa.com</a>
Business & Community Services	Cedar Falls, IA	319-273-6069	<a href="https://bcs.uni.edu">https://bcs.uni.edu</a>
Center for Business Growth and Innovation	Cedar Falls, IA	319-273-4344	<a href="https://cbgi.uni.edu">https://cbgi.uni.edu</a>
Center for Energy and Environmental Education	Cedar Falls, IA	319-273-2573	<a href="https://ceee.uni.edu">https://ceee.uni.edu</a>
Geoinformatics Training, Research, Education and Extension	Cedar Falls, IA	319-273-3877	<a href="https://www.geotree.uni.edu/en/">https://www.geotree.uni.edu/en/</a>
Heartland Economic Development Course	Cedar Falls, IA	319-273-6944	<a href="https://bcs.uni.edu/heartland">https://bcs.uni.edu/heartland</a>
Institute for Decision Making	Cedar Falls, IA	319-273-6941	<a href="https://idm.uni.edu">https://idm.uni.edu</a>
Iowa Waste Reduction Center	Cedar Falls, IA	319-273-8905	<a href="https://iwrc.uni.edu">https://iwrc.uni.edu</a>
John Pappajohn Entrepreneurial Center	Cedar Falls, IA	319-273-5732	<a href="https://jpec.uni.edu">https://jpec.uni.edu</a>
Materials Innovation Service	Cedar Falls, IA	319-273-3689	<a href="https://rrttc.com/materials-innovation-service">https://rrttc.com/materials-innovation-service</a>
Recycling and Reuse Technology Transfer	Cedar Falls, IA	319-273-3689	<a href="https://rrttc.com">https://rrttc.com</a>
Regional Entrepreneurship Project	Cedar Falls, IA	319-273-6944	<a href="https://bcs.uni.edu/eda">https://bcs.uni.edu/eda</a>
Small Business Development Center	Cedar Falls, IA	319-273-4328	<a href="https://cbgi.uni.edu/sbdc">https://cbgi.uni.edu/sbdc</a>
Strategic Marketing Services	Cedar Falls, IA	319-273-2886	<a href="https://sms.uni.edu">https://sms.uni.edu</a>
Tallgrass Prairie Center	Cedar Falls, IA	319-273-3836	<a href="https://tallgrassprairiecenter.org">https://tallgrassprairiecenter.org</a>
UNI Metal Casting Center	Cedar Falls, IA	319-273-6894	<a href="https://mcc.uni.edu">https://mcc.uni.edu</a>

Source: UNI Business and Community Services

## UNI Carnegie Classification

### Classification:

Basic

Size and Setting

Enrollment Profile

Undergraduate Profile

Undergraduate Instructional Program

Graduate Instructional Program

### Category:

M1: Master's Colleges & Universities: Larger Programs

Four-year, large, highly residential

Very high undergraduate

Four-year, full-time, selective, higher transfer-in

Professions plus arts & sciences, some graduate coexistence

Postbaccalaureate: Comprehensive programs

### This institution participated in the following elective classification:

Community Engagement

Level

Control

Enrollment (Fall 2021)

Curricular Engagement and Outreach and Partnerships

4-year or above

Public

9,231

Source: *The Carnegie Classification of Institutions of Higher Education - classification based on data from 2016 - 2017*

Notes:

Graduate program classification: based on fewer than 50 degrees.

Undergraduate program classification: percentage is within 5 points of a category border (arts & sciences direction).

Apparent inconsistencies between basic and instructional program classifications are due to degree thresholds used in the basic classification.

## Iowa Economic Impact Profile

Item	Details
Discretionary Spending and Tourism	9,231 current students
Provide Higher Ed	<p>Approximately 90% of students are from Iowa</p> <p>Credit courses were offered in 99 counties and 615 cities and towns</p> <p>40 off-campus degree and certification programs were offered</p> <p>53,448 enrollment in Continuing and Distance Education Credit courses.</p> <p>6,745 non-credit educational activities</p>
Business Services and Community Impact	<p>Total number community service hours engaged in by UNI students is <b>490,472 (2020-2021)</b></p> <p>UNI provided service in all 99 counties to nearly 3,505 unique business, community and local government clients; another 73,508 individuals were engaged in the MyEntre.Net/ IA SourceLink entrepreneurial support system. BCS has reached more than 302,000 Iowans through BCS programs and projects.</p> <p>Leveraged each \$1 invested by the state with \$5 in private grants, fees, and federal funding</p>

Source: Business & Community Services, Community Engagement, Continuing Education, and Office of the President



# PEER INSTITUTIONS

A photograph of a park scene. In the foreground, a large, light-colored concrete planter is filled with a mix of yellow, white, and purple flowers. The planter sits on a paved walkway. In the background, a dirt path leads through a green lawn towards a line of trees. To the right, a grey trash can is visible. The scene is brightly lit, suggesting a sunny day.

# PEER INSTITUTIONS

## Undergraduate Enrollment and Costs 2019 - 2020

Institution	Location	Student to		In State Tuition & Fees	Out of State Tuition & Fees
		UG	Faculty Ratio		
College of Charleston	Charleston, SC	9,600	14:1	\$25,062	\$45,392
Eastern Illinois University	Charleston, IL	6,229	14:1	\$22,019	\$24,299
Ferris State University	Big Rapids, MI	11,184	16:1	\$22,110	\$22,110
James Madison University	Harrisburg, VA	19,895	16:1	\$23,144	\$40,044
Marshall University	Huntington, WV	9,415	18:1	\$19,056	\$29,910
Southern Illinois University - Edwardsville	Edwardsville, IL	10,400	17:1	\$22,100	\$22,100
Truman State University	Kirksville, MO	4,939	15:1	\$17,132	\$24,326
University of Massachusetts - Dartmouth	North Dartmouth, MA	6,405	16:1	\$29,005	\$44,750
University of Minnesota - Duluth	Duluth, MN	9,847	17:1	\$22,054	\$27,254
University of Northern Iowa	Cedar Falls, IA	8,953	17:1	\$18,098	\$30,382
Western Washington University	Bellingham, WA	15,240	19:1	\$20,379	\$36,726

Source: *Integrated Postsecondary Education Data System (IPEDS)*

UG - Fall 2019 undergraduate enrollment

The cost refers to the total dollar amount of living on campus thus including room and board for 2019 - 2020.

## Faculty by Rank 2019 - 2020

Institution	Location	Professor	Associate Professor	Assistant Professor
College of Charleston	Charleston, SC	153	187	127
Eastern Illinois University	Charleston, IL	132	80	46
Ferris State University	Big Rapids, MI	161	144	99
James Madison University	Harrisburg, VA	359	290	256
Marshall University	Huntington, WV	245	208	306
Southern Illinois University - Edwardsville	Edwardsville, IL	172	182	126
Truman State University	Kirksville, MO	142	25	101
University of Massachusetts - Dartmouth	North Dartmouth, MA	124	100	73
University of Minnesota - Duluth	Duluth, MN	97	144	159
University of Northern Iowa	Cedar Falls, IA	130	161	105
Western Washington University	Bellingham, WA	215	168	159

Source: *Integrated Postsecondary Education Data System (IPEDS)*

2019 - 2020 Academic year full-time faculty on both 9/10 month and 11/12 month contract lengths

## Faculty Average Salaries by Rank 2019 - 2020

Institution	Location	Professor	Associate Professor	Assistant Professor	Instructor	All Ranks
College of Charleston	Charleston, SC	\$97,508	\$77,411	\$69,918	\$59,285	\$79,414
Eastern Illinois University	Charleston, IL	\$99,311	\$79,215	\$77,525	\$52,712	\$78,152
Ferris State University	Big Rapids, MI	\$115,639	\$89,140	\$80,386	\$65,371	\$87,115
James Madison University	Harrisburg, VA	\$104,799	\$83,474	\$76,646	\$62,775	\$85,803
Marshall University	Huntington, WV	\$89,531	\$75,994	\$71,371	\$43,325	\$74,952
Southern Illinois University - Edwardsville	Edwardsville, IL	\$98,113	\$87,552	\$78,963	\$45,590	\$79,525
Truman State University	Kirksville, MO	\$76,288	\$66,785	\$55,671	\$47,955	\$65,831
University of Massachusetts - Dartmouth	North Dartmouth, MA	\$133,436	\$106,276	\$87,133	-	\$102,737
University of Minnesota - Duluth	Duluth, MN	\$103,424	\$82,771	\$67,584	\$57,487	\$77,450
University of Northern Iowa	Cedar Falls, IA	\$91,423	\$75,706	\$68,152	\$55,079	\$74,579
Western Washington University	Bellingham, WA	\$120,748	\$95,063	\$76,809	\$58,025	\$92,203

Source: *Integrated Postsecondary Education Data System (IPEDS)*  
2019 - 2020 Academic year full-time faculty

## Undergraduates Receiving Student Financial Aid 2019- 2020

Institution	Location	Federal Grants**		State/Local Grants		Institutional Grants		Loans		Receiving any Financial Aid
		N	\$	N	\$	N	\$	N	\$	%
College of Charleston	Charleston, SC	492	\$4,814	1,015	\$5,257	850	\$6,236	877	\$7,863	82%
Eastern Illinois University	Charleston, IL	366	\$4,788	350	\$4,167	488	\$5,433	455	\$6,087	92%
Ferris State University	Big Rapids, MI	839	\$5,130	502	\$8,109	1,418	\$5,199	1,212	\$7,487	97%
James Madison University	Harrisburg, VA	694	\$4,377	606	\$5,820	760	\$6,821	1,996	\$8,401	63%
Marshall University	Huntington, WV	895	\$5,333	1,142	\$4,658	1,434	\$4,640	1,040	\$5,892	96%
Southern Illinois University - Edwardsville	Edwardsville, IL	717	\$5,382	538	\$4,537	1,478	\$5,121	988	\$5,916	94%
Truman State University	Kirksville, MO	346	\$4,473	801	\$2,881	1,309	\$6,011	615	\$6,192	100%
University of Massachusetts - Dartmouth	North Dartmouth, MA	593	\$4,816	812	\$2,129	1,015	\$5,201	1,029	\$7,046	93%
University of Minnesota - Duluth	Duluth, MN	539	\$4,814	854	\$4,946	1,663	\$2,968	1,456	\$8,970	90%
University of Northern Iowa	Cedar Falls, IA	504	\$4,527	22	\$4,153	1,170	\$2,875	1,052	\$6,005	81%
Western Washington University	Bellingham, WA	763	\$4,617	543	\$6,453	2,135	\$3,524	1,342	\$6,174	86%

Source: *Integrated Postsecondary Education Data System (IPEDS)*

Full-time, first-time, degree/certificate-seeking undergraduate students receiving financial aid

\$ = Average amount of aid received

## Retention and Graduation Rates Fall 2019 and 2020

Institution	Location	Retention * %	Graduation Rates** %
College of Charleston	Charleston, SC	81	66
Eastern Illinois University	Charleston, IL	73	53
Ferris State University	Big Rapids, MI	76	53
James Madison University	Harrisburg, VA	89	84
Marshall University	Huntington, WV	73	49
Southern Illinois University - Edwardsville	Edwardsville, IL	79	49
Truman State University	Kirksville, MO	84	75
University of Massachusetts - Dartmouth	North Dartmouth, MA	70	59
University of Minnesota - Duluth	Duluth, MN	80	62
University of Northern Iowa	Cedar Falls, IA	83	67
Western Washington University	Bellingham, WA	82	68

Source: *Integrated Postsecondary Education Data System (IPEDS)*

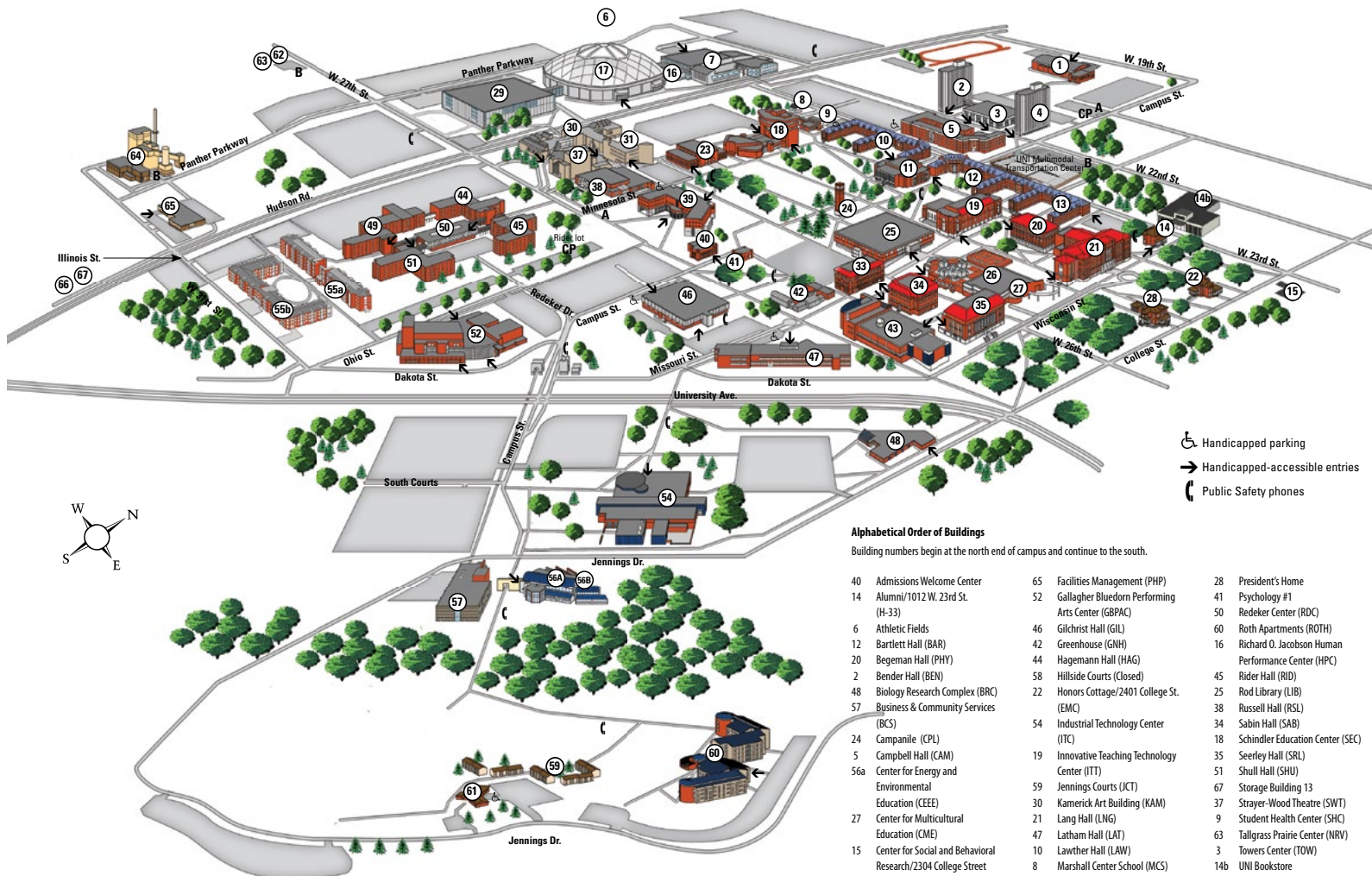
\*Full-time retention rate 2019-20 academic year

\*Graduation rates within 150% of normal time Fall 2019

## Degrees Granted in Academic Year 2019 - 2020

Institution	Location	Baccalaureate			Total
		(Bachelor's)	Master's	Doctorates	
College of Charleston	Charleston, SC	2,245	210	0	2,455
Eastern Illinois University	Charleston, IL	1,226	530	0	1,756
Ferris State University	Big Rapids, MI	2,493	168	214	2,875
James Madison University	Harrisburg, VA	4,495	716	37	5,248
Marshall University	Huntington, WV	1,662	868	232	2,762
Southern Illinois University - Edwardsville	Edwardsville, IL	2,558	605	209	3,372
Truman State University	Kirksville, MO	1,135	167	0	1,302
University of Massachusetts - Dartmouth	North Dartmouth, MA	1,430	397	83	1,910
University of Minnesota - Duluth	Duluth, MN	2,026	230	0	2,256
University of Northern Iowa	Cedar Falls, IA	2,178	542	19	2,739
Western Washington University	Bellingham, WA	3,629	255	0	3,884

Source: *Integrated Postsecondary Education Data System (IPEDS)*



- Handicapped parking
- Handicapped-accessible entries
- Public Safety phones

#### Alphabetical Order of Buildings

Building numbers begin at the north end of campus and continue to the south.

40	Admissions Welcome Center	65	Facilities Management (PHP)	28	President's Home
14	Alumni/1012 W. 23rd St.	52	Gallagher Bluebird Performing Arts Center (GBPAC)	41	Psychology #1
6	Athletic Fields	46	Gilchrist Hall (GIL)	50	Redeker Center (RDC)
12	Bartlett Hall (BAR)	42	Greenhouse (GNH)	60	Roth Apartments (ROTH)
20	Begeman Hall (PHY)	44	Hagemann Hall (HAG)	16	Richard O. Jacobson Human Performance Center (HPC)
2	Bender Hall (BEN)	58	Hillside Courts (Closed)	45	Rider Hall (RID)
48	Biology Research Complex (BRC)	22	Honors Cottage/2401 College St.	25	Rod Library (LIB)
57	Business & Community Services (BCS)		(EMC)	38	Russell Hall (RSL)
24	Campbell Hall (CAM)	54	Industrial Technology Center (ITC)	34	Sabin Hall (SAB)
56a	Center for Energy and Environmental Education (CEE)	19	Innovative Teaching Technology Center (ITT)	18	Schindler Education Center (SEC)
27	Center for Multicultural Education (CME)	59	Jennings Courts (JCT)	51	Shull Hall (SHU)
15	Center for Social and Behavioral Research/2304 College Street	30	Kamerick Art Building (KAM)	67	Storage Building 13
11	Commons (COM)	21	Lang Hall (LNG)	37	Strayer-Wood Theatre (SWT)
31	Communication Arts Center (CAC)	47	Latham Hall (LAT)	9	Student Health Center (SHC)
56b	Continuing Education	10	Lawther Hall (LAW)	63	Tallgrass Prairie Center (NRV)
39	Curtis Business Building (CBB)	8	Marshall Center School (MCS)	3	Towers Center (TOW)
13	East Bartlett (SSC)	43	McCollum Science Hall (MSH)	14b	UNI Bookstore
66	Environmental Health and Safety Building	29	McLeod Center (MCL)	17	UNI-Dome (DOM)
		26	Maucker Union (MAU)	61	University Apartments Office (UAP)
		1	Nielsen Fieldhouse	62	Warehouse 1 (WH1)
		49	Noehren Hall (NRN)	7	Wellness/Recreation Center (WRC)
		55a	Panther Village 1000	23	West Gymnasium (WST)
		55b	Panther Village 3000	33	Wright Hall (WRT)
		64	Power Plant (PPL)		



## **Institutional Effectiveness & Planning**

University of Northern Iowa

Cedar Falls, Iowa 50614-0005

*The University of Northern Iowa does not discriminate in employment or education. Visit [uni.edu/policies/1303](http://uni.edu/policies/1303) for additional information.*

