

# 2010

## Summer School Survey Report



Nangai Yang, Kristin Moser, Shashi Kaparthy

University of Northern Iowa

6/2010

## UNI Summer School Survey 2010

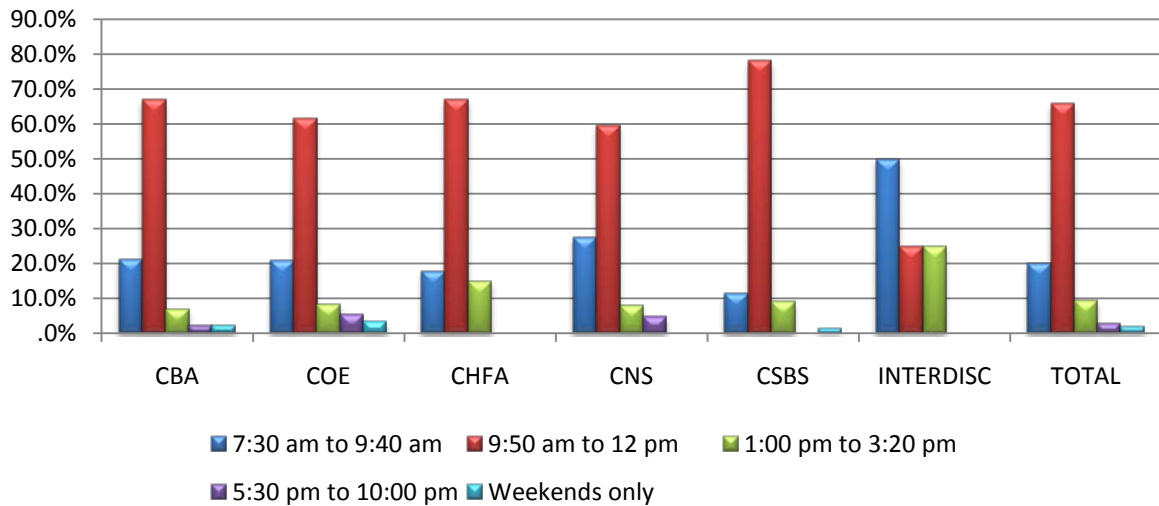
This report is a summary of the University of Northern Iowa (UNI) Summer School Survey given to students participating in advance registration for summer school on March 10-12, 2010. The questions on the Summer School Survey were designed to help gain a better understanding of the patterns of usage of summer school courses and students' preferences for scheduling.

All students participating in electronic registration for summer 2010 were presented with two paired questions randomly selected from a list of ten items prior to advancing to the registration screen during the summer registration process. The survey was completed by 2233 students. Respondents were asked to

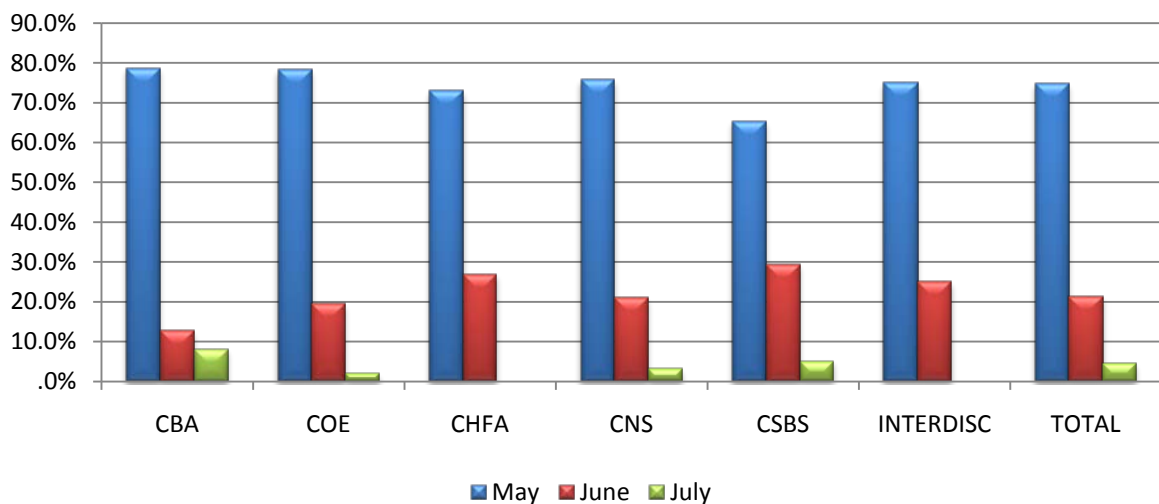
answer questions regarding their preferences for summer school sessions at UNI. They were asked to indicate the extent to which they agreed or disagreed to most of the survey statements on a Likert scale ranging from 1 (strongly disagree) to 5 (strongly agree). Some of the items required the student to indicate a "yes" or "no" response, while others required a specific date or time selection. Table 1 presents demographic information for student respondents to the UNI Summer School Survey. The data is then shown by college to illustrate any differences in responding. Finally, trends in responding over six years are presented for examination.

## Section 1: Summary of Findings

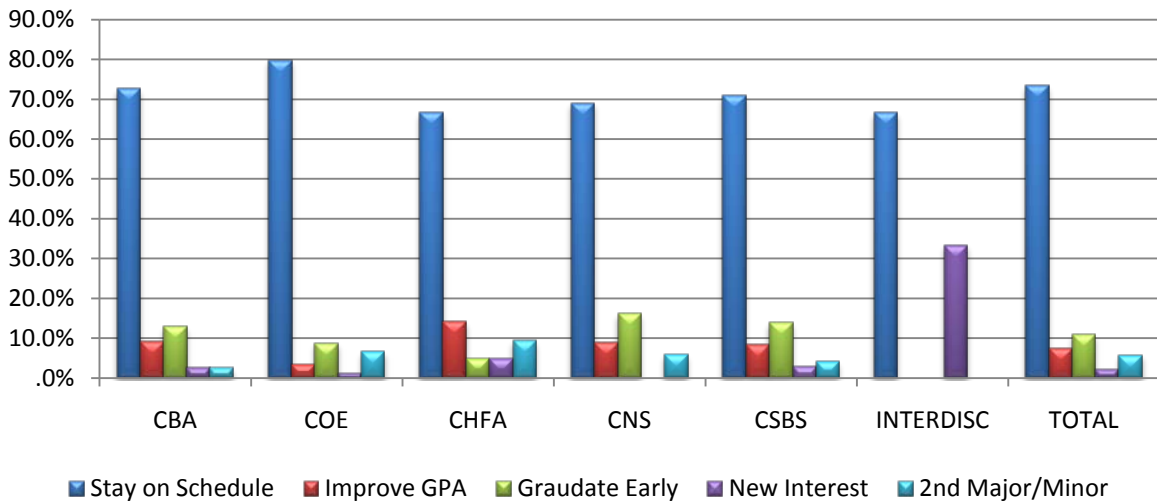
### Q1: I prefer summer school courses offered (time of day):



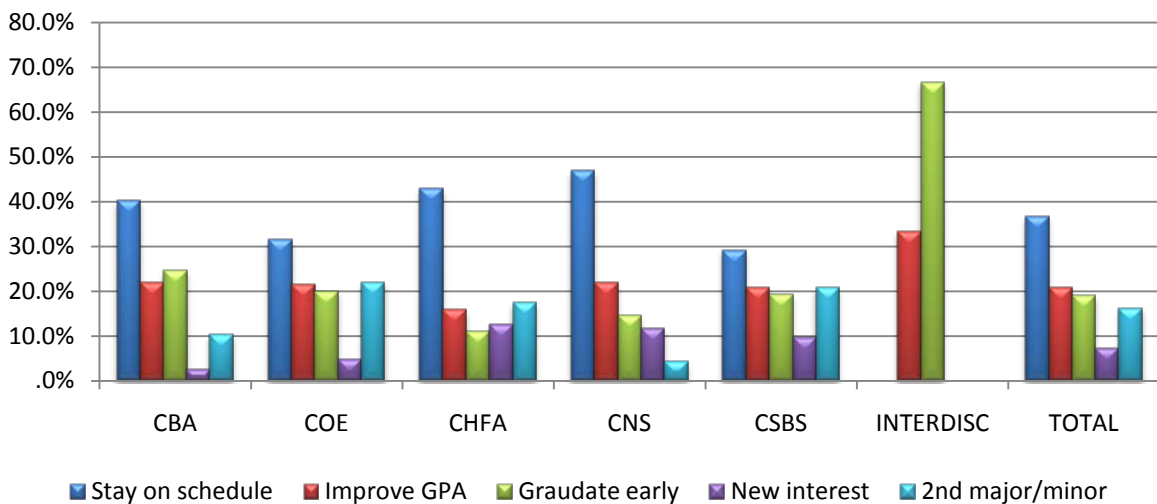
### Q2: I prefer summer school courses offered during (month):



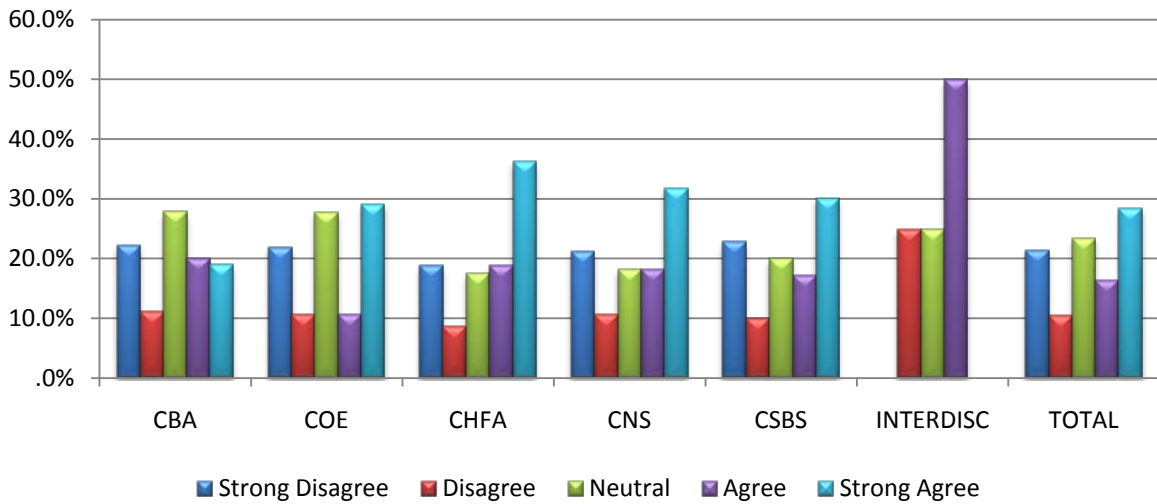
### Q3: My primary reason for enrolling in summer school is to:



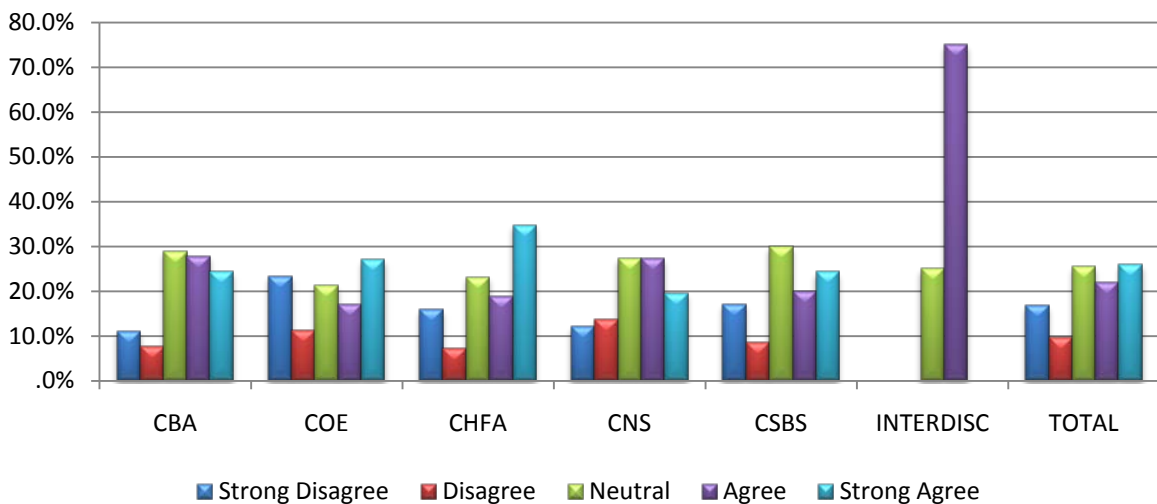
### Q4: My secondary reason for enrolling in summer school is to:



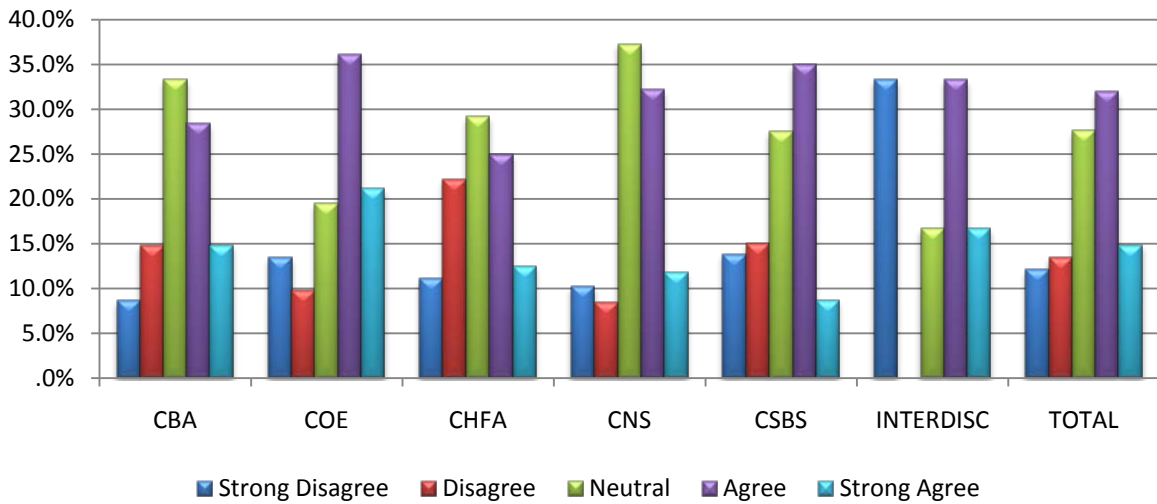
### Q5: Financial aid is a very important part of my decision to enroll in summer school.



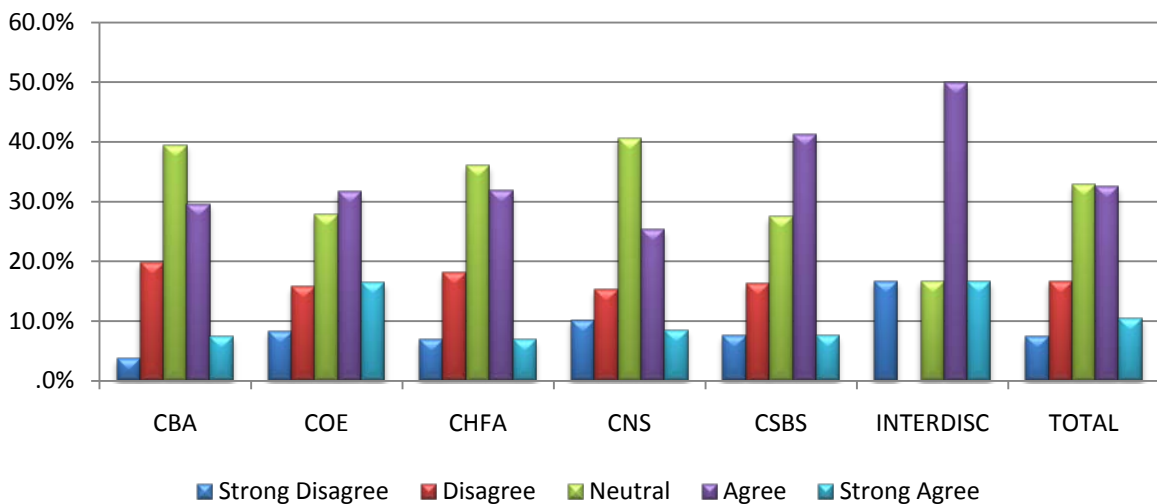
### Q6: Local employment is a very important part of my decision to enroll in summer school.



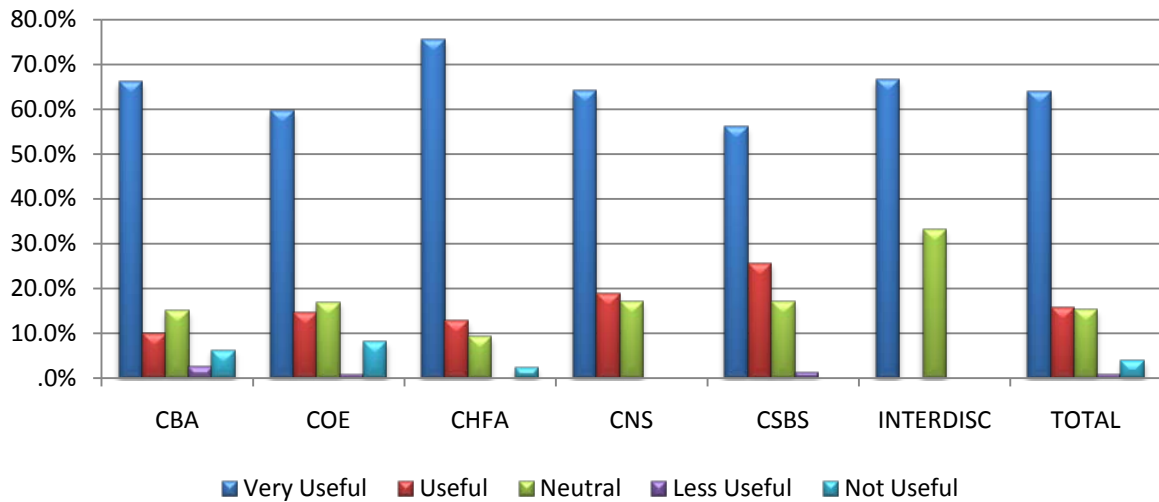
### Q7: The courses available in summer school this year meet my needs.



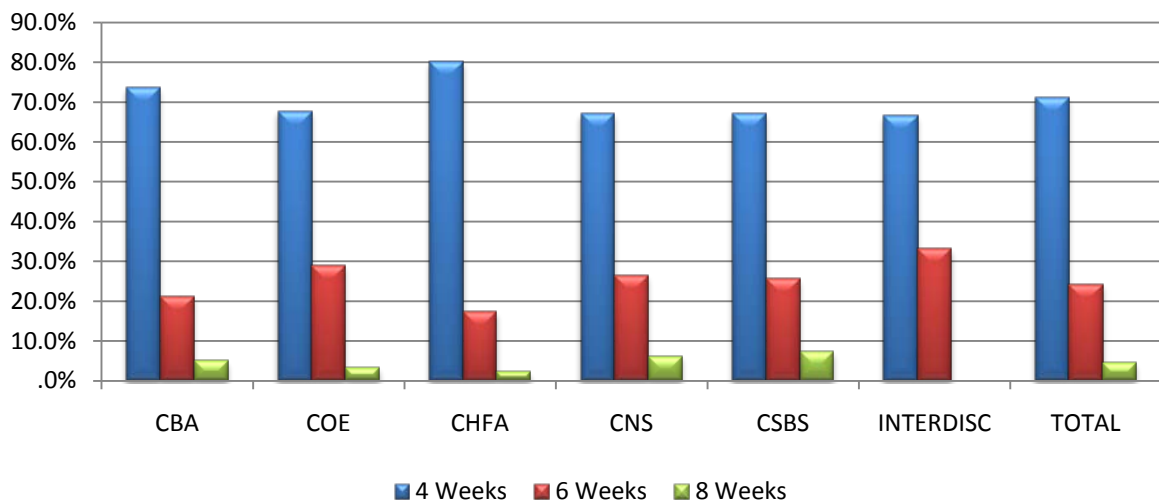
### Q8: The time at which courses are offered this summer meets my needs.



**Q9: Now a May session is offered, how useful is this session for you?**

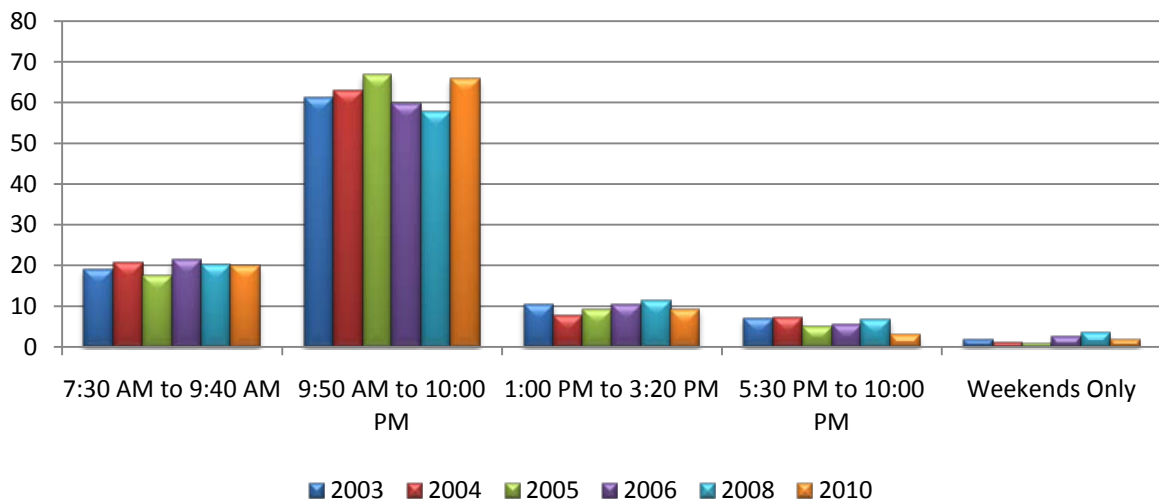


**Q10: I prefer summer school courses offered during (length of time):**

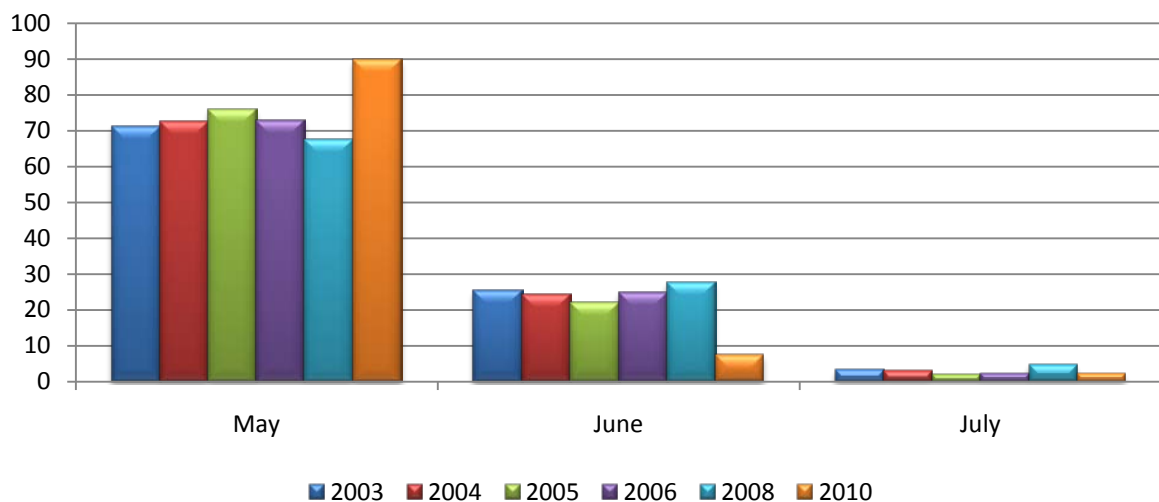


## Section 2: Multiple Year Comparison of Summer School Data: 2003-2010

**Q1: I prefer summer school courses offered  
(time of day)**

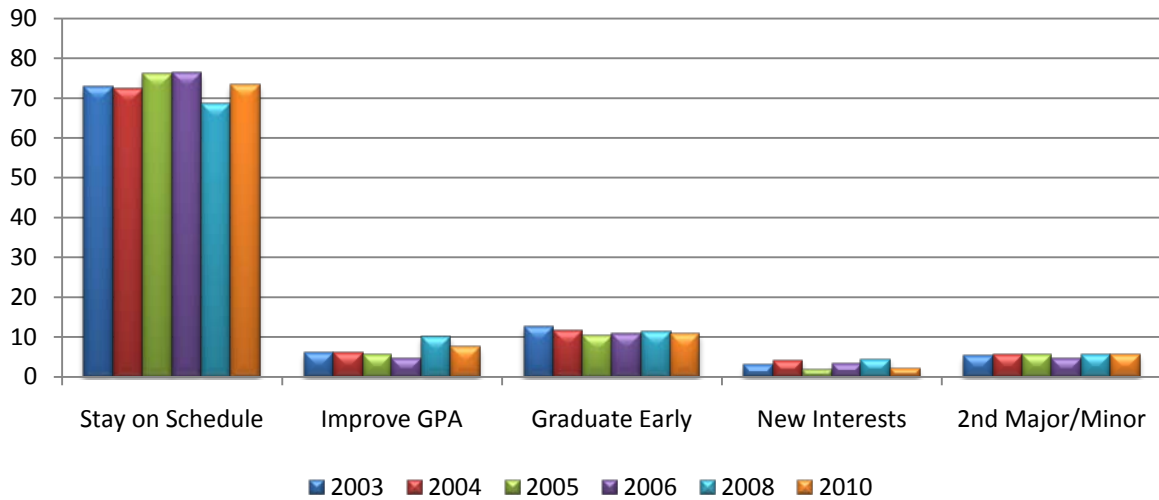


**Q2: I prefer summer school courses offered  
during (month)**

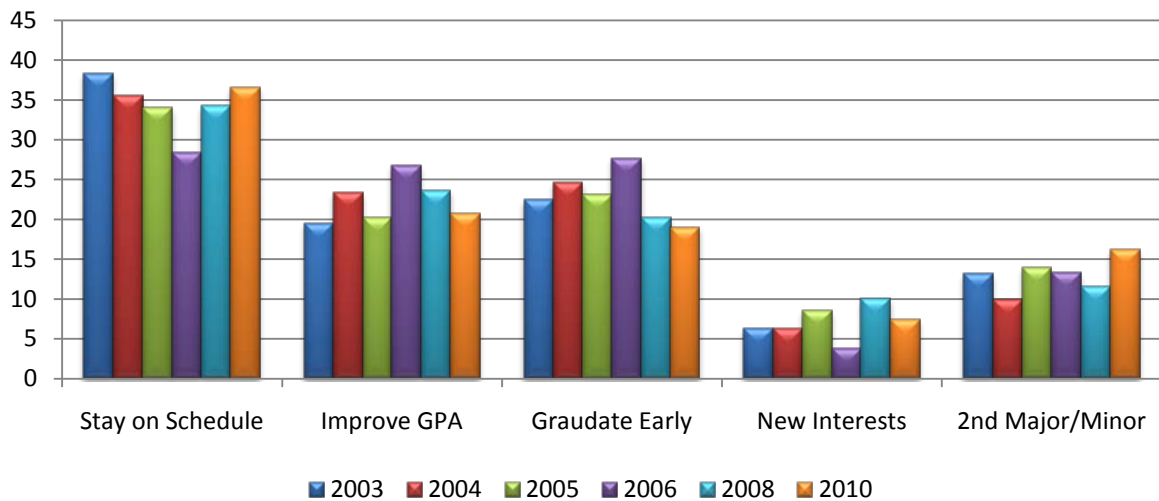




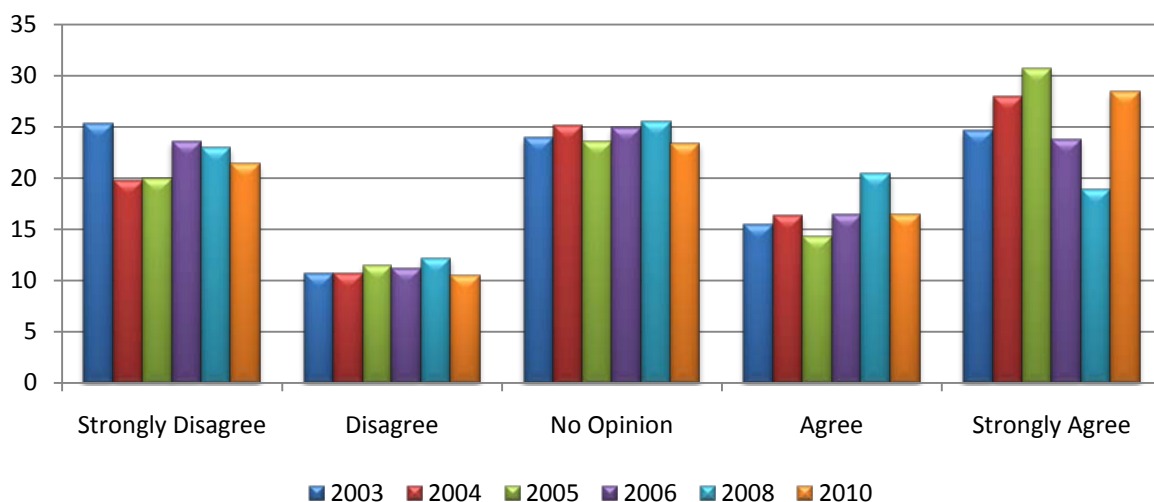
### Q3: My primary reason for enrolling in summer school is to:



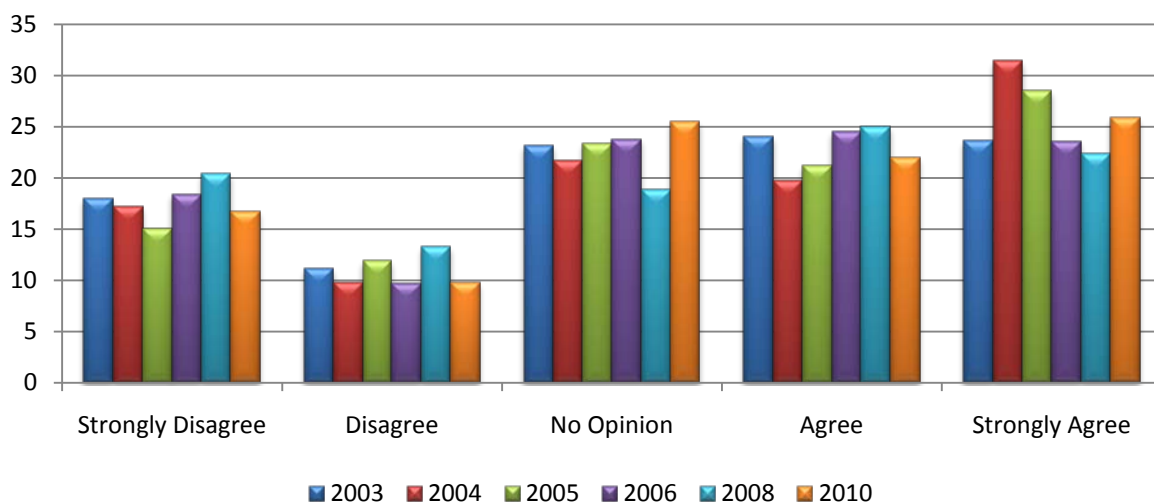
### Q4: My secondary reason for enrolling in summer school is to:



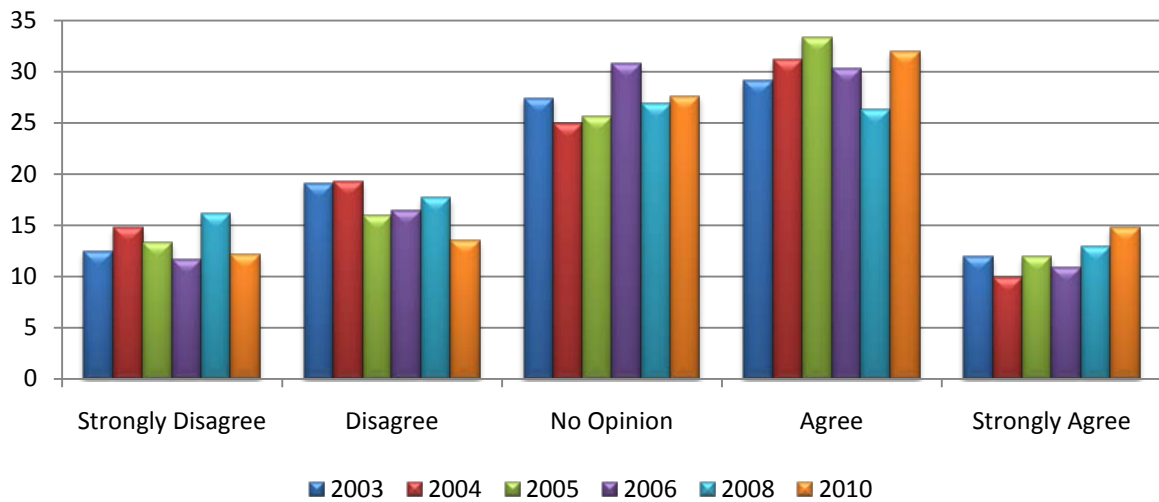
**Q5: Financial aid is a very important part of my decision to enroll in summer school.**



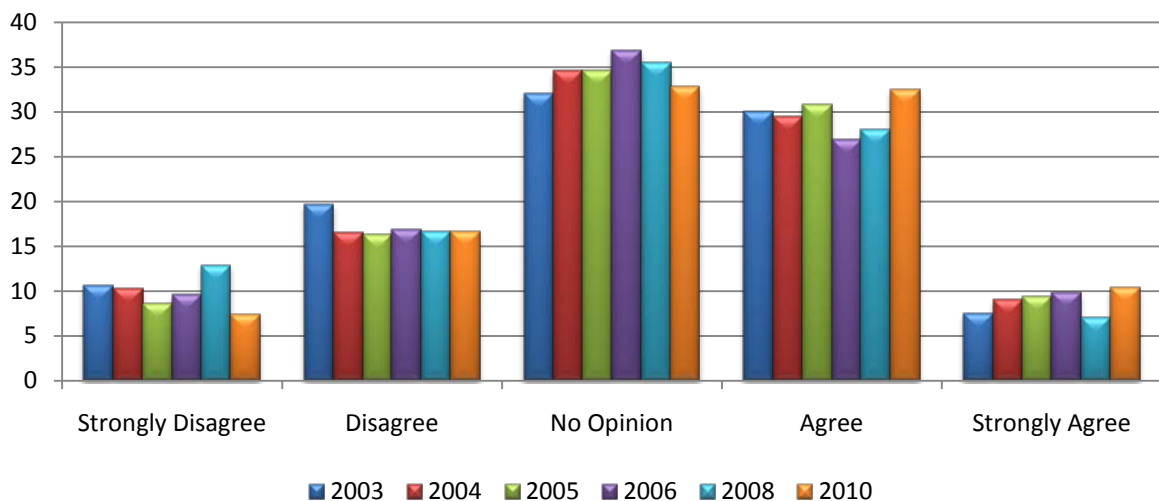
**Q6: Local employment is a very important part of my decision to enroll in summer school.**



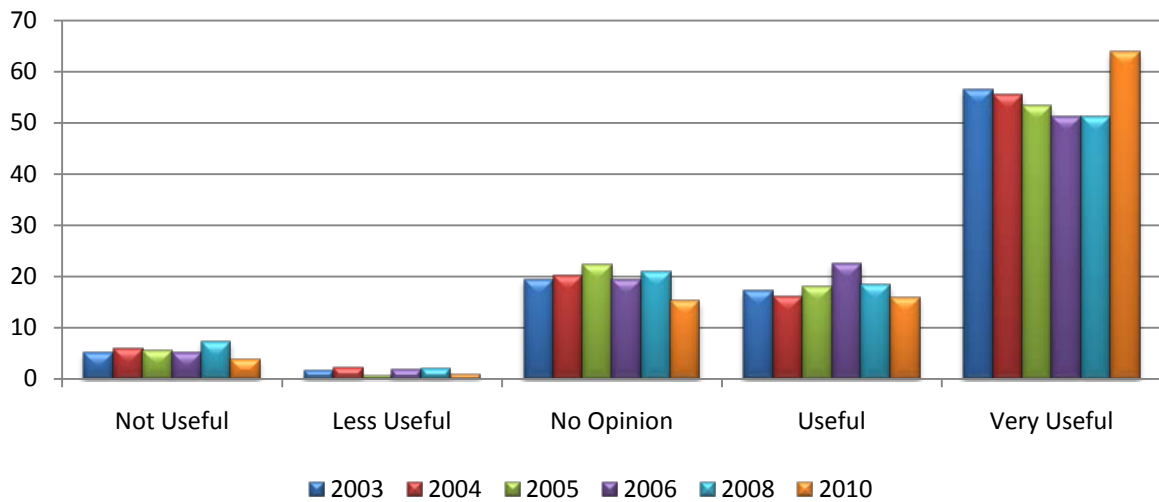
### Q7: The courses available in summer school this year meet my needs.



### Q8: The time at which courses are offered this summer meets my needs.



**Q9: Now that a May session is offered, how useful this session is?**



**Q10: I prefer summer school courses offered during (length of session):**

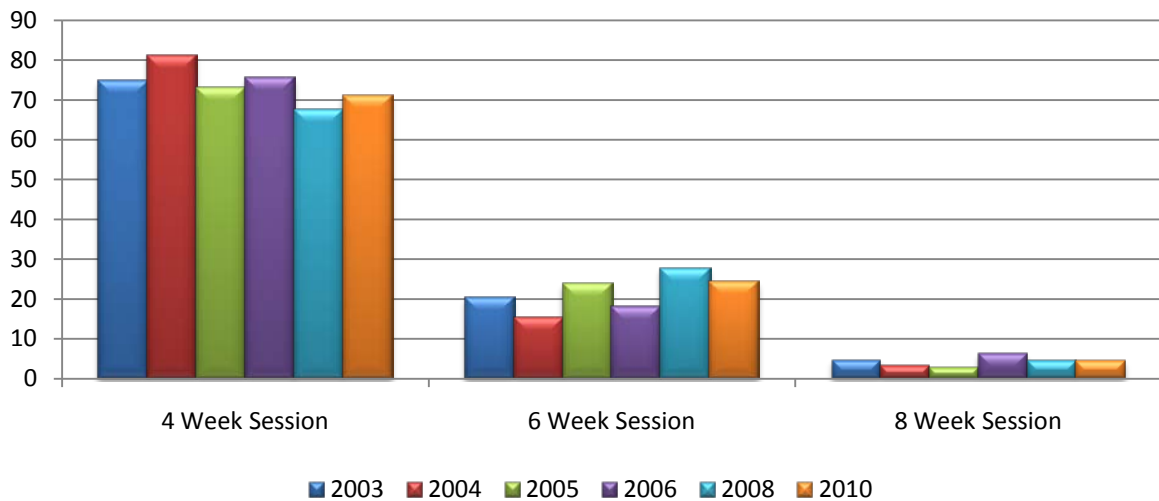


Table 1. Demographic Characteristics by College

	Business Administration		Education		Humanities and Fine Arts		Natural Sciences		Social and Behavioral Sciences		Interdisciplinary		Total	
	N	%	N	%	N	%	N	%	N	%	N	%	N	%
<b>Sex</b>														
Male	458	55.40%	320	23.2%	164	23.0%	318	49.8%	244	31.9%	8	20.0%	1512	34.7%
Female	368	44.60%	1060	76.8%	550	77.0%	320	50.2%	520	68.1%	32	80.0%	2850	65.3%
Total	826	100.0%	1380	100.0%	714	100.0%	638	100.0%	764	100.0%	40	100.0%	4362	100.0%
<b>Age</b>														
19 or under	112	13.56%	188	13.62%	56	7.84%	120	18.81%	82	10.73%	20	50.00%	578	13.25%
20-23	574	69.49%	836	60.58%	526	73.67%	384	60.19%	530	69.37%	16	40.00%	2866	65.70%
24-29	112	13.56%	218	15.80%	96	13.45%	76	11.91%	88	11.52%			590	13.53%
30-39	24	2.91%	94	6.81%	30	4.20%	42	6.58%	46	6.02%	4	10.00%	240	5.50%
40-55	2	0.24%	40	2.90%	6	0.84%	16	2.51%	16	2.09%			80	1.83%
Over 55	2	0.24%	4	0.29%					2	0.26%			8	0.18%
Total	826	100.00%	1380	100.00%	714	100.00%	638	100.00%	764	100.00%	40	100.00%	4362	100.00%
<b>Race</b>														
White	724	87.70%	1282	92.9%	658	92.2%	586	91.8%	676	88.5%	38	95.0%	3964	90.9%
African American/Black	14	1.70%	42	3.0%	12	1.7%	10	1.6%	40	5.2%	0	.0%	118	2.7%
American Indian /Alaskan Native	0	.0%	0	.0%	0	.0%	0	.0%	0	.0%	0	.0%	0	.0%
Asian	12	1.50%	10	.7%	8	1.1%	12	1.9%	10	1.3%	0	.0%	52	1.2%
Hispanic	10	1.20%	28	2.0%	20	2.8%	4	.6%	26	3.4%	0	.0%	88	2.0%
Non-resident Alien	60	7.30%	6	.4%	4	.6%	22	3.4%	4	.5%	2	5.0%	98	2.2%
Native Hawaiian / Pacific Islander	0	0%	0	.0%	0	.0%	0	.0%	2	.3%	0	.0%	2	.0%
Two or More	2	0.20%	4	.3%	6	.8%	4	.6%	4	.5%	0	.0%	20	.5%
No Response	4	0.50%	8	.6%	6	.8%	0	.0%	2	.3%	0	.0%	20	.5%
Total	826	100%	1380	100.0%	714	100.0%	638	100.0%	764	100.0%	40	100.0%	4362	100.0%
<b>Classification</b>														
Unclassified	0	.0%	0	.0%	0	.0%	0	.0%	0	.0%	2	5.0%	2	.0%
Freshman	26	3.1%	62	4.5%	0	.0%	52	8.2%	14	1.8%	14	35.0%	168	3.9%
Sophomore	138	16.7%	188	13.6%	80	11.2%	110	17.2%	128	16.8%	16	40.0%	660	15.1%
Junior	318	38.5%	442	32.0%	248	34.7%	250	39.2%	308	40.3%	8	20.0%	1574	36.1%
Senior	332	40.2%	406	29.4%	280	39.2%	202	31.7%	264	34.6%	0	.0%	1484	34.0%
Graduate	12	1.50%	282	20.50%	106	14.80%	24	3.80%	50	6.50%	0	0%	474	10.90%
Total	826	100.00%	1380	100%	714	100%	638	100%	764	100%	40	100%	4362	100%
<b>Residence Status</b>														
Resident	740	89.6%	1312	95.1%	674	94.4%	588	92.2%	726	95.3%	38	95.0%	4078	93.5%
Non-resident Alien	86	10.4%	68	4.9%	40	5.6%	50	7.8%	36	4.7%	2	5.0%	282	6.5%
Total	826	100.0%	1380	100.0%	714	100.0%	638	100.0%	762	100.0%	40	100.0%	4360	100.0%