



2012-2013 FACT BOOK

CIO's Office and Office of Institutional Research

The University of Northern Iowa provides transformative learning experiences that inspire students to embrace challenge, engage in critical inquiry and creative thought, and contribute to society.

Quick Reference

University President...	Benjamin J. Allen	Number of Financial Aid Awards	40,698
Board of Regents President	Craig A. Lang	Fall 2012 Employees	
University Accreditation	North Central Association of Colleges and Schools (NCA)	Full-Time	
Number of Colleges	4	Faculty and Institutional Officers	613
Number of Academic Departments	32	Professional and Scientific	546
Enrollment 2012 (Fall Headcount)		General Service Staff	510
Undergraduate	10,655	Part-Time	
Graduate	1,618	Faculty and Institutional Officers	38
Total	12,273	Professional and Scientific	46
		General Service Staff	48
Enrollment 2011 (Fall FTE)		Total	1,801
Undergraduate	9,630	2012 Current Funds Revenues	\$315,984,009
Graduate	1,243	2011-12 Sponsored Funding Awarded	\$38,326,824
Total	10,873	Academic Year 2012-13 Tuition and Fees	
2011-12 Degrees Awarded		Undergraduate Resident	\$7,635.00
Baccalaureate (Bachelor's)	2,440	Graduate Resident	\$8,743.00
Master's	572	Undergraduate Nonresident	\$16,721.00
Specialist	10	Graduate Nonresident	\$18,013.00
Doctorate	12	Academic year 2012-13 Room & Board (19 meals/wk)	\$7,597
Total	3,034	Electronic Journals available in Library	50,909
Total Living Alumni	106,842	Location	Cedar Falls, IA
Student Financial Aid	\$127,078,624	Homepage Address	http://www.uni.edu
Residence Hall Occupancy	4,123	Office of Enrollment Services Phone Number.....	800-772-2037
		For an electronic version of the fact book, visit our Web site at http://www.ir.uni.edu/dbWeb/	

University of Northern Iowa



FACT BOOK 2012-2013

CIO's Office and Office of Institutional Research

**University of Northern Iowa
Cedar Falls, IA 50614-0005**

Table of Contents

Quick Reference.....	Inside front cover
Mission Statement.....	1
UNI Organizational Chart.....	2
UNI Administration.....	3
Definitions of Terms Used.....	4
Calendar.....	6

New Students

Fall 2012 New Students.....	7
New Student Applications, Admissions, and Enrolled 2001-2012.....	8
New Students Enrolled by Residence 2001-2012.....	9
New Freshmen Enrollment by Residence 2006-2012.....	10
New Undergraduate Transfer Students by Type of Transfer College.....	11
New Freshmen ACT Composite Scores and High School Class Rank.....	12

Enrollment

Fall 2012 Students Profile by College.....	13
Headcount Enrollment 2001-2012.....	14
Headcount Enrollment by Level.....	15
Undergraduate Enrollment by Age.....	16
Undergraduate Headcount by College: Fall 2008-2012.....	17
Fall 2012 Enrollment by Residence.....	18
Enrollment by Residence 2001-2012.....	19
Fall 2012 Enrollment by Race/Ethnicity.....	20
Minority Student Enrollment 2001-2012.....	21

Enrollment (continued)

Fall On-Campus Headcount & FTE Enrollment by Level 2001-2012.....	22
First Major Only by College and Level: Fall 2007-2012.....	23
Annual Degrees Awarded by Level 2002-2012.....	24
Degrees Granted by College 2010-11 and 2011-2012.....	25
Undergraduate Retention and Graduation Rates.....	26
Continuing Education Credit Enrollment Trends 2002-2012.....	27
Continuing Education Courses Offered 2001-2012.....	28
Web-based Learning Management System (LMS) 2007-2012.....	29
Fall Semester Residence Hall Occupancy by Gender and Level 2001-2012.....	30

Alumni

Total Living Alumni by College 2008-2012.....	31
Total Living Alumni by College.....	32
Alumni by State 2012.....	33
Alumni by Iowa County 2012.....	34
Post-Graduation Status of 2010-2012 Bachelors Degree Recipients.....	35
Post-Graduation Status of 2010-2012 Graduate Degree Recipients.....	36
Undergraduate Plans for Further Education 2011-2012.....	37
Graduate Plans for Further Education 2011-2012.....	38

Table of Contents (continued)

Faculty and Staff

Fall 2012 Faculty Profile by College.....	39
Faculty by College 2007-2012.....	40
Faculty by College and Gender 2007-2012.....	41
Faculty by Tenure Status 2001-2012.....	42
Faculty Tenure Status by Gender 2001-2012.....	43
Fall 2012 Faculty by Tenure Status and Minority.....	44
Faculty by Rank and Tenure Status 2001-2012.....	45
Faculty by College and Tenure Status 2007-2012.....	46
Faculty by College, Gender and Tenure Status 2008-2012.....	47
Faculty by College and Rank 2007-2012.....	49
Faculty by College, Gender and Rank 2008-2012.....	50
Minority Faculty by Race/Ethnicity 2003-2012.....	52
UNI Workforce by Employment Categories 2002-2012.....	53
UNI Workforce Headcount & FTE by Employment Categories & College 2008-2012.....	54
UNI Workforce by Race/Ethnicity 2006-2012.....	56
UNI Workforce by Employment Categories and Race/Ethnicity Fall 2012.....	57
Fall 2012 UNI Workforce Headcount & FTE by Employment Categories & College.....	58
UNI Workforce by Employment Categories, Gender and College Fall 2012.....	59
UNI Workforce by Employment Categories, Level and College Fall 2012.....	60
UNI Workforce by Employment Categories, Level and Gender Fall 2012.....	61

Budget and Finance

Statement of Revenues, Expenses, and Changes In Net Assets 2007-2012.....	63
Financial Aid Programs by Source of Aid 2005-2012.....	65
Student Financial Aid Programs 2009-2012.....	66
Full-Time Undergraduate Student Tuition and Fees 1993-2012.....	67
Full-Time Graduate Student Tuition and Fees 1993-2012.....	68
Sponsored Project Proposals and Awards 2000-2012.....	69

Library

Library Statistics: 2007-2012.....	71
------------------------------------	----

General Information

International Students by Country: Fall 2012.....	73
International Students by College 2006-2012.....	74
Top 5 Countries of Origin for International Students 2001-2012.....	75
Study Abroad Host Country or Destination: Fall 11/Spring 12/Summer 12.....	76
UNI Services to Businesses, Communities and Local Government.....	77
UNI Carnegie Classification.....	78
Iowa Economic Impact Profile.....	79

Peer Institutions

Undergraduate Enrollment and Costs 2011-2012.....	81
Faculty by Rank 2011-2012.....	82
Faculty Average Salaries by Rank 2011-2012.....	83
Undergraduates Receiving Student Financial Aid: 2010-2011.....	84
Retention and Graduation Rates Fall 2011.....	85
Degrees Granted in Academic Year 2011-2012.....	86

Campus Map.....	Inside back cover
-----------------	-------------------



FACT BOOK

2012-2013

CIO's Office and Office of Institutional Research

Student Contributor:
Tim Starr

Graphic and Publication Support:
Office of University Relations

Phone. 319-273-3050

Fax: 319-273-3010

**Email: instrsch@uni.edu
ciosoffice@uni.edu**

Institutional Mission

The University of Northern Iowa provides transformative learning experiences that inspire students to embrace challenge, engage in critical inquiry and creative thought and contribute to society.

Vision Statement

The University of Northern Iowa will be nationally known for innovative education, preparing students for success in a rapidly changing, globally competitive, and culturally diverse world.

Values

As a university community we are guided by the following core values:

Academic Freedom – freedom of inquiry by students, faculty, and staff

Access– an affordable, inclusive educational environment

Values (Continued)

Accountability – integrity, responsibility and the highest ethical standards of students, faculty and staff

Community– an ethical, caring, and safe community characterized by civility

Diversity – a welcoming community that celebrates pluralism, multiculturalism, and the unique contributions of each person and group

Engagement – characterized by challenge, transformation, and lifelong learning in a global society

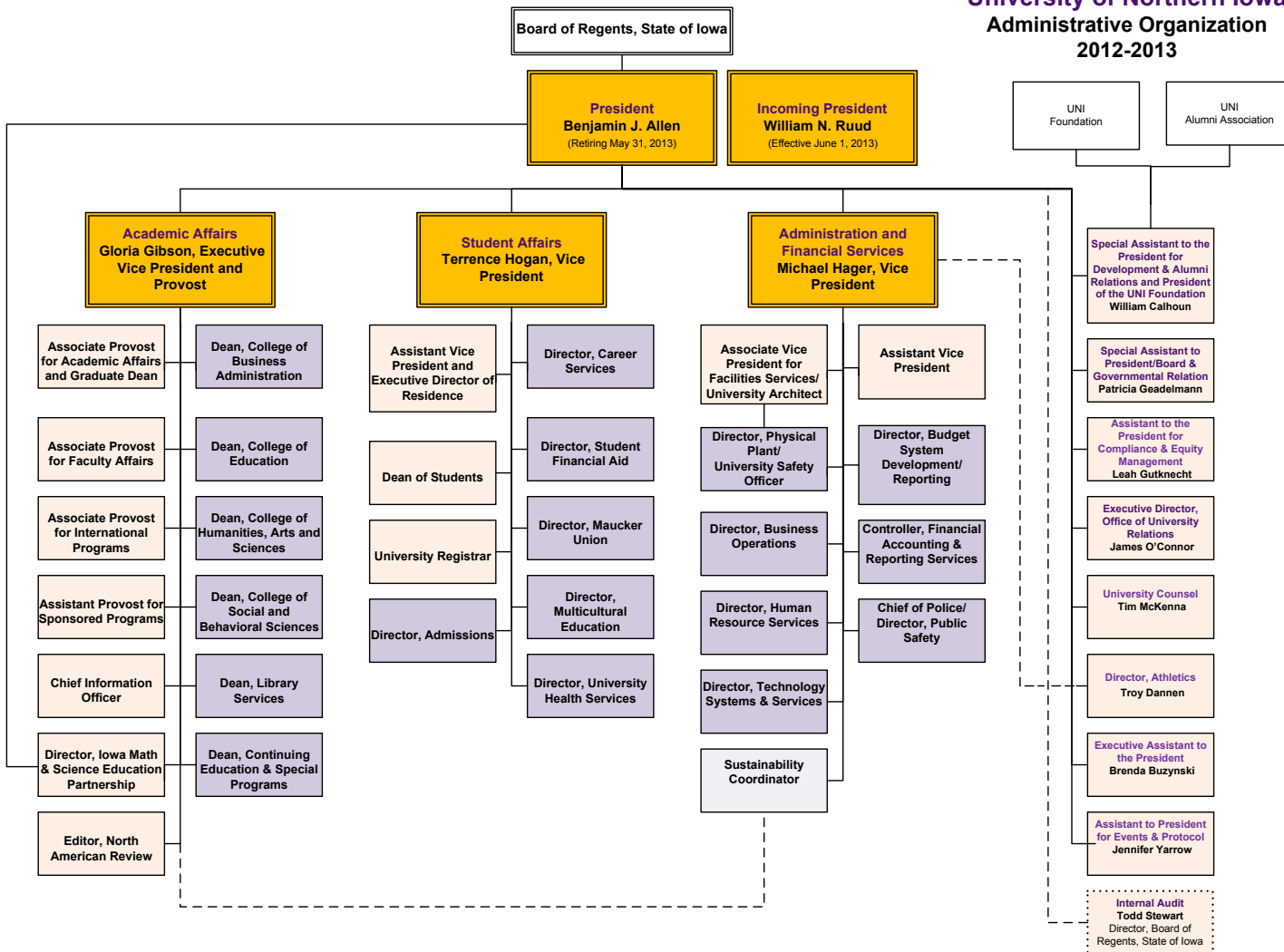
Excellence – in teaching and learning, scholarship and creative work, and service

Sustainability – an attractive, well-maintained campus environment that enhances the living and learning experience with an emphasis on environmental stewardship

University of Northern Iowa

Administrative Organization

2012-2013



PRESIDENT..... Dr. Benjamin J. Allen (retiring May 31, 2013)
INCOMING PRESIDENT..... Dr. William N. Ruud (effective June 1, 2013)

EXECUTIVE VICE PRESIDENT AND PROVOST..... Dr. Gloria Gibson

VICE PRESIDENTS

Vice President for Student Affairs..... Dr. Terrence Hogan
 Vice President for Administration and Financial Services..... Mr. Michael Hager

SPECIAL ASSISTANTS TO PRESIDENT

Development and Alumni Relations and President of the UNI Foundations..... Mr. William Calhoun
 Special Assistant Board and Government Relations..... Dr. Patricia L. Geadelmann
 Assistant to President..... Ms. Leah Gutknecht
 University Counsel..... Mr. Tim McKenna

CHIEF INFORMATION OFFICER..... Dr. Shashi Kaparthi

EXECUTIVE DIRECTOR OF UNIVERSITY RELATIONS..... Mr. James O'Connor

ASSOCIATE AND ASSISTANT PROVOSTS

Associate Provost for Academic Affairs..... Dr. Michael Licari
 Assistant Provost for Sponsored Programs..... Ms. Christine Twait
 Assistant Provost for International Programs..... Dr. Craig Klafter

DEANS

College of Business Administration..... Dr. Farzad Moussavi
 College of Education..... Dr. Dwight Watson
 College of Humanities, Arts and Sciences..... Dr. Joel Haack
 College of Social and Behavioral Sciences..... Dr. Brenda Bass (Interim)
 Continuing Education and Special Programs..... Dr. Kent Johnson
 Graduate College..... Dr. Michael Licari
 Library..... Mr. Christopher Cox

ENROLLMENTS

Headcount: The count of each student enrolled for one or more courses taken in a semester following the second week of the semester's start.

Full-Time Student: An undergraduate student enrolled for 12 or more credit hours per semester and a graduate student enrolled for 9 or more credit hours per semester.

FTE (Full-Time Equivalent): An enrollment unit used to represent a student enrolled for a full course of study. It is calculated by dividing total credit hours generated by 15.0 for undergraduate students and by 9 for graduate students for a semester FTE.

Unclassified/Undeclared Student: A student who has enrolled in instructional courses but has not been officially accepted into one of the institution's authorized degree programs.

Freshman: A first-year undergraduate student.

First-Time First-Year Student: A student attending any institution for the first-time at the undergraduate level. Includes students enrolled in the fall term who attended college for the first time in the prior summer term. Also includes students who entered with advanced standing (college credits earned before graduate from high school).

First-Time Student: A student attending any institution for the first time at the level enrolled. Includes students enrolled in the fall term who attended a postsecondary institution for the first time at the same level in the prior summer term. Also includes students who entered with advanced standing (college credit earned before graduation from high school).

Graduation Rate: Rate required for disclosure and/or reporting purposes under Student Right-to-Know. Calculated as the total number of completers within 150 percent of normal time divided by the revised cohort minus any allowable exclusions.

FACULTY AND STAFF

Faculty (Instruction/Research/Public Service): Persons whose specific assignments customarily are made for the purpose of conducting instruction, research, or public service as a principle activity (or activities), and who hold academic rank titles of professor, associate professor, assistant professor, instructor, lecturer or the equivalent of any of these academic ranks. This category excludes president, vice presidents, and deans. Also excluded are faculty on leave without pay.

Executive, Administrative and Managerial: Persons whose assignments require primary (and major) responsibility for management of the institution, or a customarily recognized department or subdivision, thereof. Assignments require the performance of work directly related to management policies or general business operations of the institution, department or subdivision. It is assumed that assignments in this category customarily and regularly require the incumbent to exercise discretion and independent judgment, and to direct the work of others. Included in this category are all officers holding titles such as president, vice president, dean, director or the equivalent, as well as officers subordinated to any of these administrators with such titles as associate dean, assistant dean, executive officer of academic departments (department heads, or the equivalent) if their principal activity is administrative.

BUDGET AND FINANCE

Current Funds Expenditures (and Transfers): The costs incurred for goods and services used in the conduct of the institution's operations. Includes the acquisition cost of capital assets, such as equipment and library books, to the extent current funds are budgeted for and used by operating departments for such purposes.

Current Funds Revenues: Unrestricted gifts, grants and other resources earned during the reporting period and restricted resources to the extent that such funds were expended for current operating purposes. Excludes restricted current funds received, but not expended because these revenues have not been earned.

Academic Support (Expenditures) for Public Institutions:

Expenditures for the support services that are an integral part of the public institution's primary mission of instruction, research or public service. Includes expenditures for libraries, museums, galleries, audiovisual services, academic computing support, ancillary support, academic administration, personnel development and course and curriculum development. Academic support expenditures for public institutions are measured differently than academic support expenses for private institutions because private institutions' academic support expenses include depreciation costs and interest costs in amounts associated with this function. In addition, private institutions exclude amounts of capital expenditures associated with the academic support function. Finally, operations and maintenance expenses associated with the academic support function are included in the amounts reported by private institutions but are reported separately by public institutions.

Auxiliary Enterprises (Expenditures) for public Institutions:

Expenditures for essentially self-supporting operations of the institution that exist to furnish a service to students, faculty or staff, and that charge a fee that is directly related to, although not necessarily equal to, the cost of the service. Includes mandatory and nonmandatory transfers. Examples are residence halls, food services, student health services, athletics, UNI-Dome and performing arts center. Auxiliary enterprise expenditures are measured differently for public and private institutions. Public institutions include capital expenditure amounts associated with auxiliary enterprise expenditures, but do not include depreciation, interest and operations and maintenance expenses. These amounts are included in private institutions' expenses of auxiliary enterprises.

OTHER

IPEDS: The Integrated Postsecondary Education Data System conducted by National Center for Education Statistics (NCES). IPEDS began in 1986 and involves annual data collections. Survey data are required from all postsecondary institutions that have a Program Participation Agreement (PPA) with the Office of Postsecondary Education, U.S. Department of Education. IPEDS also requests limited data from approximately 3,000 other schools offering postsecondary education programs.

NCA: North Central Association of Colleges and Schools

CALENDAR

Semester/Date

Fall 2012

Monday, August 20
 Monday, September 3
 Friday, October 12
 Monday, October 15
 Monday - Friday, November 19 - 23
 Thursday - Friday, November 22- 23
 Monday - Friday, December 10 - 14
 Saturday, December 15
 Monday & Tuesday, December 24 & 25

Spring 2013

Tuesday, January 1
 Monday, January 14
 Monday, January 21
 Friday, March 1
 Monday, March 4
 Monday - Friday, March 18 - 22
 Monday - Friday, May 6 - 10
 Saturday, May 11

Summer 2013

Monday, May 13
 Monday, May 13
 Monday, May 27
 Friday, June 7
 Monday, June 10
 Monday, June 10
 Friday, June 21
 Monday, June 24
 Friday, July 5
 Thursday, July 4
 Monday, July 8
 Friday, August 2

Event

Semester begins
 University holiday
 First half ends
 Second half begins
 Thanksgiving break
 University holiday
 Final exam week
 Commencement
 University holiday

University holiday
 Semester begins
 University holiday
 First half ends
 Second half begins
 Spring break
 Final exam week
 Commencement

First 4 wk session begins
 First 6 wk session begins
 University holiday
 First 4 wk session ends
 Second 4 wk session begins
 8 wk session begins
 First 6 wk session ends
 Second 6 wk session begins
 Second 4 wk session ends
 University holiday
 Third 4 wk session begins
 All sessions end

Semester/Date

Fall 2013

Monday, August 26
 Monday, September 2
 Friday, October 18
 Monday, October 21
 Monday - Friday, November 25 - 29
 Thursday - Friday, November 28- 29
 Monday - Friday, December 16 - 20
 Saturday, December 21
 Tuesday & Wednesday, December 24 & 25

Spring 2014

Monday, January 2
 Monday, January 13
 Monday, January 20
 Friday, February 28
 Monday, March 3
 Monday - Friday, March 17 - 21
 Monday - Friday, May 5 - 9
 Saturday, May 10

Summer 2014

Monday, May 12
 Monday, May 12
 Monday, May 26
 Friday, June 6
 Monday, June 9
 Monday, June 9
 Friday, June 20
 Monday, June 23
 Thursday, July 3
 Friday, July 4
 Monday, July 7
 Friday, August 1



New Students

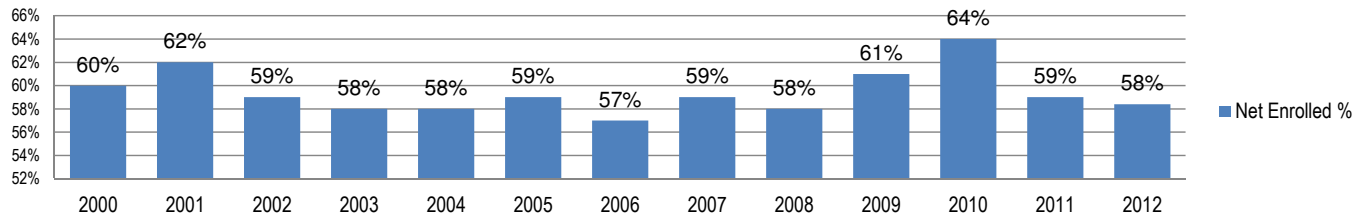


New Students

Fall 2012 New Students*

	Applications		Admissions		**Net Enrolled		NET ENROLLED					
							Resident		Non-Resident		International	
	N	%	N	%	N	%	N	%	N	%	N	%
TOTAL	7,321		5,566		3,252		2,928		237		87	
Percent				76.0		44.4		90.0		7.3		2.7
Undergraduate												
New Freshmen	4,206	70.2	3,350	70.5	1,704	63.4	1,563	62.8	119	76.3	22	48.9
Transfers	1,782	29.8	1,405	29.5	985	36.6	925	37.2	37	23.7	23	51.1
Total	5,988		4,755		2,689		2,488		156		45	
Percent				79.4		56.6		92.5		5.8		1.7
Graduate												
Students	1,333		811		563		440		81		42	
Percent				60.8		69.4		78.2		14.4		7.5

Net Enrolled % of Admitted

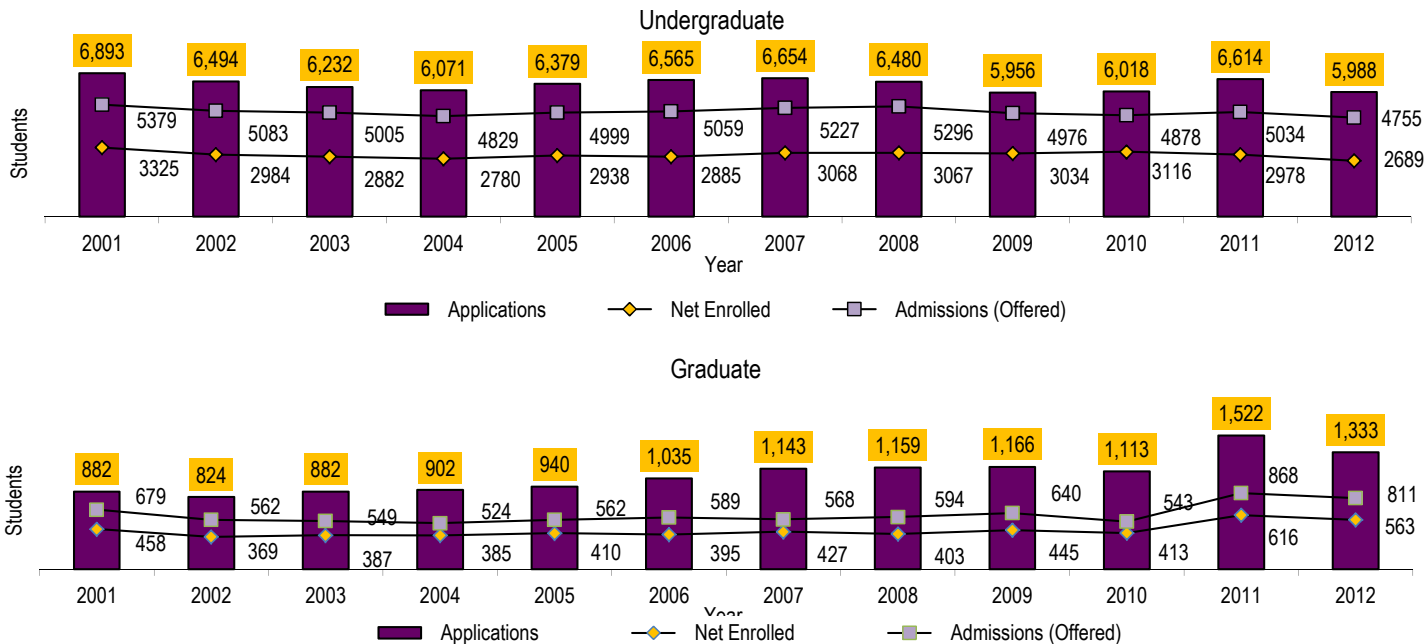


Source: Office of the Registrar

*The Undergraduate data does not reflect unclassified new students.

**Enrolled as % of applied

New Student Applications, Admissions and Enrolled Fall Semester 2001-2012



Source: Office of the Registrar

New Students Enrolled By Residence 2001-2012

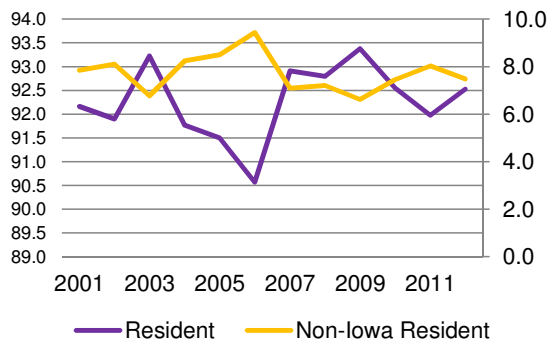
UNDERGRADUATE*

	Resident	Non-Resident	International Student
2001	3,185	193	78
2002	2,848	164	87
2003	2,780	105	97
2004	2,640	151	86
2005	2,766	149	108
2006	2,688	152	128
2007	2,937	191	33
2008	2,846	178	43
2009	2,834	146	55
2010	2,884	158	74
2011	2,739	177	62
2012	2,488	156	45

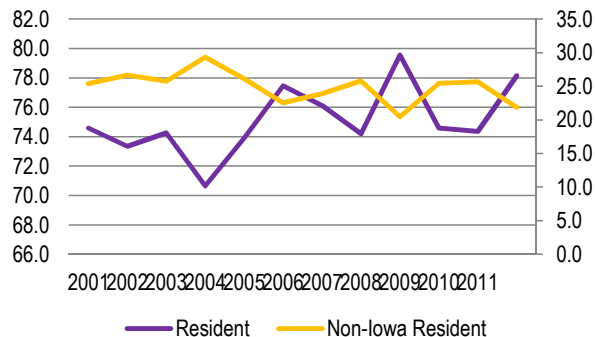
GRADUATE

	Resident	Non-Resident	International Student	Total	Annual Percent Change
2001	317	34	74	3,881	4.8
2002	264	43	53	3,459	-10.9
2003	277	42	54	3,355	-3.0
2004	272	57	56	3,262	-2.8
2005	303	43	64	3,433	5.2
2006	299	44	43	3,354	-2.3
2007	325	33	69	3,588	7.0
2008	299	51	53	3,470	-3.3
2009	354	50	41	3,480	0.3
2010	308	55	50	3,529	1.4
2011	458	121	37	3,594	1.8
2012	440	81	42	3,252	-9.5

Undergraduate New Student %



Graduate New Student %



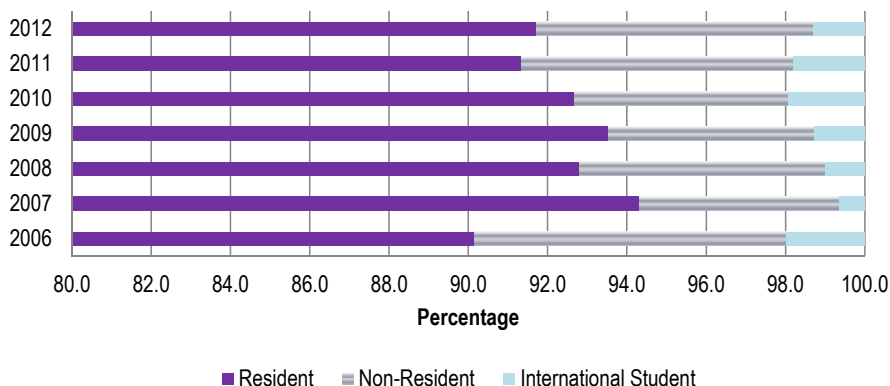
Source: Office of the Registrar

*New undergraduate students are only new freshmen and new transfers.

New Freshmen Enrollment by Residence 2006-2012

	2006		2007		2008		2009		2010		2011		2012	
	N	%	N	%	N	%	N	%	N	%	N	%	N	%
New Freshmen	1,768		1,991		2,015		1,946		1,978		1,937		1,704	
Annual Percent Change		1.8		12.6		1.2		-3.4		1.6		-2.1		-12.0
Resident	1,594	90.2	1,878	94.3	1,870	92.8	1,820	93.5	1,833	92.7	1,769	91.3	1,563	91.7
Non-Resident	139	7.9	100	5.0	125	6.2	101	5.2	107	5.4	133	6.9	119	7.0
International Student	35	2.0	13	0.7	20	1.0	25	1.3	38	1.9	35	1.8	22	1.3

New Freshmen Enrollment by Residence

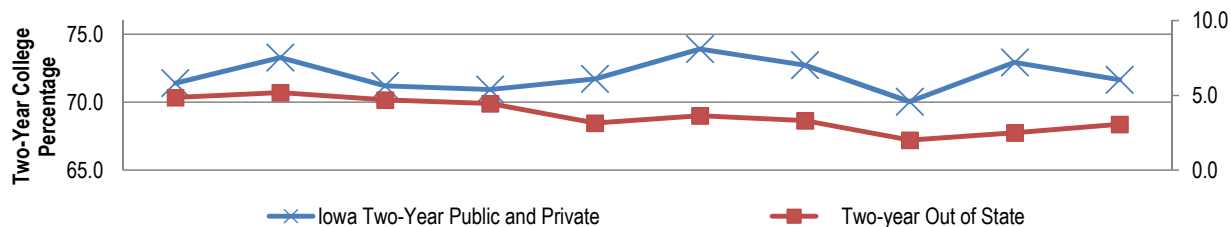


Source: Office of the Registrar

New Undergraduate Transfer Students by Type of Transfer College

	2002	2003	2004	2005	2006	2007	2008	2009	2010	2011	2012
TOTAL	1,119	1,097	1,080	1,201	1,117	1,077	1,052	1,088	1,138	1,041	985
Annual Percent Change	-9.4	-2.0	-1.5	11.2	-7.0	-3.6	-2.3	3.4	4.6	-8.5	-5.4
Iowa Two-Year Public and Private	799	804	769	852	801	796	765	762	830	746	698
Iowa Area Community Colleges	773	786	757	835	798	789	757	762	828	746	698
Iowa Two-Year Private	26	18	12	17	3	7	8	0	2	0	0
Iowa Four-Year Public and Private	170	162	167	203	197	165	171	186	183	174	181
Iowa Four-Year Public											
Iowa State University	22	43	45	35	26	30	23	32	32	32	21
University of Iowa	49	40	35	41	57	48	46	42	51	51	35
University of Northern Iowa											25
Subtotal	71	83	80	76	83	78	69	74	83	83	81
Iowa Four-Year Private	99	79	87	127	114	87	102	112	100	91	100
Non-Iowa (US) Total	150	131	144	146	119	116	116	140	125	121	106
Two-year Out of State	60	64	58	55	39	45	41	25	31	38	26
Four-year Out of State	90	67	86	91	80	71	75	115	94	83	80

Two-Year New Undergraduate Transfer Students



Source: Office of the Registrar

New Freshmen ACT Composite Scores and High School Class Rank

ACT Composite Scores

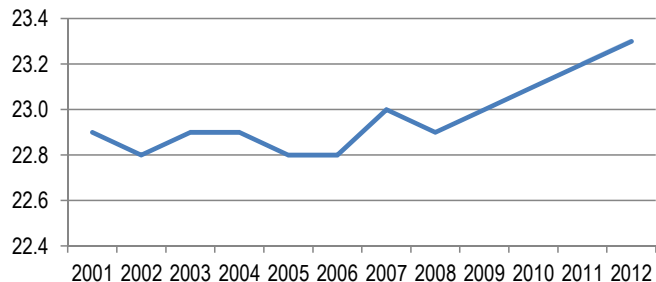
	Mean	75 th Percentile	25 th Percentile
2001	22.9	24.8	20.8
2002	22.8	25.0	20.0
2003	22.9	25.0	20.0
2004	22.9	25.1	20.0
2005	22.8	25.1	20.0
2006	22.8	25.8	21.0
2007	23.0	25.7	20.9
2008	22.9	25.7	20.9
2009	23.0	25.9	21.1
2010	23.1	25.0	21.1
2011	23.2	25.0	21.0
2012	23.3	25.0	21.0

High School Rank

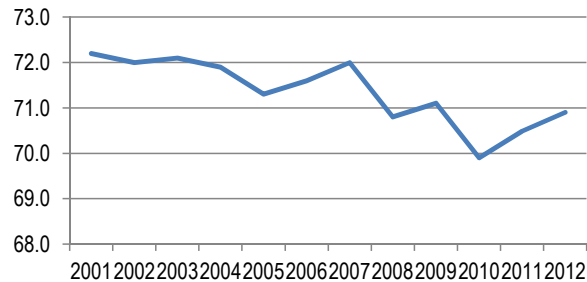
	Mean	Percent in Upper 10%	Percent in Upper 20%	Percent in Upper 50%
2001	72.2	18.1	38.6	90.5
2002	72.0	17.7	37.5	89.9
2003	72.1	19.1	38.6	89.4
2004	71.9	19.1	38.5	89.7
2005	71.3	19.0	39.1	89.5
2006	71.6	18.2	37.6	88.7
2007	72.0	19.0	38.9	88.5
2008	70.8	18.6	37.6	85.3
2009	71.1	18.9	40.1	85.3
2010	69.9	17.6	36.2	84.0
2011	70.5	19.1	37.2	84.1
2012	70.9	20.0	38.9	84.6

Source: Office of the Registrar

ACT Mean Composite Score



High School Mean Rank





Enrollment

Enrollment



Enrollment

Fall 2012 Students Profile by College

	Total University	Business	Education	Humanities, Arts & Sciences^	S&B Sciences	No Specific College
TOTAL	12,273	2,127	2,707	4,080	2,090	1,269
Percent	100	17	22	33	17	10
Full-Time	10,361	1,892	2,213	3,609	1,872	775
Part-Time	1,912	235	494	471	218	494
Female	7,149	831	1,978	2,185	1,261	894
Male	5,124	1,296	729	1,895	829	375
Freshman	2,091	398	358	663	268	404
Sophomore	2,096	378	403	765	366	184
Junior	2,737	614	523	980	559	61
Senior	3,589	648	895	1,291	666	89
Unclassified	142	0	0	0	0	142
Graduate	1,618	89	528	381	231	389
International Students:						
Undergraduate	319	134	8	89	14	74
Graduate	135	29	35	56	11	4
1st Majors:						
Undergraduate	10,655	2,038	2,179	3,699	1,859	880
Graduate	1,618	89	528	381	231	389
2011-2012 Degrees Granted:						
Baccalaureate (Bachelor's)	2,440	531	541	839	468	61
Master's	572	52	166	214	132	8
Specialists	10	-	10	-	-	-
Doctorates	12	-	11	1	-	-

Source: Office of the Registrar

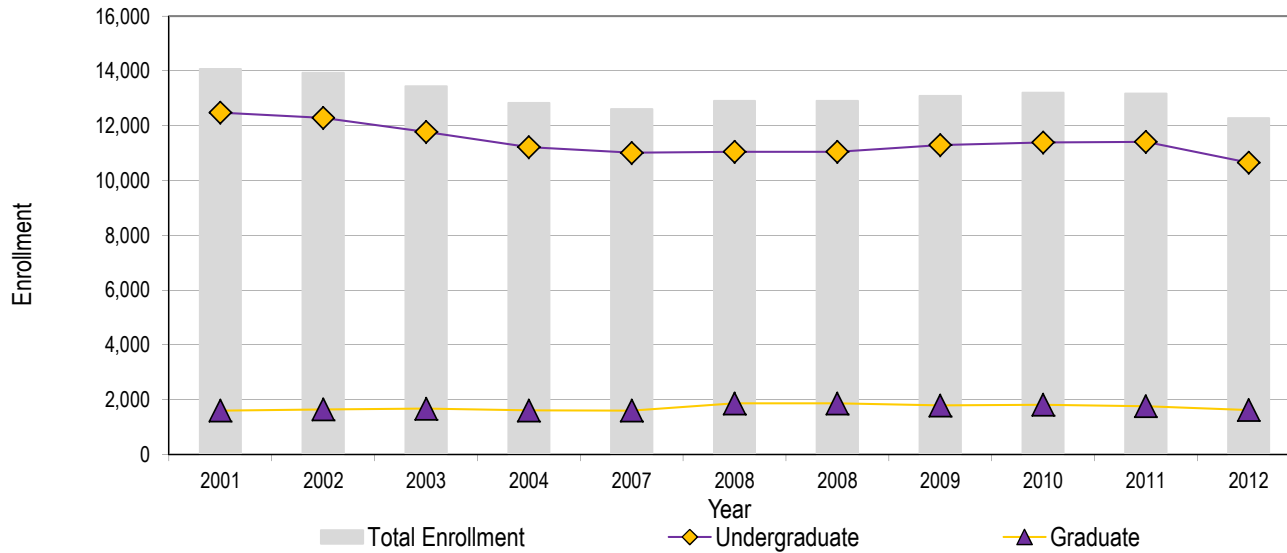
^Effective July 2011, the merge of College of Humanities and Fine Arts and College of Natural Sciences to College of Humanities, Arts and Sciences

Headcount Enrollment 2001-2012

	UNDERGRADUATE		GRADUATE		Total	Annual
	Full-Time	Part-Time	Full-Time	Part-Time		Percent Change
2001	11,209	1,265	577	1,019	14,070	1.6
2002	10,939	1,343	550	1,094	13,926	-1.0
2003	10,510	1,264	566	1,101	13,441	-3.5
2004	9,987	1,233	678	926	12,824	-4.6
2005	9,782	1,170	681	880	12,513	-2.4
2006	9,606	1,096	690	868	12,260	-2.0
2007	9,888	1,122	692	907	12,609	2.8
2008	10,028	1,019	731	1,130	12,908	2.4
2009	10,279	1,015	781	1,005	13,080	1.3
2010	10,378	1,013	770	1,040	13,201	0.9
2011	10,209	1,199	742	1,018	13,168	-0.2
2012	9,679	976	682	936	12,273	-6.8

Source: Office of the Registrar

Headcount Enrollment by Level 2001-2012*



Source: Office of the Registrar

*Includes Full-Time and Part-Time Students

Undergraduate Enrollment by Age 2002-2012

Fall Semester	2002	2003	2004	2005	2006	2007	2008	2009	2010	2011	2012
Total Enrollment	12,282	11,774	11,220	10,952	10,702	11,010	11,047	11,294	11,391	11,408	10,655
Under 18	110	52	106	108	106	113	91	94	102	49	21
18	1,553	1,004	1,435	1,463	1,526	1,729	1,758	1,708	1,733	1,165	1,001
19	1,979	1,734	1,712	1,669	1,699	1,756	1,950	1,915	1,909	1,879	1,779
20	2,472	2,053	1,964	2,062	1,974	1,986	2,013	2,254	2,201	2,072	2,008
21	2,453	2,461	2,338	2,067	2,120	2,114	2,045	2,054	2,300	2,227	2,158
22	1,682	1,978	1,682	1,584	1,353	1,417	1,383	1,330	1,322	1,729	1,611
23	615	980	665	677	686	596	579	577	527	855	776
24	291	361	290	289	312	312	258	292	264	309	352
25	177	192	184	194	165	191	184	174	197	200	158
26	130	145	118	121	120	129	126	139	137	152	118
27	80	104	100	92	77	90	88	98	91	118	89
28	80	79	77	78	73	69	74	91	69	82	86
29	52	60	51	58	58	66	57	69	71	61	62
30-39	355	341	290	294	263	268	256	310	301	325	293
40-49	178	159	148	138	116	120	120	127	104	134	101
50-64	73	68	59	55	51	49	61	60	61	48	41
65 and older	2	3	1	3	3	5	4	2	2	3	1

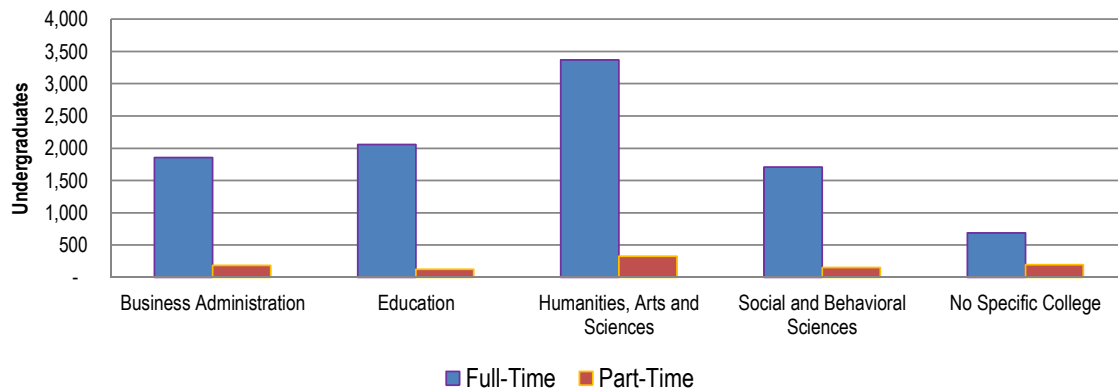
Source: Office of the Registrar

Undergraduate Headcount by College: Fall 2008 - 2012

	Full-Time					Part-Time				
	2008	2009	2010	2011	2012	2008	2009	2010	2011	2012
Total University	10,028	10,279	10,378	10,209	9,679	1,019	1,015	1,013	1,198	976
Business Administration	2,265	2,152	2,136	1,957	1,856	181	198	188	228	182
Education	1,977	2,150	2,241	2,186	2,058	108	146	140	182	121
Humanities, Arts and Sciences	-	-	-	3,481	3,371	-	-	-	365	328
Social and Behavioral Sciences	1,613	1,684	1,710	1,753	1,706	137	119	153	168	153
No Specific College	952	867	849	832	688	297	284	276	255	192

Source: Office of the Registrar

Fall 2012 Undergraduates by College



Fall 2012 Enrollment by Residence

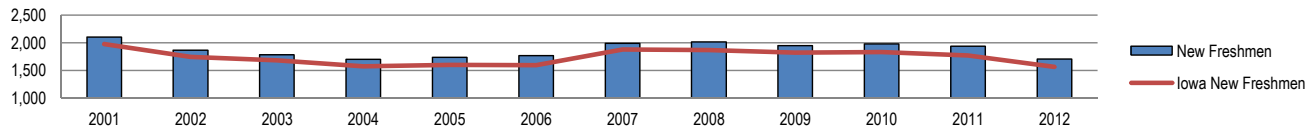
	Iowa Resident		U.S. Non-Iowa Resident		International Student		TOTAL
	N	%	N	%	N	%	N
Enrollment	11,095	90.4	724	5.9	454	3.7	12,273
New Freshmen	1,563	91.7	119	7.0	22	1.3	1,704
Undergraduate	9,806	92.0	530	5.0	319	3.0	10,655
New Graduate	440	78.2	81	14.4	42	7.5	563
Graduate	1,289	79.7	194	12.0	135	8.3	1,618

Source: Office of the Registrar

Enrollment by Residence 2001-2012

	2001	2002	2003	2004	2005	2006	2007	2008	2009	2010	2011	2012	5 Yr % Change	10 Yr % Change
Fall Semester Enrollment	14,070	13,926	13,441	12,824	12,513	12,260	12,609	12,908	13,080	13,201	13,168	12,273	-4.9	-8.7
Iowa Resident	13,010	12,781	12,356	11,793	11,400	11,129	11,444	11,562	11,896	11,978	11,915	11,095	-4.0	-10.2
U.S., Non-Iowa Resident	705	779	701	680	691	699	693	882	731	743	765	724	-17.9	3.3
International Student	355	366	384	351	422	432	472	464	453	480	488	454	-2.2	18.2
New Freshmen	2,104	1,865	1,785	1,700	1,737	1,768	1,991	2,015	1,946	1,978	1,937	1,704	-15.4	-4.5
Iowa Resident	1,979	1,743	1,683	1,573	1,598	1,594	1,878	1,870	1,820	1,833	1,769	1,563	-16.4	-7.1
U.S., Non-Iowa Resident	112	110	88	105	124	139	100	125	101	107	133	119	-4.8	35.2
International Student	13	12	14	22	15	35	13	20	25	38	35	22	10.0	57.1
Undergraduate	12,474	12,282	11,774	11,220	10,952	10,702	11,010	11,047	11,294	11,391	11,408	10,655	-3.5	-9.5
Iowa Resident	11,754	11,504	11,061	10,516	10,185	9,907	10,157	10,185	10,469	10,532	10,522	9,806	-3.7	-11.3
U.S., Non-Iowa Resident	529	571	507	516	537	542	555	598	541	526	541	530	-11.4	4.5
International Student	191	207	206	188	230	253	298	264	284	333	345	319	20.8	54.9
Graduate	1,596	1,644	1,667	1,604	1,561	1,558	1,599	1,861	1,786	1,810	1,760	1,618	-13.1	-2.9
Iowa Resident	1,256	1,277	1,295	1,277	1,215	1,222	1,287	1,377	1,427	1,446	1,393	1,289	-6.4	-0.5
U.S., Non-Iowa Resident	176	208	194	164	154	157	138	284	190	217	224	194	-31.7	0.0
International Student	164	159	178	163	192	179	174	200	169	147	143	135	-32.5	-24.2

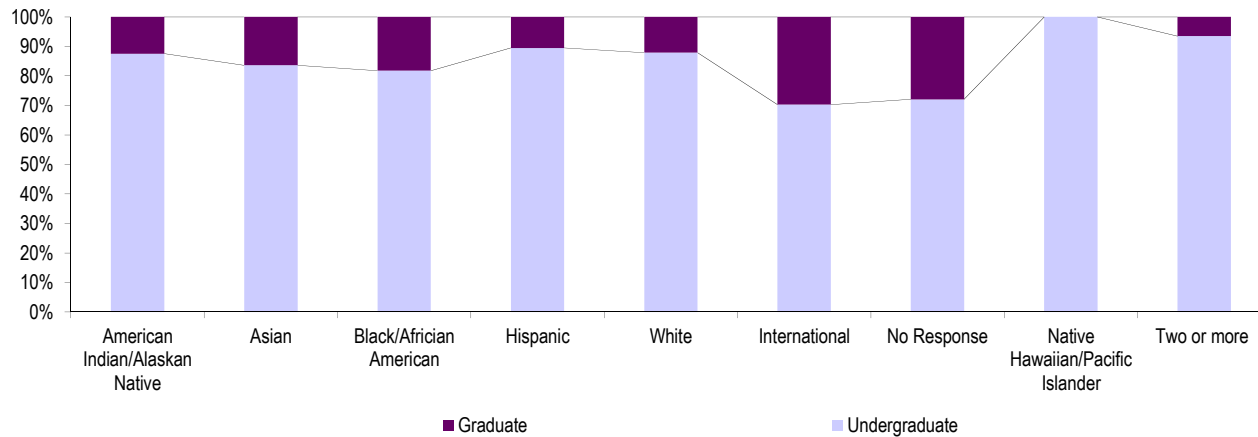
New Freshmen



Source: Office of the Registrar

Fall 2012 Enrollment by Race/Ethnicity

	American Indian/ Alaskan Native		Asian		Black/ African American		Hispanic		White		International		No Response		Native Hawaiian/ Pacific Islander		Two or more	
	N	%	N	%	N	%	N	%	N	%	N	%	N	%	N	%	N	%
Enrollment	24	100	128	100	367	100	313	100	10,601	100	454	100	229	100	4	100	153	100
Undergraduate	21	87.5	107	83.6	300	81.7	280	89.5	9,316	87.9	319	70.3	165	72.1	4	100.0	143	93.5
Graduate	3	12.5	21	16.4	67	18.3	33	10.5	1,285	12.1	135	29.7	64	27.9	0	0.0	10	6.5
Percentage		0.2		1.0		3.0		2.6		86.4		3.7		1.9		0.0		1.2



Ug 10,655
Grad 1,618

Minority Student Enrollment 2001-2012

UNDERGRADUATE

GRADUATE

	American Indian/ Alaskan Native	Asian/ Pacific Islander	Black/ African American	Hispanic/ Latino	Native Hawaiian/ Pacific Islander	Two or more		American Indian/ Alaskan Native	Asian/ Pacific Islander	Black/ African American	Hispanic/ Latino	Native Hawaiian/ Pacific Islander	Two or more
2001	27	127	296	161				3	15	74	19		
2002	25	109	319	195				6	19	78	12		
2003	28	130	323	187				4	11	103	21		
2004	30	114	324	200				4	11	101	25		
2005	23	116	317	164				3	13	98	22		
2006	28	131	288	181				3	16	89	24		
2007	34	133	287	177				2	18	70	24		
2008	28	121	300	199				6	26	92	38		
2009	20	117	305	243	5	77		3	19	72	39	0	4
2010	21	105	303	232	4	103		4	19	80	44	0	7
2011	17	118	300	257	2	121		7	26	66	41	1	11
2012	21	107	300	280	4	143		3	21	67	33	0	10

Source: Office of the Registrar

*Includes all international students; other categories include American citizens, immigrants, asylees, and refugees only.

NOTE: The Race/Ethnicity reporting was changed in Fall 2009 semester to implement the new U.S. Department of Education guidelines.

Fall On-Campus Headcount and Full-Time Equivalent (FTE) Enrollment by Level 2001-2012

	Headcount							FTE Enrollment						
	Undergraduate					Graduate		Undergraduate					Graduate	
	F	S	Jr	Sr	Unclassified	Master's	Advanced	F	S	Jr	Sr	Unclassified	Master's	Advanced
2001	2,830	2,464	3,188	3,735	257	1,174	422	2,561	2,246	2,827	3,226	81	888	252
2002	2,522	2,293	3,296	3,874	297	1,163	481	2,319	2,098	2,928	3,328	88	839	279
2003	2,278	2,085	3,195	3,960	256	1,173	494	2,063	1,890	2,848	3,403	79	862	279
2004	2,199	1,957	2,921	3,936	207	1,100	504	1,997	1,764	2,589	3,377	68	893	318
2005	2,189	2,004	2,928	3,591	240	1,112	449	2,045	1,869	2,665	3,133	89	933	282
2006	2,266	1,919	2,857	3,418	242	1,113	445	2,090	1,814	2,631	3,001	87	945	267
2007	2,520	1,924	2,866	3,425	275	1,157	442	2,299	1,808	2,646	3,003	100	998	253
2008	2,528	2,100	2,766	3,416	237	1,369	492	2,343	2,003	2,563	3,010	94	1,080	272
2009	2,377	2,214	2,971	3,482	250	1,300	486	2,172	2,109	2,772	3,057	93	1,098	270
2010	2,340	2,181	3,037	3,574	259	1,289	521	2,139	2,068	2,827	3,159	108	1,076	304
2011	2,388	2,173	2,823	3,872	152	1,236	524	2,060	2,031	2,562	3,342	60	1,046	292
2012	2,091	2,096	2,737	3,589	142	1,161	457	1,891	1,999	2,533	3,153	54	977	266

Source: Office of the Registrar

First Major Only by College and Level: Fall 2007 - 2012

	Undergraduate						Graduate					
	2007	2008	2009	2010	2011	2012	2007	2008	2009	2010	2011	2012
Total University	11,010	11,047	11,294	11,391	11,408	10,655	1,599	1,861	1,786	1,810	1,760	1,618
Business Administration	2,359	2,446	2,350	2,324	2,185	2,038	84	110	85	65	84	89
Education	2,093	2,085	2,296	2,381	2,368	2,179	695	670	667	564	557	528
Humanities , Arts and Sciences	-	-	-	-	3,846	3,699	-	-	-	-	472	381
Social and Behavioral Sciences	1,765	1,750	1,803	1,863	1,921	1,859	171	183	192	282	249	231
No Specific College	1,331	1,249	1,151	1,125	1,088	880	256	481	377	418	398	389

Source: Office of the Registrar

Annual Degrees Awarded by Level 2002-2012

	2001- 2002	2002- 2003	2003- 2004	2004- 2005	2005- 2006	2006 - 2007	2007 - 2008	2008 - 2009	2009 - 2010	2010 - 2011	2011 - 2012	5 Yr % Change	10 Yr % Change
Total Degrees Awarded	2,851	3,018	3,039	3,176	2,933	2,748	2,720	2,751	2,934	2,725	3,034	10.4	6.4
Baccalaureate	2,420	2,592	2,584	2,669	2,423	2,259	2,221	2,268	2,347	2,198	2,440	8.0	0.8
Master's	415	405	434	494	485	471	474	467	561	509	572	21.4	37.8
Specialists	4	9	11	3	7	10	9	6	6	5	10	0.0	150.0
Doctorates	12	12	10	10	18	8	16	10	20	13	12	50.0	0.0
Undergraduate Degrees Awarded	2,420	2,592	2,584	2,669	2,423	2,259	2,221	2,268	2,347	2,198	2,440	8.0	0.8
Bachelor of Arts	2,307	2,449	2,463	2,514	2,272	2,148	2,121	2,148	2,201	2,079	2,293	6.8	-0.6
Bachelor of Fine Arts	8	7	8	9	15	8	8	3	8	6	11	37.5	37.5
Bachelor of Music	22	24	23	22	19	19	14	22	27	15	22	15.8	0.0
Bachelor of Science	71	84	74	90	93	64	64	76	84	84	98	53.1	38.0
Bachelor of Technology*	0	1	0	0	0	0	0	0	0	0	0	-	-
Bachelor of Liberal Studies	12	27	16	34	24	20	14	19	27	14	16	-20.0	33.3
Graduate Degrees Awarded	431	426	455	507	510	489	499	483	587	527	594	21.5	37.8
Master of Accounting	2	7	23	13	19	11	23	36	29	21	25	127.3	NA
Master of Arts in Education	107	114	127	147	108	129	119	99	147	105	121	-6.2	13.1
Master of Arts	217	215	198	206	237	231	208	204	243	255	284	22.9	30.9
Master of Business Administration	36	5	21	52	62	35	42	42	40	31	27	-22.9	-25.0
Master of Music	11	12	11	19	12	13	22	14	24	10	26	100.0	136.4
Master of Public Policy	10	8	11	6	5	11	16	10	4	10	11	0.0	10.0
Master of Science	16	17	13	21	15	10	10	16	15	19	21	110.0	31.3
Master of Social Work	16	27	30	30	27	31	29	27	40	41	40	29.0	150.0
Professional Science Master's	0	0	0	0	0	0	5	19	19	17	17	NA	NA
Specialist in Education	4	9	11	3	7	10	9	6	6	5	10	0.0	150.0
Doctor of Industrial Technology	5	2	2	1	3	0	1	1	2	1	1	NA	-80.0
Doctor of Education	7	10	8	9	15	8	15	9	18	12	11	37.5	57.1

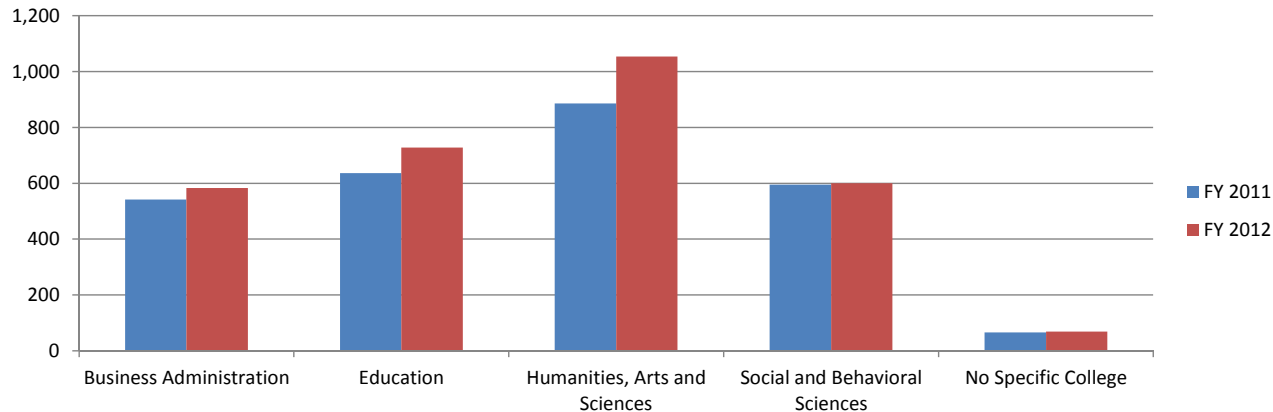
Source: Office of the Registrar

*The Bachelor of Technology Degree was dropped effective Fall 1996 when the Bachelor of Technology Major in Construction Management was changed to a Bachelor of Science Major in Construction Management.

Degrees Granted by College 2010-2011 and 2011-2012

	Baccalaureates				Master's				Specialists				Doctorates			
	2010-2011		2011-2012		2010-2011		2011-2012		2010-2011		2011-2012		2010-2011		2011-2012	
	N	%	N	%	N	%	N	%	N	%	N	%	N	%	N	%
Total Degrees Granted	2,198	100	2,440	100	509	100	572	100	5	100	10	100	13	100	12	100
Business Administration	490	22.3	531	21.8	52	10.2	52	9.1	0	0	0	0	0	0	0	0
Education	437	19.9	541	22.2	182	35.8	166	29.0	5	100	10	100	12	92.3	11	91.7
Humanities, Arts and Sciences	727	33.1	839	34.4	158	31.0	214	37.4	0	0	0	0	1	7.7	1	8.3
Social and Behavioral Sciences	478	21.7	468	19.2	117	23.0	132	23.1	0	0	0	0	0	0.0	0	0
No Specific College	66	3.0	61	2.5	0	0.0	8	1.4	0	0	0	0	0	0.0	0	0

Source: Office of the Registrar



2011-2012 Degrees by College
3,034 Degrees Granted

Undergraduate Retention and Graduation Rates 1992-2011

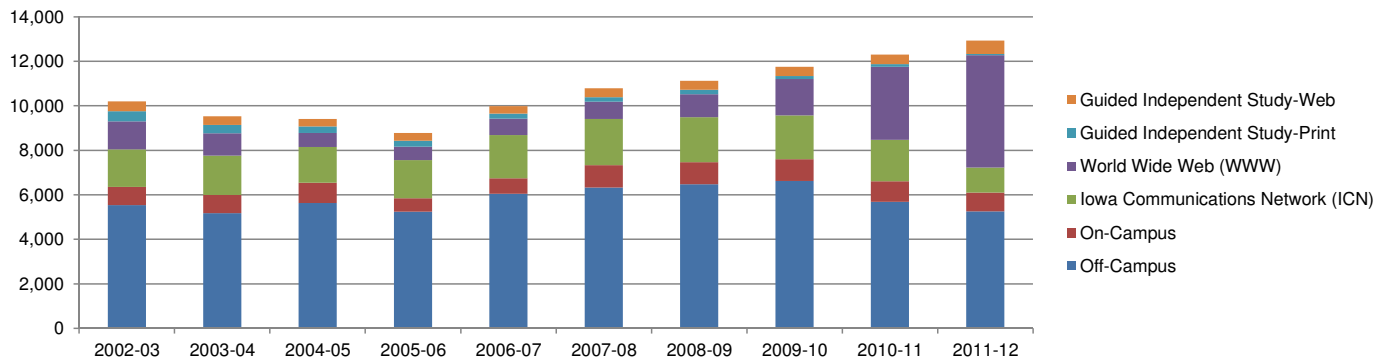
Admit Year	Continuing 2nd Year		Graduating 4th Year		Graduating 6th Year		
	Total First Time Freshmen	N	%	N	%	N	%
1992	1,658	1,349	81.4	436	26.3	1,033	62.3
1993	1,806	1,449	80.2	492	27.2	1,139	63.1
1994	1,856	1,498	80.7	541	29.1	1,161	62.6
1995	2,007	1,642	81.8	606	30.2	1,293	64.4
1996	2,012	1,649	82.0	674	33.5	1,342	66.7
1997	1,919	1,582	82.4	556	29.0	1,254	65.3
1998	1,982	1,605	81.0	588	29.7	1,273	64.2
1999	2,124	1,729	81.4	713	33.6	1,379	64.9
2000	2,218	1,863	84.0	756	34.1	1,492	67.3
2001	2,064	1,681	81.4	672	32.6	1,348	65.3
2002	1,822	1,469	80.6	614	33.7	1,152	63.2
2003	1,740	1,417	81.4	618	35.5	1,160	66.7
2004	1,652	1,337	80.9	584	35.4	1,110	67.2
2005	1,694	1,390	82.1	616	36.4	1,130	66.7
2006	1,684	1,386	82.3	648	38.5	1,117	66.3
2007	1,922	1,608	83.7	708	36.8		
2008	1,976	1,627	82.3	747	37.8		
2009	1,917	1,582	82.5				
2010	1,934	1,586	82.0				
2011	1,897	1,543	81.3				

Source: Office of the Registrar

Continuing Education Credit Enrollment Trends 2002-2012

	2002 - 2003	2003 - 2004	2004 - 2005	2005 - 2006	2006 - 2007	2007 - 2008	2008 - 2009	2009 - 2010	2010 - 2011	2011 - 2012
Total	10,203	9,528	9,413	8,778	9,984	10,783	11,127	11,749	12,302	12,924
Annual Percent Change	3.9	-6.6	-1.2	-6.7	13.7	8.0	3.2	5.6	4.7	5.1
Off-Campus	5,543	5,182	5,629	5,246	6,048	6,330	6,477	6,617	5,690	5,257
On-Campus	809	814	910	596	700	1001	995	989	921	846
Iowa Communications Network (ICN)	1,686	1,768	1,606	1,719	1,936	2,070	2,009	1,967	1,856	1,123
World Wide Web (WWW)	1,260	1,002	630	595	735	782	1,044	1,633	3,289	5,041
Guided Independent Study-Print	454	372	294	273	229	200	197	130	109	63
Guided Independent Study-Web	451	390	344	349	336	400	405	413	437	594

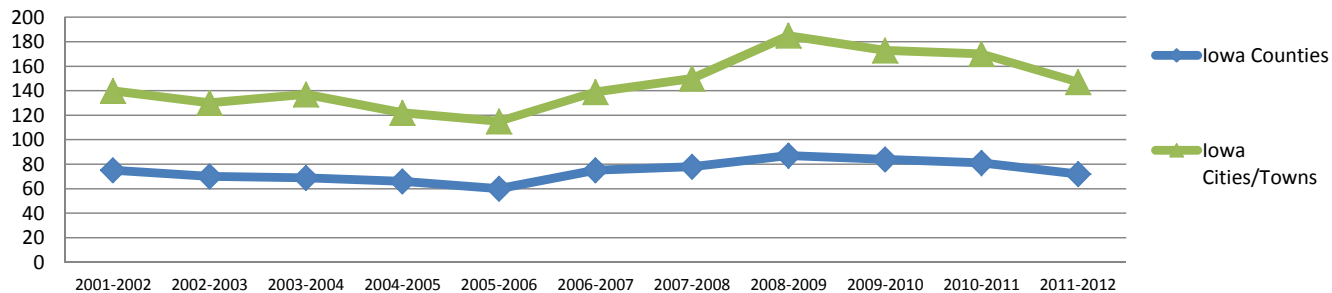
Source: Continuing Education and Special Programs



Continuing Education Courses Offered 2001-2012

	Iowa Counties	Iowa Cities/Towns	Number of Off-Campus Degree and Certificate Programs
2001-2002	75	140	20
2002-2003	70	130	18
2003-2004	69	137	19
2004-2005	66	122	20
2005-2006	60	115	21
2006-2007	75	139	22
2007-2008	78	150	21
2008-2009	87	185	23
2009-2010	84	173	24
2010-2011	81	170	24
2011-2012	72	147	25

Continuing Education Course Locations Offered

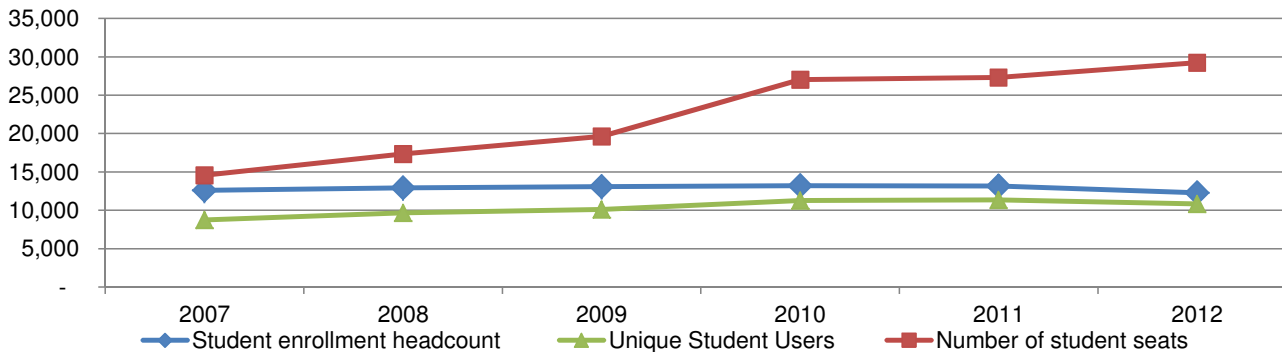


Source: *Continuing Education and Special Programs*

Web-based Learning Management System (LMS) 2007-2012

	Fall					
	2007	2008	2009	2010	2011	2012
Student enrollment headcount	12,609	12,908	13,080	13,201	13,168	12,273
Number of unique student users enrolled in LMS	8,723	9,658	10,108	11,263	11,357	10,835
Number of student seats	14,570	17,333	19,644	27,032	27,307	29,237
Number of instructors or designers	293	435	411	385	419	468
Number of active academic organized sections in LMS	498	671	750	1,001	1,248*	1,309

Source: ITS - Educational Technology



*Prior to the Fall 2011 semester, UNI implemented a new course numbering system which resulted in undergraduate and graduate sections of the same class being entered individually into the new Student Information System (SIS). Although we use the same method to count the number of sections, this change will result in a higher number of sections counted than with the previous SIS used for the Fall 2010 and older semesters. This is noted so that viewers do not directly compare the "Number of active academic organized sections in LMS" values for Fall 2010 and Fall 2011.

Fall Semester Residence Hall Occupancy by Gender and Level 2001-2012

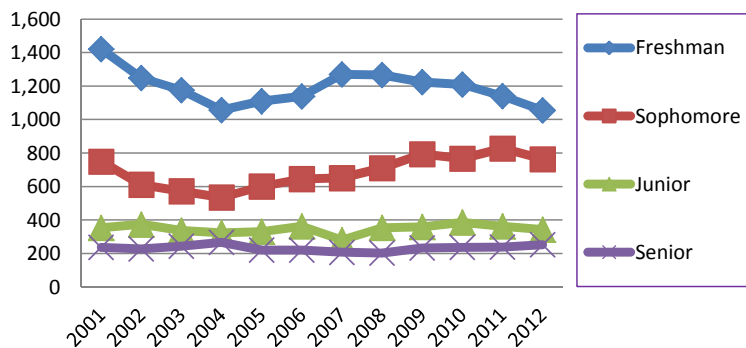
Female

	Freshman	Sophomore	Junior	Senior	Unclassified & Graduates
2001	1,421	749	354	237	66
2002	1,249	611	374	228	81
2003	1,176	572	338	243	52
2004	1,057	535	323	266	95
2005	1,110	600	330	221	120
2006	1,138	645	363	220	103
2007	1,270	651	280	207	109
2008	1,267	710	353	203	104
2009	1,223	794	359	233	65
2010	1,209	767	386	237	101
2011	1,141	828	363	238	78
2012	1,055	763	343	252	84

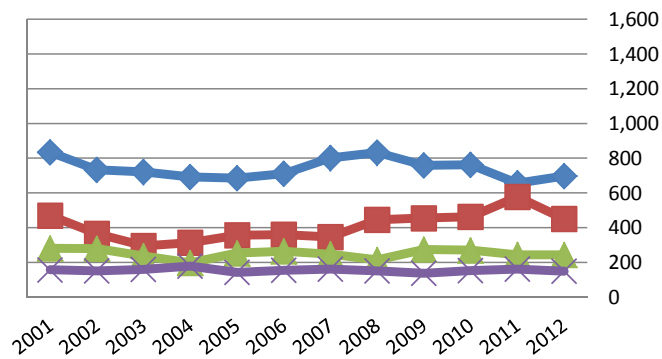
Male

	Freshman	Sophomore	Junior	Senior	Unclassified & Graduates
2001	835	469	281	157	44
2002	733	365	279	151	50
2003	721	295	236	159	26
2004	692	314	198	179	83
2005	686	357	253	142	79
2006	711	360	264	155	82
2007	802	347	247	161	103
2008	833	446	215	151	90
2009	759	455	274	138	69
2010	763	463	270	153	79
2011	657	578	244	162	70
2012	698	450	244	150	84

Undergraduates - Female



Male





Alumni

Alumni



Alumni

Total Living Alumni by College 2008-2012

College	2008		2009		2010		2011		2012	
	N	%	N	%	N	%	N	%	N	%
Sub-total Alumni***	99,940		105,056		107,208		109,285		110,837	
TOTAL living Alumni****	98,967		101,219		103,267		103,952^		106,842	
Business Administration	20,019	20.0	20,554	19.6	21,047	19.6	21,558	19.7	21,985	19.8
Education*	32,818	32.8	33,122	31.5	33,502	31.2	33,879	31.0	33,880	30.6
Humanities, Arts and Sciences	-	-	-	-	-	-	32,861	30.1	33,534	30.3
Social and Behavioral Sciences	16,619	16.6	16,643	15.8	17,089	15.9	17,558	16.1	17,940	16.2
College Unassigned**			3,284	3.1	3,363	3.1	3,429	3.1	3,498	3.2

Source: Alumni Association

*Includes Alumni earning only Teaching Certificates Awarded pre-1960.

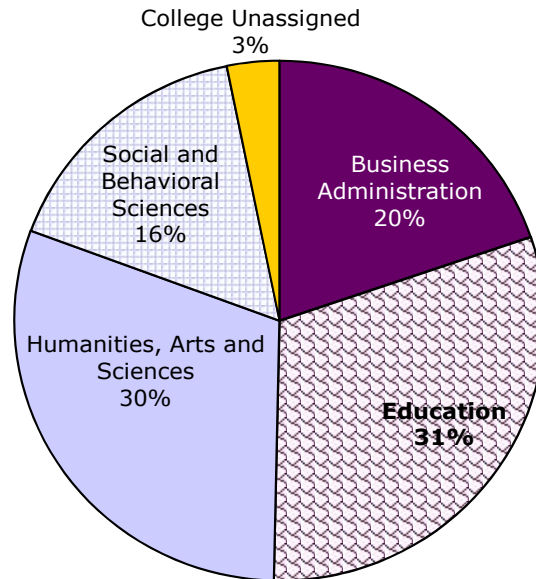
**Includes Individual Studies, General Studies and Liberal Studies majors + others

***Alumni having earned degrees in different colleges are counted in each college; alumni earning multiple degrees in the same college are counted only once for that college.

****Grads counted a single time even when earning multiple degree(s).

Updated 12-18-2012; includes grads thru Sum '12

Total Living Alumni by College



Alumni = 110,837

Alumni by State 2012*

State	Alumni	State	Alumni
Alabama	181	Montana	170
Alaska	138	Nebraska	1,660
Arizona	2,026	Nevada	359
Arkansas	298	New Hampshire	68
California	2,536	New Jersey	213
Colorado	2,596	New Mexico	247
Connecticut	136	New York	495
Delaware	41	North Carolina	656
Florida	1,686	North Dakota	108
Georgia	639	Ohio	616
Hawaii	155	Oklahoma	315
Idaho	156	Oregon	518
Illinois	3,959	Pennsylvania	359
Indiana	665	Rhode Island	34
Iowa	65,003	South Carolina	274
Kansas	1,406	South Dakota	518
Kentucky	218	Tennessee	462
Louisiana	123	Texas	3,143
Maine	46	Utah	122
Maryland	317	Vermont	30
Massachusetts	227	Virginia	695
Michigan	601	Washington	774
Minnesota	5,197	West Virginia	34
Mississippi	71	Wisconsin	2,237
Missouri	1,985	Wyoming	133
		District of Columbia	78

Source: Alumni Association

*As of December 2012

Alumni by Iowa County 2012

County	Alumni	County	Alumni	County	Alumni	County	Alumni
Adair	59	Decatur	37	Johnson	2,148	Pocahontas	109
Adams	26	Delaware	454	Jones	348	Polk	10,937
Allamakee	272	Des Moines	362	Keokuk	137	Pottawattamie	601
Appanoose	85	Dickinson	368	Kossuth	343	Poweshiek	386
Audubon	72	Dubuque	1,898	Lee	233	Ringgold	32
Benton	694	Emmet	108	Linn	6,030	Sac	158
Black Hawk	11,194	Fayette	542	Louisa	105	Scott	2,463
Boone	370	Floyd	547	Lucas	59	Shelby	94
Bremer	1,696	Franklin	247	Lyon	44	Sioux	156
Buchanan	929	Fremont	29	Madison	180	Story	1,336
Buena Vista	206	Greene	160	Mahaska	221	Tama	635
Butler	761	Grundy	833	Marion	396	Taylor	29
Calhoun	197	Guthrie	143	Marshall	914	Union	82
Carroll	423	Hamilton	338	Mills	82	Van Buren	44
Cass	130	Hancock	213	Mitchell	279	Wapello	330
Cedar	308	Hardin	618	Monona	53	Warren	832
Cerro Gordo	1,336	Harrison	85	Monroe	66	Washington	332
Cherokee	123	Henry	212	Montgomery	52	Wayne	32
Chickasaw	430	Howard	232	Muscatine	533	Webster	647
Clarke	57	Humboldt	230	O'Brien	149	Winnebago	285
Clay	279	Ida	87	Osceola	33	Winneshiek	523
Clayton	391	Iowa	267	Page	83	Woodbury	605
Clinton	607	Jackson	308	Palo Alto	180	Worth	182
Crawford	142	Jasper	511	Plymouth	239	Wright	288
Dallas	1,177	Jefferson	132				
Davis	53					TOTAL	65,003

Source: Alumni Association 12-18-2012

Post-Graduation Status of 2010-2011 and 2011-2012 Bachelor's Degree Recipients*

College	Graduates	No Information	Total Responding	Employed	Graduate Education	Undergrad Education
2010-2011						
Business	584	217	367	221	35	16
Education	538	225	313	254	25	21
Humanities & Fine Arts	580	272	308	196	31	10
Natural Sciences	388	174	214	118	51	6
Social & Behavioral Sciences	498	262	236	109	46	15
TOTAL	2,588	1,150	1,438	898	188	68
				(1,438 of 2,588)	(898 of 1,438)	(188 of 1,438)
				55.6%	62.4%	13.1%
2011-2012						
Business	551	135	416	335	88	0
Education	724	321	403	340	25	0
Humanities, Arts and Sciences	1001	361	640	438	35	0
Social & Behavioral Sciences	592	243	349	254	45	0
TOTAL	2,868	1,060	1,808	1,367	193	0
				(1,808 of 2,868)	(1,367 of 1,808)	(193 of 1,808)
				63.0%	75.6%	10.7%
					0.00%	

Source: Career Services

*Method: Data was collected through a survey of graduates attending commencement exercises and follow-up telephone calls.

Post-Graduation Status of 2010-11 and 2011-2012 Graduate Degree Recipients*

College	Graduates	No Information	Total Responding	Employed**	Continuing Education	Other
2010-2011						
Business	37	16	21	20	1	0
Education	115	40	75	65	5	3
Humanities & Fine Arts	91	38	53	46	6	0
Natural Sciences	34	8	26	23	3	0
Social & Behavioral Sciences	104	48	56	45	8	1
TOTAL	381	150	231	199	23	4
			(231 of 381)	(199 of 273)	(23 of 273)	(4 of 273)
			60.6%	86.1%	10.0%	1.7%
2011-2012						
Business	33	0	33	29	3	1
Education	81	5	76	69	4	3
Humanities, Arts and Sciences	97	2	95	76	13	5
Social & Behavioral Sciences	70	1	69	66	2	1
TOTAL	281	8	273	240	22	10
			(273 of 281)	(240 of 273)	(22 of 273)	(10 of 273)
			97.2%	87.9%	8.1%	3.7%

Source: CIO's Office and Institutional Research

*Method: Data was collected through a survey of graduates attending commencement exercises.

**89% of respondents Employed in Iowa

Undergraduate Plans for Further Education 2011-2012*

College	Completed Survey Item		Accepted to a Graduate/Professional Program		Currently Applying to Programs		Accepted to Another Undergraduate Program	
	N	%	N	%	N	%	N	%
TOTAL	1,731	100	234	100	191	100	24	100
Business Administration	363	20.97%	32	13.68%	18	9.42%	12	50.00%
Education	436	25.19%	37	15.81%	37	19.37%	4	16.67%
Humanities, Arts and Sciences	577	33.33%	114	48.72%	86	45.03%	4	16.67%
Social and Behavioral Sciences	347	20.05%	51	21.79%	49	25.65%	4	16.67%
			(234 of 1731)		(191 of 1731)		(24 of 1731)	
			13.52%		11.03%		1.39%	

Source: CIO's Office and Institutional Research

*December 2010 and May 2011 Graduating Senior Surveys

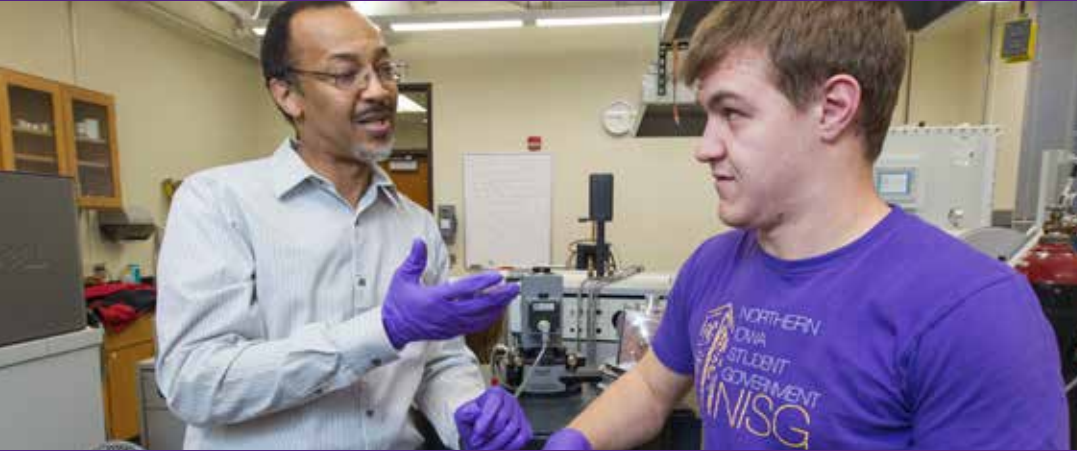
Graduate Plans for Further Education 2011-2012*

College	Completed Survey Item		Accepted to a Graduate/Professional Program		Currently Applying to Programs		No Definite Plans for Further Education	
	N	%	N	%	N	%	N	%
TOTAL	281	100.00%	19	6.76%	16	5.69%	182	64.77%
Business Administration	33	11.74%	2	10.53%	0	0.00%	26	14.29%
Education	81	28.83%	4	21.05%	2	12.50%	54	29.67%
Humanities, Arts and Sciences	97	34.52%	9	47.37%	12	75.00%	52	28.57%
Social and Behavioral Sciences	70	24.91%	4	21.05%	2	12.50%	50	27.47%
			(19 of 281)		(16 of 281)		(182 of 281)	
			6.8%		5.7%		64.8%	

Source: CIO's Office and Institutional Research

*December 2010 and May 2011 Graduate Program Surveys





Faculty & Staff

Fall 2012 Faculty Profile by College*

	Total University	Business	Education	Hum, Arts & Sciences	S&B Sciences	Cont Ed No Specific	Library
Faculty	788	78	182	352	135	23	18
Full-Time	602	66	142	261	108	9	16
Part-Time	186	12	40	91	27	14	2
Female	375	25	115	153	64	9	9
Male	413	53	67	199	71	14	9
American Indian/Alaskan Native	1	0	1	0	0	0	0
Asian/Pacific Islander	51	14	2	28	7	0	0
Black/African American	18	1	4	7	5	0	1
Hispanic/Latino	19	1	3	11	3	1	0
Native Hawaiian/Other Pacific Islander	1	0	0	1	0	0	0
Two or more races	8	2	1	4	1	0	0
White	690	60	171	301	119	22	17
Professors	194	21	32	99	39	1	2
Associate Professors	225	22	40	97	46	6	14
Assistant Professors	118	12	32	50	22	1	1
Instructors/Lecturers	251	23	78	106	28	15	1
Tenured	453	42	106	198	85	6	16
Tenure-Track	112	13	31	46	21	0	1
Non Tenure-Track	223	23	45	108	29	17	1

Source: CIO's Office and Institutional Research

*Includes Academic Department Heads and other Administrators with Faculty Rank but excludes Deans and above

Faculty by College 2007-2012

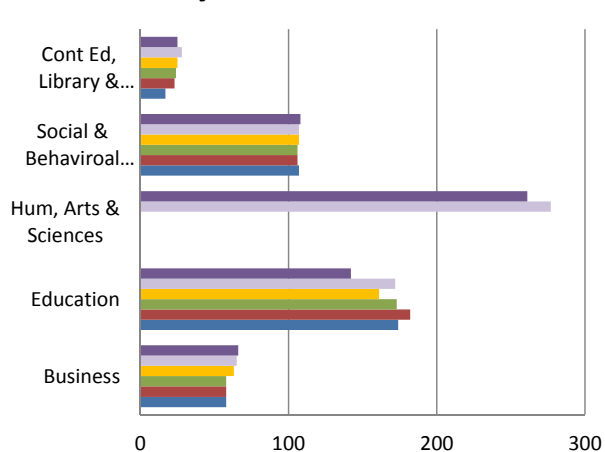
TOTAL

Business
Education
Humanities, Arts and Sciences
Social and Behavioral Sciences
Continuing Education, Library and No Specific

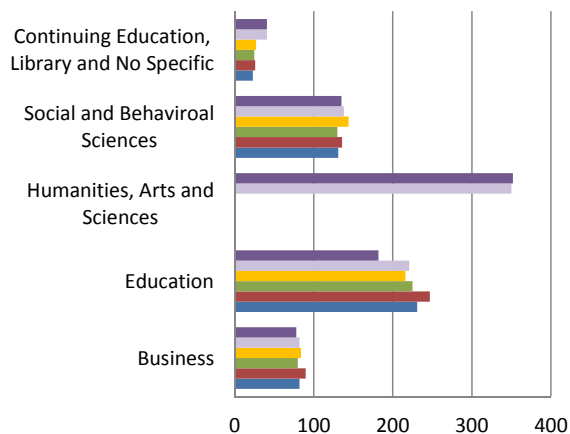
Full-Time					
2007	2008	2009	2010	2011	2012
621	639	632	623	649	602
58	58	58	63	65	66
174	182	173	161	172	142
-	-	-	-	277	261
107	106	106	107	107	108
17	23	24	25	28	25

Total Full-Time + Part-Time					
2007	2008	2009	2010	2011	2012
811	856	810	824	832	788
82	90	80	84	82	78
231	247	225	216	221	182
-	-	-	-	350	352
131	136	130	144	138	135
23	26	25	27	41	41

Faculty: Full-Time



Total



Source: CIO's Office and Institutional Research

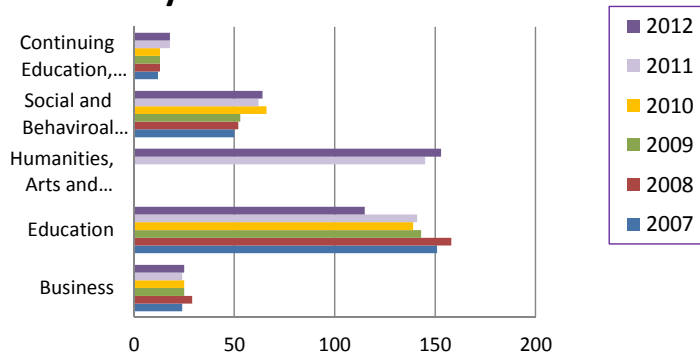
*Includes Academic Department Heads and other Administrators with Faculty Rank but excludes Deans and above

Faculty by College and Gender 2007-2012*

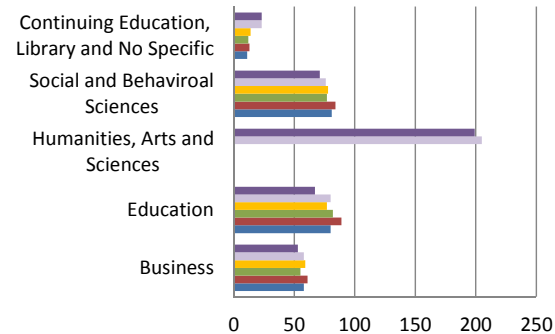
	Female					
	2007	2008	2009	2010	2011	2012
TOTAL	373	399	379	388	390	375
Business	24	29	25	25	24	25
Education	151	158	143	139	141	115
Humanities, Arts and Sciences	-	-	-	-	145	153
Social and Behavioral Sciences	50	52	53	66	62	64
Continuing Education, Library and No Specific	12	13	13	13	18	18

	Male					
	2007	2008	2009	2010	2011	2012
TOTAL	438	457	431	436	442	413
Business	58	61	55	59	58	53
Education	80	89	82	77	80	67
Humanities, Arts and Sciences	-	-	-	-	205	199
Social and Behavioral Sciences	81	84	77	78	76	71
Continuing Education, Library and No Specific	11	13	12	14	23	23

Faculty: Female



Male



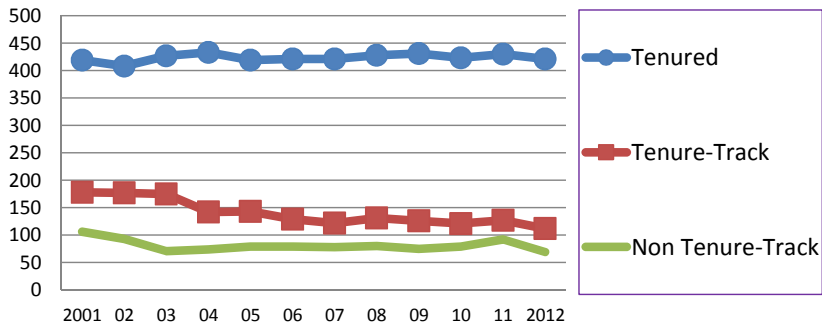
Source: CIO's Office and Institutional Research

*Includes Academic Department Heads and other Administrators with Faculty Rank but excludes Deans and above

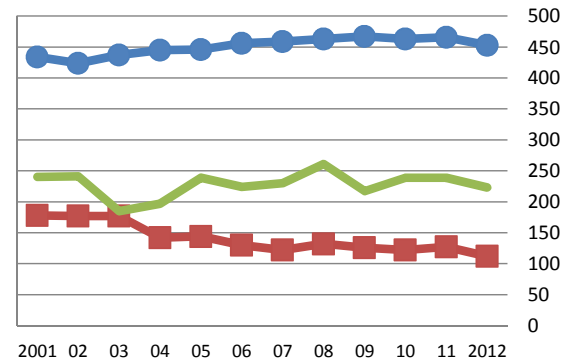
Faculty by Tenure Status 2001-2012*

Fall Semester	Tenured		Tenure-Track		Non Tenure-Track	
	Full-Time	Part-Time	Full-Time	Part-Time	Full-Time	Part-Time
2001	419	15	178	0	106	134
2002	408	16	177	0	93	148
2003	427	10	175	2	71	114
2004	433	12	142	0	74	123
2005	419	27	143	1	79	160
2006	421	35	129	1	79	145
2007	421	38	122	0	78	152
2008	428	35	131	1	80	181
2009	431	36	126	0	75	142
2010	423	40	121	1	79	160
2011	430	36	127	0	92	147
2012	421	32	112	0	69	154

Faculty: Full-Time



Total



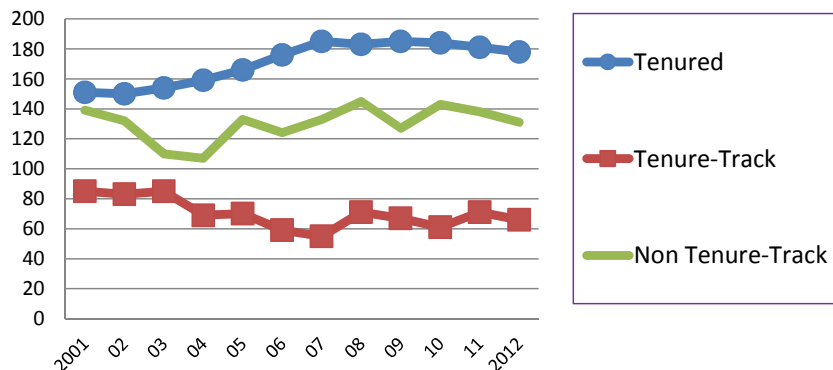
Source: CIO's Office and Institutional Research

*Includes Academic Department Heads and other Administrators with Faculty Rank but excludes Deans and above

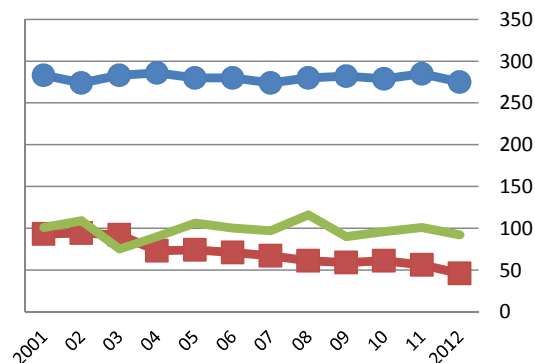
Faculty Tenure Status by Gender 2001-2012*

Fall Semester	Tenured		Tenure-Track		Non Tenure-Track	
	Female	Male	Female	Male	Female	Male
2001	151	283	85	93	139	101
2002	150	274	83	94	132	109
2003	154	283	85	92	110	75
2004	159	286	69	73	107	90
2005	166	280	70	74	133	106
2006	176	280	59	71	124	100
2007	185	274	55	67	133	97
2008	183	280	71	61	145	116
2009	185	282	67	59	127	90
2010	184	279	61	61	143	96
2011	181	285	71	56	138	101
2012	178	275	66	46	131	92

Faculty: Female



Male



Source: CIO's Office and Institutional Research

*Includes Academic Department Heads and other Administrators with Faculty Rank but excludes Deans and above

Fall 2012 Faculty by Tenure Status and Minority

	Total University	Business	Education	Hum, Arts & Sciences	S&B Sciences	No Specific	Library
TOTAL	788	78	182	352	135	23	18
Tenured	453	42	106	198	85	6	16
American Indian/Alaskan Native	1		1				
Asian	35	9	1	21	4		
Black/African American	12		2	6	3		1
Hispanic	8		1	6	1		
Native Hawaiian/Pacific Islander	1			1			
White	392	33	101	161	76	6	15
Two or more races	4			3	1		
Tenure-Track	112	13	31	46	21	0	1
American Indian/Alaskan Native	0						
Asian	10	4	1	3	2		
Black/African American	5	1	1	2	1		
Hispanic	4	1	2		1		
Native Hawaiian/Pacific Islander	0						
White	93	7	27	41	17		1
Two or more races	0						
Non Tenure-Track	223	23	45	108	29	17	1
American Indian/Alaskan Native	0						
Asian	6	1		4	1		
Black/African American	3		1	1	1		
Hispanic	5			3	1	1	
Native Hawaiian/Pacific Islander	0						
White	205	20	43	99	26	16	1
Two or more races	4	2	1	1			

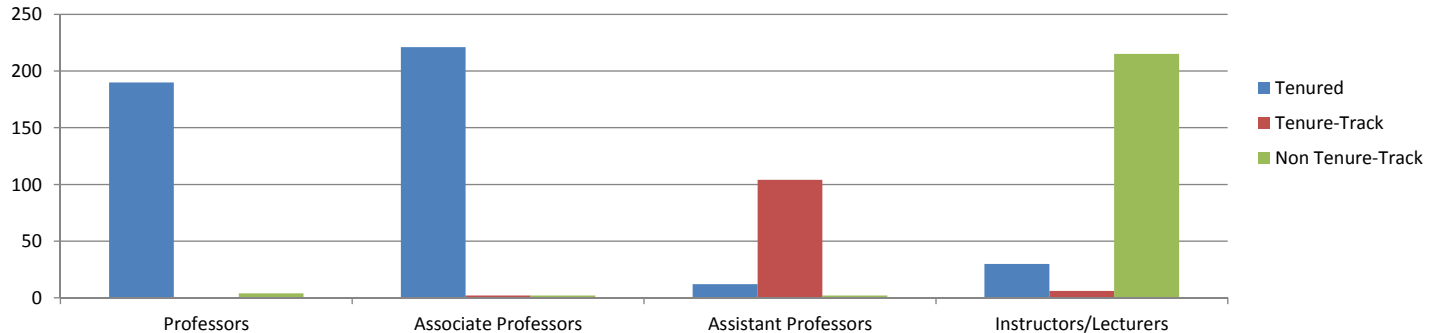
Source: CIO's Office and Institutional Research

*Includes Academic Department Heads and other Administrators with Faculty Rank but excludes Deans and above

Faculty Tenure Status by Rank 2001-2012*

	Tenured				Tenure-Track				Non Tenure-Track			
	Professors	Associate Professors	Assistant Professors	Instructors/Lecturers	Professors	Associate Professors	Assistant Professors	Instructors/Lecturers	Professors	Associate Professors	Assistant Professors	Instructors/Lecturers
2001	180	197	29	28	0	8	143	27	4	1	10	207
2002	180	191	25	28	0	7	143	27	5	1	10	225
2003	180	205	24	28	0	6	150	21	4	0	5	176
2004	184	215	18	28	0	4	122	16	4	0	6	187
2005	187	213	17	29	0	2	126	16	4	0	4	231
2006	188	217	14	37	0	2	116	12	4	0	6	214
2007	181	225	12	41	0	1	109	12	4	0	6	220
2008	188	222	12	41	0	1	117	14	5	0	6	250
2009	199	217	12	39	0	4	112	10	5	0	3	209
2010	196	218	12	37	0	4	107	11	2	1	3	233
2011	197	224	11	34	0	3	113	11	2	2	5	230
2012	190	221	12	30	0	2	104	6	4	2	2	215

Fall 2012 Faculty Tenure Status by Rank



Source: CIO's Office and Institutional Research

*Includes Academic Department Heads and other Administrators with Faculty Rank but excludes Deans and above

Faculty by College and Tenure Status 2007-2012

Fall Semester	Total University	Business	Education	Humanities, Arts and Sciences	Social and Behavioral Sciences	Continuing Ed No Specific and Library
2007						
Tenured	459	40	129	-	77	19
Tenure-Track	122	10	30	-	24	3
Non Tenure-Track	230	32	72	-	30	1
2008						
Tenured	463	41	134	-	79	19
Tenure-Track	132	9	32	-	22	3
Non Tenure-Track	261	40	81	-	35	4
2009						
Tenured	467	45	131	-	80	20
Tenure-Track	126	8	27	-	24	3
Non Tenure-Track	217	27	67	-	26	2
2010						
Tenured	463	46	119	-	85	21
Tenure-Track	122	11	27	-	26	3
Non Tenure-Track	239	27	70	-	33	3
2011						
Tenured	466	46	112	200	89	19
Tenure-Track	127	14	37	53	20	3
Non Tenure-Track	239	22	72	97	29	19
2012						
Tenured	463	42	106	198	85	22
Tenure-Track	122	13	31	46	21	1
Non Tenure-Track	239	23	45	108	29	18

Source: CIO's Office and Institutional Research

*Includes Academic Department Heads and other Administrators with Faculty Rank but excludes Deans and above

Faculty by College, Gender and Tenure Status 2008-2012

College	Full-Time										Part-Time										Total				
	08	09	10	11	12	08	09	10	11	12	08	09	10	11	12	08	09	10	11	12	08	09	10	11	12
	F	F	F	F	F	M	M	M	M	M	F	F	F	F	F	M	M	M	M	M					
Faculty	285	283	270	287	271	354	349	353	362	331	114	96	118	103	104	103	82	83	80	82	856	810	824	832	788
Tenured	167	168	164	165	165	261	263	259	265	256	16	17	20	16	13	19	19	20	20	19	463	467	463	466	453
Tenure-Track	70	67	60	71	66	61	59	61	56	46	1	0	1	0	0	0	0	0	0	0	132	126	122	127	112
Non Tenure-Track	48	48	46	51	40	32	27	33	41	29	97	79	97	87	91	84	63	63	60	63	261	217	239	239	223
Business Administration	17	18	18	18	18	41	40	45	47	48	12	7	7	6	7	20	15	14	11	5	90	80	84	82	78
Tenured	9	10	10	10	9	30	33	34	32	32	1	1	1	1	0	1	1	1	3	1	41	45	46	46	42
Tenure-Track	2	3	3	4	4	7	5	8	10	9	0	0	0	0	0	0	0	0	0	0	9	8	11	14	13
Non Tenure-Track	6	5	5	4	5	4	2	3	5	7	11	6	6	5	7	19	14	13	8	4	40	27	27	22	23
Education	115	107	99	106	91	67	66	62	66	51	43	36	40	35	24	22	16	15	14	16	247	225	216	221	182
Tenured	65	64	59	56	57	51	49	41	41	37	12	13	12	8	5	6	5	7	7	7	134	131	119	112	106
Tenure-Track	27	23	19	27	22	4	4	7	10	9	1	0	1	0	0	0	0	0	0	0	32	27	27	37	31
Non Tenure-Track	23	20	21	23	12	12	13	14	15	5	30	23	27	27	19	16	11	8	7	9	81	67	70	72	45
Humanities, Arts and Sciences	0	0	0	107	104	0	0	0	170	157	0	0	0	38	49	0	0	0	35	42	0	0	0	350	352
Tenured	-	-	-	63	60	-	-	-	127	122	-	-	-	3	6	-	-	-	7	10	-	-	-	200	198
Tenure-Track	-	-	-	23	24	-	-	-	30	22	-	-	-	0	0	-	-	-	0	0	-	-	-	53	46
Non Tenure-Track	-	-	-	21	20	-	-	-	13	13	-	-	-	35	43	-	-	-	28	32	-	-	-	97	108

Faculty by College, Gender and Tenure Status 2008-2012* (Continued)

College	Full-Time										Part-Time										Total				
	08	09	10	11	12	08	09	10	11	12	08	09	10	11	12	08	09	10	11	12	08	09	10	11	12
	F	F	F	F	F	M	M	M	M	M	F	F	F	F	F	M	M	M	M	M					
Social and Behavioral Sciences	39	41	44	45	46	67	65	63	62	62	13	12	22	17	18	17	12	15	14	9	136	130	143	138	135
Tenured	25	25	26	28	29	52	53	54	55	54	0	1	3	4	2	2	1	2	2	0	79	80	86	89	85
Tenure-Track	12	14	17	15	15	10	10	9	5	6	0	0	0	0	0	0	0	0	0	0	22	24	22	20	21
Non Tenure-Track	2	2	1	2	2	5	2	0	2	2	13	11	19	13	16	15	11	13	12	9	35	26	35	29	29
Continuing Ed & Special Programs	0	0	0	1	0	0	0	0	3	0	0	0	0	7	0	0	0	0	5	0	0	0	3	16	0
Tenured	0	0	0	0	0	0	0	0	0	0	0	0	0	0	0	0	0	0	0	0	0	0	0	0	0
Tenure-Track	0	0	0	0	0	0	0	0	0	0	0	0	0	0	0	0	0	0	0	0	0	0	0	0	0
Non Tenure-Track	0	0	0	1	0	0	0	0	3	0	0	0	0	7	0	0	0	0	5	0	0	0	3	16	0
No Specific College	2	3	3	2	3	4	4	6	5	6	1	0	1	0	6	0	0	0	0	8	7	7	9	7	23
Tenured	1	2	2	2	2	4	4	5	4	4	0	0	0	0	0	0	0	0	0	0	5	6	6	6	6
Tenure-Track	0	0	0	0	0	0	0	0	0	0	0	0	0	0	0	0	0	0	0	0	0	0	0	0	0
Non Tenure-Track	1	1	1	0	1	0	0	1	1	2	1	0	1	0	6	0	0	0	0	8	2	1	3	1	17
Library	10	10	9	8	9	7	7	7	9	7	0	0	0	0	0	2	1	1	1	2	19	18	19	18	18
Tenured	7	7	7	6	8	6	6	6	6	7	0	0	0	0	0	1	1	1	1	1	14	14	14	13	16
Tenure-Track	2	2	2	2	1	1	1	1	1	0	0	0	0	0	0	0	0	0	0	0	3	3	3	3	1
Non Tenure-Track	1	1	0	0	0	0	0	0	2	0	0	0	0	0	0	1	0	0	0	1	2	1	2	2	1

Source: CIO's Office and Institutional Research

*Includes Academic Department Heads and other Administrators with Faculty Rank but excludes Deans and above

Faculty by College and Rank 2007-2012*

Fall Semester	Total University	Business	Education	Humanities, Arts and Sciences	Social and Behavioral Sciences	Continuing Ed No Specific and Library
2007						
Professors	185	18	32	-	32	6
Associate Professors	226	22	51	-	45	12
Assistant Professors	127	12	29	-	27	2
Instructors/Lecturers	273	30	119	-	27	3
2008						
Professors	193	19	37	-	35	4
Associate Professors	223	22	49	-	45	15
Assistant Professors	135	10	30	-	23	4
Instructors/Lecturers	305	39	131	-	33	3
2009						
Professors	204	22	38	-	35	4
Associate Professors	221	24	50	-	46	16
Assistant Professors	127	8	25	-	24	4
Instructors/Lecturers	258	26	112	-	25	1
2010						
Professors	198	23	33	-	37	3
Associate Professors	223	25	45	-	48	18
Assistant Professors	122	9	26	-	26	3
Instructors/Lecturers	281	27	112	-	33	3
2011						
Professors	199	24	31	99	42	3
Associate Professors	229	24	43	98	47	17
Assistant Professors	129	12	34	58	20	5
Instructors/Lecturers	275	22	113	95	29	16
2012						
Professors	194	21	32	99	39	3
Associate Professors	225	22	40	97	46	20
Assistant Professors	118	12	32	50	22	2
Instructors/Lecturers	251	23	78	106	28	16

Source: CIO's Office and Institutional Research

*Includes Academic Department Heads and other Administrators with Faculty Rank but excludes Deans and above

Faculty by College, Gender and Rank 2008-2012

College	Full-Time										Part-Time										Total				
	08	09	10	11	12	08	09	10	11	12	08	09	10	11	12	08	09	10	11	12	08	09	10	11	12
	F	F	F	F	F	M	M	M	M	M	F	F	F	F	F	M	M	M	M	M					
Faculty	285	283	270	287	281	354	349	353	362	353	114	96	118	103	118	103	82	83	80	83	856	810	824	832	788
Professors	45	45	37	41	48	125	137	136	136	136	10	10	13	8	13	13	12	12	14	12	193	204	198	199	194
Associate Professors	92	95	98	97	98	123	115	113	118	113	3	5	5	7	5	5	6	7	7	7	223	221	223	229	225
Assistant Professors	63	61	56	66	56	68	62	64	62	64	2	2	0	0	0	2	2	2	1	2	135	127	122	129	118
Instructors/Lecturers	85	82	79	83	79	38	35	40	46	40	99	79	100	88	100	83	62	62	58	62	305	258	281	275	251
Business Administration	17	18	18	18	18	41	40	45	47	48	12	7	7	6	7	20	15	14	11	5	90	80	84	82	78
Professors	1	2	2	2	2	17	19	20	19	18	1	1	1	1	0	0	0	0	2	1	19	22	23	24	21
Associate Professors	8	8	8	8	7	14	16	17	15	15	0	0	0	0	0	0	0	0	1	0	22	24	25	24	22
Assistant Professors	2	3	3	3	4	6	3	4	8	8	0	0	0	0	0	2	2	2	1	0	10	8	9	12	12
Instructors/Lecturers	6	5	5	5	5	4	2	4	5	7	11	6	6	5	7	18	13	12	7	4	39	26	27	22	23
Education	115	107	99	106	91	67	66	62	66	51	43	36	40	35	24	22	16	15	14	16	247	225	216	221	182
Professors	12	9	8	8	11	19	21	17	16	14	6	7	6	4	4	0	1	2	3	3	37	38	33	31	32
Associate Professors	23	27	24	23	23	20	17	14	15	13	3	4	4	3	1	3	2	3	2	3	49	50	45	43	40
Assistant Professors	22	18	16	22	21	7	6	10	12	11	1	1	0	0	0	0	0	0	0	0	30	25	26	34	32
Instructors/Lecturers	58	53	51	53	36	21	22	21	23	13	33	24	30	28	19	19	13	10	9	10	131	112	112	113	78
Humanities, Arts and Sciences	0	0	0	107	104	0	0	0	170	157	0	0	0	38	49	0	0	0	35	42	0	0	0	350	352
Professors	-	-	-	20	23	-	-	-	72	64	-	-	-	1	2	-	-	-	6	10	-	-	-	99	99
Associate Professors	-	-	-	41	35	-	-	-	52	55	-	-	-	2	4	-	-	-	3	3	-	-	-	98	97
Assistant Professors	-	-	-	24	25	-	-	-	34	25	-	-	-	0	0	-	-	-	0	0	-	-	-	58	50
Instructors/Lecturers	-	-	-	22	21	-	-	-	12	13	-	-	-	35	43	-	-	-	26	29	-	-	-	95	106

Faculty by College, Gender and Rank 2008-2012* (Continued)

College	Full-Time										Part-Time										Total				
	08 F	09 F	10 F	11 F	12 F	08 M	09 M	10 M	11 M	12 M	08 F	09 F	10 F	11 F	12 F	07 M	09 M	10 M	11 M	12 M	08	09	10	11	12
Social and Behavioral Sciences	39	41	44	45	46	67	65	63	62	62	13	12	22	17	18	10	12	15	14	9	136	130	144	138	135
Professors	8	9	7	11	12	25	25	27	27	26	0	0	2	2	1	1	1	1	2	0	35	35	37	42	39
Associate Professors	17	16	19	17	17	28	29	27	28	28	0	1	1	2	1	1	0	1	0	0	45	46	48	47	46
Assistant Professors	11	14	17	15	15	12	10	9	5	6	0	0	0	0	1	0	0	0	0	0	23	24	26	20	22
Instructors/Lecturers	3	2	1	2	2	2	1	0	2	2	13	11	19	13	15	8	11	13	12	9	33	25	33	29	28
Continuing Ed & Special Programs	0	0	0	1	1	0	0	0	3	2	0	0	0	7	6	0	0	0	5	8	0	0	0	16	17
Professors	0	0	0	0	0	0	0	0	0	0	0	0	0	0	0	0	0	0	1	1	0	0	0	1	1
Associate Professors	0	0	0	0	0	0	0	0	0	0	0	0	0	0	0	0	0	0	0	1	0	0	0	0	1
Assistant Professors	0	0	0	0	0	0	0	0	0	0	0	0	0	0	0	0	0	0	0	0	0	0	0	0	0
Instructors/Lecturers	0	0	0	1	1	0	0	0	3	2	0	0	0	7	6	0	0	0	4	6	0	0	0	15	15
No Specific	2	3	3	2	2	4	4	6	5	4	1	0	1	0	0	2	0	0	0	0	7	7	10	7	6
Professors	2	2	1	0	0	0	0	0	0	0	0	0	0	0	0	0	0	0	0	0	2	2	1	0	0
Associate Professors	0	1	1	2	2	3	3	5	4	3	0	0	0	0	0	1	0	0	0	0	3	4	6	6	5
Assistant Professors	0	0	0	0	0	1	1	1	1	1	0	0	0	0	0	1	0	0	0	0	1	1	1	1	1
Instructors/Lecturers	0	0	1	0	0	0	0	0	0	0	1	0	1	0	0	0	0	0	0	0	1	0	2	0	0
Library	10	10	9	8	9	7	7	7	9	7	0	0	0	0	0	1	1	1	1	2	19	18	17	18	18
Professors	0	0	0	0	0	2	2	2	2	2	0	0	0	0	0	0	0	0	0	0	2	2	2	2	2
Associate Professors	7	7	7	6	8	4	4	4	4	5	0	0	0	0	0	1	1	1	1	1	12	12	12	11	14
Assistant Professors	2	2	1	2	1	1	1	1	2	0	0	0	0	0	0	0	0	0	0	0	3	3	2	4	1
Instructors/Lecturers	1	1	1	0	0	0	0	0	1	0	0	0	0	0	0	0	0	0	0	1	2	1	1	1	1

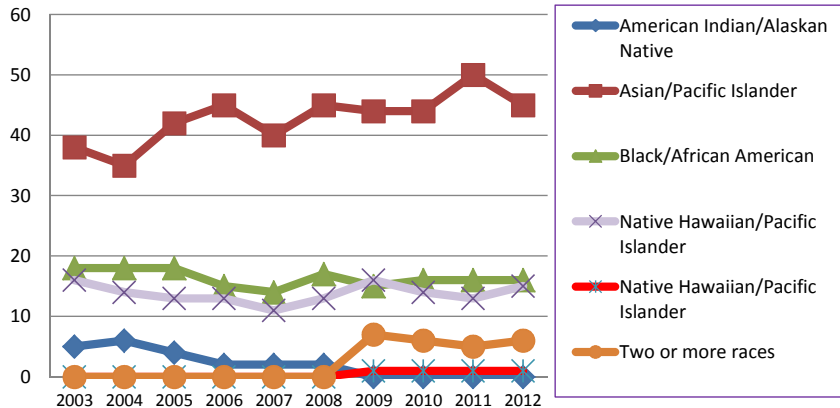
Source: CIO's Office and Institutional Research

*Includes Academic Department Heads and other Administrators with Faculty Rank but excludes Deans and above

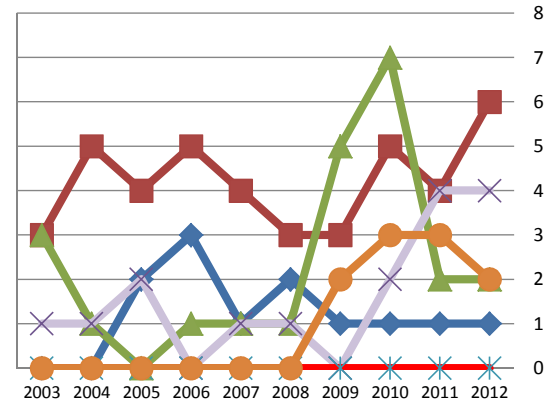
Minority Faculty By Race/Ethnicity 2003-2012

	Full-Time										Part-Time									
	2003	2004	2005	2006	2007	2008	2009	2010	2011	2012	2003	2004	2005	2006	2007	2008	2009	2010	2011	2012
Total	77	73	77	75	67	77	83	81	85	83	7	7	8	9	7	7	11	18	14	15
American Indian/Alaskan Native	5	6	4	2	2	2	0	0	0	0	0	0	2	3	1	2	1	1	1	1
Asian/Pacific Islander	38	35	42	45	40	45	44	44	50	45	3	5	4	5	4	3	3	5	4	6
Black/African American	18	18	18	15	14	17	15	16	16	16	3	1	0	1	1	1	5	7	2	2
Hispanic/Latino	16	14	13	13	11	13	16	14	13	15	1	1	2	0	1	1	0	2	4	4
Native Hawaiian/Pacific Islander	-	-	-	-	-	-	1	1	1	1	-	-	-	-	-	-	0	0	0	0
Two or more races	-	-	-	-	-	-	7	6	5	6	-	-	-	-	-	-	2	3	3	2

Minority Faculty: Full-Time



Part-Time



Source: CIO's Office and Institutional Research

*Excludes Deans and above

NOTE: The Race/Ethnicity reporting was changed in Fall 2009 semester to implement the new U.S. Department of Education guidelines.

UNI Workforce by Employment Categories 2002-2012

Categories	2002 N	2003 N	2004 N	2005 N	2006 N	2007 N	2008 N	2009 N	2010 N	2011 N	2012 N	5 Yr % Change	10 Yr % Change
Total Workforce**	1,823	1,820	1,769	1,776	1,781	1,791	1,890	1,883	1,842	1,894	1,801	0.6	-1.2
Annual Percent Change	-1.9	-0.2	-2.8	0.4	0.3	0.6	5.5	-0.4	-2.2	2.8	-4.9		
Executive/Managerial	97	99	98	92	94	102	110	112	98	94	95	-6.9	-2.1
Faculty-Tenure/Tenure-Track*	549	561	533	547	542	536	550	546	546	552	519	-3.2	-5.5
Faculty-Term/Renewable Term	-	-	-	-	-	-	40	40	41	63	37	-	-
Professional/Scientific	504	513	509	521	529	541	570	577	578	603	592	9.4	17.5
Secretarial/Clerical	323	307	293	285	281	277	275	272	256	264	254	-8.3	-21.4
Technical/Paraprofessional	26	25	25	33	31	31	30	27	24	22	20	-35.5	-23.1
Skilled Crafts	85	77	78	68	68	64	63	60	55	55	56	-12.5	-34.1
Service/Maintenance	239	238	233	230	236	240	252	249	244	241	228	-5.0	-4.6

Source: Office of Human Resource Services

**Excludes temporary and second appointments

*Excludes some faculty with administrative appointments

NOTE: 2008-2012 data modified to include/separate Faculty-Term/Renewable Term employment category.

UNI Workforce Headcount and FTE by Employment Categories 2008-2012

Categories	2008		2009		2010		2011		2012	
	N	FTE	N	FTE	N	FTE	N	FTE	N	FTE
Total Workforce**	1,890	1,806.8	1,883	1,802.9	1,842	1,754.2	1,894	1,804.5	1,801	1,723.5
Annual Percent Change				-0.2		-2.7		2.9		-4.5
Executive/Managerial	110	109.3	112	111.7	98	97.8	94	93.5	95	93.6
Faculty -Tenure/Tenure-Track*	550	530.2	546	526.0	546	520.9	552	533.3	519	504.1
Faculty -Term/Renewable Term*	40	38.5	40	38.4	41	39.5	63	61.3	37	36.0
Professional/Scientific	570	541.8	577	551.9	578	549.4	603	566.9	592	559.5
Secretarial/Clerical	275	255.6	272	252.4	256	240.4	264	249.8	254	241.8
Technical/Paraprofessional	30	29.2	27	26.5	24	23.5	22	21.6	20	19.6
Skilled Crafts	63	63.0	60	60.0	55	55.0	55	54.7	56	55.7
Service/Maintenance	252	239.2	249	236.0	244	227.7	241	223.4	228	213.2

Source: Office of Human Resource Services

**Excludes temporary

*Excludes some faculty with administrative appointments

UNI Temporary Workforce Headcount and FTE by Employment Categories 2008-2012

Categories	2008		2009		2010		2011		2012	
	N	FTE	N	FTE	N	FTE	N	FTE	N	FTE
Total Temporary Workforce**	360	188.4	367	174.5	418	198.3	378	184.2	365	189.6
Executive/Managerial	1	0.3	0	0.0	0	0.0	0	0.0	0	0.0
Faculty -Tenure/Tenure-Track*	235	131.6	189	105.5	214	118.4	193	108.5	200	118.1
Professional/Scientific	69	37.8	80	49.2	102	59.1	94	58.0	74	49.2
Merit Temporary Total**	55	18.7	98	19.8	102	20.8	91	17.7	91	22.3
<i>Merit Temporary</i>					102	20.8	91	17.7	91	22.3
Secretarial/Clerical					12	4.4	3	1.6	7	3.3
Technical/Paraprofessional					5	3.8	1	0.2	0	0.0
Skilled Crafts					0	0.0	0	0.0	0	0.0
Service/Maintenance					85	12.6	87	15.9	84	19.0

Source: Office of Human Resource Services

*Excludes some faculty with administrative appointments

**Prior to 2010 all temporary Merit positions were classified as "Merit Temporary"

UNI Workforce by Race/Ethnicity 2006-2012

Categories	2006		2007		2008		2009		2010		2011		2012	
	N	%	N	%	N	%	N	%	N	%	N	%	N	%
Total Workforce**	1,781		1,791		1,850		1,846		1,811		1,894		1,801	
Annual Percent Change		0.3		0.6		3.3		-0.2		-1.9		4.6		-4.9
American Indian/Alaskan Native	7	0.4	7	0.4	7	0.4	5	0.3	3	0.2	3	0.2	3	0.2
Asian/ <i>Pacific Islander</i>	57	3.2	52	2.9	54	2.9	54	2.9	57	3.1	62	3.3	59	3.3
Black/African American	81	4.5	77	4.3	79	4.3	75	4.1	79	4.4	83	4.4	83	4.6
Hispanic/ <i>Latino</i>	24	1.3	26	1.5	30	1.6	32	1.7	34	1.9	35	1.8	37	2.1
White	1,612	90.5	1,629	91.0	1,680	90.8	1,669	90.4	1,627	89.8	1,701	89.8	1,610	89.4
Native Hawaiian/Pacific Islander	-		-		-		1	0.1	1	0.1	1	0.1	1	0.1
Two or more	-		-		-		10	0.5	10	0.6	9	0.5	8	0.4
Unknown	0	0.0	0	0.0	0	0.0	0	0.0	0	0.0	0	0.0	0	0.0

Source: Office of Human Resource Services

**Excludes temporary and second appointments

NOTE: Fall 2009 semester Race/Ethnicity reporting was changed to implement the U.S. Department of Education guidelines.

UNI Workforce by Employment Categories and Race/Ethnicity Fall 2012

Fall 2012	American Indian/ Alaskan Native	Asian	Black/ African American	Hispanic	White	Native Hawaiian/ Pacific Islander	Two or more	Total
Total Workforce**	3	59	83	37	1,610	1	0	1,801
Executive/Managerial	0	2	6	0	87	0	0	95
Faculty-Tenure/Tenure-Track*	1	44	13	14	442	1	4	519
Faculty-Term/Renewable Term*	0	1	1	0	35	0	0	37
Professional/Scientific	1	6	29	16	536	0	4	592
Secretarial/Clerical	0	1	11	2	240	0	0	254
Technical/Paraprofessional	0	0	2	1	17	0	0	20
Skilled Crafts	0	1	1	0	54	0	0	56
Service/Maintenance	1	4	20	4	199	0	0	228

Source: Office of Human Resource Services

**Excludes temporary and second appointments

*Excludes some faculty with administrative appointments

Fall 2012 UNI Workforce Headcount and FTE by Employment Categories and College

	Total University		Business		Education		Humanities, Arts and Sciences		Social and Behavioral Sciences		No specific College	
	N	FTE	N	FTE	N	FTE	N	FTE	N	FTE	N	FTE
Total Workforce**	1,801	1,723.5	118	115.5	239	225.1	363	346.3	138	134.4	943	902.2
Executive/ Managerial	95	93.6	9	9.0	7	7.0	19	19.0	9	8.9	51	49.7
Faculty-Tenure/ Tenure-Track*	519	504.1	48	47.5	129	124.7	229	220.1	98	97.3	15	14.5
Faculty-Term/ Renewable Term*	37	36.0	8	8.0	13	13.0	15	14.0	1	1.0	0	0.0
Professional/ Scientific	592	559.5	40	38.2	57	49.7	63	57.2	13	12.1	419	402.3
Secretarial/ Clerical	254	241.8	11	10.8	31	28.8	32	31.2	17	15.1	163	155.9
Technical/ Paraprofessional	20	19.6	2	2.0	1	0.9	3	2.8	0	0.0	14	13.9
Skilled Crafts	56	55.7	0	0.0	0	0.0	0	0.0	0	0.0	56	55.7
Service/ Maintenance	228	213.2	0	0.0	1	1.0	2	2.0	0	0.0	225	210.2

Source: Office of Human Resource Services

**Excludes temporary

*Excludes some faculty with administrative appointments

UNI Workforce by Employment Categories, Gender and College Fall 2012

Fall 2012	Total University		Business		Education		Humanities, Arts and Sciences		Social and Behavioral Sciences		No specific College	
	F	M	F	M	F	M	F	M	F	M	F	M
Total Workforce**	1,010	791	47	71	168	71	168	195	70	68	557	386
Executive/ Managerial	41	54	4	5	3	4	3	16	4	5	27	24
Faculty-Tenure/ Tenure-Track*	226	293	9	39	80	49	88	141	43	55	6	9
Faculty-Term/ Renewable Term	24	13	4	4	9	4	10	5	1	0	0	0
Professional/ Scientific	344	248	19	21	45	12	35	28	6	7	239	180
Secretarial/ Clerical	248	6	11	0	30	1	32	0	16	1	159	4
Technical/ Paraprofessional	5	15	0	2	1	0	0	3	0	0	4	10
Skilled Crafts	4	52	0	0	0	0	0	0	0	0	4	52
Service/ Maintenance	118	110	0	0	0	1	0	2	0	0	118	107

Source: Office of Human Resource Services

**Excludes temporary and second appointments

*Excludes some faculty with administrative appointments

UNI Workforce by Employment Categories, Level and College Fall 2012

Fall 2012	Total University		Business		Education		Humanities, Arts and Sciences		Social and Behavioral Sciences		No specific College	
	F-T	P-T	F-T	P-T	F-T	P-T	F-T	P-T	F-T	P-T	F-T	P-T
Total Workforce**	1,669	132	112	6	214	25	327	36	130	8	886	57
Executive/ Managerial	92	3	9	0	7	0	19	0	9	0	48	3
Faculty-Tenure/ Tenure-Track*	485	34	47	1	117	12	211	18	96	2	14	1
Faculty-Term/ Renewable Term*	36	1	8	0	13	0	14	1	1	0	0	0
Professional/ Scientific	546	46	36	4	49	8	51	12	12	1	398	21
Secretarial/ Clerical	220	34	10	1	26	5	28	4	12	5	144	19
Technical/ Paraprofessional	19	1	2	0	1	0	2	1	0	0	14	0
Skilled Crafts	55	1	0	0	0	0	0	0	0	0	55	1
Service/ Maintenance	216	12	0	0	1	0	2	0	0	0	213	12

Source: Office of Human Resource Services

**Excludes temporary and second appointments

*Excludes some faculty with administrative appointments

UNI Workforce by Employment Categories, Level and Gender Fall 2012

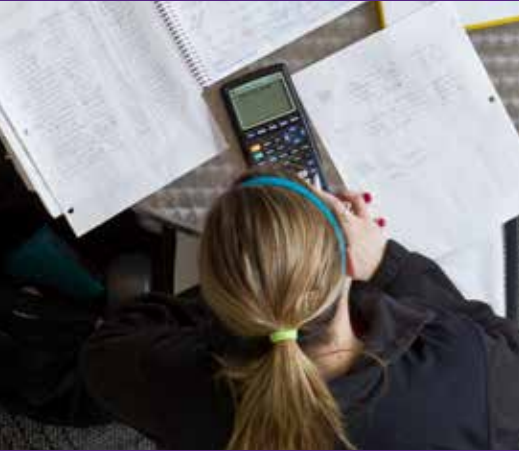
Fall 2012	Total University		Female		Male	
	F-T	P-T	F-T	P-T	F-T	P-T
Total Workforce**	1,669	132	916	94	753	38
Executive/ Managerial	92	3	40	1	52	2
Faculty-Tenure/ Tenure-Track*	485	34	212	14	273	20
Faculty-Term/ Renewable Term*	36	1	24	0	12	1
Professional/ Scientific	546	46	306	38	240	8
Secretarial/ Clerical	220	34	215	33	5	1
Technical/ Paraprofessional	19	1	5	0	14	1
Skilled Crafts	55	1	4	0	51	1
Service/ Maintenance	216	12	110	8	106	4

Source: Office of Human Resource Services

**Excludes temporary and second appointments

*Excludes some faculty with administrative appointments





Budget & Finance

Statement of Revenues, Expenses and Changes In Net Assets, 2007-2012

	2007	2008	2009	2010	2011	2012
OPERATING REVENUES						
Tuition & Fees	\$70,720,879	\$73,394,127	\$77,260,450	\$81,866,942	\$87,554,233	\$91,725,487
Less Scholarship Allowance	-14,290,197	-15,870,780	-17,226,327	-21,202,125	-24,139,088	-25,482,683
Net Tuition & Fees	\$56,430,682	\$57,523,347	\$60,034,123	\$60,664,817	\$63,415,145	\$66,242,804
Receipts from Other Entities	86,580	143,924	241,941	111,554	120,433	111,978
Grants and Contracts	30,862,654	32,073,018	36,708,661	42,493,448	42,887,829	39,370,649
Sales, Rents and Services	6,191,782	7,420,630	5,774,668	7,687,525	7,998,091	8,237,789
Miscellaneous	805,056	720,116	607,771	2,868,615	992,772	501,925
Auxiliary Enterprises	47,559,182	50,176,930	54,859,014	55,193,227	56,156,143	58,742,116
Total Operating Revenues	\$141,935,936	\$148,057,965	\$158,226,178	\$169,019,186	\$171,570,413	\$173,207,261
OPERATING EXPENSES						
Instruction	\$68,768,086	\$72,605,101	\$76,484,933	\$71,168,267	\$78,570,575	\$80,291,964
Research	3,232,126	2,454,770	1,793,393	2,507,353	3,106,240	2,951,957
Public Service	23,487,990	24,184,724	31,097,013	31,497,042	25,396,214	22,152,465
Academic Support	19,770,673	22,050,064	22,729,813	23,894,367	25,413,636	24,855,928
Student Services	6,277,839	6,558,084	7,076,945	6,205,098	7,280,432	8,210,073
Institutional Support	19,162,659	20,230,830	29,348,125	26,713,928	23,535,960	29,683,285
Operation and Maintenance of Plant	20,686,896	21,396,250	22,185,917	20,177,365	21,884,211	20,441,078
Scholarships and Fellowships	4,495,486	4,884,137	5,712,482	6,760,209	7,150,385	6,470,804
Depreciation	12,517,313	13,291,606	13,975,476	14,461,097	15,270,614	16,105,032
Loan Cancellations and Write-offs	278,590	251,886	513,815	172,245	137,397	288,141
Auxiliary Enterprises	43,779,370	49,043,443	50,077,862	48,447,239	48,858,614	50,787,350
Total Operating Expenses	\$222,457,028	\$236,950,895	\$260,995,774	\$252,004,210	\$256,604,278	\$262,238,077
Operating (Loss)	(80,521,092)	(88,892,930)	(102,769,596)	(82,985,024)	(85,033,865)	(89,030,816)

Statement of Revenues, Expenses and Changes In Net Assets, 2007-2012* (Continued)

	2007	2008	2009	2010	2011	2012
NON-OPERATING REVENUES (EXPENSES)						
State Appropriations	86,531,082	\$95,363,638	\$101,686,218	\$97,861,782	82,683,919	77,765,014
Investment Return	5,246,906	1,687,404	-611,282	2,990,195	3,023,277	1,921,916
Gifts, Grants and Contracts	2,954,052	2,600,605	3,384,744	3,332,794	3,179,412	3,701,740
Interest Expense	-5,014,486	-5,765,266	-5,742,508	-6,274,646	-5,924,235	-6,258,688
Amortization Expense	-77,102	-94,140	-101,839	-109,855	-133,446	-146,849
Miscellaneous Expense	-114,674	-29,950	-22,289	-6,850	0	-118,360
Net Non-Operating Revenue						
(Expenses)	\$89,525,778	\$93,762,291	\$98,593,044	\$97,793,420	\$82,828,927	\$76,864,773
(Loss) Before Other Revenues	\$9,004,686	\$4,869,361	-\$4,176,552	\$14,808,396	-\$2,204,938	-\$12,166,043
State Appropriations – Capital Projects	\$8,650,293	\$5,018,136	\$5,751,912	\$5,927,801	\$5,808,082	\$7,016,578
Capital Contributions and Grants	9,988,308	4,117,894	9,845,582	5,164,996	3,412,442	1,913,243
Total Other Revenues	\$18,638,601	\$9,136,030	\$15,597,494	\$11,092,797	\$9,220,524	\$8,929,821
Change in Net Assets	\$27,643,287	\$14,005,391	\$11,420,942	\$25,901,193	\$7,015,586	(\$3,236,222)
NET ASSETS						
Total Net Assets – July 1	\$245,564,211	\$273,207,498	\$287,212,889	\$298,633,831	\$324,535,024	\$331,550,610
Total Net Assets – June 30	<u>\$273,207,498</u>	<u>\$287,212,889</u>	<u>\$298,633,831</u>	<u>\$324,535,024</u>	<u>\$331,550,610</u>	<u>\$328,314,388</u>

Source: Financial Accounting and Reporting Services

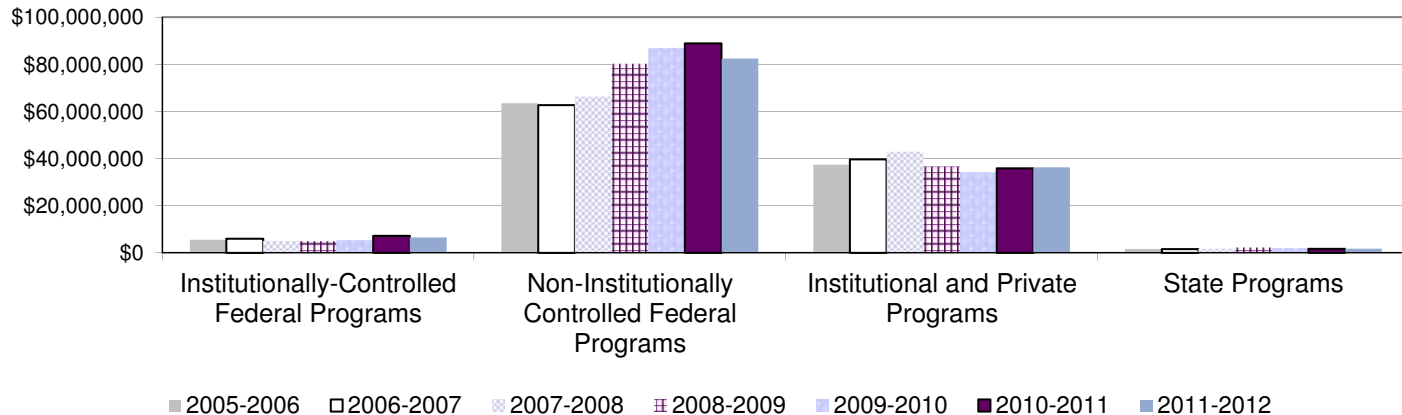
*Fiscal year runs July 1 through June 30.

Financial Aid Programs by Source of Aid 2005-2006 to 2011-2012

	2005-2006	2006-2007	2007-2008	2008-2009	2009-2010	2010-2011	2011-2012
TOTAL	\$108,098,431	\$110,016,744	\$116,186,986	\$124,372,381	\$128,829,476	\$133,627,082	\$127,078,624
Institutionally-Controlled Federal Programs	\$5,538,707	\$5,960,783	\$5,089,322	\$4,967,660	\$5,480,750	\$7,181,829	\$6,519,982
Non-Institutionally Controlled Federal Programs	\$63,440,923	\$62,671,914	\$66,386,640	\$80,337,778	\$86,925,180	\$88,875,504	\$82,439,618
Institutional and Private Programs	\$37,412,713	\$39,724,049	\$42,910,360	\$36,737,956	\$34,287,847	\$35,871,303	\$36,323,315
State Programs	\$1,706,088	\$1,659,998	\$1,800,664	\$2,328,987	\$2,135,699	\$1,698,446	\$1,795,709

Source: Financial Aid Office

Source of Financial Aid
2005 through 2012



Student Financial Aid Programs 2009-2010 to 2011-2012

	2009-2010			2010-2011			2011-2012		
	Number of Awards	Value of Awards	Mean Award	Number of Awards	Value of Awards	Mean Award	Number of Awards	Value of Awards	Mean Award
TOTAL	38,145	\$128,829,476	\$3,377	40,698	\$133,627,082	\$3,283	41,225	127,078,624	\$3,083
Institutional & Private Gift Aid	9,702	\$19,984,057	\$2,060	11,525	\$22,032,732	\$1,912	12,497	22,008,551	\$1,761
Institutional Scholarships/Grants	6,968	12,017,114	\$1,725	7,952	12,649,911	\$1,591	8,129	13,646,797	\$1,679
Corporate/Private Scholarships	2,342	4,898,775	\$2,092	3,193	6,382,805	\$1,999	4,065	5,054,651	\$1,243
Athletic Scholarships	392	3,068,168	\$7,827	380	3,000,016	\$7,895	303	3,307,103	\$10,915
Federal & State Grants	6,405	\$16,776,728	\$2,619	662	\$18,349,476	\$2,771	5,641	\$17,322,672	\$3,071
Federal Pell Grant	3,309	10,882,051	\$3,289	3,386	12,193,939	\$3,601	3,219	11,439,862	\$3,554
Academic Competitiveness Grant	608	491,527	\$808	728	583,611	\$802	0	0	
National SMART Grant	187	573,673	\$3,068	168	505,745	\$3,010	0	0	
Supplemental Education Opportunity Grant	590	556,989	\$944	480	433,756	\$904	478	433,756	\$907
TEACH Grant	314	1,205,082	\$3,838	414	1,572,048	\$3,797	643	2,433,576	\$3,785
ROTC	8	62,471	\$7,809	5	38,839	\$7,768	4	34,616	\$8,654
Other Federal Grant/Scholarship Programs	439	988,018	\$2,251	686	1,369,632	\$1,997	537	1,236,721	\$2,303
All Iowa Opportunity Scholarship	55	295,792	\$5,378	31	205,955	\$6,644	46	318,817	\$6,931
IMAGES Grant	204	332,200	\$1,628	191	333,158	\$1,744	193	332,200	\$1,721
Iowa Grant	191	161,830	\$847	117	102,442	\$876	107	98,804	\$923
Vocational Rehabilitation	179	523,610	\$2,925	169	366,416	\$2,168	140	317,356	\$2,267
Commission for the Blind	2	11,163	\$5,582	1	8,001	\$8,001	2	3,916	\$1,958
Other State Grants	223	286,548	\$1,285	175	296,551	\$1,695	174	165,035	\$948
National Guard	96	405,774	\$4,227	71	339,383	\$4,780	98	508,013	\$5,184
Loans	17,273	\$80,608,345	\$4,667	17,665	\$81,239,021	\$4,599	18,346	75,548,219	\$4,118
State Loans	0	0	\$0	0	0	\$0	0	0	\$0
Federal Perkins	511	845,398	\$1,654	909	1,731,175	\$1,904	1,012	1,637,939	\$1,619
Direct Loans	16,118	75,876,571	\$4,708	16,251	76,529,612	\$4,709	16,839	70,887,684	\$4,210
Alternative Loans	644	3,886,376	\$6,035	505	2,978,234	\$5,897	495	3,022,596	\$6,106
Employment	4,765	\$11,460,346	\$2,405	4,765	\$11,460,346	\$2,405	4,741	12,199,182	\$2,573
Federal Work Study	512	769,415	\$1,503	537	821,861	\$1,530	433	613,605	\$1,417
Iowa Work Study	0	0	-	0	0	-	0	0	\$0
Graduate Teaching, Research Assistantships	362	2,263,481	\$6,253	399	2,409,747	\$6,039	376	2,318,523	\$6,166
UNI Employment	3,891	8,427,450	\$2,166	3,950	8,774,245	\$2,221	3,932	9,267,054	\$2,357

Source: Financial Aid Office

Full-Time Undergraduate Student Tuition and Fees 1993-2012*

Academic Year	Academic Services	Activity	Athletics	Computing/Technology	Facilities	General Student Services	Health Services	Health Facility	Surcharge	Total Mandatory Fees	UG Tuition	Total Tuition & Mandatory Fees
1993-94				\$80			\$80			\$160	\$2,192	\$2,352
1994-95				\$84			\$80			\$164	\$2,291	\$2,455
1995-96				\$88			\$84			\$172	\$2,386	\$2,558
1996-97				\$92			\$88			\$180	\$2,470	\$2,650
1997-98				\$96			\$90			\$186	\$2,566	\$2,752
1998-99				\$100			\$94			\$194	\$2,666	\$2,860
1999-00				\$104			\$98			\$202	\$2,786	\$2,988
2000-01				\$122			\$102			\$224	\$2,906	\$3,130
2001-02		\$92		\$126			\$106			\$324	\$3,116	\$3,440
2002-03		\$174		\$140			\$112			\$426	\$3,692	\$4,118
2003-04				\$150	\$180	\$102	\$116	\$26		\$574	\$4,342	\$4,916
2004-05				\$165	\$180	\$190	\$124	\$26		\$685	\$4,702	\$5,387
2005-06				\$116	\$198	\$222	\$144	\$32		\$712	\$4,890	\$5,602
2006-07				\$178	\$232	\$231	\$152	\$33	\$200	\$1,026	\$5,086	\$6,112
2007-08				\$187	\$237	\$223	\$158	\$33		\$838	\$5,352	\$6,190
2008-09				\$193	\$237	\$227	\$162	\$33		\$852	\$5,524	\$6,376
2009-10		\$35		\$200	\$235	\$215	\$166	\$29	\$100	\$980	\$5,756	\$6,736
2010-11		\$45		\$212	\$235	\$213	\$172	\$29		\$906	\$6,102	\$7,008
2011-12		\$60		\$229	\$235	\$213	\$176	\$29		\$942	\$6,408	\$7,350
2012-13		\$65		\$252	\$235	\$217	\$189	\$29		\$987	\$6,648	\$7,635

Source: Office of the Registrar

*All Non-College of Business Administration Resident Students

Full-Time Graduate Student Tuition and Fees 1993-2012*

Academic Year	Academic Services	Activity	Athletics	Computing/Technology	Facilities	General Student Services	Health Services	Health Facility	Surcharge	Total Mandatory Fees	Grad Tuition	Total Tuition & Mandatory Fees
1993-94				\$80			\$80			\$160	\$2,464	\$2,624
1994-95				\$84			\$80			\$164	\$2,655	\$2,819
1995-96				\$88			\$84			\$172	\$2,834	\$3,006
1996-97				\$92			\$88			\$180	\$2,932	\$3,112
1997-98				\$96			\$90			\$186	\$3,046	\$3,232
1998-99				\$100			\$94			\$194	\$3,166	\$3,360
1999-00				\$104			\$98			\$202	\$3,308	\$3,510
2000-01				\$122			\$102			\$224	\$3,452	\$3,676
2001-02		\$92		\$126			\$106			\$324	\$3,702	\$4,026
2002-03		\$174		\$140			\$112			\$426	\$4,388	\$4,814
2003-04				\$150	\$180	\$102	\$116	\$26		\$574	\$5,038	\$5,612
2004-05				\$165	\$180	\$190	\$124	\$26		\$685	\$5,488	\$6,173
2005-06				\$116	\$198	\$222	\$144	\$32		\$712	\$5,708	\$6,420
2006-07				\$178	\$232	\$231	\$152	\$33	\$200	\$1,026	\$5,936	\$6,962
2007-08				\$187	\$237	\$223	\$158	\$33		\$838	\$6,246	\$7,084
2008-09				\$193	\$237	\$227	\$162	\$33		\$852	\$6,446	\$7,298
2009-10		\$35		\$200	\$235	\$215	\$166	\$29	\$100	\$980	\$6,716	\$7,696
2010-11		\$45		\$212	\$235	\$213	\$172	\$29		\$906	\$7,120	\$8,026
2011-12		\$60		\$229	\$235	\$213	\$176	\$29		\$942	\$7,476	\$8,418
2012-13		\$65		\$252	\$235	\$217	\$189	\$29		\$987	\$7,756	\$8,743

Source: Office of the Registrar

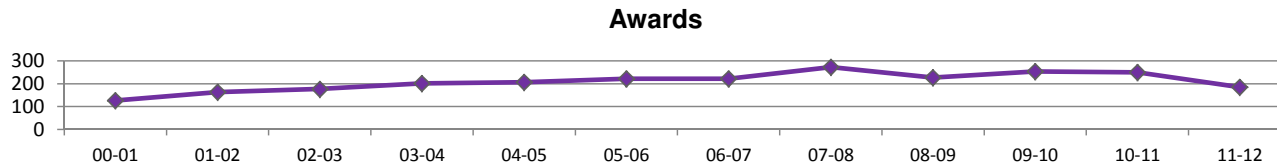
*Resident Student

Sponsored Project Proposals and Awards 2000-2012*

Fiscal Year	Proposals (P)		Awards (A)	
	N	Amount (\$)	N	Amount (\$)
2000-01	202	33,597,082	127	19,439,556
2001-02	213	31,687,716	164	23,400,612
2002-03	231	40,056,854	177	28,835,568
2003-04	288	37,183,501	202	22,226,432
2004-05	257	44,271,909	207	32,203,943
2005-06	296	47,263,423	222	33,071,632
2006-07	280	41,819,467	222	27,003,729
2007-08	352	42,777,178	273	37,101,834
2008-09	273	56,854,498	227	45,767,242
2009-10	365	53,717,963	254	39,754,021
2010-11	353	56,922,612	250	42,018,391
2011-12	227	42,435,603	185	38,326,824

Source: Sponsored Programs

*Excluding Student Financial Aid, includes Amendments





Library

Library



Library

Library Statistics: 2007 - 2012

	2007	2008	2009	2010	2011	2012
PERSONNEL – FTE						
Library Faculty	19	19	19	19	19	20
Library Associates	11	11	12	11	11	11
Library Staff	25	25	24	24	24	21
Student Assistants	20	19	19	18	17	16
HOLDINGS/ACCESS						
Books	785,340	793,864	797,078	800,239	797,883	799,353
Periodicals	184,726	187,846	189,843	176,076	175,348	176,824
Electronic Books	26,030	32,780	39,022	46,304	77,877	14,245
Electronic Journals	25,762	30,879	44,174	44,350	52,924	50,909
Maps (sheets and folded)	41,210	41,291	41,453	41,425	41,438	41,567
Government Documents (all)						
Paper	265,728	263,226	265,026	262,832	252,048	230,393
Microform	300,569	301,813	303,034	303,508	303,085	302,709
CD/DVD/Floppy	3,780	3,832	3,369	3,416	3,425	3,430
Subscriptions						
Periodicals (paper, w/ newspapers)	2,298	2,171	2,051	1,534	1,494	1,237
Periodicals (electronic, w/ newspapers)	1,466	1,390	1,231	1,527	1,590	1,198
Databases	147	175	148	140	96	123
Audiovisuals						
Sound recordings	15,983	16,100	16,797	17,330	17,923	18,155
Films and Videotapes	4,841	5,393	6,563	6,864	7,954	8,393
Other nonprint materials	9,671	9,711	9,663	9,583	9,583	3,634

Library Statistics: 2007 - 2012 (Continued)

	2007	2008	2009	2010	2011	2012
Microform Units (not govt. docs.)						
Microfilm	29,321	29,570	29,754	29,917	29,799	29,975
Microfiche	770,757	773,761	774,089	774,574	774,279	774,726
Microcards	17,076	17,076	17,076	17,076	17,076	17,076
Archives & Manuscripts (linear feet)	4,868	4,986	5,033	5,114	5,265	5,329
SERVICES						
Building Entrance Count	455,723	466,476	460,455	487,375	495,971	519,307
Circulation (first time loans)	166,054	166,508	166,380	161,881	140,130	134,571
Reference Transactions (all)	12,448	11,318	11,714	12,433	12,217	12,994
Interlibrary Loan						
Borrowed	5,744	5,776	5,641	5,055	4,357	3,847
Loaned	6,699	6,476	6,291	6,399	5,663	5,203
Library Instruction						
Classes	273	284	330	295	300	336
Persons served	5,616	6,020	7,465	6,128	6,746	6,400
Document Delivery						
On Campus	2,706	1,093	914	*	*	*
Off Campus	736	702	784	573	377	649

Source: *The Rod Library*

*Statistic No Longer Captured



General Information



General Information

International Students by Country: Fall 2012*

Country	N	Country	N	Country	N	Country	N
Australia	2	Hong Kong	15	Peru	1	Zambia	2
Austria	4	India	21	Poland	1	Zimbabwe	1
Bangladesh	3	Indonesia	1	Russia	16		
Benin	1	Iran	2	Rwanda	3		
Brazil	7	Japan	14	Saudi Arabia	163		
Burma	1	Jordan	2	Sierre Leone	1		
Cameroon	1	Kenya	1	Singapore	1		
Canada	7	Kyrgyzstan	1	South Korea	13		
Chile	5	Macedonia	1	Spain	2		
China	88	Malaysia	12	Sri Lanka	1		
Columbia	2	Mali	1	Switzerland	1		
Denmark	1	Mexico	2	Taiwan	5		
Ecuador	1	Namibia	1	Tajikistan	1		
Egypt	1	Nepal	9	Togo	1		
France	3	Nicaragua	1	Turkey	5		
Germany	4	Nigeria	3	United Kingdom	3		
Greece	1	Norway	1	Venezuela	3		
Guinea-Bissau	1	Pakistan	3	Vietnam	6	TOTAL	454
						Number of Countries	56

Source: Office of the Registrar

*Includes undergraduates and graduates

International Students by College 2006-2012*

College	2006	2007	2008	2009	2010	2011	2012	1 Yr % Change	5 Yr % Change
TOTAL	432	472	464	453	480	488	454		-3.8
Annual Percent Change	2.4	9.3	-1.7	-2.4	6.0	1.7	-7.0		
Business Administration	102	88	125	143	154	167	163	-2.5	85.2
Education	48	46	38	29	29	35	43	18.6	-6.5
Humanities, Arts and Sciences	-	-	-	-	-	178	145	-22.8	-
Social and Behavioral Sciences	25	23	24	18	26	18	25	28.0	8.7
No Specific College	119	152	119	90	113	90	78	-15.4	-48.7

Source: *Office of the Registrar*

*Includes undergraduates and graduates

Top 5 Countries of Origin for International Students 2001-2012

Fall	Country	N	Country	N	Country	N	Country	N	Country	N	Total International Students
2001	Russia	48	Japan	24	PR China	24	South Korea	19	Canada	13	355
2002	Japan	51	Russia	45	PR China	18	India	17	Taiwan	14	366
					South Korea	18					
2003	Russia	51	Japan	43	Hong Kong	28	South Korea	25	PR China	21	384
2004	Russia	50	Japan	34	India	21	Peru	16	PR China	15	351
									South Korea	15	
2005	Russia	61	Hong Kong	33	Japan	30	South Korea	26	India	23	422
					Saudi Arabia	30					
2006	Saudi Arabia	70	Russia	51	Hong Kong	37	China	28	India	23	432
2007	Saudi Arabia	72	Russia	50	China	43	India	38	Hong Kong	24	472
2008	China	82	Saudi Arabia	71	Hong Kong	45	India	37	Russia	34	464
2009	Saudi Arabia	106	China	85	India	35	Russia	26	Hong Kong	17	453
2010	Saudi Arabia	146	China	100	India	27	Russia	23	South Korea	16	480
2011	Saudi Arabia	180	China	89	Russia	24	India	21	Hong Kong	18	488
2012	Saudi Arabia	163	China	88	India	21	Russia	16	Hong Kong	15	454

Study Abroad Host Country or Destination: Fall 11/Spring 12/Summer 12/Fall 12*

Country	N	Country	N
Argentina	1	Ireland	49
Australia	7	Italy	141
Austria	7	Japan	150
Bahrain	5	Korea, Republic Of	46
Belgium	7	Morocco	2
Belize	1	Netherlands	26
Brazil	7	New Zealand	5
Canada	15	Nicaragua	28
Chile	20	Norway	2
China	49	Poland	15
Costa Rica	31	Puerto Rico	1
Denmark	1	Romania	2
Ecuador	1	Russian Federation	20
France	40	Singapore	2
Germany	234	South Africa	24
Greece	40	Spain	44
Guatemala	1	Taiwan, Provnce of China	15
Honduras	2	Tanzania, United Republic Of	1
Hungary	2	Turkey	12
India	13	United Arab Emirates	4
Indonesia	1	United Kingdom	56
		TOTAL	1130
		Number of Countries	42

Source: Study Abroad Center

*Includes undergraduates and graduates

UNI Services to Businesses, Communities and Local Government

Divisions	Location	Telephone	Web Site
Center for Energy and Environmental Education	Cedar Falls, IA	319-273-2573	www.uni.edu/ceee
Executive Development Center	Cedar Falls, IA	319-273-5851	www.bcs.uni.edu/execdev
Geoinformatics Training, Research, Education and Extension	Cedar Falls, IA	319-273-3816	www.geotree.uni.edu
Heartland Economic Development Course	Cedar Falls, IA	319-273-2969	www.bcs.uni.edu/heartland
Institute for Decision Making	Cedar Falls, IA	319-273-6941	www.bcs.uni.edu/idm
Iowa Center for Immigrant Leadership and Integration	Cedar Falls, IA	319-273-3029	www.bcs.uni.edu/ICILI
Iowa Waste Reduction Center	Cedar Falls, IA	319-273-8905	www.iwrc.org
John Pappajohn Entrepreneurial Center	Cedar Falls, IA	319-273-5732	www.bcs.uni.edu/jpec
Materials Innovation Service	Cedar Falls, IA	319-273-7499	www.rttc.com
National Ag-Based Industrial Lubricants	Waterloo, IA	319-233-3812	www.uni.edu/nabl
Recycling and Reuse Technology Transfer	Cedar Falls, IA	319-273-3689	www.uni.edu/rrttc
Regional Business Center	Cedar Falls, IA	319-273-4335	www.uni.edu/rbc
Strategic Marketing Services	Cedar Falls, IA	319-273-2886	www.sms.uni.edu
Sustainable Tourism and Environmental Program	Cedar Falls, IA	319-273-6840	www.uni.edu/step
Tallgrass Prairie Center	Cedar Falls, IA	319-273-2238	www.tallgrassprairiecenter.org
UNI Metal Casting Center	Cedar Falls, IA	319-273-6894	www.mcc.uni.edu

Source: *Business and Community Services*

UNI Carnegie Classification

Classification	Category
Basic	Master's L: Master's Colleges and Universities (larger programs)
Size and Setting	L4/R: Large four-year, primarily residential
Enrollment Profile	VHU: Very high undergraduate
Undergraduate Profile	FT4/S/HTI: Full-time four-year, selective, higher transfer-in
Undergraduate Instructional Program	Prof + A&S/SGC: Profession plus arts & sciences, some graduate coexistence
Graduate Instructional Program	Doc/Prof: Doctoral, professions dominant
<i>This institution participated in the following elective classification:</i>	
Community Engagement	Curricular Engagement and Outreach and Partnerships
Level	4-year or above
Control	Public
Enrollment (Fall 2004)	12,927

Source: *The Carnegie Foundation for the Advancement of Teaching* - classification based on data from 2003 and 2004

NOTES:

Graduate program classification is based on fewer than 50 degrees.

Undergraduate program classification: the percentage is within 5 points of a category border (arts & sciences direction).

Apparent inconsistencies between basic and instructional program classifications are due to degree thresholds used in the basic classification.

Iowa Economic Impact Profile

Item	Details	Amount
Purchase Power	Goods and services purchased in Iowa (2011-2012)	\$56,656,553
Discretionary Spending and Tourism	12,273 current students	
	35,800 attendees at GBPAC Artist Series events (2011-2012)	
	285,000 attendees at UNI-Dome and McLeod for non sporting events (2011-2012)	
	214,083 attendees at UNI-Dome and McLeod for UNI athletic events (2011-2012)	
Provide Higher Ed	more than 90.0% of students are from Iowa	
	Credit courses were offered in 72 counties and 147 cities and towns	
	25 off-campus degree and certification programs were offered	
	12,924 enrollment in Continuing and Distance Education Credit courses	
	25,159 individuals took advantage of non-credit offerings (some were out-of-state)	
Business Services and Community Impact	Total number community service hours engaged in by UNI students is 480,117 (2011-2012)	
	UNI provided service in all 99 counties to nearly 885 unique business, community and local government clients; another 10,900 individuals were engaged in the MyEntre.Net entrepreneurial support system.	

Source: Office of University Relations





Peer Institutions

Undergraduate Enrollment and Costs 2011-2012

Institution	Location	UG	Student-	In-State	Out-of-State
			to-Faculty Ratio	Tuition & Fees	Tuition & Fees
Northern Arizona University	Flagstaff, AZ	20,746	20/1	\$22,730	\$35,086
California State University	Fresno, CA	19,132	26/1	\$21,069	\$32,229
Illinois State University	Normal, IL	18,594	19/1	\$24,816	\$31,776
Indiana State University	Terre Haute, IN	9,449	18/1	\$19,838	\$29,062
University of Northern Iowa	Cedar Falls, IA	11,408	16/1	\$18,876	\$27,632
Central Michigan University	Mt. Pleasant, MI	21,698	22/1	\$20,556	\$32,624
University of Minnesota	Duluth, MN	10,680	21/1	\$22,780	\$25,290
University of North Carolina	Greensboro, NC	14,898	17/1	\$17,904	\$30,429
Ohio University	Athens, OH	21,655	20/1	\$23,343	\$32,307
University of North Texas	Denton, TX	29,897	21/1	\$18,827	\$26,339
University of Wisconsin	Eau Claire, WI	10,646	21/1	\$17,332	\$24,905

Source: *IPEDS*

UG-Fall 2011 undergraduate enrollment

The cost here refers to the total dollar amount of living on campus thus including room and board.

Faculty by Rank 2011-2012

Institution	Location	Professor	Associate	Assistant
			Professor	Professor
Northern Arizona University	Flagstaff, AZ	258	191	178
California State University	Fresno, CA	220	154	134
Illinois State University	Normal, IL	248	252	210
Indiana State University	Terre Haute, IN	120	151	99
University of Northern Iowa	Cedar Falls, IA	157	196	123
Central Michigan University	Mt. Pleasant, MI	266	145	244
University of Minnesota	Duluth, MN	77	150	139
University of North Carolina	Greensboro, NC	195	248	135
Ohio University	Athens, OH	216	304	252
University of North Texas	Denton, TX	281	276	219
University of Wisconsin	Eau Claire, WI	122	111	129

Source: *IPEDS*

2011-2012 Academic year; full-time faculty on both 9/10 month and 11/12 month contract length

Faculty Average Salaries by Rank 2011-2012

Institution	Location	Associate Professor		Assistant Professor		All Ranks
		Professor	Professor	Professor	Instructor	
Northern Arizona University	Flagstaff, AZ	\$96,940	\$69,318	\$58,990	\$39,010	\$69,530
California State University	Fresno, CA	\$94,783	\$71,333	\$62,097	N/A	\$73,879
Illinois State University	Normal, IL	\$90,049	\$69,068	\$67,124	N/A	\$69,297
Indiana State University	Terre Haute, IN	\$90,556	\$67,413	\$60,485	\$40,875	\$67,751
University of Northern Iowa	Cedar Falls, IA	\$87,088	\$68,943	\$58,856	\$49,856	\$67,886
Central Michigan University	Mt. Pleasant, MI	\$97,783	\$75,246	\$61,476	\$41,305	\$71,792
University of Minnesota	Duluth, MN	\$93,842	\$72,141	\$58,289	\$47,138	\$67,389
University of North Carolina	Greensboro, NC	\$109,378	\$75,849	\$62,880	\$57,329	\$73,731
Ohio University	Athens, OH	\$102,132	\$76,039	\$60,391	\$42,514	\$74,128
University of North Texas	Denton, TX	\$106,181	\$80,195	\$66,548	\$57,150	\$77,000
University of Wisconsin	Eau Claire, WI	\$72,896	\$61,454	\$56,367	\$44,899	\$59,237

Source: *IPEDS*

2011-2012 Academic year; full-time faculty

Undergraduates Receiving Student Financial Aid: 2010-2011*

Institution	Location	Federal Grants**		State/Local Grants		Institutional Grants		Receiving Any Financial Aid
		N	\$	N	\$	N	\$	%
Northern Arizona University	Flagstaff, AZ	1,405	5,424	225	2,366	2,410	7,204	85
California State University	Fresno, CA	1,396	5,503	1,373	2,351	1,374	4,343	75
Illinois State University	Normal, IL	770	4,744	851	5,592	1,002	3,688	72
Indiana State University	Terre Haute, IN	1,329	4,559	1,062	4,481	1,453	2,835	93
University of Northern Iowa	Cedar Falls, IA	546	4,769	97	3,099	1,137	3,061	91
Central Michigan University	Mt. Pleasant, MI	1,405	4,635	642	715	2,669	4,792	86
University of Minnesota	Duluth, MN	633	4,848	2,077	2,163	1,147	3,598	98
University of North Carolina	Greensboro, NC	1,132	5,157	1,405	3,057	1,207	2,399	77
Ohio University	Athens, OH	1,171	4,768	716	1,334	2,279	3,588	89
University of North Texas	Denton, TX	1,351	5,013	1,675	4,925	1,667	2,667	85
University of Wisconsin	Eau Claire, WI	522	4,933	480	1,868	765	634	75

Source: *Integrated Postsecondary Education Data System (IPEDS)*

*Full-time, first-time, degree/certificate-seeking undergraduate students receiving financial aid.

\$: Average amount of aid received.

**Federal grant aid plus other federal grant aid (new in 2007-2008)

Retention and Graduation Rates Fall 2011

Institution	Location	Retention *	Graduation Rates **
		%	Total
Northern Arizona University	Flagstaff, AZ	73	50
California State University	Fresno, CA	86	48
Illinois State University	Normal, IL	85	69
Indiana State University	Terre Haute, IN	58	40
University of Northern Iowa	Cedar Falls, IA	82	67
Central Michigan University	Mt. Pleasant, MI	76	57
University of Minnesota	Duluth, MN	78	52
University of North Carolina	Greensboro, NC	76	52
Ohio University	Athens, OH	80	69
University of North Texas	Denton, TX	78	47
University of Wisconsin	Eau Claire, WI	84	65

Source: *Integrated Postsecondary Education Data System (IPEDS)*

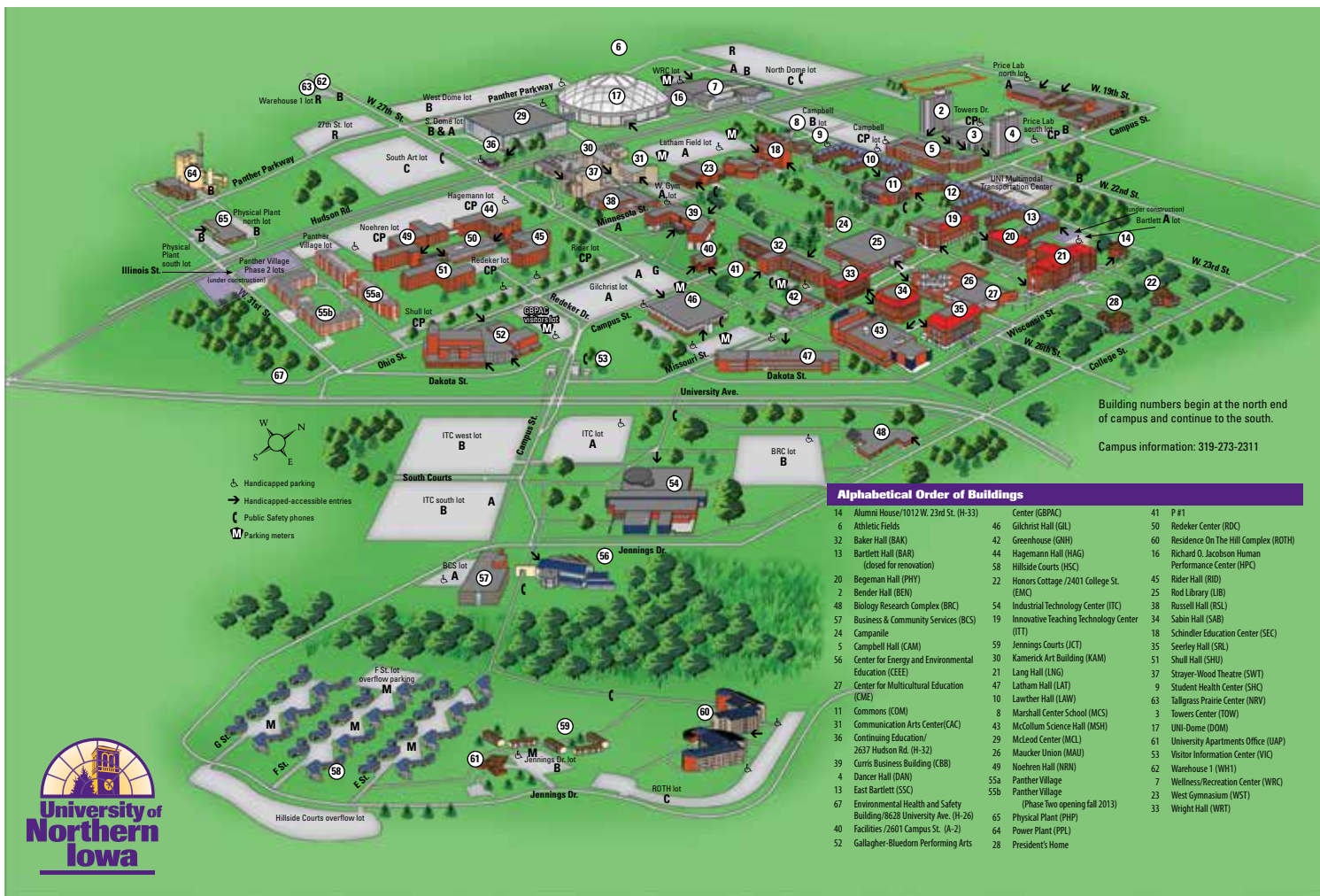
*Full-time retention rate, 2011-12 academic year

**Graduation rates within 150% of normal time Fall 2011

Degrees Granted In Academic Year 2011-2012

Institution	Location	Baccalaureate	Master's	Doctorates	Total
		(Bachelor's)			
Northern Arizona University	Flagstaff, AZ	3,782	1,707	95	5,584
California State University	Fresno, CA	3,552	811	36	4,399
Illinois State University	Normal, IL	4,287	830	43	5,160
Indiana State University	Terre Haute, IN	1,317	531	67	1,915
University of Northern Iowa	Cedar Falls, IA	2,198	514	13	2,725
Central Michigan University	Mt. Pleasant, MI	3,717	1,915	92	5,724
University of Minnesota	Duluth, MN	1,943	225	13	2,181
University of North Carolina	Greensboro, NC	2,762	945	130	3,837
Ohio University	Athens, OH	4,630	1,023	267	5,920
University of North Texas	Denton, TX	6,362	1,806	227	8,395
University of Wisconsin	Eau Claire, WI	2,021	171	0	2,192

Source: *Integrated Postsecondary Education Data System (IPEDS)*





University of Northern Iowa

CIO's Office and Office of
Institutional Research
University of Northern Iowa
Cedar Falls, Iowa 50614-0005

319-273-3050

