



2018-2019 FACT BOOK

Institutional Research & Effectiveness

Within a challenging and supportive environment, the University of Northern Iowa engages students in high-quality and high-impact learning experiences and emphasizes excellence in teaching and scholarship.



Quick Reference

University President	Mark A. Nook	Residence Hall Occupancy	3,558
Board of Regents President	Michael Richards	Number of Financial Aid Awards	38,950
University Accreditation	Higher Learning Commission (HLC)	Fall 2018 Employees	
		Faculty and Institutional Officers	609
		Professional and Scientific	685
		General Service Staff	517
Number of Colleges	4	Total	1,811
Number of Academic Departments	32	2018 Current Funds Revenues	\$371,246,326
Enrollment 2018 (Fall Headcount)		2018 - 2019 Sponsored Funding Awarded	\$39,476,790
Undergraduate	9,561	Academic Year 2018 - 2019 Tuition and Fees	
Graduate	1,651	Undergraduate Resident	\$7,666
Total	11,212	Graduate Resident	\$9,159
Enrollment 2018 (Fall FTE)		Undergraduate Nonresident	\$18,207
Undergraduate	8,820	Graduate Nonresident	\$19,633
Graduate	1,083	Academic Year 2018 - 2019 Room and Board	\$8,948
Total	9,903	Electronic Journals Available in Library	93,453
2017 - 2018 Degrees Awarded			
Baccalaureate (Bachelor's)	2,184	Location	Cedar Falls, IA
Master's	508	Homepage Address	http://www.uni.edu
Specialist	7	Office of Enrollment Services Phone Number	800-772-2037
Doctorate	23		
Total	2,722		
Total Living Alumni	118,729		
Student Financial Aid	\$114,140,034	For an electronic version of the fact book, visit our web site at:	http://www.uni.edu/ir/uni-facts



FACT BOOK 2018-2019

University of Northern Iowa

Institutional Research & Effectiveness

Cedar Falls, IA 50614-0005

319-273-3050 | oire@uni.edu

Student Contributors: Bailey Holm & Seth Thompson

Graphic and Publication Support: Office of University Relations

Table of Contents

Quick Reference.....	Inside front cover
Mission Statement.....	1
UNI Organizational Chart.....	2
UNI Administration.....	3
Definitions of Terms Used.....	4-5
Calendar.....	6

New Students

Fall New Students.....	9
New Student Applications, Admissions and Enrolled.....	10
New Students Enrolled by Residence.....	11
New Freshmen Enrollment by Residence.....	12
New Undergraduate Transfer Students by Type of Transfer College.....	13
New Freshmen ACT Composite Scores and High School Class Rank.....	14

Enrollment

Fall Students Profile by College.....	17
Headcount Enrollment.....	18
Headcount Enrollment by Level.....	19
Undergraduate Enrollment by Age.....	20
Undergraduate Headcount by College Fall.....	21
Fall Enrollment by Residence.....	22
Enrollment by Residence.....	23
Fall Enrollment by Race/Ethnicity.....	24
Minority Student Enrollment.....	25

Enrollment (continued)

Fall On-Campus Headcount and FTE Enrollment by Level.....	26
First Major Only by College and Level Fall.....	27
Annual Degrees Awarded by Level.....	28
Degrees Granted by College.....	29
Undergraduate Retention and Graduation Rates.....	30
Continuing Education Credit Enrollment Trends.....	31
Continuing Education Courses Offered.....	32
Web-Based Learning Management System (LMS).....	33
Fall Semester Residence Hall Occupancy by Legal Sex and Level.....	34

Alumni

Total Living Alumni by College.....	37
Total Living Alumni by College.....	38
Alumni by State.....	39
Alumni by Iowa County.....	40
Post-Graduation Status of Bachelors Degree Recipients.....	41
Post-Graduation Status of Graduate Degree Recipients.....	42
Undergraduate Plans for Further Education.....	43
Graduate Plans for Further Education.....	44

Continued on next page

Table of Contents

Continued

Faculty and Staff

Fall Faculty Profile by College.....	47
Fall Faculty by College, Legal Sex and Tenure Status.....	48-49
UNI Workforce by Employment Categories.....	50
UNI Workforce Headcount and FTE by Employment Categories.....	51
UNI Workforce by Race/Ethnicity.....	52
UNI Workforce by Employment Categories and Race/Ethnicity.....	53
UNI Workforce Headcount and FTE by Employment Categories and College.....	54
UNI Workforce Headcount by Employment Categories, Legal Sex and College Fall.....	55
UNI Workforce by Employment Categories, Level and College Fall.....	56
UNI Workforce by Employment Categories, Level and Legal Sex Fall.....	57
UNI Temporary Workforce Headcount and FTE by Employment Categories.....	58

Budget and Finance

Statement of Revenues, Expenses and Changes In Net Assets.....	61-62
Financial Aid Programs by Source of Aid.....	63
Student Financial Aid Programs.....	64
Full-Time Undergraduate Student Tuition and Fees.....	65
Full-Time Graduate Student Tuition and Fees.....	66
Sponsored Project Proposals and Awards.....	67

General Information

Library Statistics.....	71-72
International Students by Country.....	73
International Students by College.....	74
Top 5 Countries of Origin for International Students.....	75
UNI Study Abroad Students by College and Classification.....	76
UNI Study Abroad Students by Term.....	77
Incoming International Exchange Students by Country.....	78
Top 5 Countries for UNI Study Abroad Students.....	79
UNI Services to Businesses, Communities and Local Government.....	80
UNI Carnegie Classification.....	81
Iowa Economic Profile.....	82

Peer Institutions

Undergraduate Enrollment and Costs.....	85
Faculty by Rank.....	86
Faculty Average Salaries by Rank.....	87
Undergraduates Receiving Student Financial Aid.....	88
Retention and Graduation Rates.....	89
Degrees Granted in Academic Year.....	90

Campus Map.....	Inside back cover
-----------------	-------------------

Intentionally blank

Mission Statement

INSTITUTIONAL MISSION

Within a challenging and supportive environment, the University of Northern Iowa engages students in high-quality and high-impact learning experiences and emphasizes excellence in teaching and scholarship.

VISION STATEMENT

Offering personalized attention to students, the University of Northern Iowa will be a diverse and inclusive campus community that provides an engaged education empowering students to lead locally and globally.

VALUES

As a university community we are guided by the following core values:

Academic Freedom – the freedom of inquiry and expression in teaching and scholarship

Access – an inclusive educational environment that is accessible and affordable

VALUES (continued)

Accountability – a commitment to integrity, responsibility and the highest ethical standards integrated into all University practices

Collaboration – a commitment to work together to achieve our shared vision, mission, and goals

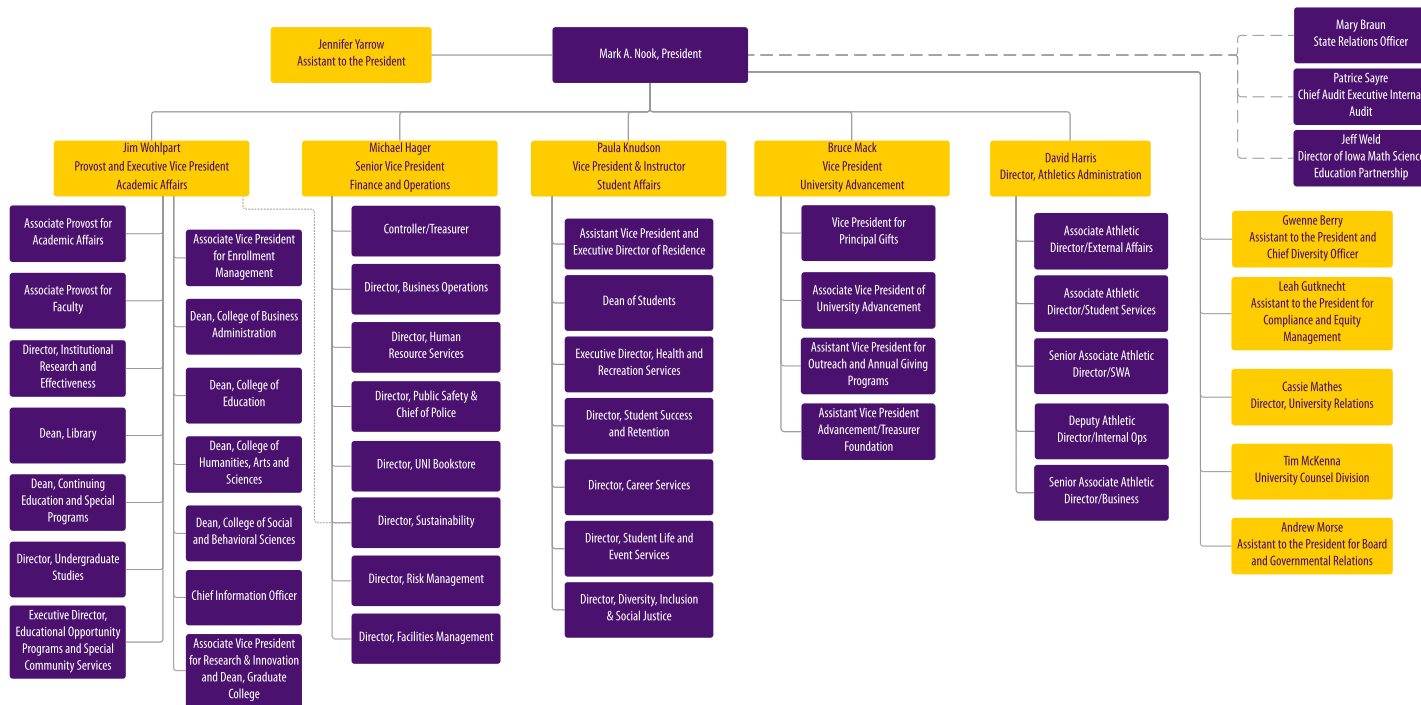
Community – a caring and safe community, characterized by civility and respect, which stands in solidarity against any actions that exclude, discriminate against, or silence members of our community

Diversity – the cultivation of a diverse and inclusive leaning and work environment

Engagement – active participation in transformative, innovative, and lifelong learning in a global society

Excellence – a commitment to the pursuit of excellence in individual and collective endeavors

Sustainability – a vibrant community and campus that is economically sound, environmentally responsible, and socially just



Administrative Organization 2018-19



UNI Administration

PRESIDENT	Mark A. Nook
EXECUTIVE VICE PRESIDENT and PROVOST	Jim Wohlpart
SENIOR VICE PRESIDENT for FINANCE and OPERATIONS	Michael Hager
VICE PRESIDENTS	
Vice President for Student Affairs.....	Paula Knudson
Vice President for University Advancement and President of the UNI Foundation.....	Bruce Mack
ASSISTANT TO PRESIDENT, BOARD and GOVERNMENTAL RELATIONS	Andrew Morse
ASSISTANT TO PRESIDENT and CHIEF DIVERSITY OFFICER	Gwenne Berry
CHIEF INFORMATION OFFICER	Marty Mark
DIRECTOR OF UNIVERSITY RELATIONS	Cassie Mathes
ASSOCIATE VICE PRESIDENT for ENROLLMENT MANAGEMENT	Matthew Kroeger
ASSOCIATE VICE PRESIDENT for RESEARCH & INNOVATION	Jennifer Waldron
ASSOCIATE PROVOSTS	
Associate Provost for Academic Affairs.....	Patrick Pease
Associate Provost for Faculty Affairs.....	John Vallentine
DEANS	
College of Business Administration.....	Leslie Wilson
College of Education.....	Gaëtane Jean-Marie
College of Humanities, Arts and Sciences.....	John Fritch
College of Social and Behavioral Sciences.....	Brenda Bass
Continuing Education and Special Programs.....	Kent Johnson
Graduate College	Jennifer Waldron
Library (Interim).....	Katherine Martin

Definitions of Terms Used

ENROLLMENTS

Headcount: The count of each student enrolled for one or more courses taken in a semester following the second week of the semester's start.

Full-Time Student: An undergraduate student enrolled for 12 or more credit hours per semester and a graduate student enrolled for 9 or more credit hours per semester.

FTE (Full-Time Equivalent): An enrollment unit used to represent a student enrolled for a full course of study. It is calculated by dividing total credit hours generated by 15.0 for undergraduate students and by 9 for graduate students for a semester FTE.

Unclassified/Undeclared Student: A student who has enrolled in instructional courses but has not been officially accepted into one of the institution's authorized degree programs.

Freshman: A first-year undergraduate student.

First-Time First-Year Student: A student attending any institution for the first-time at the undergraduate level. Includes students enrolled in the Fall term who attended college for the first time in the prior Summer term. Also includes students who entered with advanced standing (college credits earned before graduation from high school).

First-Time Student: A student attending any institution for the first time at the level enrolled. Includes students enrolled in the Fall term who attended a postsecondary institution for the first time at the same level in the prior Summer term. Also includes students who entered with advanced standing (college credit earned before graduation from high school).

Graduation Rate: Rate required for disclosure and/or reporting purposes under Student Right-to-Know. Calculated as the total number of completers within 150 percent of normal time divided by the revised cohort minus any allowable exclusions.

FACULTY AND STAFF

Faculty (Instruction/Research/Public Service): Persons whose specific assignments customarily are made for the purpose of conducting instruction, research, or public service as a principle activity (or activities), and who hold academic rank titles of professor, associate professor, assistant professor, instructor, lecturer or the equivalent of any of these academic ranks. This category excludes president, vice presidents, and deans. Also excluded are faculty on leave without pay.

Executive, Administrative and Managerial: Persons whose assignments require primary (and major) responsibility for management of the institution, or a customarily recognized department or subdivision, thereof. Assignments require the performance of work directly related to management policies or general business operations of the institution, department or subdivision. It is assumed that assignments in this category customarily and regularly require the incumbent to exercise discretion and independent judgment and to direct the work of others. Included in this category are all officers holding titles such as president, vice president, dean, director or the equivalent, as well as officers subordinated to any of these administrators with such titles as associate dean, assistant dean, executive officer of academic departments (department heads or the equivalent) if their principal activity is administrative.

Continued on next page

Definitions of Terms Used

Continued:

BUDGET AND FINANCE

Current Funds Expenditures (and Transfers): The costs incurred for goods and services used in the conduct of the institution's operations. Includes the acquisition cost of capital assets, such as equipment and library books, to the extent current funds are budgeted for and used by operating departments for such purposes.

Current Funds Revenues: Unrestricted gifts, grants and other resources earned during the reporting period and restricted resources to the extent that such funds were expended for current operating purposes. Excludes restricted current funds received, but not expended, because these revenues have not been earned.

Academic Support (Expenditures) for Public Institutions:

Expenditures for the support services that are an integral part of the public institution's primary mission of instruction, research or public service. Includes expenditures for libraries, museums, galleries, audiovisual services, academic computing support, ancillary support, academic administration, personnel development and course and curriculum development. Academic support expenditures for public institutions are measured differently than academic support expenses for private institutions because private institutions' academic support expenses include depreciation costs and interest costs in amounts associated with this function. In addition, private institutions exclude amounts of capital expenditures associated with the academic support function. Finally, operations and maintenance expenses associated with the academic support function are included in the amounts reported by private institutions but are reported separately by public institutions.

Auxiliary Enterprises (Expenditures) for Public Institutions:

Expenditures for essentially self-supporting operations of the institution that exist to furnish a service to students, faculty or staff, and that charge a fee that is directly related to, although not necessarily equal to, the cost of the service. Includes mandatory and nonmandatory transfers. Examples are residence halls, food services, student health services, athletics, UNI-Dome and performing arts center. Auxiliary enterprise expenditures are measured differently for public and private institutions. Public institutions include capital expenditure amounts associated with auxiliary enterprise expenditures, but do not include depreciation, interest and operations and maintenance expenses. These amounts are included in private institutions' expenses of auxiliary enterprises.

OTHER

IPEDS: The Integrated Postsecondary Education Data System conducted by National Center for Education Statistics (NCES). IPEDS began in 1986 and involves annual data collections. Survey data are required from all postsecondary institutions that have a Program Participation Agreement (PPA) with the Office of Postsecondary Education, U.S. Department of Education. IPEDS also requests limited data from approximately 3,000 other schools offering postsecondary education programs.

HLC: The Higher Learning Commission (HLC) is an independent corporation that was founded in 1895 as one of six regional institutional accreditations in the United States.

CALENDAR

Semester/Date

Fall 2018

Monday, August 20
Monday, September 3
Friday, October 12
Monday, October 15
Monday - Friday, November 19 - 23
Thursday - Friday, November 22 - 23
Monday - Friday, December 10 - 14
Saturday, December 15
Monday - Tuesday, December 24 - 25

Spring 2019

Tuesday, January 1
Monday, January 14
Monday, January 21
Friday, March 8
Monday, March 11
Monday - Friday, March 18 - 22
Monday - Friday, May 6 - 10
Saturday, May 11

Summer 2019

Monday, May 13
Monday, May 13
Monday, May 27
Friday, June 7
Monday, June 10
Monday, June 10
Friday, June 21
Monday, June 24
Friday, July 5
Thursday, July 4
Monday, July 8
Friday, August 2

Event

Semester begins
University holiday
First half ends
Second half begins
Thanksgiving break
University holiday
Final exam week
Commencement
University holiday

University holiday
Semester begins
University holiday
First half ends
Second half begins
Spring break
Final exam week
Commencement

First 4 week session begins
First 6 week session begins
University holiday
First 4 week session ends
Second 4 week session begins
8 week session begins
First 6 week session ends
Second 6 week session begins
Second 4 week session ends
University holiday
Third 4 week session begins
All sessions end

Semester/Date

Fall 2019

Monday, August 26
Monday, September 2
Friday, October 18
Monday, October 21
Monday - Friday, November 25 - 29
Thursday - Friday, November 28 - 29
Monday - Friday, December 16 - 20
Saturday, December 21
Tuesday - Wednesday, December 24-25

Spring 2020

Wednesday, January 1
Monday, January 13
Monday, January 20
Friday, March 6
Monday, March 9
Monday - Friday, March 16 - 20
Monday - Friday, May 4 - 8
Saturday, May 8

Summer 2020

Monday, May 11
Monday, May 11
Monday, May 25
Friday, June 5
Monday, June 8
Monday, June 8
Friday, June 19
Monday, June 22
Thursday, July 2
Friday, July 3
Monday, July 6
Friday, July 31



NEW STUDENTS



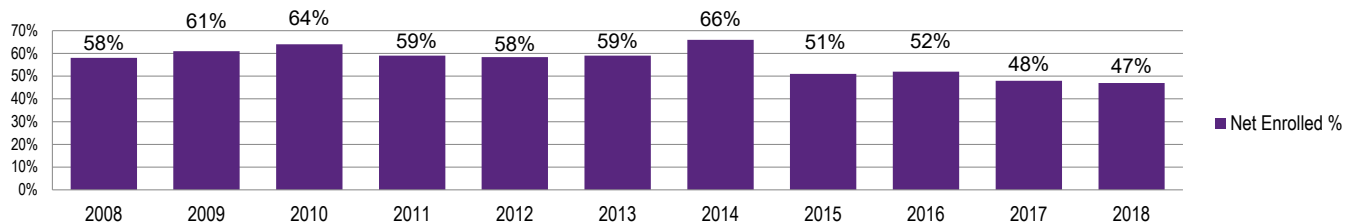
NEW STUDENTS

University of Northern Iowa
ORIENTATION

Fall 2018 New Students

							NET ENROLLED					
	Applications		Admissions		Net Enrolled*		Resident		Non-Resident		International	
	N	%	N	%	N	%	N	%	N	%	N	%
TOTAL	7,643		5,965		2,952		2,671		212		69	
Percent				78.0		38.6		90.5		7.2		2.3
Undergraduate												
New Freshmen	5,129	77.1	4,167	78.7	1,661	67.4	1,530	67.3	120	80.5	11	28.2
Transfers	1,521	22.9	1,126	21.3	802	32.6	745	32.7	29	19.5	28	71.8
Total	6,650		5,293		2,463		2,275		149		39	
Percent				79.6		46.5		92.4		6.0		1.6
Graduate												
Students	993		672		489		396		63		30	
Percent				67.7		72.8		81.0		12.9		6.1

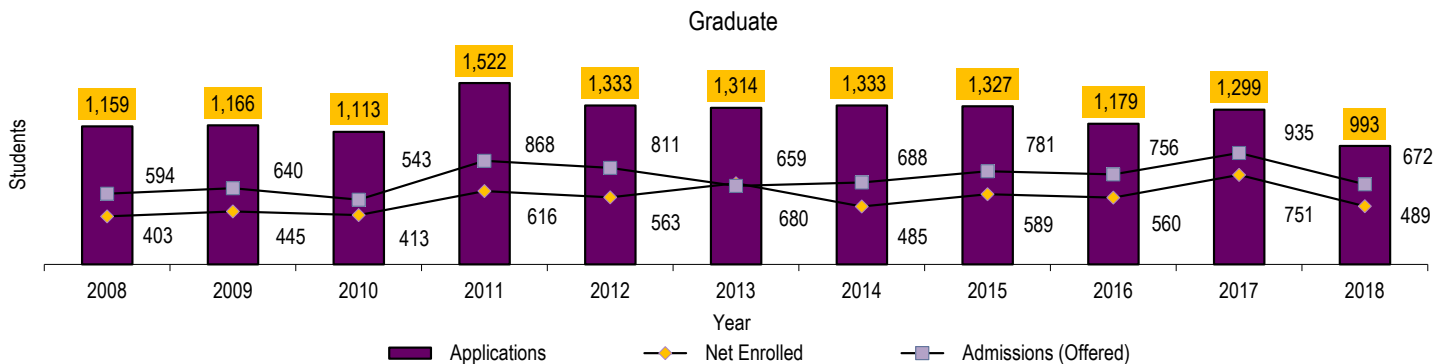
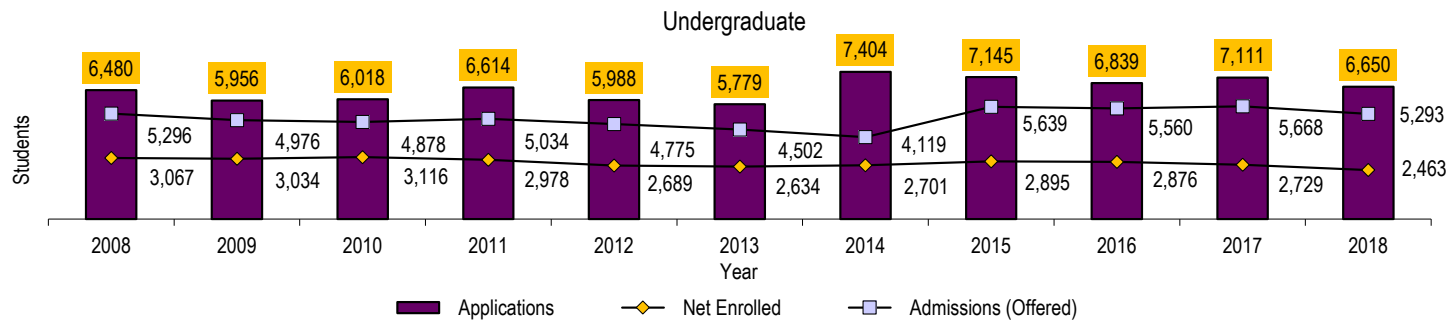
Net Enrolled % of Admitted



The undergraduate data does not reflect unclassified new students.

*Enrolled as % of applied

New Student Applications, Admissions and Enrolled Fall Semester 2008 - 2018



New Students Enrolled by Residence 2008 - 2018

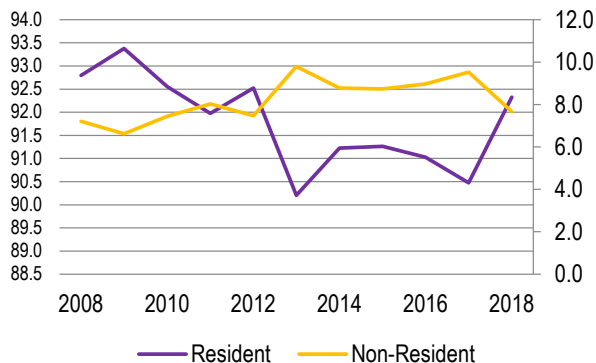
UNDERGRADUATE*

	Resident	Non-Resident	International Student
2008	2,846	178	43
2009	2,834	146	55
2010	2,884	158	74
2011	2,739	177	62
2012	2,488	156	45
2013	2,376	182	76
2014	2,464	159	78
2015	2,642	181	72
2016	2,618	188	70
2017	2,469	199	61
2018	2,274	150	39

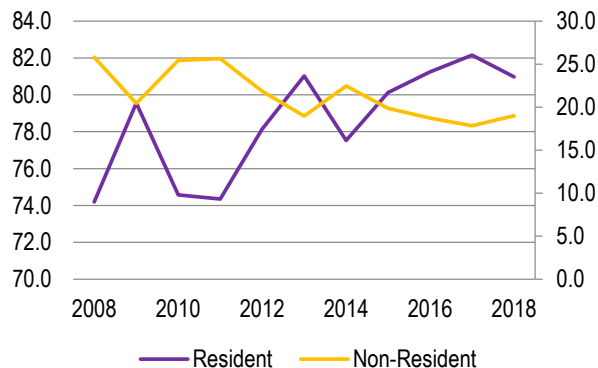
GRADUATE

	Resident	Non-Resident	International Student	Total	Annual Percent Change
2008	299	51	53	3,470	3.5
2009	354	50	41	3,480	0.3
2010	308	55	50	3,529	1.4
2011	458	121	37	3,594	1.8
2012	440	81	42	3,252	-9.5
2013	551	101	28	3,314	1.9
2014	376	81	28	3,186	-3.9
2015	472	81	36	3,484	9.4
2016	455	80	25	3,436	-1.4
2017	617	98	36	3,480	1.3
2018	396	63	30	2,952	-15.2

Undergraduate New Student %



Graduate New Student %

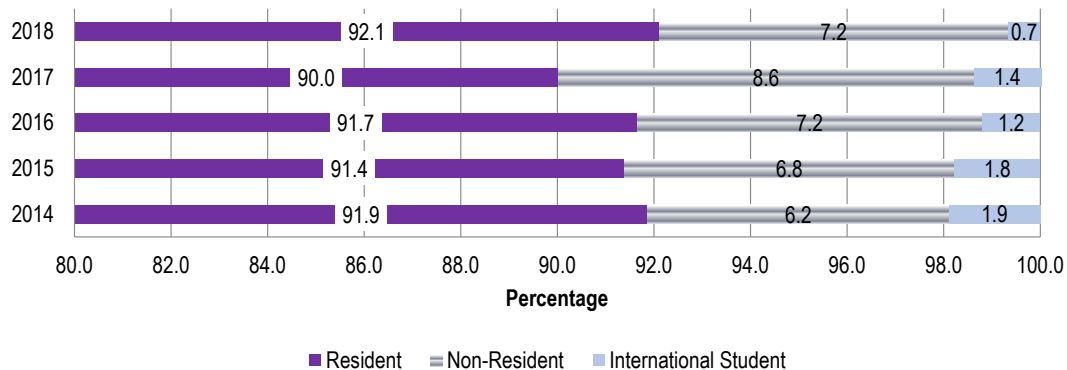


*New undergraduate students are only new freshmen and new transfers.

New Freshmen Enrollment by Residence 2014 - 2018

	2014		2015		2016		2017		2018	
	N	%	N	%	N	%	N	%	N	%
New Freshmen	1,797		1,916		2,000		1,834		1,661	
Annual Percent Change		5.5		6.6		4.4		-8.3		-9.4
Resident	1,651	91.9	1,751	91.4	1,833	91.7	1,651	90.0	1,530	92.1
Non-Resident	112	6.2	131	6.8	143	7.2	158	8.6	120	7.2
International Student	34	1.9	34	1.8	24	1.2	25	1.4	11	0.7

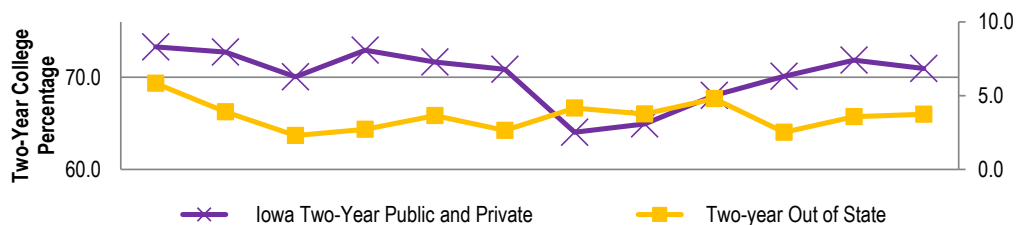
New Freshmen Enrollment by Residence



New Undergraduate Transfer Students by Type of Transfer College

	2008	2009	2010	2011	2012	2013	2014	2015	2016	2017	2018
TOTAL	1,052	1,088	1,138	1,041	985	912	904	979	876	895	802
Annual Percent Change	-12.4	3.4	4.6	-8.5	-5.4	-7.4	-0.9	8.3	-10.5	2.2	-10.4
Iowa Two-Year Public and Private	765	762	830	746	698	584	587	666	614	643	569
Iowa Area Community Colleges	757	762	828	746	698	584	587	665	614	643	569
Iowa Two-Year Private	8	0	2	0	0	0	0	1	0	0	0
Iowa Four-Year Public and Private	171	186	183	174	181	178	180	167	150	137	120
Iowa Four-Year Public											
Iowa State University	23	32	32	32	21	25	32	30	23	22	18
University of Iowa	46	42	51	51	35	30	32	22	14	28	24
University of Northern Iowa*					25	40	32	29	31	23	28
Subtotal	69	74	83	83	81	95	96	81	68	73	70
Iowa Four-Year Private	102	112	100	91	100	83	84	86	82	64	50
Non-Iowa (US) Total	116	140	125	121	106	150	137	146	70	78	74
Two-Year Out of State	41	25	31	38	26	38	34	47	22	32	30
Four-Year Out of State	75	115	94	83	80	112	103	99	48	46	44

Two-Year New Undergraduate Transfer Students



*Students transferring from UNI are returning UNI students pursuing a second BA or teacher license

New Freshmen ACT Composite Scores and High School Class Rank

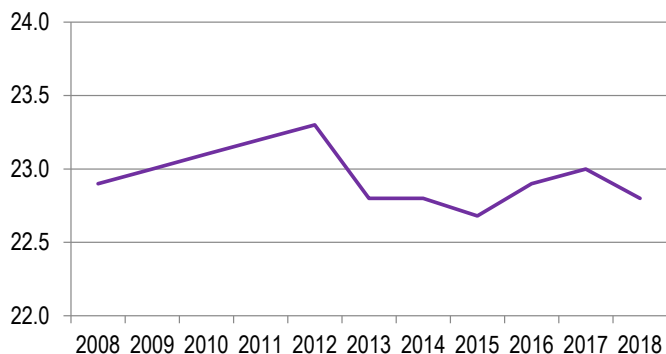
ACT Composite Scores

	Mean	75 th Percentile	25 th Percentile
2008	22.9	25.7	20.9
2009	23.0	25.9	21.1
2010	23.1	25.0	21.1
2011	23.2	25.0	21.0
2012	23.3	25.0	21.0
2013	22.8	24.0	20.0
2014	22.8	25.0	20.0
2015	22.7	25.0	20.0
2016	22.9	25.0	20.0
2017	23.0	26.0	20.0
2018	22.8	25.0	20.0

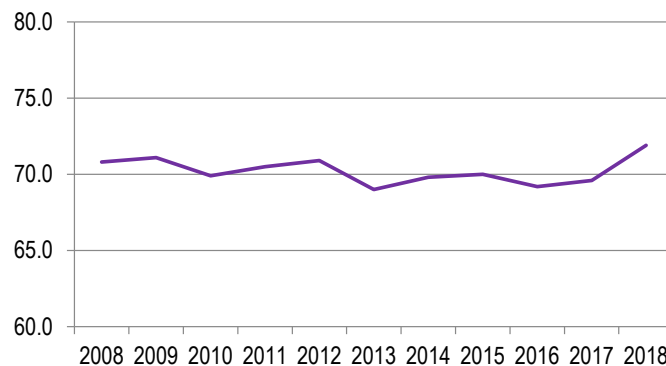
High School Rank

	Mean	Upper 10%	Upper 20%	Upper 50%
2008	70.8	18.6	37.6	85.3
2009	71.1	18.9	40.1	85.3
2010	69.9	17.6	36.2	84.0
2011	70.5	19.1	37.2	84.1
2012	70.9	20.0	38.9	84.6
2013	69.0	18.1	37.1	81.6
2014	69.8	17.0	35.9	83.1
2015	70.0	18.0	39.3	83.7
2016	69.2	17.3	36.9	81.4
2017	69.6	16.9	37.0	82.4
2018	71.9	20.4	40.6	86.0

ACT Mean Composite Score



High School Mean Rank

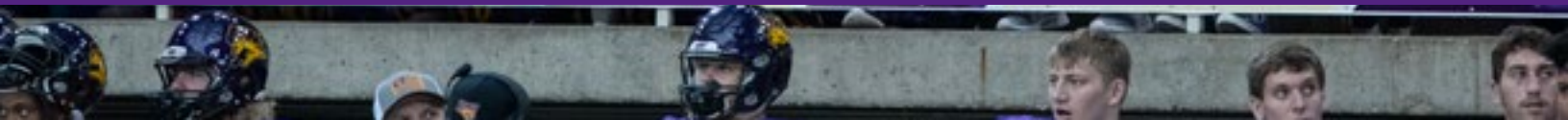




ENROLLMENT



ENROLLMENT



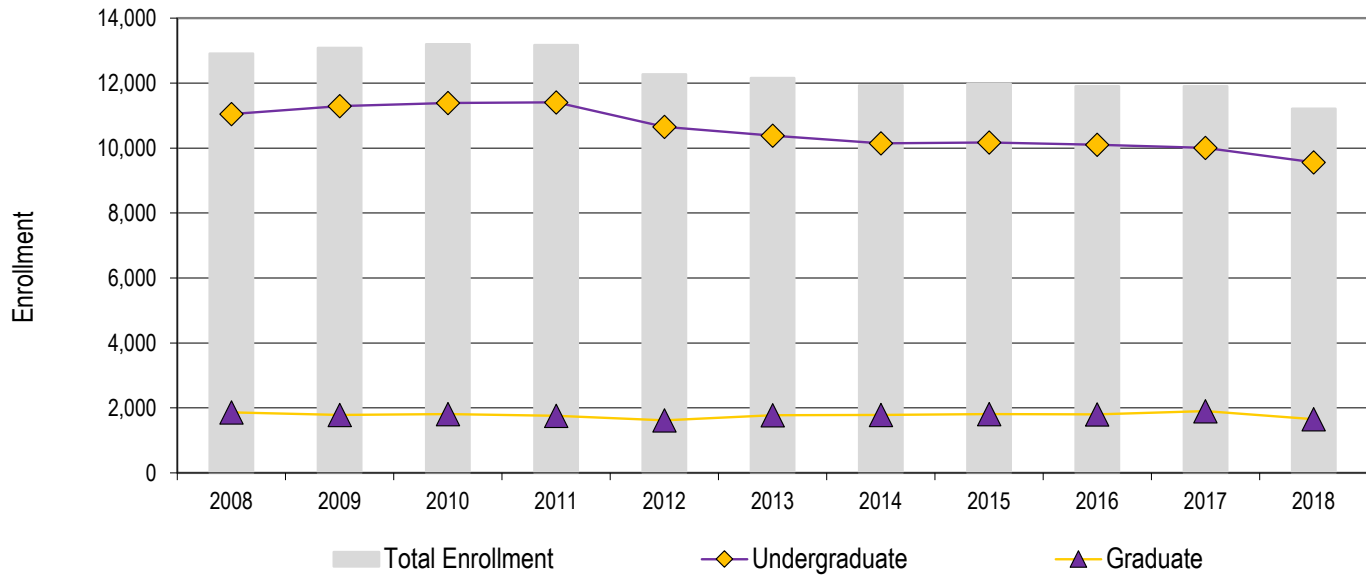
Fall 2018 Students Profile by College

	Total University	Business	Education	Humanities, Arts & Sciences	Social & Behavioral Sciences	No Specific College
TOTAL	11,212	2,081	2,624	3,485	1,835	1,187
Percent	100	19	23	31	16	11
Full-Time	9,264	1,811	2,134	3,067	1,601	651
Part-Time	1,948	270	490	418	234	536
Female	6,746	762	1,987	1,953	1,255	789
Male	4,466	1,319	637	1,532	580	398
Freshman	1,766	307	337	546	235	341
Sophomore	1,959	461	414	617	299	168
Junior	2,491	504	533	856	517	81
Senior	3,186	635	841	1,074	528	108
Unclassified	159					159
Graduate	1,651	174	499	392	256	330
International Students:						
Undergraduate	297	127	30	76	25	39
Graduate	183	113	24	31	4	11
1st Majors:						
Undergraduate	9,561	1,907	2,125	3,093	1,579	857
Graduate	1,651	174	499	392	256	330
2017-2018 Degrees Granted:						
Baccalaureate (Bachelor's)	2,184	440	503	740	412	89
Master's	508	54	144	192	104	14
Specialists	7		7			
Doctorates	23		22	1		

Headcount Enrollment 2008 - 2018

	UNDERGRADUATE			GRADUATE			Total	Annual Percent Change
	Full-Time	Part-Time	Total	Full-Time	Part-Time	Total		
2008	10,028	1,019	11,047	731	1,130	1,861	12,908	2.4
2009	10,279	1,015	11,294	781	1,005	1,786	13,080	1.3
2010	10,378	1,013	11,391	770	1,040	1,810	13,201	0.9
2011	10,209	1,199	11,408	742	1,018	1,760	13,168	-0.2
2012	9,679	976	10,655	682	936	1,618	12,273	-6.8
2013	9,330	1,050	10,380	638	1,141	1,779	12,159	-0.9
2014	9,122	1,020	10,142	597	1,189	1,786	11,928	-1.9
2015	9,127	1,042	10,169	562	1,250	1,812	11,981	0.4
2016	9,146	958	10,104	557	1,244	1,801	11,905	-0.6
2017	9,100	905	10,005	538	1,364	1,902	11,907	0.0
2018	8,745	816	9,561	519	1,132	1,651	11,212	-5.8

Headcount Enrollment by Level 2008 - 2018



Includes full-time and part-time students

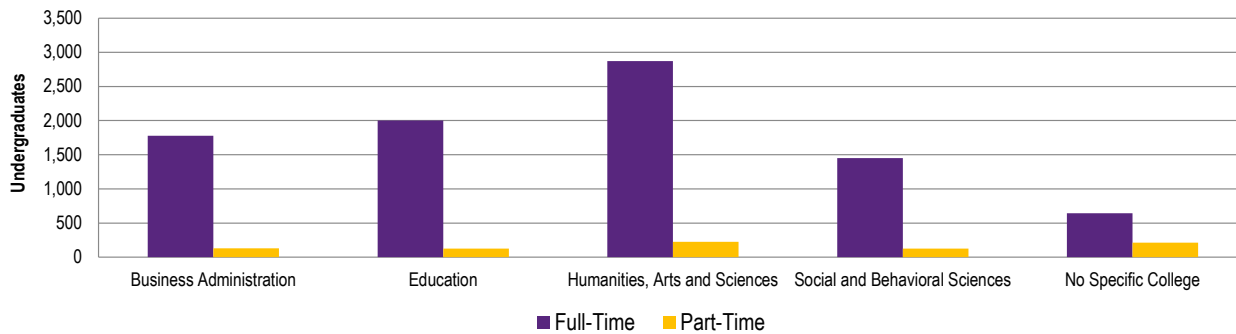
Undergraduate Enrollment by Age 2008 - 2018

Fall Semester	2008	2009	2010	2011	2012	2013	2014	2015	2016	2017	2018
Total Enrollment	11,047	11,294	11,391	11,408	10,655	10,380	10,142	10,169	10,104	10,005	9,561
Under 18	91	94	102	49	21	64	46	29	30	40	25
18	1,758	1,708	1,733	1,165	1,001	992	1,068	1,119	1,154	1,050	945
19	1,950	1,915	1,909	1,879	1,779	1,682	1,677	1,779	1,913	1,833	1,694
20	2,013	2,254	2,201	2,072	2,008	1,908	1,833	1,828	1,888	1,995	1,947
21	2,045	2,054	2,300	2,227	2,158	2,098	2,023	1,955	1,862	2,009	1,990
22	1,383	1,330	1,322	1,729	1,611	1,598	1,554	1,456	1,443	1,311	1,371
23	579	577	527	855	776	771	741	706	651	654	581
24	258	292	264	309	352	309	300	326	249	284	254
25	184	174	197	200	158	178	170	198	188	126	146
26	126	139	137	152	118	117	115	104	133	118	89
27	88	98	91	118	89	87	85	111	71	83	78
28	74	91	69	82	86	60	70	58	78	60	46
29	57	69	71	61	62	55	58	54	39	51	39
30-39	256	310	301	325	293	307	272	284	261	258	232
40-49	120	127	104	134	101	96	85	101	81	83	85
50-64	61	60	61	48	41	57	43	53	57	46	35
65 and older	4	2	2	3	1	1	2	8	6	4	4

Undergraduate Headcount by College Fall 2014 - 2018

	Full-Time					Part-Time				
	2014	2015	2016	2017	2018	2014	2015	2016	2017	2018
Total University	9,122	9,127	9,146	9,100	8,745	1,020	1,042	958	905	816
Business Administration	1,793	1,784	1,822	1,857	1,778	137	190	172	152	129
Education	2,029	2,140	2,074	2,119	2,001	127	120	121	105	124
Humanities, Arts and Sciences	3,073	3,030	3,090	3,042	2,870	330	297	290	294	223
Social and Behavioral Sciences	1,537	1,504	1,484	1,490	1,452	143	145	138	133	127
No Specific College	690	669	676	592	644	283	290	237	221	213

Fall 2018 Undergraduates by College



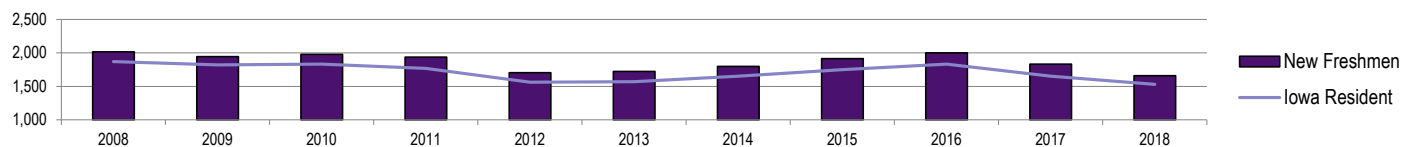
Fall 2018 Enrollment by Residence

	U.S. Iowa Resident		U.S. Non-Iowa Resident		International Student		TOTAL
	N	%	N	%	N	%	N
Enrollment	9,976	89.0	756	6.7	480	4.3	11,212
New Freshmen	1,530	92.1	120	7.2	11	0.7	1,661
Undergraduate	8,695	90.9	569	6.0	297	3.1	9,561
New Graduate	396	81.0	63	12.9	30	6.1	489
Graduate	1,281	77.6	187	11.3	183	11.1	1,651

Enrollment by Residence 2008 - 2018

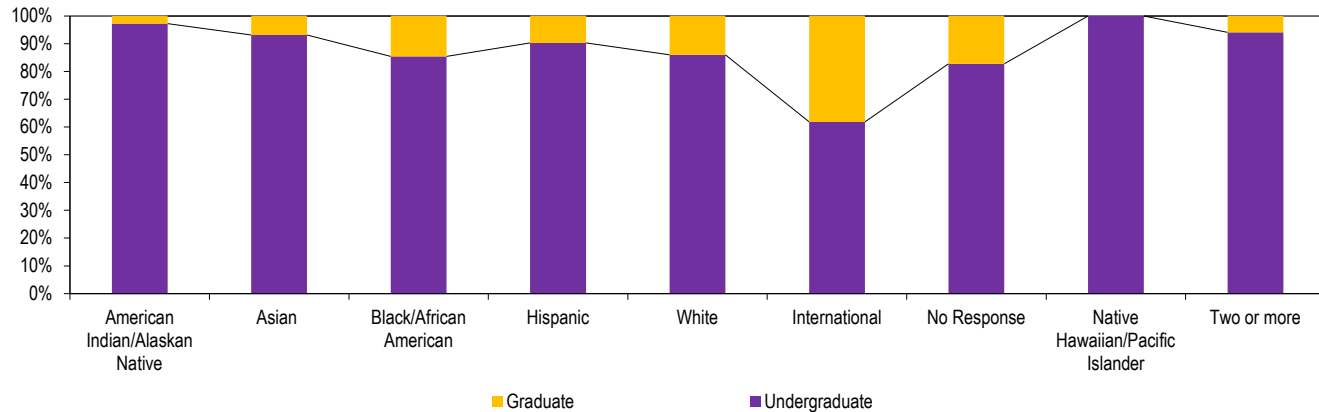
	2008	2009	2010	2011	2012	2013	2014	2015	2016	2017	2018	5 Yr % Change	10 Yr % Change
Fall Semester Enrollment	12,908	13,080	13,201	13,168	12,273	12,159	11,928	11,981	11,905	11,907	11,212	-7.8	-13.1
Iowa Resident	11,562	11,896	11,978	11,915	11,095	10,842	10,491	10,549	10,528	10,545	9,976	-8.0	-13.7
U.S., Non-Iowa Resident	882	731	743	765	724	797	811	816	829	815	756	-5.1	-14.3
International Student	464	453	480	488	454	520	626	616	548	547	480	-7.7	3.4
New Freshmen	2,015	1,946	1,978	1,937	1,704	1,722	1,797	1,916	2,000	1,834	1,661	-3.5	-17.6
Iowa Resident	1,870	1,820	1,833	1,769	1,563	1,568	1,651	1,751	1,833	1,651	1,530	-2.4	-18.2
U.S., Non-Iowa Resident	125	101	107	133	119	132	112	131	143	158	120	-9.1	-4.0
International Student	20	25	38	35	22	22	34	34	24	25	11	-50.0	-45.0
Undergraduate	11,047	11,294	11,391	11,408	10,655	10,380	10,142	10,169	10,104	10,005	9,561	-7.9	-13.5
Iowa Resident	10,185	10,469	10,532	10,522	9,806	9,411	9,052	9,083	9,096	9,045	8,695	-7.6	-14.6
U.S., Non-Iowa Resident	598	541	526	541	530	578	603	605	604	587	569	-1.6	-4.8
International Student	264	284	333	345	319	391	487	481	404	373	297	-24.0	12.5
Graduate	1,861	1,786	1,810	1,760	1,618	1,779	1,786	1,812	1,801	1,902	1,651	-7.2	-11.3
Iowa resident	1,377	1,427	1,446	1,393	1,289	1,431	1,439	1,466	1,432	1,500	1,281	-10.5	-7.0
U.S., Non-Iowa Resident	284	190	217	224	194	219	208	211	225	228	187	-14.6	-34.2
International Student	200	169	147	143	135	129	139	135	144	174	183	41.9	-8.5

New Freshmen



Fall 2018 Enrollment by Race/Ethnicity

	American Indian/ Alaskan Native		Asian		Black/ African American		Hispanic		White		International		No Response		Native Hawaiian/ Pacific Islander		Two or More	
	N	%	N	%	N	%	N	%	N	%	N	%	N	%	N	%	N	%
Enrollment	36	100	146	100	310	100	411	100	9,079	100	480	100	523	100	7	100	220	100
Undergraduate	35	97.2	136	93.2	265	85.5	371	90.3	7,810	86.0	297	61.9	433	82.8	7	100.0	207	94.1
Graduate	1	2.8	10	6.8	45	14.5	40	9.7	1,269	14.0	183	38.1	90	17.2	0	0.0	13	5.9
Percentage		0.3		1.3		2.8		3.7		81.0		4.3		4.7		0.1		2.0



Undergraduate 9,561
Graduate 1,651

Minority Student Enrollment 2008 - 2018

	UNDERGRADUATE							GRADUATE						
	American Indian/ Alaskan Native	Asian/ Pacific Islander*	Black/ African American	Hispanic/ Latino*	Native Hawaiian/ Pacific Islander	Two or More	Total	American Indian/ Alaskan Native	Asian/ Pacific Islander*	Black/ African American	Hispanic/ Latino*	Native Hawaiian/ Pacific Islander	Two or More	Total
2008	28	121	300	199			648	6	26	92	38			162
2009	20	117	305	243	5	77	767	3	19	72	39	0	4	137
2010	21	105	303	232	4	103	768	4	19	80	44	0	7	154
2011	17	118	300	257	2	121	815	7	26	66	41	1	11	152
2012	21	107	300	280	4	143	855	3	21	67	33	0	10	134
2013	19	87	279	289	5	168	847	5	20	62	33	2	11	133
2014	20	90	285	339	7	195	936	5	18	54	38	0	15	130
2015	16	115	287	350	7	213	988	6	18	65	29	0	17	135
2016	28	128	273	388	9	192	1,018	5	13	57	39	0	23	137
2017	34	136	271	391	7	203	1,042	2	10	46	40	0	18	116
2018	35	136	265	371	7	207	1,021	1	10	45	40	0	13	109

Includes all international students; other categories include American citizens, immigrants, asylees, and refugees only.

*The Race/Ethnicity reporting was changed in Fall 2009 semester to implement the new U.S. Department of Education guidelines.

Fall On-Campus Headcount and Full-Time Equivalent (FTE) Enrollment by Level 2008 - 2018

	Headcount - Total									FTE Enrollment - Total								
	Undergraduate						Graduate			Undergraduate						Graduate		
	F	S	Jr	Sr	Un-Classified	Total	Master's	Advanced	Total	F	S	Jr	Sr	Un-Classified	Total	Master's	Advanced	Total
2008	2,528	2,100	2,766	3,416	237	11,047	1,369	492	1,861	2,343	2,003	2,563	3,010	94	10,013	1,080	272	1,352
2009	2,377	2,214	2,971	3,482	250	11,294	1,300	486	1,786	2,172	2,109	2,772	3,057	93	10,203	1,098	270	1,368
2010	2,340	2,181	3,037	3,574	259	11,391	1,289	521	1,810	2,139	2,068	2,827	3,159	108	10,301	1,076	304	1,380
2011	2,388	2,173	2,823	3,872	152	11,408	1,236	524	1,760	2,060	2,031	2,562	3,342	60	10,055	1,046	292	1,338
2012	2,091	2,096	2,737	3,589	142	10,655	1,161	457	1,618	1,891	1,999	2,533	3,153	54	9,630	977	266	1,243
2013	2,037	1,902	2,662	3,569	210	10,380	1,283	496	1,779	1,874	1,810	2,485	3,114	60	9,343	991	282	1,273
2014	2,047	1,928	2,437	3,470	260	10,142	1,232	554	1,786	1,899	1,818	2,260	3,065	77	9,119	907	285	1,192
2015	2,174	1,933	2,492	3,335	235	10,169	1,237	575	1,812	2,010	1,814	2,312	2,937	78	9,151	914	280	1,194
2016	2,232	2,104	2,430	3,177	161	10,104	1,258	543	1,801	2,063	1,980	2,263	2,785	49	9,140	932	233	1,165
2017	1,960	2,146	2,568	3,161	170	10,005	1,360	542	1,902	1,860	2,028	2,411	2,794	43	9,136	885	263	1,148
2018	1,766	1,959	2,491	3,186	159	9,561	1,199	452	1,651	1,709	1,867	2,366	2,834	44	8,820	858	225	1,083

First Major Only by College and Level Fall 2014 - 2018

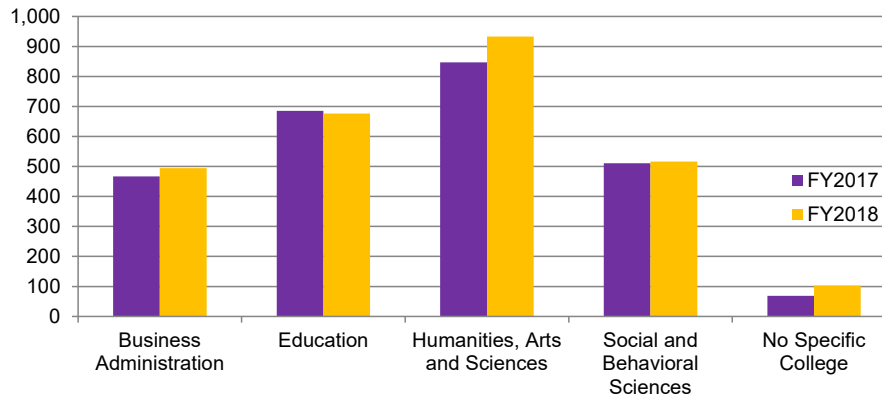
	Undergraduate					Graduate				
	2014	2015	2016	2017	2018	2014	2015	2016	2017	2018
Total University	10,142	10,169	10,104	10,005	9,561	1,786	1,812	1,801	1,902	1,651
Business Administration	1,930	1,974	1,994	2,009	1,907	84	73	96	155	174
Education	2,156	2,260	2,195	2,224	2,125	619	585	556	545	499
Humanities, Arts and Sciences	3,403	3,327	3,380	3,336	3,093	433	503	440	411	392
Social and Behavioral Sciences	1,680	1,649	1,622	1,623	1,579	231	231	246	248	256
No Specific College	973	959	913	813	857	419	420	463	543	330

Annual Degrees Awarded by Level 2008 - 2018

	2007- 2008	2008- 2009	2009- 2010	2010- 2011	2011- 2012	2012- 2013	2013- 2014	2014- 2015	2015- 2016	2016- 2017	2017- 2018	5 Yr % Change	10 Yr % Change
Total Degrees Awarded	2,720	2,751	2,934	2,725	3,034	2,875	2,897	2,768	2,692	2,579	2,722	-5.3	0.1
Baccalaureate	2,221	2,268	2,347	2,198	2,440	2,349	2,357	2,303	2,166	2,126	2,184	-7.0	-1.7
Master's	474	467	561	509	572	483	512	446	503	431	508	5.2	7.2
Specialists	9	6	6	5	10	13	8	5	9	8	7	-46.2	-22.2
Doctorates	16	10	20	13	12	30	20	14	14	14	23	-23.3	43.8
Undergraduate Degrees Awarded	2,221	2,268	2,347	2,198	2,440	2,349	2,357	2,303	2,166	2,126	2,184	-7.0	-1.7
Bachelor of Arts	2,121	2,148	2,201	2,079	2,293	2,227	2,209	2,142	2,025	1,949	1,991	-10.6	-6.1
Bachelor of Fine Arts	8	3	8	6	11	11	11	8	7	6	7	-36.4	-12.5
Bachelor of Music	14	22	27	15	22	18	34	25	21	33	25	38.9	78.6
Bachelor of Science	64	76	84	84	98	79	86	91	76	92	96	21.5	50.0
Bachelor of Liberal Studies	14	19	27	14	16	14	17	37	37	46	65	364.3	364.3
Graduate Degrees Awarded	499	483	587	527	594	526	540	465	526	453	538	2.3	7.8
Master of Accounting	23	36	29	21	25	20	18	23	13	20	18	-10.0	-21.7
Master of Arts in Education	119	99	147	105	121	104	118	112	104	80	57	-45.2	-52.1
Master of Arts	208	204	243	255	284	235	242	190	285	233	304	29.4	46.2
Master of Business Administration	42	42	40	31	27	28	36	38	30	18	36	28.6	-14.3
Master of Music	22	14	24	10	26	11	15	13	17	17	25	127.3	13.6
Master of Public Policy	16	10	4	10	11	9	11	12	0	0	10	11.1	-37.5
Master of Science	10	16	15	19	21	22	23	26	17	23	17	-22.7	70.0
Master of Social Work	29	27	40	41	40	33	37	32	34	37	38	15.2	31.0
Professional Science Master's	5	19	19	17	17	21	12	0	3	3	3	-85.7	-40.0
Specialist in Education	9	6	6	5	10	13	8	5	9	8	7	-46.2	-22.2
Doctor of Technology/Doctor of Industrial Technology	1	1	2	1	1	4	6	2	0	2	1	-75.0	0.0
Doctor of Education	15	9	18	12	11	26	14	12	14	12	22	-15.4	46.7

Degrees Granted by College 2016 - 2017 and 2017 - 2018

	Baccalaureates				Master's				Specialists				Doctorates			
	2016-2017		2017-2018		2016-2017		2017-2018		2016-2017		2017-2018		2016-2017		2017-2018	
	N	%	N	%	N	%	N	%	N	%	N	%	N	%	N	%
Total Degrees Granted	2,126	100	2,184	100	431	100	508	100	8	100	7	100	14	100	23	100
Business Administration	429	20.2	440	20.1	38	8.8	54	10.6	0	0.0	0	0.0	0	0.0	0	0.0
Education	494	23.2	503	23.0	171	39.7	144	28.3	8	100.0	7	100.0	12	85.7	22	95.7
Humanities, Arts and Sciences	701	33.0	740	33.9	144	33.4	192	37.8	0	0.0	0	0.0	2	14.3	1	4.3
Social and Behavioral Sciences	434	20.4	412	18.9	77	17.9	104	20.5	0	0.0	0	0.0	0	0.0	0	0.0
No Specific College	68	3.2	89	4.1	1	0.2	14	2.8	0	0.0	0	0.0	0	0.0	0	0.0



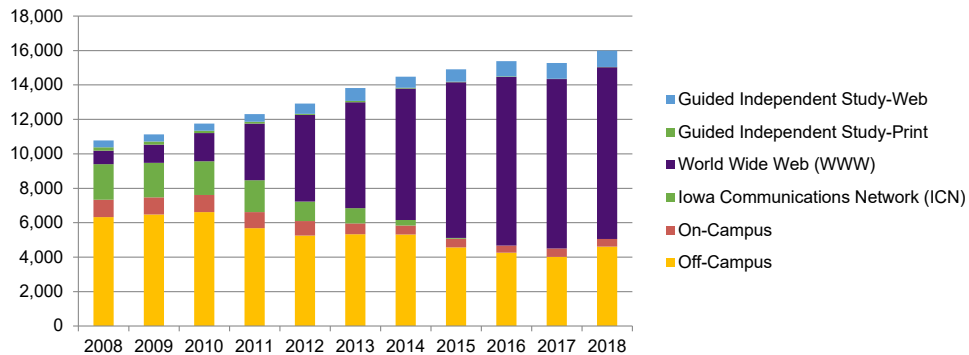
17-18 Degrees by College
17-18 2,722 Degrees Granted

Undergraduate Retention and Graduation Rates 1998 - 2017

Admit Year	Total First Time Freshmen	Continuing 2nd Year		Graduating 4th Year		Graduating 6th Year	
		N	%	N	%	N	%
1998	1,982	1,605	81.0	588	29.7	1,273	64.2
1999	2,124	1,729	81.4	713	33.6	1,379	64.9
2000	2,218	1,863	84.0	756	34.1	1,492	67.3
2001	2,064	1,681	81.4	672	32.6	1,348	65.3
2002	1,822	1,469	80.6	614	33.7	1,152	63.2
2003	1,740	1,417	81.4	618	35.5	1,160	66.7
2004	1,652	1,337	80.9	584	35.4	1,110	67.2
2005	1,694	1,390	82.1	616	36.4	1,130	66.7
2006	1,684	1,386	82.3	648	38.5	1,117	66.3
2007	1,922	1,608	83.7	708	36.8	1,278	66.5
2008	1,976	1,627	82.3	747	37.8	1,261	63.8
2009	1,917	1,582	82.5	721	37.6	1,296	67.6
2010	1,934	1,586	82.0	759	39.2	1,258	65.0
2011	1,897	1,543	81.3	756	39.9	1,277	67.3
2012	1,678	1,391	82.9	671	40.0	1,096	65.3
2013	1,689	1,430	84.7	731	43.3		
2014	1,762	1,411	80.1	715	40.6		
2015	1,874	1,609	85.9				
2016	1,963	1,593	81.2				
2017	1,813	1,515	83.6				

Continuing Education Credit Enrollment Trends 2008 - 2018

	2007- 2008	2008- 2009	2009- 2010	2010- 2011	2011- 2012	2012- 2013	2013- 2014	2014- 2015	2015- 2016	2016- 2017	2017- 2018
Total	10,783	11,127	11,749	12,302	12,924	13,818	14,481	14,906	15,378	15,271	15,987
Annual Percent Change	8.0	3.2	5.6	4.7	5.1	6.9	4.8	2.9	3.2	-0.7	4.7
Off-Campus	6,330	6,477	6,617	5,690	5,257	5,336	5,313	4,561	4,260	4,014	4,611
On-Campus	1,001	995	989	921	846	616	530	514	416	493	446
Iowa Communications Network (ICN)	2,070	2,009	1,967	1,856	1,123	898	320	35	0	0	0
World Wide Web (WWW)	782	1,044	1,633	3,289	5,041	6,153	7,627	9,043	9,792	9,836	9,975
Guided Independent Study-Print	200	197	130	109	63	67	41	40	28	20	8
Guided Independent Study-Web	400	405	413	437	594	748	650	713	882	908	947

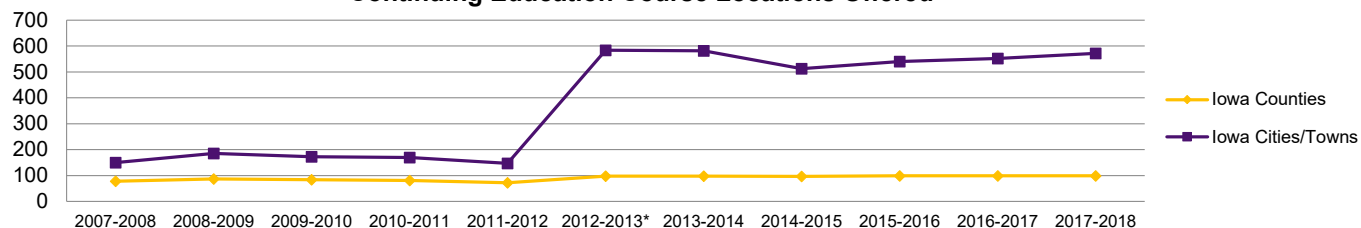


Source: Continuing Education and Special Programs

Continuing Education Courses Offered 2008 - 2018

	Iowa Counties	Iowa Cities/Towns*	Number of Off-Campus Degree and Certificate Programs
2007-2008	78	150	21
2008-2009	87	185	23
2009-2010	84	173	24
2010-2011	81	170	24
2011-2012	72	147	25
2012-2013*	98	584	27
2013-2014	98	582	32
2014-2015	97	513	37
2015-2016	99	540	44
2016-2017	99	552	42
2017-2018	99	572	40

Continuing Education Course Locations Offered

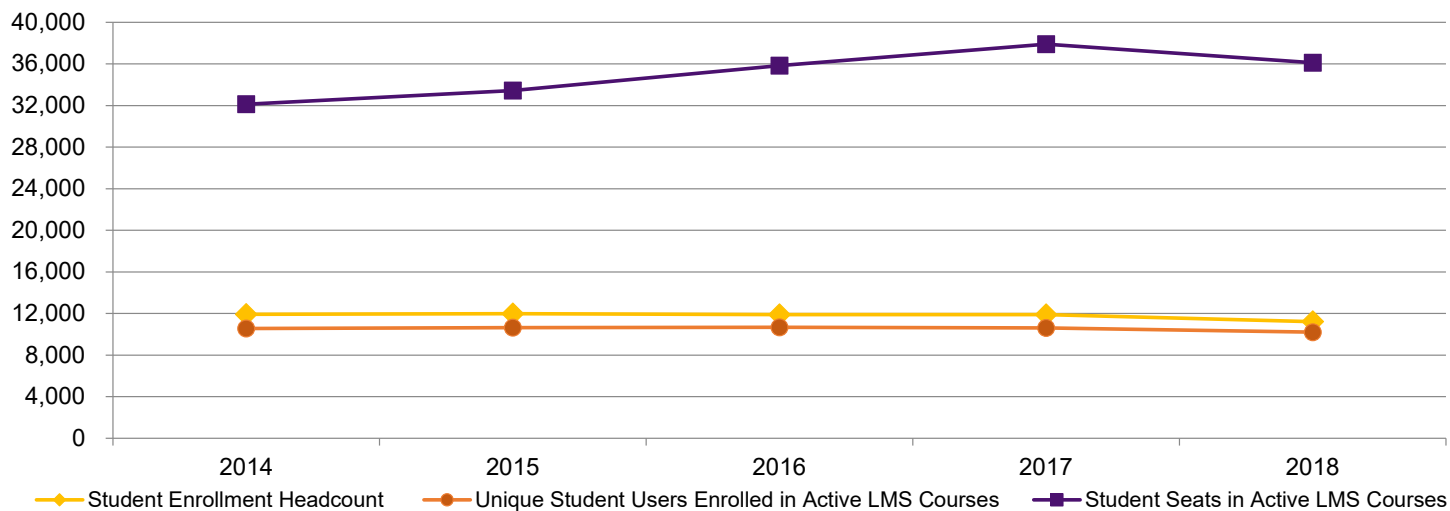


Source: Continuing Education and Special Programs

*Effective 2012-2013, Iowa Cities/Towns reflects locations in which students enrolled in courses offered at an off-campus location, an ICN location, in a guided independent study course, or in an online (semester) course. Prior to 2012-2013, locations reflected only students enrolled in off-campus, ICN, or guided independent study courses. Including city/town locations for students enrolled in online courses brings reporting in line with practices at the other Iowa Regent universities.

Web-Based Learning Management System (LMS) 2014 - 2018

	2014	2015	Fall 2016	2017	2018
Student Enrollment Headcount	11,928	11,981	11,905	11,907	11,212
Unique Student Users Enrolled in Active LMS Courses	10,567	10,635	10,673	10,618	10,207
Student Seats in Active LMS Courses	32,122	33,443	35,838	37,900	36,120
Instructors in Active LMS Courses	547	564	600	605	610
Academic Sections Active in LMS	1,488	1,536	1,589	1,584	1,601



Fall Semester Residence Hall Occupancy by Legal Sex and Level 2008 - 2018

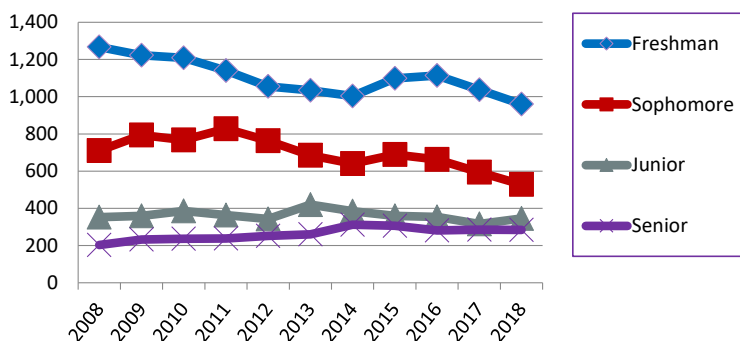
Female

	Freshman	Sophomore	Junior	Senior	Unclassified & Graduates
2008	1,267	710	353	203	104
2009	1,223	794	359	233	65
2010	1,209	767	386	237	101
2011	1,141	828	363	238	78
2012	1,055	763	343	252	84
2013	1,034	685	420	261	88
2014	1,003	640	385	312	109
2015	1,099	689	359	306	151
2016	1,114	662	354	281	139
2017	1,037	594	316	286	51
2018	960	528	345	284	64

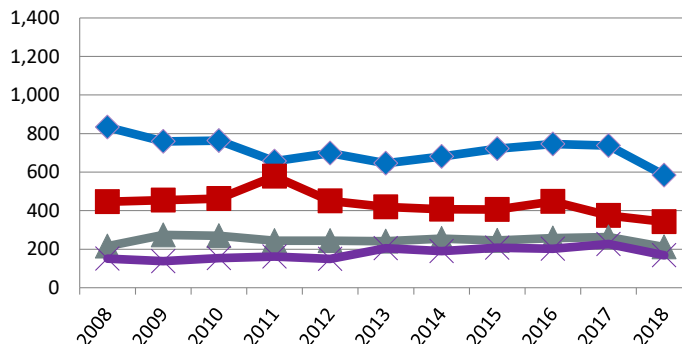
Male

	Freshman	Sophomore	Junior	Senior	Unclassified & Graduates
2008	833	446	215	151	90
2009	759	455	274	138	69
2010	763	463	270	153	79
2011	657	578	244	162	70
2012	698	450	244	150	84
2013	646	419	241	205	62
2014	681	407	255	190	106
2015	721	406	245	208	153
2016	746	448	258	202	148
2017	737	375	263	227	39
2018	584	342	211	169	71

Undergraduates - Female



Undergraduates - Male



Source: Department of Residence



ALUMNI



ALUMNI



Total Alumni by College 2014 - 2018

College	2014		2015		2016		2017		2018	
	N	%	N	%	N	%	N	%	N	%
Subtotal Alumni*	115,405		117,099		119,089		121,173		123,217	
TOTAL Living Alumni**	111,241		112,926		114,716		116,766		118,729	
Business Administration	22,864	19.8	23,225	19.8	23,624	19.8	24,009	19.8	24,422	19.8
Education***	34,819	30.2	34,965	29.9	35,305	29.6	35,834	29.6	36,338	29.5
Humanities, Arts and Sciences	35,155	30.5	35,848	30.6	36,555	30.7	37,211	30.7	37,880	30.7
Social and Behavioral Sciences	18,941	16.4	19,376	16.5	19,809	16.6	20,232	16.7	20,611	16.7
College Unassigned/Interdisciplinary****	3,626	3.1	3,685	3.1	3,796	3.2	3,887	3.2	3,966	3.2

Source: *University Advancement*

* Alumni having earned degrees in different colleges are counted once in each college; alumni earning multiple degrees in the same college are counted only once for that college

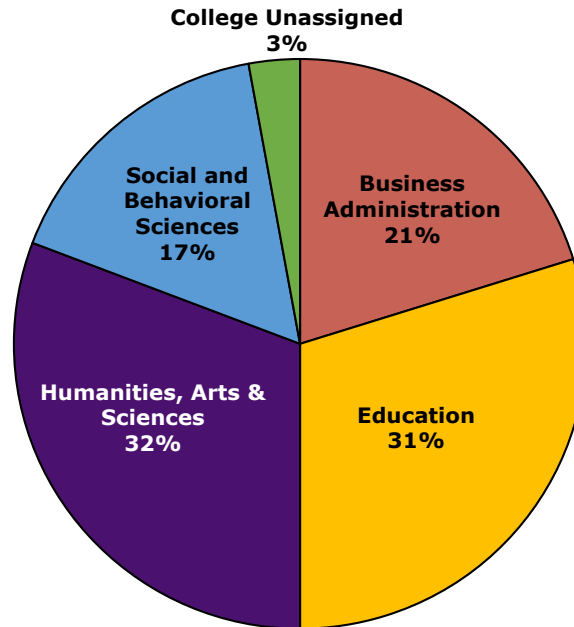
** Grads counted a single time even when earning multiple degrees

*** Includes 2-Year Teaching Certificates and those earning ASC (26P) (Superintendency & Principalship) Certification

**** Includes Individual Studies, General Studies, Liberal Studies, Interdisciplinary majors; college unassigned

Updated October 2018; includes grads through August 2018

Total Living Alumni by College



Alumni = 118,729

Alumni by State 2018

State	Alumni	State	Alumni
Alabama	201	Montana	173
Alaska	134	Nebraska	1,789
Arizona	2,171	Nevada	369
Arkansas	318	New Hampshire	77
California	2,467	New Jersey	183
Colorado	2,812	New Mexico	248
Connecticut	126	New York	493
Delaware	40	North Carolina	753
Florida	1,826	North Dakota	120
Georgia	708	Ohio	614
Hawaii	146	Oklahoma	324
Idaho	176	Oregon	566
Illinois	4,005	Pennsylvania	376
Indiana	697	Rhode Island	34
Iowa	74,182	South Carolina	319
Kansas	1,461	South Dakota	574
Kentucky	227	Tennessee	559
Louisiana	146	Texas	3,352
Maine	49	Utah	161
Maryland	311	Vermont	39
Massachusetts	226	Virginia	694
Michigan	644	Washington	826
Minnesota	5,494	West Virginia	32
Mississippi	71	Wisconsin	2,420
Missouri	2,090	Wyoming	128
		District of Columbia	88

Source: *University Advancement*

As of October 2018 including Summer 2018 grads

Alumni by Iowa County 2018

County	Alumni	County	Alumni	County	Alumni	County	Alumni
Adair	58	Decatur	35	Johnson	2,631	Pocahontas	121
Adams	25	Delaware	514	Jones	413	Polk	12,969
Allamakee	297	Des Moines	391	Keokuk	159	Pottawattamie	639
Appanoose	90	Dickinson	404	Kossuth	400	Poweshiek	465
Audubon	65	Dubuque	2,262	Lee	256	Ringgold	36
Benton	796	Emmet	111	Linn	7,042	Sac	177
Black Hawk	12,387	Fayette	593	Louisa	106	Scott	2,809
Boone	388	Floyd	561	Lucas	60	Shelby	106
Bremer	1,989	Franklin	246	Lyon	45	Sioux	194
Buchanan	1,082	Fremont	33	Madison	263	Story	1,498
Buena Vista	225	Greene	167	Mahaska	245	Tama	670
Butler	843	Grundy	908	Marion	496	Taylor	28
Calhoun	226	Guthrie	177	Marshall	954	Union	89
Carroll	462	Hamilton	356	Mills	89	Van Buren	49
Cass	161	Hancock	228	Mitchell	323	Wapello	338
Cedar	318	Hardin	700	Monona	54	Warren	1,031
Cerro Gordo	1,453	Harrison	89	Monroe	83	Washington	395
Cherokee	141	Henry	236	Montgomery	57	Wayne	39
Chickasaw	505	Howard	275	Muscatine	582	Webster	667
Clarke	62	Humboldt	239	O'Brien	168	Winnebago	309
Clay	319	Ida	92	Osceola	34	Winneshiek	600
Clayton	451	Iowa	293	Page	90	Woodbury	653
Clinton	664	Jackson	340	Palo Alto	232	Worth	190
Crawford	140	Jasper	544	Plymouth	276	Wright	308
Dallas	1,601	Jefferson	135				
Davis	67					TOTAL	74,182

Source: University Advancement October 2018

Post-Graduation Status of 2016 - 2017 and 2017 - 2018 Bachelor's Degree Recipients

College	Graduates	No Information	Total Responding	Employed*	Continuing Education	Undergrad Education
2016 - 17						
Business	422	56	366	329	16	4
Education	493	55	438	360	44	5
Humanities, Arts and Sciences	802	138	664	471	139	5
Social & Behavioral Sciences	444	93	351	241	80	3
TOTAL	2,161	342	1,819	1,401	279	17
			(1,819 of 2,161)	(1,401 of 1,819)	(279 of 1,819)	(17 of 1,819)
			84.2%	77.0%	15.3%	0.93%
2017 - 18						
Business	424	32	386	320	42	
Education	504	129	375	476	140	
Humanities, Arts and Sciences	740	77	663	375	67	
Social & Behavioral Sciences	410	59	351	230	92	
TOTAL	2,078	297	1,775	1,401	341	0
			(1,775 of 2,078)	(1,401 of 1,775)	(341 of 1,775)	(0 of 1,775)
			85.4%	78.9%	19.2%	0.00%

Source: Career Services

*Method: Data was collected from one month prior to six months after graduation. Collection included surveys, employer reports and social media updates.

Post-Graduation Status of 2016 - 2017 and 2017 - 2018 Graduate Degree Recipients

College	Graduates	No Information	Total Responding	Employed*	Continuing Education	Other
2016 - 2017						
Business	16	2	14	10	0	4
Education	98	24	74	53	2	19
Humanities, Arts and Sciences	81	9	72	48	9	15
Social & Behavioral Sciences	47	12	35	19	5	11
Interdisciplinary	5	1	4	4	0	0
TOTAL	247	48	199	134	16	49
			(199 of 247)	(134 of 199)	(16 of 199)	(49 of 199)
			80.6%	67.3%	8.0%	24.6%
2017 - 2018						
Business	15	3	12	9	1	2
Education	90	13	77	52	4	21
Humanities, Arts and Sciences	85	16	69	45	6	18
Social & Behavioral Sciences	47	10	37	22	3	12
Interdisciplinary	1	0	1	1	0	0
TOTAL	238	42	196	129	14	53
			(196 of 238)	(129 of 196)	(14 of 196)	(53 of 196)
			82.4%	65.8%	7.1%	27.0%

Method: Data was collected through a survey of graduates via students' university e-mails.

*79.5% of respondents employed in Iowa 2017 - 2018

Undergraduate Plans for Further Education 2017 - 2018

College	Completed Survey Item		Accepted to a Graduate/Professional Program		Currently Applying to Programs		Accepted to Another Undergraduate Program	
	N	%	N	%	N	%	N	%
TOTAL	1,361	100	110	100	109	100	8	100
Business Administration	293	21.5%	13	11.8%	9	8.3%	4	50.0%
Education	305	22.4%	14	12.7%	27	24.8%	1	12.5%
Humanities, Arts and Sciences	464	34.1%	58	52.7%	35	32.1%	1	12.5%
Social and Behavioral Sciences	260	19.1%	24	21.8%	35	32.1%	2	25.0%
Interdisciplinary	39	2.9%	1	0.9%	3	2.8%	0	0.0%
			(110 of 1,361)		(109 of 1,361)		(8 of 1,361)	
			8.1%		8.0%		0.6%	

Data collected from December 2017 and May 2018 Graduating Senior Surveys

Graduate Plans for Further Education 2017 - 2018

College	Completed Graduate Program Survey		Accepted to a Graduate/Professional Program		Currently Applying to Programs		No Response for Further Education	
	N	%	N	%	N	%	N	%
TOTAL	238	100%	11	4.6%	4	1.7%	223	93.7%
Business Administration	15	6.3%	0	0.0%	1	25.0%	14	6.3%
Education	90	37.8%	3	27.3%	1	25.0%	86	38.6%
Humanities, Arts and Sciences	85	35.7%	6	54.5%	1	25.0%	78	35.0%
Social and Behavioral Sciences	47	19.7%	2	18.2%	1	25.0%	44	19.7%
Interdisciplinary	1	0.4%	0	0.0%	0	0.0%	1	0.4%
			(11 of 238)		(4 of 238)		(223 of 238)	
			4.6%		1.7%		93.7%	

Data collected from December 2017 and May 2018 Graduate Program Surveys



FACULTY & STAFF



FACULTY & STAFF

Fall 2018 Faculty Profile by College

	Total University	Business	Education	Humanities, Arts & Sciences	Social & Behavioral Sciences	Continuing Education No Specific	Library
Faculty	721	81	158	323	130	14	15
Full-Time	539	58	123	246	91	6	15
Part-Time	182	23	35	77	39	8	0
Female	372	25	109	149	67	10	12
Male	349	56	49	174	63	4	3
American Indian/Alaskan Native	1	0	1	0	0	0	0
Asian/Pacific Islander	58	16	5	26	10	0	1
Black/African American	18	3	4	8	3	0	0
Hispanic/Latino	20	1	3	12	3	1	0
Native Hawaiian/Other Pacific Islander	1	0	0	1	0	0	0
Two or more races	5	1	1	2	1	0	0
White	618	60	144	274	113	13	14
Professors	182	23	25	91	39	2	2
Associate Professors	184	14	37	87	37	3	6
Assistant Professors	112	13	27	46	18	1	7
Instructors/Lecturers	243	31	69	99	36	8	0
Tenured	381	36	78	178	75	6	8
Tenure-Track	115	14	28	47	19	0	7
Non Tenure-Track	225	31	52	98	36	8	0

Includes Academic Department Heads and other Administrators with Faculty Rank but excludes Deans and above

Fall 2018 Faculty by College, Legal Sex and Tenure Status

	Full-Time		Part-Time		Total	
	Female	Male	Female	Male	Female	Male
Business	18	40	7	16	25	56
Tenured	7	23	1	5	8	28
Tenure-Track	4	10	0	0	4	10
Non Tenure-Track	7	7	6	11	13	18
Education	83	40	26	9	109	49
Tenured	49	21	4	4	53	25
Tenure-Track	16	12	0	0	16	12
Non Tenure-Track	18	7	22	5	40	12
Humanities, Arts and Sciences	103	143	46	31	149	174
Tenured	61	103	7	7	68	110
Tenure-Track	23	24	0	0	23	24
Non Tenure-Track	19	16	39	24	58	40
Social and Behavioral Sciences	42	49	25	14	67	63
Tenured	26	43	5	1	31	44
Tenure-Track	13	6	0	0	13	6
Non Tenure-Track	3	0	20	13	23	13

Includes Academic Department Heads and other Administrators with Faculty Rank but excludes Deans and above

Continued on next page

Fall 2018 Faculty by College, Legal Sex and Tenure Status (continued)

	Full-Time		Part-Time		Total	
	Female	Male	Female	Male	Female	Male
Cont Ed & Special Prog or No Specific	3	3	7	1	10	4
Tenured	3	3	0	0	3	3
Tenure-Track	0	0	0	0	0	0
Non Tenure-Track	0	0	7	1	7	1
Library	12	3	0	0	12	3
Tenured	6	2	0	0	6	2
Tenure-Track	6	1	0	0	6	1
Non Tenure-Track	0	0	0	0	0	0
All Faculty	261	278	111	71	372	349
Tenured	152	195	17	17	169	212
Tenure-Track	62	53	0	0	62	53
Non Tenure-Track	47	30	94	54	141	84

Includes Academic Department Heads and other Administrators with Faculty Rank but excludes Deans and above

UNI Workforce by Employment Categories 2008 - 2018

Categories	2008	2009	2010	2011	2012	2013	2014	2015	2016	2017	2018	5 Year % Change	10 Year % Change
	N	N	N	N	N	N	N	N	N	N	N		
Total Workforce*	1,890	1,883	1,842	1,894	1,801	1,819	1,861	1,835	1,816	1,820	1,811	-0.4	-4.2
Annual Percent Change	5.5	-0.4	-2.2	2.8	-4.9	1.0	2.3	-1.4	-1.0	0.2	-0.5		
Executive/Managerial	110	112	98	94	95	93	97	95	102	99	103	10.8	-6.4
Faculty-Tenure/Tenure-Track**	550	546	546	552	519	525	531	517	488	471	450	-14.3	-18.2
Faculty-Term/Renewable Term	40	40	41	63	37	36	47	51	49	54	56	55.6	40.0
Professional/Scientific	570	577	578	603	592	609	622	638	652	668	685	12.5	20.2
Secretarial/Clerical	275	272	256	264	254	249	249	230	232	228	222	-10.8	-19.3
Technical/Paraprofessional	30	27	24	22	20	20	21	16	19	18	18	-10.0	-40.0
Skilled Crafts	63	60	55	55	56	59	59	57	58	60	54	-8.5	-14.3
Service/Maintenance	252	249	244	241	228	228	235	231	216	222	223	-2.2	-11.5

Source: Office of Human Resource Services

*Excludes temporary and second appointments

**Excludes some faculty with administrative appointments

UNI Workforce Headcount and FTE by Employment Categories 2014 - 2018

	2014		2015		2016		2017		2018	
Categories	N	FTE	N	FTE	N	FTE	N	FTE	N	FTE
Total Workforce*	1,861	1,776.6	1,835	1,734.0	1,816	1,720.2	1,820	1,721.5	1,811	1,719.6
Annual Percent Change		2.1		-2.4		-0.8		0.1		-5.5
Executive/Managerial	97	95.3	95	92.1	102	101.3	99	99.0	103	102.9
Faculty - Tenure/Tenure-Track**	531	515.3	517	498.7	488	474.0	471	455.9	450	437.1
Faculty - Term/Renewable	47	46.5	51	49.5	49	48.5	54	53.5	56	56.0
Professional/Scientific	622	587.1	638	589.7	652	599.1	668	616.3	685	633.7
Secretarial/Clerical	249	235.8	230	217.9	232	220.9	228	215.1	222	211.5
Technical/Paraprofessional	21	19.8	16	15.4	19	18.4	18	17.0	18	17.2
Skilled Crafts	59	58.7	57	57.0	58	58.0	60	59.3	54	52.9
Service/Maintenance	235	218.1	231	213.7	216	200.0	222	205.4	223	208.3

Source: Office of Human Resource Services

*Excludes temporary

**Excludes some faculty with administrative appointments

UNI Workforce by Race/Ethnicity 2014 - 2018

Categories	2014		2015		2016		2017		2018	
	N	%	N	%	N	%	N	%	N	%
Total Workforce*	1,861		1,835		1,816		1,820		1,811	
Annual Percent Change		2.3		-1.4		-1.0		0.2		-0.5
American Indian/Alaskan Native	3	0.2	3	0.2	3	0.2	4	0.2	4	0.2
Asian	64	3.4	64	3.5	62	3.4	69	3.8	79	4.4
Black/African American	89	4.8	85	4.6	83	4.6	81	4.5	91	5.0
Hispanic	34	1.8	33	1.8	35	1.9	38	2.1	39	2.2
White	1,663	89.4	1,641	89.4	1,621	89.3	1,612	88.6	1,578	87.1
Native Hawaiian/Pacific Islander	1	0.1	1	0.1	1	0.1	1	0.1	1	0.1
Two or more	7	0.4	8	0.4	11	0.6	15	0.8	19	1.0
Unknown	0	0.0	0	0.0	0	0.0	0	0.0	0	0.0

Source: Office of Human Resource Services

*Excludes temporary and second appointments

UNI Workforce by Employment Categories and Race/Ethnicity Fall 2018

	American Indian/ Alaskan Native	Asian	Black/ African American	Hispanic	White	Native Hawaiian/ Pacific Islander	Two or More	Total
Total Workforce*	4	79	91	39	1,578	1	19	1,811
Executive/Managerial	1	1	7	2	91	0	1	103
Faculty - Tenure/Tenure-Track**	1	50	11	14	372	1	1	450
Faculty - Term/Renewable Term**	0	2	2	0	52	0	0	56
Professional/Scientific	1	19	42	12	596	0	15	685
Secretarial/Clerical	0	2	9	2	208	0	1	222
Technical/Paraprofessional	0	0	2	0	16	0	0	18
Skilled Crafts	0	0	0	1	53	0	0	54
Service/Maintenance	1	5	18	8	190	0	1	223

Source: Office of Human Resource Services

*Excludes temporary and second appointments

**Excludes some faculty with administrative appointments

UNI Workforce Headcount and FTE by Employment Categories and College Fall 2018

	Total University		Business		Education		Humanities, Arts & Sciences		Social & Behavioral Sciences		No Specific College	
	N	FTE	N	FTE	N	FTE	N	FTE	N	FTE	N	FTE
Total Workforce*	1,811	1,719.7	115	108.0	205	188.5	365	342.4	130	124.4	996	956.4
Executive/Managerial	103	102.9	7	7.0	11	11.0	19	18.9	10	10.0	56	56.0
Faculty - Tenure/Tenure-Track**	450	437.1	44	42.3	95	93.1	211	204.0	85	82.7	15	15.0
Faculty - Term/Renewable	56	56.0	14	14.0	16	16.0	23	23.0	3	3.0	0	0.0
Professional/Scientific	685	633.7	40	34.7	63	48.9	75	61.9	15	13.5	492	474.8
Secretarial/Clerical	222	211.5	9	9.0	19	18.5	32	30.2	17	15.3	145	138.6
Technical/Paraprofessional	18	17.2	1	1.0	0	0.0	3	2.8	0	0.0	14	13.4
Skilled Crafts	54	52.9	0	0.0	0	0.0	0	0.0	0	0.0	54	52.9
Service/Maintenance	223	208.3	0	0.0	1	1.0	2	1.7	0	0.0	220	205.7

Source: Office of Human Resource Services

*Excludes temporary

**Excludes some faculty with administrative appointments

UNI Workforce by Employment Categories, Legal Sex and College Fall 2018

Fall 2018	Total University		Business		Education		Humanities, Arts & Sciences		Social & Behavioral Sciences		No Specific College	
	F	M	F	M	F	M	F	M	F	M	F	M
Total Workforce*	1,020	791	55	60	152	53	187	178	72	58	554	442
Executive/ Managerial	51	52	5	2	8	3	8	11	5	5	25	31
Faculty - Tenure/ Tenure-Track**	206	244	8	36	62	33	85	126	40	45	11	4
Faculty - Term/ Renewable Term	36	20	7	7	10	6	16	7	3	0	0	0
Professional/ Scientific	404	281	26	14	54	9	46	29	8	7	270	222
Secretarial/ Clerical	215	7	9	0	18	1	32	0	16	1	140	5
Technical/ Paraprofessional	3	15	0	1	0	0	0	3	0	0	3	11
Skilled Crafts	3	51	0	0	0	0	0	0	0	0	3	51
Service/ Maintenance	102	121	0	0	0	1	0	2	0	0	102	118

Source: Office of Human Resource Services

*Excludes temporary and second appointments

**Excludes some faculty with administrative appointments

UNI Workforce by Employment Categories, Level and College Fall 2018

	Total University		Business		Education		Humanities, Arts & Sciences		Social & Behavioral Sciences		No Specific College	
	F-T	P-T	F-T	P-T	F-T	P-T	F-T	P-T	F-T	P-T	F-T	P-T
Total Workforce**	1,663	148	100	15	178	27	320	45	116	14	949	47
Executive/ Managerial	101	2	6	1	11	0	18	1	10	0	56	0
Faculty - Tenure/ Tenure-Track***	417	33	40	4	88	7	195	16	79	6	15	0
Faculty - Term/ Renewable Term***	56	0	14	0	16	0	23	0	3	0	0	0
Professional/ Scientific	608	77	30	10	44	19	54	21	13	2	467	25
Secretarial/ Clerical	198	24	9	0	18	1	27	5	11	6	133	12
Technical/ Paraprofessional	16	2	1	0	0	0	2	1	0	0	13	1
Skilled Crafts	51	3	0	0	0	0	0	0	0	0	51	3
Service/ Maintenance	216	7	0	0	1	0	1	1	0	0	214	6

Source: Office of Human Resource Services

**Excludes temporary and second appointments

***Excludes some faculty with administrative appointments

UNI Workforce by Employment Categories, Level and Legal Sex Fall 2018

	Total University			Female			Male		
	F-T	P-T	Phased	F-T	P-T	Phased	F-T	P-T	Phased
Total Workforce*	1,695	77	39	940	61	19	755	16	20
Executive/Managerial	102	1	0	50	1	0	52	0	0
Faculty - Tenure/Tenure Track**	423	3	24	193	2	11	230	1	13
Faculty - Term/Renewable Term**	56	0	0	36	0	0	20	0	0
Professional/Scientific	621	59	5	355	47	2	266	12	3
Secretarial/Clerical	207	10	5	201	9	5	6	1	0
Technical/Paraprofessional	17	0	1	3	0	0	14	0	1
Skilled Crafts	51	0	3	3	0	0	48	0	3
Service/Maintenance	218	4	1	99	2	1	119	2	0

Source: Office of Human Resource Services

*Excludes temporary and second appointments

**Excludes some faculty with administrative appointments

UNI Temporary Workforce Headcount and FTE by Employment Categories 2014 - 2018

Categories	2014		2015		2016		2017		2018	
	N	FTE	N	FTE	N	FTE	N	FTE	N	FTE
<i>Total Temporary Workforce*</i>	353	168.3	261	144.8	239	133.3	215	116.7	234	127.5
Executive/Managerial	1	0.5	1	0.5	1	0.5	1	0.5	0	0.0
Adjunct Faculty	212	115.1	168	99.7	172	100	172	99.9	179	106.2
Professional/Scientific	54	33.2	48	28.8	40	22.9	19	8.7	18	9.7
Merit Temporary Total (see Breakdown below)	86	19.5	44	15.8	26	9.9	23	7.6	37	11.6
<i>Merit Temporary Workforce (Breakdown)</i>	<i>86.0</i>	<i>19.5</i>	<i>44.0</i>	<i>15.8</i>	<i>26</i>	<i>9.9</i>	<i>23</i>	<i>7.6</i>	<i>37</i>	<i>11.6</i>
Secretarial/Clerical	2	0.8	16	5.4	10	4.8	4	1.7	10	4.5
Technical/Paraprofessional	0	0.0	0	0.0	1	0.8	0	0.0	0	0.0
Skilled Crafts	0	0.0	0	0.0	0	0.0	0	0.0	0	0.0
Service/Maintenance	84	18.7	28	10.4	15	4.3	19	5.9	27	7.1

Source: Office of Human Resource Services

*Excludes some faculty with administrative appointments



BUDGET & FINANCE



BUDGET & FINANCE



Statement of Revenues, Expenses and Changes In Net Position 2013 - 2018

	2013	2014	2015	2016	2017	2018
OPERATING REVENUES						
Tuition & Fees	\$90,441,952	\$89,744,628	\$89,653,189	\$91,198,392	\$94,795,754	\$97,290,076
Less Scholarship Allowance	-25,334,812	-25,424,620	-27,115,085	-27,423,143	-27,887,729	-29,328,890
Net Tuition & Fees	\$65,107,140	\$64,320,008	\$62,538,104	\$63,775,249	\$66,908,025	\$67,961,186
Federal Grants and Contracts	18,481,032	16,662,776	15,782,976	13,990,170	13,493,398	13,480,630
State and Local Grants and Contracts	2,102,578	2,053,427	2,983,411	3,648,716	2,313,573	2,395,237
Nongovernmental Grants and Contracts	3,613,871	3,320,222	3,943,663	4,046,511	4,435,154	4,781,511
Sales and Services of Educational Activities	4,937,703	6,403,218	6,168,882	5,911,251	6,611,381	5,655,563
Interest on Student Loans	245,250	226,660	210,849	213,996	211,196	144,314
Other Operating Revenue	726,808	562,860	711,025	662,461	745,911	675,173
Auxiliary Enterprises	56,344,034	57,101,721	60,468,336	61,406,866	62,830,797	60,558,630
Total Operating Revenues	\$151,558,416	\$150,650,892	\$152,807,246	\$153,655,220	\$157,549,435	\$155,652,244
OPERATING EXPENSES						
Instruction	\$82,764,796	\$86,505,596	\$86,536,932	\$84,062,858	\$84,157,892	\$80,901,677
Research	3,138,471	2,982,535	3,175,745	2,956,675	2,807,731	2,454,788
Public Service	24,325,404	25,052,740	21,315,032	20,960,763	21,158,018	20,535,785
Academic Support	21,731,295	22,489,903	22,866,432	22,514,076	24,453,665	24,957,576
Student Services	9,005,372	9,636,281	10,430,540	10,034,876	11,500,806	10,106,466
Institutional Support	26,441,182	26,066,570	27,210,997	29,196,905	27,154,337	24,849,345
Operation and Maintenance of Plant	21,423,526	21,166,860	22,201,764	20,132,206	21,447,650	23,527,282
Scholarships and Fellowships	4,983,383	3,381,347	6,202,848	5,863,221	5,860,458	6,143,564
Depreciation	16,095,251	18,040,748	18,095,313	18,121,445	18,534,457	19,112,827
Other Operating Expenses	281,264	193,945	150,187	245,451	185,557	263,616
Auxiliary Enterprises	50,975,515	50,774,324	51,743,111	51,264,280	53,724,329	55,824,400
Total Operating Expenses	\$261,165,459	\$266,290,849	\$269,928,901	\$265,352,756	\$270,984,900	\$268,677,326
Operating (Loss)	(109,607,043)	(115,639,957)	(117,121,655)	(111,697,536)	(113,435,465)	(113,025,082)

Continued on next page

Statement of Revenues, Expenses and Changes In Net Position 2013 - 2018 (continued)

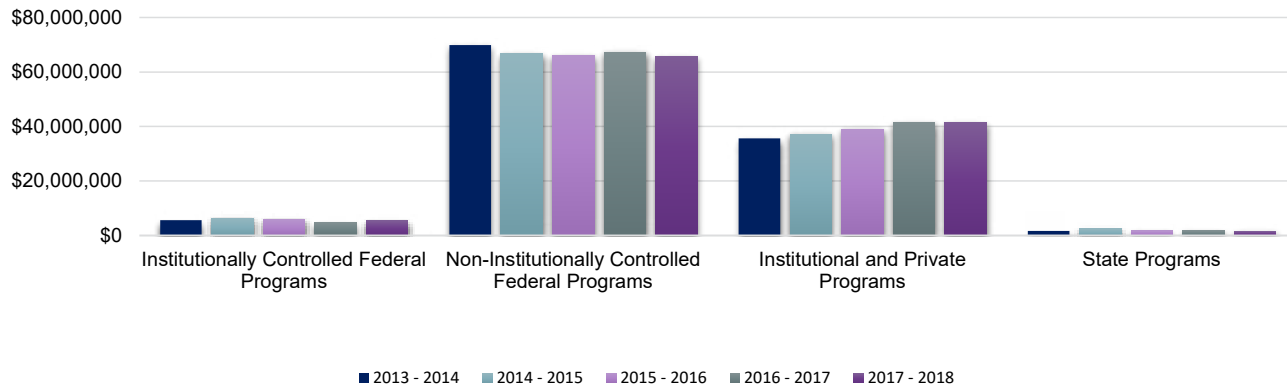
	2013	2014	2015	2016	2017	2018
NON-OPERATING REVENUES (EXPENSES)						
State Appropriations	\$ 87,662,815	\$ 96,910,269	\$ 100,659,338	\$ 101,757,980	\$ 101,899,530	\$ 101,377,509
Federal Grants and Contracts	10,860,223	10,270,339	10,714,971	10,670,342	10,790,666	11,657,278
Nonfederal Gifts, Grants and Contracts	3,101,932	3,827,149	2,010,489	2,536,628	3,269,948	3,956,027
Investment Income	1,464,982	3,644,079	1,658,231	1,333,323	3,089,487	2,619,365
Interest on Indebtedness	(5,529,028)	(5,463,353)	(5,890,651)	(4,392,263)	(5,227,863)	(5,290,179)
Miscellaneous Revenue/(Expense)	(2,381,912)	(2,428,923)	(368,366)	3,487,927	(310,215)	332,620
Net Non-Operating Revenue	<u>\$95,179,012</u>	<u>\$106,759,560</u>	<u>\$108,784,012</u>	<u>\$115,393,937</u>	<u>\$113,511,553</u>	<u>\$114,652,620</u>
Gain/(Loss) Before Other Revenues	<u>\$ (14,428,031)</u>	<u>\$ (8,880,397)</u>	<u>\$ (8,337,643)</u>	<u>\$ 3,696,401</u>	<u>\$ 76,088</u>	<u>\$ 1,627,538</u>
Capital Appropriations	\$14,082,733	\$14,177,141	\$8,121,169	\$19,118,946	\$19,220,339	\$3,660,840
Capital Gifts, Grants and Contracts	1,193,696	3,232,154	1,832,059	1,278,214	6,285,081	2,570,423
Total Other Revenues	<u>\$15,276,429</u>	<u>\$17,409,295</u>	<u>\$9,953,228</u>	<u>\$20,397,160</u>	<u>\$25,505,420</u>	<u>\$6,231,263</u>
Change in Net Position	<u>\$ 848,398</u>	<u>\$ 8,528,898</u>	<u>\$ 1,615,585</u>	<u>\$ 24,093,561</u>	<u>\$25,581,508</u>	<u>\$7,858,801</u>
NET POSITION						
Total Net Position – July 1 Restated	<u>\$326,073,174</u>	<u>\$326,921,572</u>	<u>\$325,165,074</u>	<u>\$326,780,659</u>	<u>\$350,874,220</u>	<u>\$371,246,326</u>
Total Net Position – June 30	<u><u>\$326,921,572</u></u>	<u><u>\$335,450,470</u></u>	<u><u>\$326,780,659</u></u>	<u><u>\$350,874,220</u></u>	<u><u>\$376,455,728</u></u>	<u><u>\$379,105,127</u></u>

Source: Office of Business Operations
Fiscal year runs July 1 through June 30

Financial Aid Programs by Source of Aid 2013 - 2014 to 2017 - 2018

	2013 - 2014	2014 - 2015	2015 - 2016	2016 - 2017	2017 - 2018	5 Year % Change
TOTAL	\$112,826,725	\$112,525,868	\$112,531,516	\$115,410,950	\$114,140,034	1.2%
Institutionally Controlled Federal Programs	\$5,596,097	\$6,233,939	\$5,754,578	\$4,767,860	\$5,483,927	-2.0%
Non-Institutionally Controlled Federal Programs	\$69,903,959	\$66,618,122	\$66,080,537	\$67,325,519	\$65,656,073	-6.1%
Institutional and Private Programs	\$35,632,554	\$37,246,405	\$38,984,604	\$41,444,005	\$41,392,880	16.2%
State Programs	\$1,694,115	\$2,427,402	\$1,711,797	\$1,873,566	\$1,607,154	-5.1%

Source of Financial Aid
2014 through 2018



Source: Financial Aid Office

Student Financial Aid Programs 2015 - 2016 to 2017 - 2018

	2015 - 2016			2016 - 2017			2017 - 2018		
	Number of Awards	Value of Awards	Mean Award	Number of Awards	Value of Awards	Mean Award	Number of Awards	Value of Awards	Mean Award
TOTAL	35,278	\$112,528,516	\$3,190	38,027	\$115,410,950	\$3,035	38,950	\$114,140,034	\$2,930
Institutional & Private Gift Aid	11,857	\$24,230,287	\$2,044	14,941	\$25,653,887	\$1,717	15,318	\$26,140,068	\$1,706
Institutional Scholarships/Grants	7,898	13,550,746	\$1,716	9,052	13,933,491	\$1,539	9,592	14,424,147	\$1,504
Corporate/Private Scholarships	3,642	7,158,119	\$1,965	5,575	8,034,970	\$1,441	5,402	7,872,669	\$1,457
Athletic Scholarships	317	3,521,422	\$11,109	314	3,685,426	\$11,737	324	3,843,252	\$11,862
Federal & State Grants	5,068	\$15,561,594	\$3,071	5,134	\$15,786,582	\$3,075	5,577	\$16,366,544	\$2,935
Federal Pell Grant	2,811	10,664,883	\$3,794	2,882	10,767,268	\$3,736	3,136	11,638,627	\$3,711
Supplemental Education Opportunity Grant	478	424,452	\$888	478	433,756	\$907	484	419,687	\$867
TEACH Grant	403	1,279,822	\$3,176	438	1,357,829	\$3,100	486	1,540,949	\$3,171
Other Federal Grant/Scholarship Programs	768	1,509,176	\$1,965	662	1,359,207	\$2,053	640	1,167,807	\$1,825
All Iowa Opportunity Scholarship	47	259,863	\$5,529	69	367,673	\$5,329	44	179,306	\$4,075
Iowa Foster Child Grant	10	32,142	\$3,214	6	20,592	\$3,432	0	0	\$0
Iowa Grant	0	0	\$0	0	0	\$0	0	0	\$0
National Guard	93	461,070	\$4,958	88	504,077	\$5,728	80	464,447	\$5,806
Vocational Rehabilitation	144	421,669	\$2,928	131	403,063	\$3,077	120	342,649	\$2,855
Commission for the Blind	3	22,541	\$7,514	3	26,903	\$8,968	3	21,910	\$7,303
Gear Up	124	263,644	\$2,126	150	311,002	\$2,073	125	240,050	\$1,920
Other State Grants	187	222,332	\$1,189	227	235,212	\$1,036	459	351,112	\$765
Loans	13,995	\$61,287,019	\$4,379	13,815	\$62,069,135	\$4,493	13,979	\$60,407,892	\$4,321
Federal Perkins	1,051	1,997,332	\$1,900	631	1,212,089	\$1,921	923	1,807,863	\$1,959
Direct Loans	12,306	55,183,498	\$4,484	12,507	56,246,592	\$4,497	12,335	53,807,289	\$4,362
Alternative Loans	638	4,106,189	\$6,436	677	4,610,454	\$6,810	721	4,792,740	\$6,647
Employment	4,358	\$11,449,616	\$2,627	4,137	\$11,901,346	\$2,877	4,076	\$11,225,530	\$2,754
Federal Work Study	452	680,989	\$1,507	443	678,924	\$1,533	451	701,991	\$1,557
Graduate Teaching, Research Assistantships	311	2,303,877	\$7,408	305	2,293,548	\$7,520	299	2,247,999	\$7,518
UNI Employment	3,595	8,464,750	\$2,355	3,389	8,928,874	\$2,635	3,326	8,275,540	\$2,488

Source: Financial Aid Office

Full-Time Undergraduate Student Tuition and Fees 1999 - 2000 to 2018 - 2019

Academic Year	Academic Services	Activity	Athletics	Computing/Technology	Facilities	General Student Services	Health Services	Health Facility	Surcharge	Total Mandatory Fees	UG Tuition	Total Tuition & Mandatory Fees
1999-00				\$104			\$98			\$202	\$2,786	\$2,988
2000-01				\$122			\$102			\$224	\$2,906	\$3,130
2001-02		\$92		\$126			\$106			\$324	\$3,116	\$3,440
2002-03		\$174		\$140			\$112			\$426	\$3,692	\$4,118
2003-04				\$150	\$180	\$102	\$116	\$26		\$574	\$4,342	\$4,916
2004-05				\$165	\$180	\$190	\$124	\$26		\$685	\$4,702	\$5,387
2005-06				\$116	\$198	\$222	\$144	\$32		\$712	\$4,890	\$5,602
2006-07				\$178	\$232	\$231	\$152	\$33	\$200	\$1,026	\$5,086	\$6,112
2007-08				\$187	\$237	\$223	\$158	\$33		\$838	\$5,352	\$6,190
2008-09				\$193	\$237	\$227	\$162	\$33		\$852	\$5,524	\$6,376
2009-10		\$35		\$200	\$235	\$215	\$166	\$29	\$100	\$980	\$5,756	\$6,736
2010-11		\$45		\$212	\$235	\$213	\$172	\$29		\$906	\$6,102	\$7,008
2011-12		\$60		\$229	\$235	\$213	\$176	\$29		\$942	\$6,408	\$7,350
2012-13		\$65		\$252	\$235	\$217	\$189	\$29		\$987	\$6,648	\$7,635
2013-14		\$67		\$258	\$220	\$258	\$203	\$31		\$1,037	\$6,648	\$7,685
2014-15		\$68		\$270	\$224	\$295	\$213	\$31		\$1,101	\$6,648	\$7,749
2015-16		\$71		\$290	\$229	\$320	\$228	\$31		\$1,169	\$6,648	\$7,817
2016-17		\$114		\$300	\$261	\$225	\$236	\$31		\$1,211	\$7,098	\$8,309
2017-18		\$120		\$304	\$232	\$230	\$250	\$30		\$1,243	\$7,456	\$8,699
2018-19		\$122		\$300	\$242	\$230	\$258	\$31		\$1,273	\$7,666	\$8,939

Source: <https://www.uni.edu/tuition/2018-2019-undergraduate-tuition-fees>

All Non-College of Business Administration Resident students

Full-Time Graduate Student Tuition and Fees 1999 - 2000 to 2018 - 2019

Academic Year	Academic Services	Activity	Athletics	Computing/Technology	Facilities	General Student Services	Health Services	Health Facility	Surcharge	Total Mandatory Fees	Grad Tuition	Total Tuition & Mandatory Fees
1999-00				\$104			\$98			\$202	\$3,308	\$3,510
2000-01				\$122			\$102			\$224	\$3,452	\$3,676
2001-02		\$92		\$126			\$106			\$324	\$3,702	\$4,026
2002-03		\$174		\$140			\$112			\$426	\$4,388	\$4,814
2003-04				\$150	\$180	\$102	\$116	\$26		\$574	\$5,038	\$5,612
2004-05				\$165	\$180	\$190	\$124	\$26		\$685	\$5,488	\$6,173
2005-06				\$116	\$198	\$222	\$144	\$32		\$712	\$5,708	\$6,420
2006-07				\$178	\$232	\$231	\$152	\$33	\$200	\$1,026	\$5,936	\$6,962
2007-08				\$187	\$237	\$223	\$158	\$33		\$838	\$6,246	\$7,084
2008-09				\$193	\$237	\$227	\$162	\$33		\$852	\$6,446	\$7,298
2009-10		\$35		\$200	\$235	\$215	\$166	\$29	\$100	\$980	\$6,716	\$7,696
2010-11		\$45		\$212	\$235	\$213	\$172	\$29		\$906	\$7,120	\$8,026
2011-12		\$60		\$229	\$235	\$213	\$176	\$29		\$942	\$7,476	\$8,418
2012-13		\$65		\$252	\$235	\$217	\$189	\$29		\$987	\$7,756	\$8,743
2013-14		\$67		\$258	\$220	\$258	\$203	\$31		\$1,037	\$7,756	\$8,793
2014-15		\$68		\$270	\$224	\$295	\$213	\$31		\$1,101	\$7,912	\$9,013
2015-16		\$71		\$290	\$229	\$320	\$228	\$31		\$1,169	\$8,050	\$9,219
2016-17		\$114		\$300	\$230	\$225	\$236	\$31		\$1,211	\$8,592	\$9,803
2017-18		\$120		\$304	\$232	\$230	\$250	\$30		\$1,243	\$8,950	\$10,193
2018-19		\$122		\$300	\$242	\$230	\$258	\$31		\$1,273	\$9,159	\$10,432

Source: <https://tuition.uni.edu/2018-2019-graduate-tuition-fees>

Resident students

Sponsored Project Proposals and Awards 2007 - 2008 to 2017 - 2018

Fiscal Year	Proposals (P)		Awards (A)	
	N	Amount (\$)	N	Amount (\$)
2007 - 2008	352	42,777,178	273	37,101,834
2008 - 2009	273	56,854,498	227	45,767,242
2009 - 2010	365	53,717,963	254	39,754,021
2010 - 2011	353	56,922,612	250	42,018,391
2011 - 2012	227	42,435,603	185	38,326,824
2012 - 2013*	220	46,942,575	156	41,181,950
2013 - 2014	192	40,216,946	145	40,830,739
2014 - 2015	190	39,917,144	143	38,862,509
2015 - 2016	209	41,799,143	97	39,067,751
2016 - 2017	236	40,997,126	203	37,767,444
2017 - 2018	236	45,623,285	186	39,476,790

Highlights from the 2018 fiscal year:

100 new project applications in FY18.

\$9.6 million in sponsored funding was directed at outreach projects that impacted people, communities and environments throughout Iowa.

\$13.2 million in sponsored funding supported student services and strengthening academic support programming at UNI.

\$4.4 million in foundation supported research.

\$2.6 million in funding for research.

Source: Office of Research and Sponsored Programs and UNI Foundation

*Starting 2012-2013, amount includes UNI Foundation awards.

Intentionally blank



GENERAL INFORMATION



GENERAL INFORMATION



Library Statistics 2013 - 2018

	2013	2014	2015	2016	2017	2018
PERSONNEL – FTE						
Library Faculty	18	20	17	15	16	16
Library Associates	11	10	12	11	12	11
Library Staff	20	21	19	17	20	20
Student Assistants (FTE)	16	16	17	16	16	16
HOLDINGS/ACCESS						
Books	784,462	776,179	780,940	783,450	786,247	759,520
Periodicals	176,236	170,491	166,675	165,643	163,953	97,435
Electronic Books	205,638	262,564	211,207	372,113	463,214	386,190
Electronic Journals	59,434	65,717	63,618	77,173	94,074	93,453
Maps (sheets and folded)	40,949	40,957	40,966	40,971	41,015	39,350
Maps (electronic)		2,799	2,840	2,895	2,904	3,256
Government Documents (all)						
Paper	202,254	189,467	172,467	157,311	155,325	74,943
Microform	301,405	300,610	300,719	300,635	300,632	59,139
CD/DVD/Floppy	2,416	544	500	481	481	387
Subscriptions						
Periodicals (paper - with newspapers)	1,188	1,188	813	484	693	532
Periodicals (electronic - with newspapers)	1,114	1,114	1,285	981	630	786
Databases	151	184	185	189	212	216
Audiovisuals						
Sound Recordings	18,516	19,289	19,998	20,120	20,289	15,235
Films and Videotapes	9,116	8,217	8,593	8,767	8,739	9,406
Other Nonprint Materials	2,946	2,853	3,267	3,283	3,201	5,058

Continued on next page

Library Statistics 2013 - 2018 (continued)

	2013	2014	2015	2016	2017	2018
HOLDINGS/ACCESS (continued)						
Microform Units (not government documents)						
Microfilm	30,133	30,007	30,141	30,293	30,316	28,661
Microfiche	775,198	774,908	774,907	774,906	774,663	59,656
Microcards	17,076	17,076	17,076	17,076	17,076	4,598
Archives & Manuscripts (linear feet)	5,616	5,616	5,994	6,397	4,964	5,485
SERVICES						
Building Entrance Count	446,840	408,445	490,323	542,616	546,002	501,762
Circulation (first time loans)	104,980	85,307	85,421	67,381	55,091	73,802
Reference Transactions (all)	10,916	9,455	6,677	10,718	11,110	6,387
Interlibrary Loan						
Borrowed	3,691	3,555	4,352	4,042	3,020	3,212
Loaned	4,806	4,994	5,111	4,103	4,377	4,210
Library Instruction						
Classes	316	390	458	660	686	612
Persons Served	5,725	7,098	7,851	10,739	12,305	11,819
Document Delivery						
On Campus	*	13	3	3	68	**
Off Campus	498	236	307	2,461	1,069	1,024**

Source: *The Rod Library*

*Statistic not captured

** Statistics captured with no distinction between on campus and off campus

International Students by Country Fall 2018

Country	N	Country	N	Country	N
Algeria	1	Finland	1	Netherlands	1
Armenia	1	France	3	Nigeria	8
Austria	2	Germany	1	Oman	15
Azerbaijan	1	Ghana	1	Pakistan	19
Bahamas	1	Honduras	2	Palestinian Territory, Occupied	1
Bangladesh	4	Hong Kong	7	Peru	1
Belgium	2	India	28	Philippines	1
Brazil	2	Indonesia	2	Qatar	2
Burkina Faso	1	Iran	1	Republic of South Sudan	1
Cameroon	1	Italy	2	Russia	8
Canada	10	Jamaica	1	Saudi Arabia	95
Chile	3	Japan	16	Serbia	1
China	176	Kazakhstan	1	Sierra Leone	1
Colombia	3	Kenya	2	South Korea	4
Congo	1	Kuwait	1	Sri Lanka	2
Congo, The Democratic Republic	3	Malaysia	7	Taiwan	2
Costa Rica	1	Mali	1	Thailand	3
Denmark	1	Mexico	4	United Kingdom	4
Egypt	1	Myanmar	2	Uzbekistan	1
Ethiopia	2	Nepal	6	Viet Nam	4
				Total	480
				Number of Countries	60

Includes undergraduates and graduates

International Students by College 2013 - 2018

College	2013	2014	2015	2016	2017	2018	1 Yr % Change	5 Yr % Change
TOTAL	520	626	616	548	547	480		
Annual Percent Change	14.5	20.4	-1.6	-11.0	-0.2	-12.2	-12.2	-7.7
Business Administration	192	215	223	212	241	240	-0.4	25.0
Education	58	63	62	67	61	54	-11.5	-6.9
Humanities, Arts and Sciences	152	172	184	177	152	107	-29.6	-29.6
Social and Behavioral Sciences	32	37	43	48	43	43	0.0	34.4
No Specific College	86	139	104	44	50	36	-28.0	-58.1

Includes undergraduates and graduates

Top 5 Countries of Origin for International Students 2008 - 2018

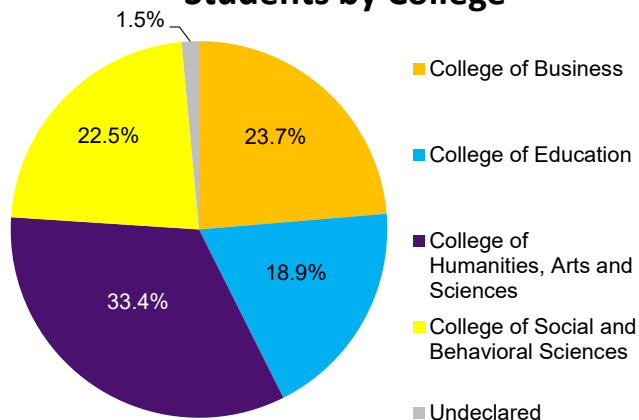
Fall	Country	N	Country	N	Country	N	Country	N	Country	N	Total International Students
2008	China	82	Saudi Arabia	71	Hong Kong	45	India	37	Russia	34	464
2009	Saudi Arabia	106	China	85	India	35	Russia	26	Hong Kong	17	453
2010	Saudi Arabia	146	China	100	India	27	Russia	23	South Korea	16	480
2011	Saudi Arabia	180	China	89	Russia	24	India	21	Hong Kong	18	488
2012	Saudi Arabia	163	China	88	India	21	Russia	16	Hong Kong	15	454
2013	Saudi Arabia	183	China	127	Hong Kong	19	India	19	Japan	14	520
2014	Saudi Arabia	197	China	138	Brazil	63	India	22	Hong Kong Japan	16 16	626
2015	Saudi Arabia	211	China	144	Brazil	38	India	25	Malaysia	15	616
2016	Saudi Arabia	163	China	116	India	30	Hong Kong	21	Canada	18	548
2017	Saudi Arabia	135	China	135	India	30	Hong Kong	26	Pakistan	23	547
2018	China	176	Saudi Arabia	95	India	28	Pakistan	19	Japan	16	480

Study Abroad Students by College & Classification Fall 2017/Spring 2018/Summer 2018

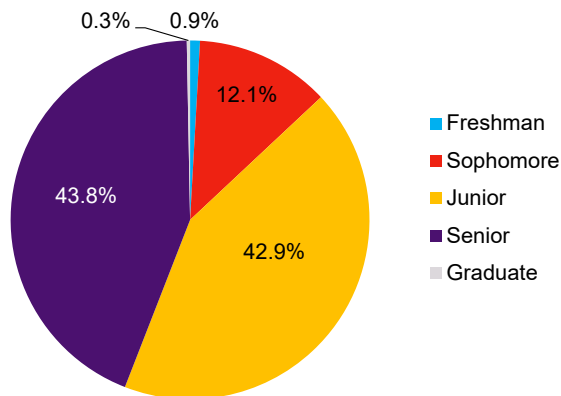
College	N
College of Business	80
College of Education	64
College of Humanities, Arts and Sciences	113
College of Social and Behavioral Sciences	76
Undeclared	5
Total	338

Classification	N
Freshman	3
Sophomore	41
Junior	145
Senior	148
Graduate	1
Unclassified	0
Total	338

Students by College



Students by Classification



Source: Study Abroad Center

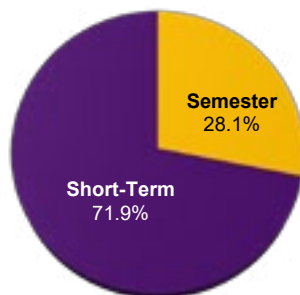
Includes undergraduates and graduates

Does not consider Camp Adventure, International Student Teaching, Athletics, nor School of Music

Study Abroad Students by Term Fall 2017/Spring 2018/Summer 2018

Type of Program	Academic Year	Fall 2017	Spring 2018	Summer 2018	Total
Semester	5	22	68	--	95
Short-Term	--	--	--	243	243
Total					338

Students by Type of Program



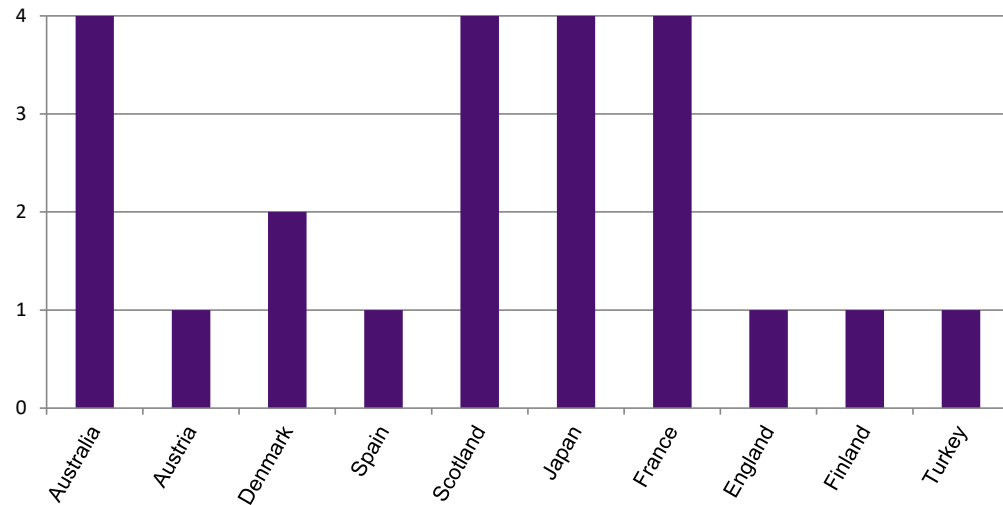
Source: *Study Abroad Center*

Includes undergraduates and graduates

Does not consider Camp Adventure, International Student Teaching, Athletics, nor School of Music

Incoming International Exchange Students by Country Fall 2017/Spring 2018

Country	N
Australia	4
Austria	1
Denmark	2
Spain	1
Scotland	4
Japan	4
France	4
England	1
Finland	1
Turkey	1



Total 23

Number of Countries 10

Source: Study Abroad Center

Includes undergraduates and graduates

Does not consider Camp Adventure, International Student Teaching, Athletics, nor School of Music

Top 5 Countries for UNI Study Abroad Students AY 2008 - 2018

AY	Country	Top 1	Country	Top 2	Country	Top 3	Country	Top 4	Country	Top 5
2007-2008	Nicaragua	52	Spain	46	England	43	France	32	Mexico	32
2008-2009	England	61	Greece	54	Nicaragua	52	Spain	52	Ireland	31
2009-2010	England	98	Italy	92	Spain	67	Ireland	62	France	54
2010-2011	Germany	302	Japan	145	Italy	119	England	112	Ireland	72
2011-2012	Germany	255	Japan	147	England	106	Italy	98	Ireland	63
2012-2013	Germany	235	Japan	140	England	131	Italy	98	France	75
2013-2014	England	155	Ireland	109	Italy	69	France	67	Greece	50
2014-2015	England	104	Ireland	77	Italy	58	Greece	40	France	32
2015-2016	Italy	71	Ireland	41	Spain	31	Greece	28	New Zealand	23
2016-2017	Italy	64	Ireland	44	Spain	39	Brazil	38	Greece	28
2017-2018	Italy	68	England	60	Spain	46	Greece	35	Ireland	26

Source: *Study Abroad Center*

Includes undergraduates and graduates

Does not consider Camp Adventure, International Student Teaching, Athletics, nor School of Music

For multiple destinations in one program, total count was included for all countries

UNI Services to Businesses, Communities and Local Government

Divisions	Location	Telephone	Website
Advance Iowa	Cedar Falls, IA	319-273-4322	https://advanceiowa.com
Business & Community Services	Cedar Falls, IA	319-273-6069	https://bcs.uni.edu
Center for Business Growth and Innovation	Cedar Falls, IA	319-273-4344	https://cbgi.uni.edu
Center for Energy and Environmental Education	Cedar Falls, IA	319-273-2573	https://ceee.uni.edu
Geoinformatics Training, Research, Education and Extension	Cedar Falls, IA	319-273-3877	https://www.geotree.uni.edu/en/
Heartland Economic Development Course	Cedar Falls, IA	319-273-6944	https://bcs.uni.edu/heartland
Institute for Decision Making	Cedar Falls, IA	319-273-6941	https://idm.uni.edu
Iowa Waste Reduction Center	Cedar Falls, IA	319-273-8905	https://iwrcc.uni.edu
John Pappajohn Entrepreneurial Center	Cedar Falls, IA	319-273-5732	https://jpec.uni.edu
Materials Innovation Service	Cedar Falls, IA	319-273-3689	https://rrttc.com/materials-innovation-service
Recycling and Reuse Technology Transfer	Cedar Falls, IA	319-273-3689	https://rrttc.com
Regional Entrepreneurship Project	Cedar Falls, IA	319-273-6944	https://bcs.uni.edu/eda
Small Business Development Center	Cedar Falls, IA	319-273-4328	https://cbgi.uni.edu/sbdc
Strategic Marketing Services	Cedar Falls, IA	319-273-2886	https://sms.uni.edu
Tallgrass Prairie Center	Cedar Falls, IA	319-273-3836	https://tallgrassprairiecenter.org
UNI Metal Casting Center	Cedar Falls, IA	319-273-6894	https://mcc.uni.edu

Source: *UNI Business and Community Services*

UNI Carnegie Classification

Classification:

Basic

Size and Setting

Enrollment Profile

Undergraduate Profile

Undergraduate Instructional Program

Graduate Instructional Program

Category:

M1: Master's Colleges & Universities: Larger Programs

Four-year, large, highly residential

Very high undergraduate

Four-year, full-time, selective, higher transfer-in

Professions plus arts & sciences, some graduate coexistence

Postbaccalaureate: Comprehensive programs

This institution participated in the following elective classification:

Community Engagement

Level

Control

Enrollment (Fall 2018)

Curricular Engagement and Outreach and Partnerships

4-year or above

Public

11,212

Source: *The Carnegie Classification of Institutions of Higher Education - classification based on data from 2016 - 2017*

Notes:

Graduate program classification: based on fewer than 50 degrees.

Undergraduate program classification: percentage is within 5 points of a category border (arts & sciences direction).

Apparent inconsistencies between basic and instructional program classifications are due to degree thresholds used in the basic classification.

Iowa Economic Impact Profile

Item	Details
Discretionary Spending and Tourism	11,212 current students
Provide Higher Ed	<p>Approximately 89% of students are from Iowa</p> <p>Credit courses were offered in 99 counties and 572 cities and towns</p> <p>40 off-campus degree and certification programs were offered</p> <p>15,987 enrollment in Continuing and Distance Education Credit courses</p> <p>11,723 non-credit educational activities</p>
Business Services and Community Impact	<p>Total number community service hours engaged in by UNI students is 1,050,100 (2017-2018)</p> <p>UNI provided service in all 99 counties to nearly 3,370 unique business, community and local government clients; another 49,000 individuals were engaged in the MyEntre.Net/ IA SourceLink entrepreneurial support system. BCS has reached more than 406,000 Iowans through BCS programs and projects.</p>

Source: Business & Community Services, Community Engagement, Continuing Education, and Office of the President



PEER INSTITUTIONS



PEER INSTITUTIONS

Undergraduate Enrollment and Costs 2016 - 2017

Institution	Location	UG	Student to Faculty Ratio	In State	Out of State
				Tuition & Fees	Tuition & Fees
College of Charleston	Charleston, SC	10,375	15/1	\$23,853	\$42,011
Eastern Illinois University	Charleston, IL	5,957	14/1	\$21,126	\$23,286
Ferris State University	Big Rapids, MI	12,866	16/1	\$20,942	\$27,700
James Madison University	Harrisburg, VA	19,548	16/1	\$19,724	\$35,498
Marshall University	Huntington, WV	9,615	19/1	\$17,280	\$26,508
Southern Illinois University - Edwardsville	Edwardsville, IL	11,720	19/1	\$20,219	\$32,747
Truman State University	Kirksville, MO	6,039	17/1	\$16,014	\$22,498
University of Massachusetts - Dartmouth	North Dartmouth, MA	6,999	16/1	\$25,658	\$39,943
University of Minnesota - Duluth	Duluth, MN	9,967	17/1	\$20,599	\$24,945
University of Northern Iowa	Cedar Falls, IA	10,104	17/1	\$16,938	\$27,480
Western Washington University	Bellingham, WA	14,592	19/1	\$18,253	\$32,197

Source: *Integrated Postsecondary Education Data System (IPEDS)*

UG - Fall 2016 undergraduate enrollment

The cost refers to the total dollar amount of living on campus thus including room and board.

Faculty by Rank 2016 - 2017

Institution	Location	Professor	Associate Professor	Assistant Professor
College of Charleston	Charleston, SC	154	178	145
Eastern Illinois University	Charleston, IL	149	113	66
Ferris State University	Big Rapids, MI	198	130	164
James Madison University	Harrisburg, VA	340	285	258
Marshall University	Huntington, WV	242	209	269
Southern Illinois University - Edwardsville	Edwardsville, IL	138	203	130
Truman State University	Kirksville, MO	155	39	104
University of Massachusetts - Dartmouth	North Dartmouth, MA	115	110	81
University of Minnesota - Duluth	Duluth, MN	86	158	171
University of Northern Iowa	Cedar Falls, IA	146	174	118
Western Washington University	Bellingham, WA	196	164	137

Source: *Integrated Postsecondary Education Data System (IPEDS)*

2016 - 2017 Academic year full-time faculty on both 9/10 month and 11/12 month contract lengths

Faculty Average Salaries by Rank 2016 - 2017

Institution	Location	Professor	Associate Professor	Assistant Professor	Instructor	All Ranks
College of Charleston	Charleston, SC	\$94,167	\$75,204	\$68,742	\$57,582	\$77,148
Eastern Illinois University	Charleston, IL	\$91,359	\$73,863	\$71,685	\$50,976	\$74,817
Ferris State University	Big Rapids, MI	\$90,171	\$78,012	\$67,428	\$63,603	\$74,223
James Madison University	Harrisburg, VA	\$90,288	\$74,313	\$68,364	\$56,664	\$75,789
Marshall University	Huntington, WV	\$78,759	\$67,185	\$60,921	\$38,394	\$64,548
Southern Illinois University - Edwardsville	Edwardsville, IL	\$89,793	\$75,447	\$63,567	\$43,083	\$69,966
Truman State University	Kirksville, MO	\$75,771	\$62,334	\$54,747	\$42,750	\$64,098
University of Massachusetts - Dartmouth	North Dartmouth, MA	\$126,666	\$99,252	\$83,448	-	\$96,912
University of Minnesota - Duluth	Duluth, MN	\$101,052	\$79,776	\$64,080	\$53,559	\$73,449
University of Northern Iowa	Cedar Falls, IA	\$93,330	\$73,584	\$64,818	\$41,157	\$69,561
Western Washington University	Bellingham, WA	\$100,845	\$82,296	\$72,135	\$54,342	\$82,368

Source: *Integrated Postsecondary Education Data System (IPEDS)*
2016 - 2017 Academic year full-time faculty

Undergraduates Receiving Student Financial Aid 2016 - 2017

Institution	Location	Federal Grants*		State/Local Grants		Institutional Grants		Loans		Receiving any Financial Aid %
		N	\$	N	\$	N	\$	N	\$	
College of Charleston	Charleston, SC	440	\$4,563	1184	\$5,097	741	\$6,278	928	\$6,707	76%
Eastern Illinois University	Charleston, IL	523	\$4,583	479	\$3,848	785	\$4,693	823	\$7,005	94%
Ferris State University	Big Rapids, MI	879	\$4,865	599	\$6,555	1261	\$5,045	1383	\$8,007	96%
James Madison University	Harrisburg, VA	654	\$4,280	468	\$5,124	780	\$5,637	1945	\$7,103	63%
Marshall University	Huntington, WV	975	\$4,809	1095	\$4,605	1139	\$3,866	1126	\$6,023	96%
Southern Illinois University - Edwardsville	Edwardsville, IL	787	\$4,948	589	\$3,449	1171	\$3,780	1308	\$6,279	93%
Truman State University	Kirksville, MO	323	\$4,207	799	\$2,792	1284	\$5,999	640	\$5,975	99%
University of Massachusetts - Dartmouth	North Dartmouth, MA	670	\$4,732	988	\$2,120	1036	\$5,123	1211	\$6,902	92%
University of Minnesota - Duluth	Duluth, MN	538	\$4,511	756	\$4,605	1373	\$3,466	1390	\$7,255	86%
University of Northern Iowa	Cedar Falls, IA	505	\$4,392	196	\$3,714	1078	\$2,550	1034	\$5,696	82%
Western Washington University	Bellingham, WA	724	\$4,601	482	\$7,555	1638	\$3,852	1422	\$5,840	83%

Source: Integrated Postsecondary Education Data System (IPEDS)

Full-time, first-time, degree/certificate-seeking undergraduate students receiving financial aid

\$ = Average amount of aid received

Retention and Graduation Rates Fall 2016 and 2017

Institution	Location	Retention*	Graduation Rates**
		%	%
College of Charleston	Charleston, SC	79	67
Eastern Illinois University	Charleston, IL	71	59
Ferris State University	Big Rapids, MI	75	48
James Madison University	Harrisburg, VA	91	82
Marshall University	Huntington, WV	75	45
Southern Illinois University - Edwardsville	Edwardsville, IL	72	50
Truman State University	Kirksville, MO	87	71
University of Massachusetts - Dartmouth	North Dartmouth, MA	73	47
University of Minnesota - Duluth	Duluth, MN	78	59
University of Northern Iowa	Cedar Falls, IA	86	64
Western Washington University	Bellingham, WA	82	72

Source: *Integrated Postsecondary Education Data System (IPEDS)*

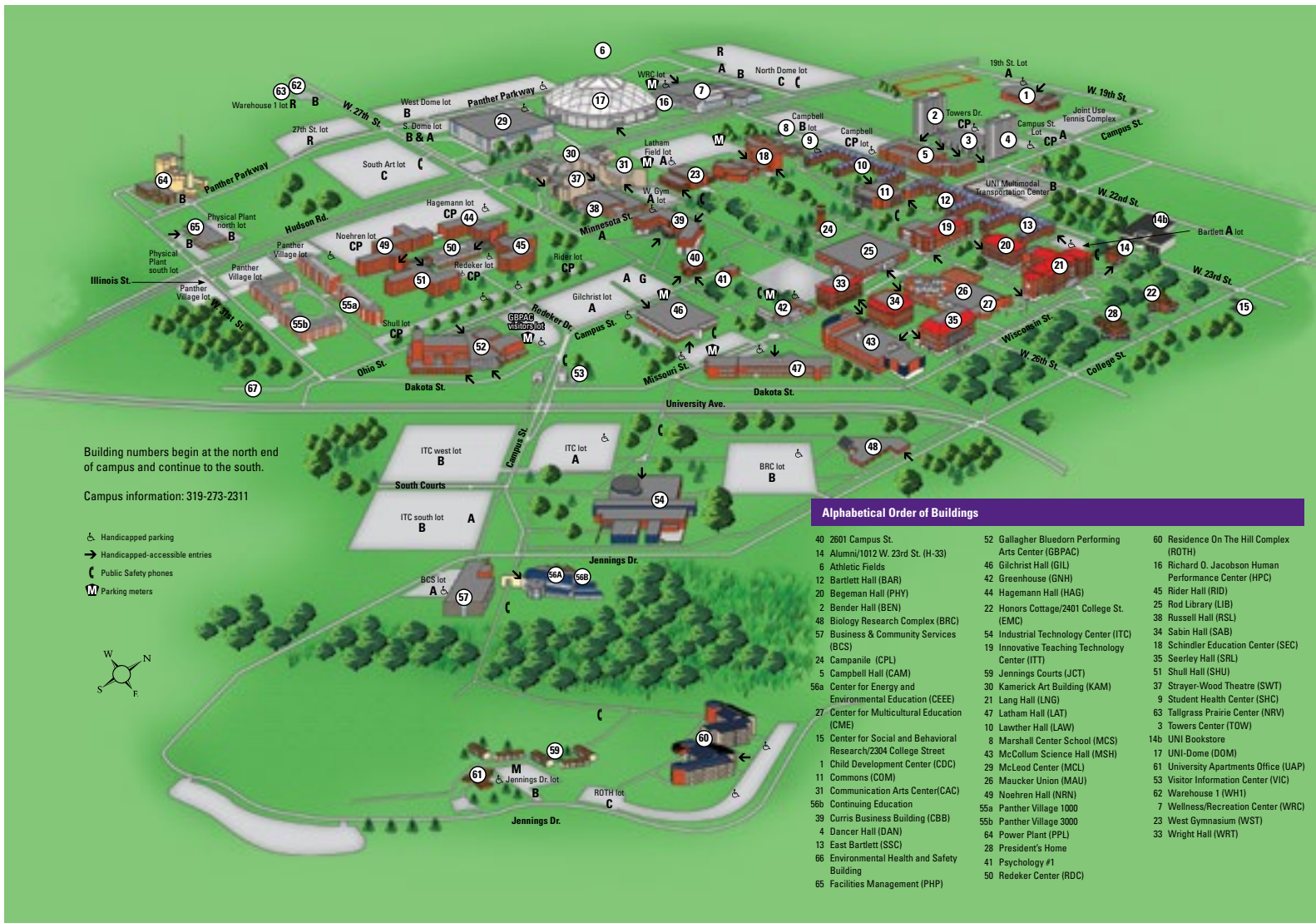
*Full-time retention rate 2016-17 academic year

** Graduation rates within 150% of normal time Fall 2016

Degrees Granted in Academic Year 2016 - 2017

Institution	Location	Baccalaureate			Total
		(Bachelor's)	Master's	Doctorates	
College of Charleston	Charleston, SC	2,295	228	0	2,523
Eastern Illinois University	Charleston, IL	1,798	497	0	2,295
Ferris State University	Big Rapids, MI	2,582	226	193	3,001
James Madison University	Harrisburg, VA	4,489	752	28	5,269
Marshall University	Huntington, WV	1,591	815	228	2,634
Southern Illinois University - Edwardsville	Edwardsville, IL	2,249	681	144	3,074
Truman State University	Kirksville, MO	1,115	189	0	1,304
University of Massachusetts - Dartmouth	North Dartmouth, MA	1,379	413	93	1,885
University of Minnesota - Duluth	Duluth, MN	1,758	183	1	1,942
University of Northern Iowa	Cedar Falls, IA	2,166	512	14	2,692
Western Washington University	Bellingham, WA	3,335	308	0	3,643

Source: *Integrated Postsecondary Education Data System (IPEDS)*



Building numbers begin at the north end of campus and continue to the south.

Campus information: 319-273-2311

- Handicapped parking
- Handicapped-accessible entries
- Public Safety phones
- Parking meters

Alphabetical Order of Buildings

- | | | |
|--|---|---|
| 40 2601 Campus St. | 52 Gallagher Blueodern Performing Arts Center (GBPAC) | 60 Residence On The Hill Complex (ROTH) |
| 14 Alumni/1012 W. 23rd St. (H-33) | 46 Gilchrist Hall (GIL) | 16 Richard O. Jacobson Human Performance Center (HPC) |
| 6 Athletic Fields | 42 Greenhouse (GNH) | 45 Rider Hall (RID) |
| 12 Bartlett Hall (BAR) | 44 Hagemann Hall (HAG) | 25 Rod Library (LIB) |
| 20 Begeman Hall (PHY) | 22 Honors Cottage/2401 College St. (EMC) | 38 Russell Hall (RSL) |
| 2 Bender Hall (BEN) | 54 Industrial Technology Center (ITC) | 34 Sabin Hall (SAB) |
| 48 Biology Research Complex (BRC) | 19 Innovative Teaching Technology Center (ITT) | 18 Schindler Education Center (SEC) |
| 57 Business & Community Services (BCS) | 59 Jennings Courts (JCT) | 35 Seerley Hall (SRL) |
| 24 Campanile (CPL) | 8 Marshall Center School (MCS) | 51 Shull Hall (SHU) |
| 5 Campbell Hall (CAM) | 21 Lang Hall (LNG) | 37 Strayer-Wood Theatre (SWT) |
| 56a Center for Energy and Environmental Education (CEE) | 47 Latham Hall (LAT) | 9 Student Health Center (SHC) |
| 27 Center for Multicultural Education (CME) | 10 Lawther Hall (LAW) | 63 Tallgrass Prairie Center (NRV) |
| 15 Center for Social and Behavioral Research/2304 College Street | 29 McLeod Center (MCL) | 3 Towers Center (TOW) |
| 1 Child Development Center (CDC) | 26 Maucker Union (MAU) | 14b UNI Bookstore |
| 11 Commons (COM) | 40 Noehren Hall (NRN) | 17 Uni-Dome (DOM) |
| 31 Communication Arts Center (CAC) | 55a Panther Village 1000 | 61 University Apartments Office (UAP) |
| 56b Continuing Education | 55b Panther Village 3000 | 53 Visitor Information Center (VIC) |
| 39 Curris Business Building (CBB) | 64 Power Plant (PPL) | 62 Warehouse 1 (WH1) |
| 4 Dancer Hall (DAN) | 28 President's Home | 7 Wellness/Recreation Center (WRC) |
| 13 East Bartlett (SSC) | 41 Psychology #1 | 23 West Gymnasium (WST) |
| 66 Environmental Health and Safety Building | 50 Redeker Center (RDC) | 33 Wright Hall (WRT) |
| 65 Facilities Management (PHP) | | |



Institutional Research & Effectiveness

University of Northern Iowa

Cedar Falls, Iowa 50614-0005

319-273-3050

The University of Northern Iowa does not discriminate in employment or education. Visit uni.edu/policies/1303 for additional information.

